



VN | VIETNAM

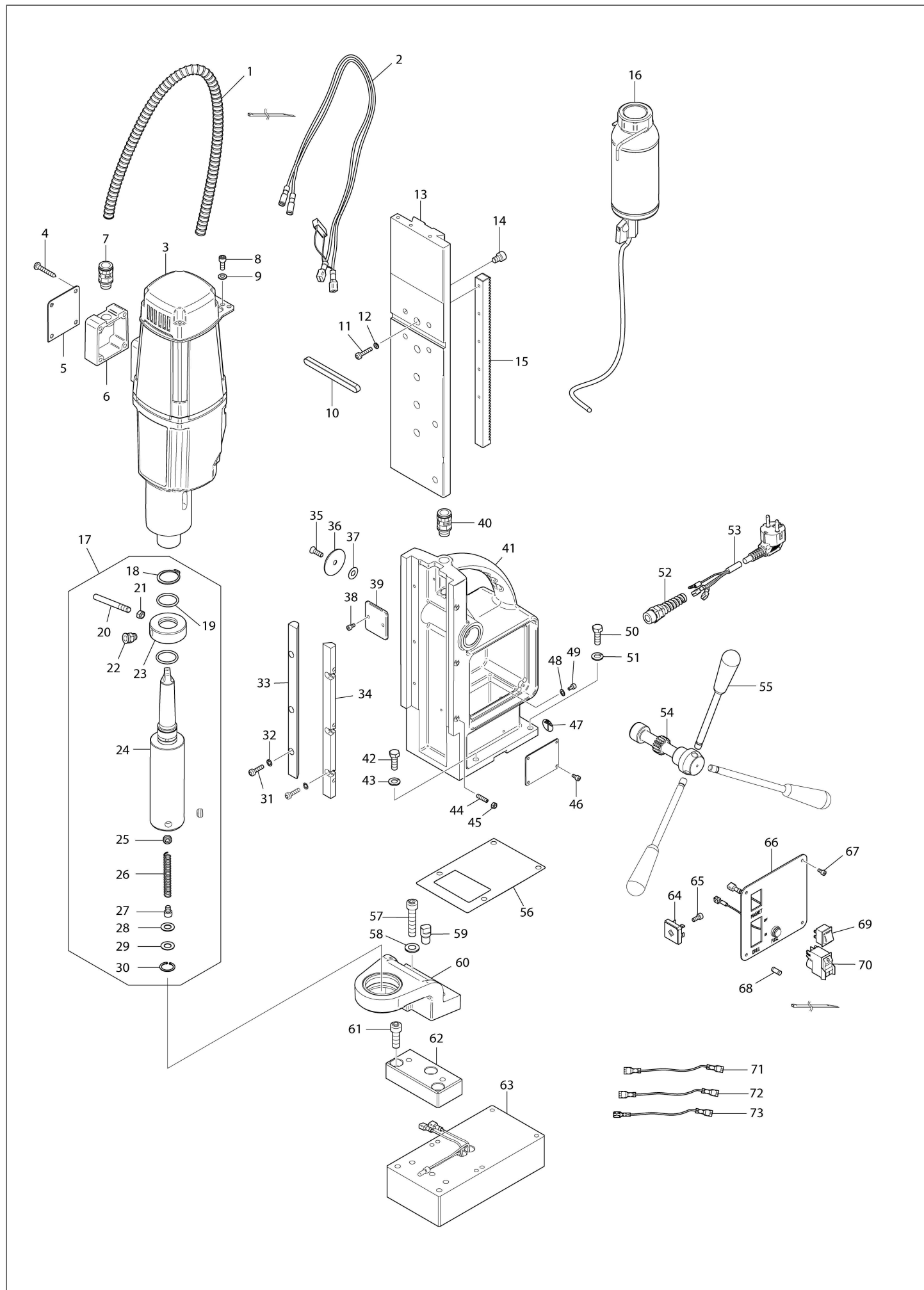
# Sơ đồ / Danh sách bộ phận

**HB850**

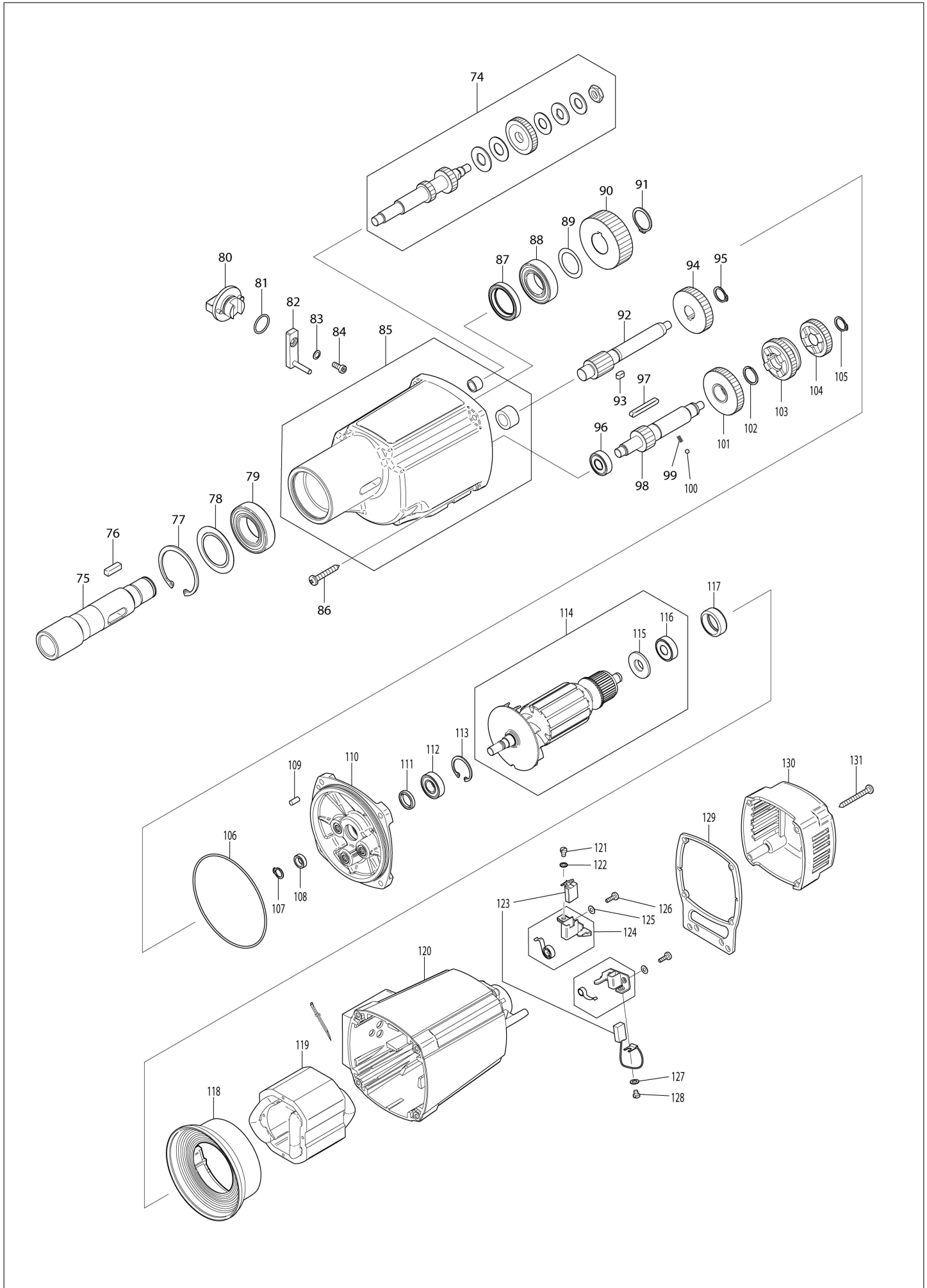
**MAGNETIC DRILL**



# (VN) HB850 / MAGNETIC DRILL



# (VN) HB850 / MAGNETIC DRILL



## HB850 / MAGNETIC DRILL

Mục	Phụ	Số bộ phận	Mô tả bộ phận	SLg	I/C	Số E/C	Số đóng	Ghi chú
001		ES00000194	CORRUGATED TUBE 10X550	1				
002		ES00000221	LEAD WIRE RED & BLACK ASSY	1				
003		ES00000196	DRILL UNIT	1				
	D10		INC. 74-114,117-131					
004		ES00000166	TAPPING SCREW 5.5X38	4				
005		ES00000206	CONNECTOR HOUSING COVER	1				
006		ES00000205	CONNECTOR HOUSING	1				
007		ES00000050	CABLE GLAND PG9	1				
008		ES00000197	HEX SOCKET HEAD BOLT M6X16	2				
009		ES00000124	FLAT WASHER 6	2				
010		ES00000198	KEY 10-8-110	1				
011		ES00000187	HEX SOCKET HEAD BOLT M5X25	5				
012		ES00000061	TOOTHED WASHER 5	5				
013		ES00000185	LIFTING BASE	1				
014		ES00000199	HEX SOCKET HEAD BOLT M8X16	4				
015		ES00000186	RACK	1				
016		ES00000219	COOLANT BOTTLE ASSY	1				
017		ES00000230	MT3 SLEEVE SA-32MM WELDON	1				
	D10		INC. 18-30					
018		ES00000215	RETAINING RING S-28	1				
019		ES00000213	O RING	2				
020		ES00000216	ROTATION STOPPER ROD M8	1				
021		ES00000217	HEX NUT M8	1				
022		ES00000214	1/4" PUSH JOINT	1				
023		ES00000212	COOLANT SUPPLY RING	1				
024		ES00000207	TAPERED SHANK MT3 ADAPTER BODY	1				
025		ES00000121	HEX SOCKET HEAD SET SCREW M10X	2				
026		ES00000208	COMPRESSION SPRING	1				
027		ES00000110	PISTON	1				
028		ES00000209	RUBBER WASHER	1				
029		ES00000210	ALUMINUM WASHER	1				
030		ES00000211	RETAINING RING R-32	1				
031		ES00000183	HEX SOCKET HEAD BOLT M5X20	6				
032		ES00000061	TOOTHED WASHER 5	6				
033		ES00000181	LEFT SIDE TRAPEZOIDAL GUIDE	1				
034		ES00000182	RIGHT SIDE TRAPEZOIDAL GUIDE	1				
035		ES00000052	COUNTERSUNK SCREW M6X16	1				
036		ES00000192	RETAINER PLATE 36	1				
037		ES00000054	THIN FLAT WASHER 9	1				
038		ES00000189	HEX SOCKET HEAD BOLT M4X8	2				
039		ES00000195	PLATE	1				
040		ES00000050	CABLE GLAND PG9	1				
041		ES00000180	MAIN BODY ASSY	1				
042		ES00000184	HEX BOLT M8X25	2				
043		ES00000043	TOOTHED WASHER 8	2				
044		ES00000046	HEX SOCKET SET SCREW M5X20	3				
045		ES00000047	HEX NUT M5	3				
046		ES00000189	HEX SOCKET HEAD BOLT M4X8	4				
047		ES00000072	EARTH MARK LABEL	1				
048		ES00000006	TOOTHED WASHER 4	1				
049		ES00000005	PAN HEAD SCREW M4X8 BRASS	1				
050		ES00000184	HEX BOLT M8X25	2				
051		ES00000043	TOOTHED WASHER 8	2				
052		ES00000058	SPIRAL CABLE GLAND	1				
053		ES00000220	POWER CABLE H05VV-F 3X1.5X3.1E	1				
054		ES00000191	PINION GEAR SHAFT FOR LIFTING	1				
055		ES00000193	HANDLE LEVER	3				
056		ES00000179	GASKET	1				
057		ES00000204	SH SCREW M10X50	2				
058		ES00000203	FLAT WASHER 10	2				
059		ES00000218	STOPPER	1				
060		ES00000202	ANTI-VIBRATION BRACKET ASSY	1				
061		ES00000201	HEX SOCKET HEAD BOLT M10X30	3				
062		ES00000200	SPACER FOR ANTI-VIB BRACKET	1				
063		ES00000178	ELECTROMAGNETIC BASE ASSY	1				

Thay thế  
O : O : Có  
X : X : Không  
< : < : bộ phận mới có thể thay thế bộ phận hiện tại.  
> : > : bộ phận hiện tại có thể thay thế bộ phận mới.  
S : S : Có thể thay thế như một bộ.

## HB850 / MAGNETIC DRILL

Mục	Phụ	Số bộ phận	Mô tả bộ phận	SLg	I/C	Số E/C	Số đóng	Ghi chú
064		ES00000063	BRIDGE RECTIFIER	1				
065		ES00000064	HEX SOCKET HEAD BOLT M5X12	1				
066		ES00000188	PLATE & FUSE HOLDER	1				
067		ES00000189	HEX SOCKET HEAD BOLT M4X8	4				
068		ES00000035	FUSE CERAMIC 2A 250VAC 5X20MM	1				
069		ES00000190	SWITCH FOR MAGNET	1				
070		ES00000037	SWITCH FOR DRILL	1				
071		ES00000069	LEAD WIRE ASSY BLACK	1				
072		ES00000070	LEAD WIRE ASSY RED	1				
073		ES00000071	LEAD WIRE ASSY YELLOW	1				
074		ES00000152	GEAR SHAFT WITH TORQUE LIMITER	1				
075		ES00000176	TAPERED SHANK SPINDLE MT3	1				
076		ES00000177	KEY 6-6-20	1				
077		ES00000175	RETAINING RING R-55	1				
078		ES00000174	DUST SEAL PLATE	1				
079		ES00000173	BALL BEARING 6006RS	1				
080		ES00000167	SHIFT LEVER ASSY	1				
081		ES00000168	O RING	1				
082		ES00000169	SHIFT PIN ASSY	1				
083		ES00000170	RIBBED LOCK WASHER 6.5	1				
084		ES00000171	HEX SOCKET HEAD SCREW M5X12	1				
085		ES00000172	GEAR HOUSING ASSY	1				
086		ES00000166	TAPPING SCREW 5.5X38	4				
087		ES00000150	OIL SEAL 30X42X7	1				
088		ES00000149	BALL BEARING 6005RS	1				
089		ES00000148	THIN WASHER 25	1				
090		ES00000147	SPUR GEAR 38	1				
091		ES00000146	RETAINING RING S-24	1				
092		ES00000164	SPUR GEAR 12 SHAFT	1				
093		ES00000163	KEY 5-5-10	1				
094		ES00000165	SPUR GEAR 38	1				
095		ES00000096	RETAINING RING S-15	1				
096		ES00000153	BALL BEARING 6000RS	1				
097		ES00000157	KEY 5-5-40	1				
098		ES00000154	GEAR SHAFT FOR SHIFTER	1				
099		ES00000156	COMPRESSION SPRING	1				
100		ES00000155	STEEL BALL 4	1				
101		ES00000158	SPUR GEAR 38	1				
102		ES00000159	RETAINING RING WR-18	1				
103		ES00000160	SPUR GEAR 34	1				
104		ES00000161	SPUR GEAR 30	1				
105		ES00000162	RETAINUNG RING S-14	1				
106		ES00000145	O RING	1				
107		ES00000020	RETAINING RING S-10	1				
108		ES00000141	RING	1				
109		ES00000151	LOCATING PIN 5X12	1				
110		ES00000144	GEAR HOUSING COVER ASSY	1				
111		ES00000143	OIL SEAL 15X21X3	1				
112		ES00000142	BALL BEARING 6001RS	1				
113		ES00000017	RETAINING RING R-28	1				
114		ES00000130	ARMATURE ASSY 220-240V	1				
	D10		INC. 115,116					
115		ES00000131	INSULATION WASHER	1				
116		ES00000132	BALL BEARING 6000ZZ	1				
117		ES00000133	BEARING CAP	1				
118		ES00000135	BAFFLE PLATE	1				
119		ES00000134	STATOR ASSY 220-240V	1				
120		ES00000136	MOTOR HOUSING	1				
121		ES00000005	PAN HEAD SCREW M4X8 BRASS	1				
122		ES00000006	TOOTHED WASHER 4	1				
123		ES00000140	AUTO CUT-OFF CARBON BRUSH PAIR	1				
124		ES00000139	BRUSH HOLDER ASSY	2				
125		ES00000004	WAVE WASHER 4	4				
126		ES00000003	PAN HEAD SCREW M4X12	4				
127		ES00000006	TOOTHED WASHER 4	1				

Thay thế  
O : O : Có  
X : X : Không  
< : < : bộ phận mới có thể thay thế bộ phận hiện tại.  
> : > : bộ phận hiện tại có thể thay thế bộ phận mới.  
S : S : Có thể thay thế như một bộ.

