



VN	VIETNAM
----	---------

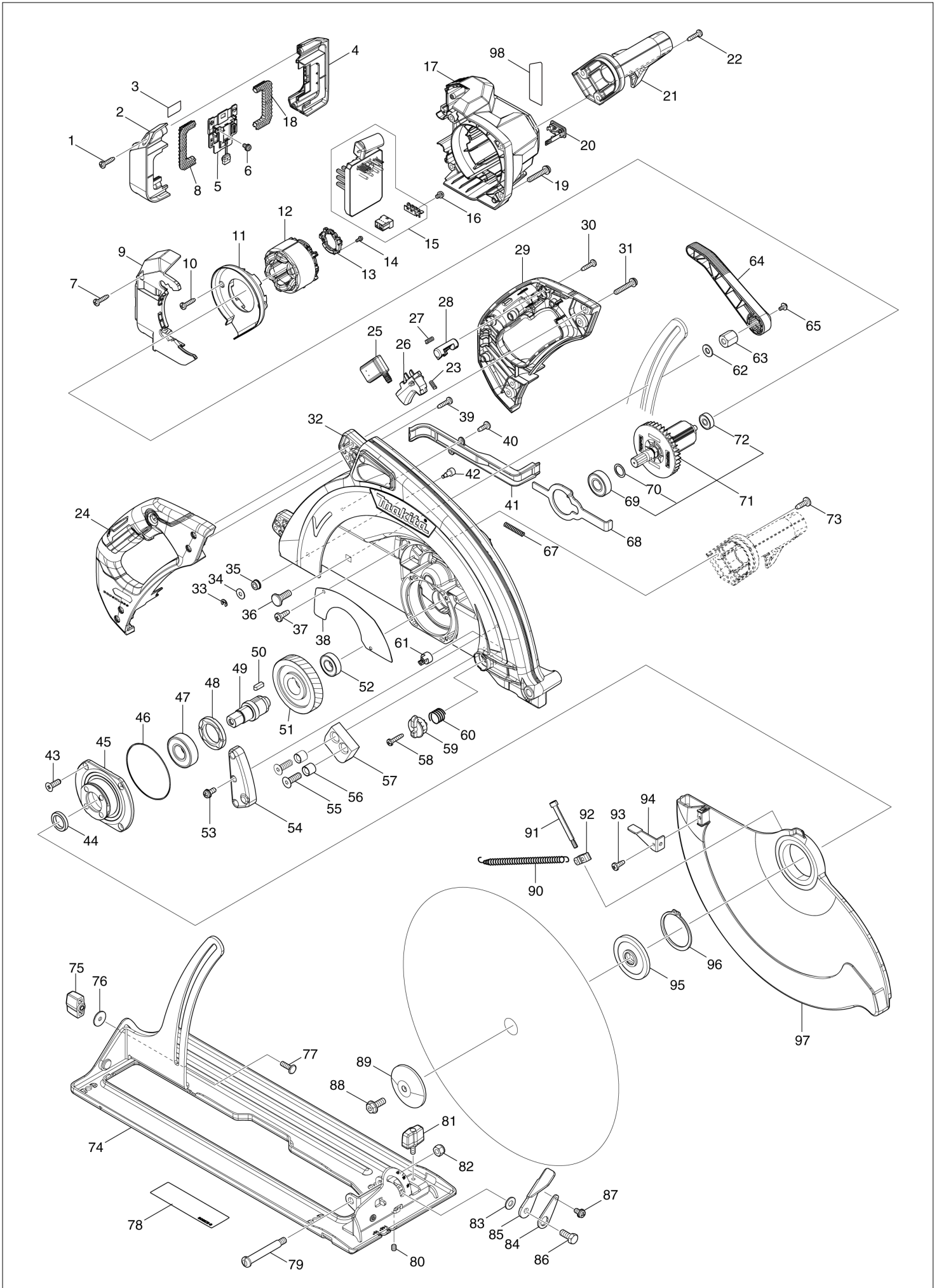
Diagram / Parts List

HS013G

415MM CORDLESS CIRCULAR SAW



(VN) HS013G / 415MM CORDLESS CIRCULAR SAW



VN	VIETNAM
-----------	----------------

HS013G / 415MM CORDLESS CIRCULAR SAW

Item	Sub	Parts No.	Parts Description	Qty	I/C	E/C No.	Close No.	Remark
001		266326-2	TAPPING SCREW 4X18	2				
002		1830Y4-3	BATTERY HOUSING SET	1				
	C10	263005-3	RUBBER PIN 6	2				
	D10		INC. 4					
003		8147S0-7	HS013G SERIAL NO. LABEL	1				
004		1830Y4-3	BATTERY HOUSING SET	1				
	C10	263005-3	RUBBER PIN 6	2				
	D10		INC. 2					
005		632T08-2	TERMINAL UNIT	1				
006		652031-1	PAN HEAD SCREW M3X6	2				
007		266326-2	TAPPING SCREW 4X18	2				
008		422543-6	CUSHION RUBBER	1				
009		4131E9-8	MOTOR HOUSING COVER	1				
010		266326-2	TAPPING SCREW 4X18	2				
011		4131F2-9	BAFFLE PLATE	1				
012		629C86-9	STATOR	1				
013		632R96-7	SENSOR UNIT	1				
014		652119-7	PAN HEAD SCREW M2X6	3				
015		620R04-0	CONTROLLER	1				
016		652069-6	FLAT HEAD SCREW M3X6	3				
017		4131E8-0	MOTOR HOUSING	1				
018		422543-6	CUSHION RUBBER	1				
019		911253-5	PAN HEAD SCREW M5X30	4				
020		140F99-0	CAP COMPLETE	1				
	C10	213A05-9	O-RING16	1				
021		4131F0-3	FRONT HANDLE	1				
022		266045-0	TAPPING SCREW 4X20	2				
023		231433-0	COMPRESSION SPRING 4	1				
024		1830Y5-1	HANDLE SET	1				
	C10	931202-6	HEX. NUT M5	4				
	D10		INC. 29					
025		651083-9	SWITCH C3XA-1PSPM	1				
026		459829-5	SWITCH LEVER	1				
027		231433-0	COMPRESSION SPRING 4	1				
028		419704-7	LOCK OFF BUTTON	1				
029		1830Y5-1	HANDLE SET	1				
	C10	931202-6	HEX. NUT M5	4				
	D10		INC. 24					
030		266326-2	TAPPING SCREW 4X18	4				
031		911253-5	PAN HEAD SCREW M5X30	4				
032		137229-6	BLADE CASE ASS'Y	1				
	C10	263005-3	RUBBER PIN 6	1				
033		961017-7	STOP RING E-3	1				
034		267099-0	FLAT WASHER 4	1				
035		262104-8	SHOULDER RING 4	1				
036		266249-4	CAP SQUARE NECK BOLT M8X24	1				
037		266026-4	TAPPING SCREW BIND CT 4X12	2				
038		344891-2	COVER PLATE	1				
039		266326-2	TAPPING SCREW 4X18	2				
040		266026-4	TAPPING SCREW BIND CT 4X12	2				
041		417276-6	LEAD COVER	1				
042		266289-2	HEX. SOCKET HEAD BOLT M6	1				
043		265034-2	+ COUNTERSUNK HEAD SCREW M5X1	4				
044		257230-6	RING 20	1				
045		317378-7	BEARING BOX	1				
046		213763-1	O RING 75	1				
047		211329-1	BALL BEARING 6204DDW	1				
048		285824-7	BEARING RETAINER 31-48	1				
049		323938-5	SPINDLE	1				
050		254229-2	KEY 5	1				
051		227B85-5	HELICAL GEAR 61	1				
052		211247-3	BALL BEARING 6002DDW	1				
053		911113-1	PAN HEAD SCREW M4X10 WITH WR	1				
054		417282-1	STOPPER PLATE	1				
055		251973-2	HEX.SOCKET C.S.HEAD BOLT M8X25	2			Y09555	

A:HS013GZ(N)

Interchange

O : Yes

X : No

< : the new part can be substituted for the current.

> : the current part can be substituted for the new.

S : Interchangeable as a set.

