



Cordless Hedge Trimmer

UH020G 500mm (19-3/4")

UH021G 600mm (23-5/8")



40V LI-ION max



Lightweight and compact enough to handle easily,
yet capable of high power trimming



Run time*
UH020G /UH021G

110 / 105 min

Battery: BL4040

Strokes per minute

4,200 min⁻¹

Net weight
UH020G /UH021G

3.0 / 3.1 kg

Battery: BL4020



*Continuous run time (approx) on a single full battery charge (under no-load)

High efficiency, High durability, High power

Smooth and efficient trimming

- The output power and number of strokes have been increased compared with our 18V models, achieving smooth and efficient trimming.
- Constant speed control suppresses rotation drop to enable stable trimming.

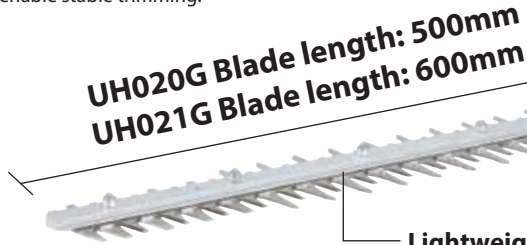


Blade type

Single-sided blade with obliquely-angled and triple-ground teeth



With excellent branch introduction and a design that prevents branches from escaping, the blades smoothly capture branches, allowing for trimming without letting branches escape.



Lightweight design

The guide bar is made of aluminum to make the front of the tool lighter for reducing user fatigue.

Photo: UH020G

Highly durable crank mechanism

Increased crank wall thickness can:

- reduce the chance of falling off of the blade from the crank.
- increase the contact area the blade, reducing wear of the crank.



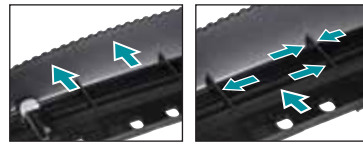
Chip receiver (option)

smoothly takes in branches and leaves

- Smooth shape for excellent collection

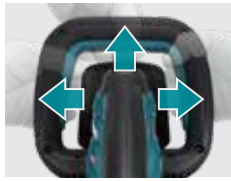


- Leaves and branches are less likely to fall and slip



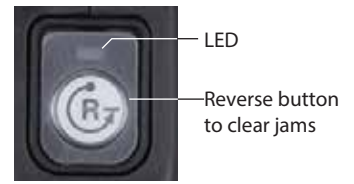
Redesigned, easy-to-press switch lever

can be pressed without gripping the front handle deep in your palm, allowing for easy control.



Reverse function to clear jams

When the shear blades are jammed with branches, the shear blades are reversed for a moment to clear the jam by pressing the Reverse button and then pulling the trigger.



Accessories

- Standard Equipment for UH020G
- Standard Equipment for UH021G

Model No.	Shear blade set	Blade cover	Chip receiver	Grease vessel set
UH020G (500mm)	1914G4-7 ●	413L91-8 ●	1910T1-0	199450-5
UH021G (600mm)	1914G5-5 ●	413L92-6 ●	1910T2-8	

XPT / IPX4 -compatible

High water-resistance allows the user to operate the tool even if it is wet with water.

Charging Time

	Fast Charging	Standard Charging
	DC40RA	DC40RC
*1 BL4020 2.0Ah	22 min	30 min
*1 BL4025 2.5Ah	28 min	38 min
*1 BL4040/F 4.0Ah	45 min	67 min
BL4050F 5.0Ah	50 min	85 min
BL4080F 8.0Ah	76 min	170 min

*1 Recommended battery

The weight may differ depending on the attachment(s), including the battery cartridge. Items of standard equipment and specifications may vary by country or area.

Cordless Hedge Trimmer

UH020GZ 500mm UH021GZ 600mm

	UH020G	UH021G
Brake	500 mm (19-3/4")	600 mm (23-5/8")
Constant Speed	30.0 mm (1-3/16")	30.0 mm (1-3/16")
Grass Tangle Removing Function	20.0 mm (13/16")	20.0 mm (13/16")
Anti-restart function	2.0 mm (3/32")	2.0 mm (3/32")
Strokes Per Minute	4,200 min ⁻¹	4,200 min ⁻¹
Continuous use	w/BL4040: 110 min	w/BL4040: 105 min
Sound pressure level*	83 dB(A)	83 dB(A)
Noise K factor*	3 dB(A)	3 dB(A)
Measured sound power level*	91.0 dB(A)	91.0 dB(A)
Guaranteed sound power level*	93 dB(A)	93 dB(A)
Vibration level *	2.5 m/s ² or less	2.5 m/s ² or less
Vibration K factor *	1.5 m/s ²	1.5 m/s ²
Dimensions (L x W x H)	w/BL4040: 929 x 207 x 185 mm (36-1/2 x 8-1/8 x 7-1/4")	w/BL4040: 1,048 x 207 x 185 mm (41-1/4 x 8-1/8 x 7-1/4")
Net weight**	3.0 - 4.2 kg (6.6 - 9.3 lbs.)	3.1 - 4.3 kg (6.8 - 9.5 lbs.)
Net weight (Battery)	BL4020 - BL4080F	BL4020 - BL4080F
Standard Equipment :	UH020GZ: Battery & charger not include Shear blade 500mm (1914G4-7), blade cover (413L91-8)	UH021GZ: Battery & charger not include Shear blade 600mm (1914G5-5), blade cover (413L92-6)

*EN62841-4-2
**w/o Chip receiver and Blade cover

CÔNG TY TNHH MAKITA VIỆT NAM

Kho 4-56, Block 16, 18/12 Đường số 3, KCN VSP II, P. Hiệp Phú, TP. Thủ Đức, TP. Hồ Chí Minh
ĐT: 0274 982 8339 - Fax: 0274 362 8339 - Website: www.makita.com.vn

CHI NHÁNH CTY TNHH MAKITA VN TẠI MIỀN BẮC
Khu 5, Số 1, Đường Số 6, KCN - DT - DV VSP Bắc Ninh, P. Phú Châu,
TP. Từ Sơn, T. Bắc Ninh,
ĐT: 0222 378 5942 Fax: 0222 378 5941

TRUNG TÂM DỊCH VỤ KHÁCH HÀNG
CHI NHÁNH HÀ NỘI
65 Trường Chinh, P. Phương Liệt, Q. Thanh Xuân, TP. Hà Nội,
ĐT: 0243 202 2585

TRUNG TÂM DỊCH VỤ KHÁCH HÀNG
CHI NHÁNH ĐÀ NẴNG
Số 40, Đường Chi Lăng, P. Hải Châu II, Q. Hải Châu, TP. Đà Nẵng
ĐT: 0236 352 5079 / 0236 352 5179 Fax: 0236 352 5479

TRUNG TÂM DỊCH VỤ KHÁCH HÀNG
CHI NHÁNH CẦN THƠ
368 Võ Văn Kiệt, Khu Vực 5, P. An Thới, Q. Bình Thủy,
TP. Cần Thơ
ĐT: 0292 389 4358 Fax: 0292 389 4359

TRUNG TÂM DỊCH VỤ KHÁCH HÀNG
CHI NHÁNH BUỒN MA THUỘT
Số 14 Đường P. Thăng Long, TP. Buôn Ma Thuột, T. Đắk Lắk,
ĐT: 0262 355 4556 Fax: 0262 355 4557

TRUNG TÂM DỊCH VỤ KHÁCH HÀNG
CHI NHÁNH HẢI PHÒNG
Số 01 Lê Đại Hành, Dư án Hoàng Huy Riverside, P. Thượng Lý,
Q. Hồng Bàng, TP. Hải Phòng
ĐT: 0225 883 1529

TRUNG TÂM DỊCH VỤ KHÁCH HÀNG
CHI NHÁNH NHÀ TRẢNG
Lô 36-38 đường B6, Khu đô thị Vĩnh Diễm Trung, Xã Vĩnh Ngọc,
TP. Nhà Trảng, T. Khánh Hòa
ĐT: 0258 220 0039

TRUNG TÂM DỊCH VỤ KHÁCH HÀNG
CHI NHÁNH HỒ CHÍ MINH
Số 12 Trịnh Văn Căn, P. Cầu Ông Lãnh, Q. TP. Hồ Chí Minh,
ĐT: 0284 821 5181