



|    |         |
|----|---------|
| VN | VIETNAM |
|----|---------|

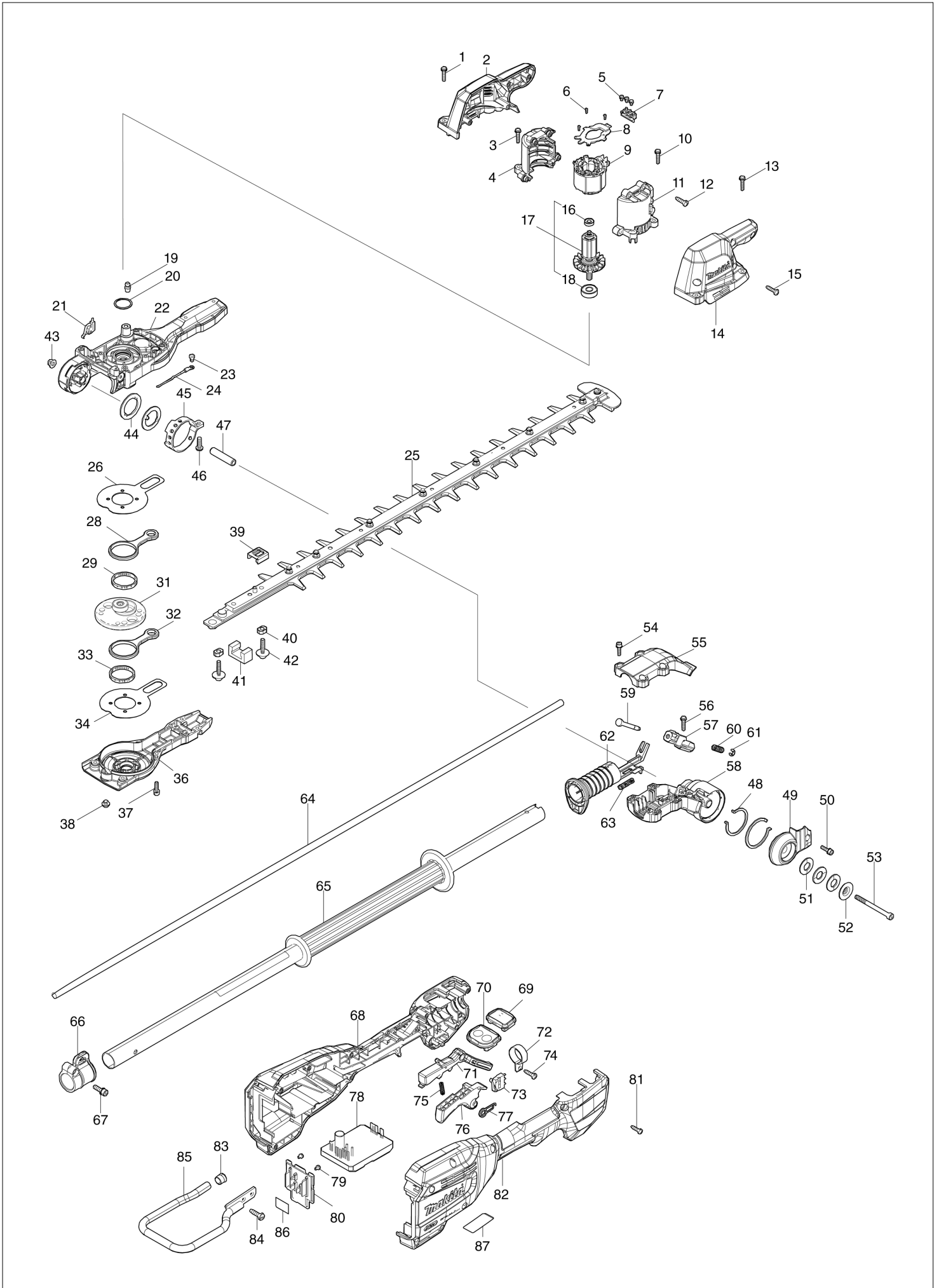
# Diagram / Parts List

**UN001G**

**600MM CRDLSS POLE HDG TRIMMER**



# (VN) UN001G / 600MM CRDLSS POLE HDG TRIMMER



|           |                |
|-----------|----------------|
| <b>VN</b> | <b>VIETNAM</b> |
|-----------|----------------|

### UN001G / 600MM CRDLSS POLE HDG TRIMMER

| Item | Sub | Parts No. | Parts Description            | Qty | I/C | E/C No. | Close No. | Remark |
|------|-----|-----------|------------------------------|-----|-----|---------|-----------|--------|
| 001  |     | 911138-5  | P.H.SCREW M4X20 WITH WR      | 2   |     |         |           |        |
| 002  |     | 1830N2-0  | HOUSING SET                  | 1   |     |         |           |        |
|      | D10 |           | INC. 14                      |     |     |         |           |        |
| 003  |     | 911138-5  | P.H.SCREW M4X20 WITH WR      | 2   |     |         |           |        |
| 004  |     | 1830N0-4  | MOTOR HOUSING SET            | 1   |     |         |           |        |
|      | D10 |           | INC. 11                      |     |     |         |           |        |
| 005  |     | 652069-6  | FLAT HEAD SCREW M3X6         | 3   |     |         |           |        |
| 006  |     | 266490-9  | TAPPING SCREW PT 2X6         | 3   |     |         |           |        |
| 007  |     | 638A88-2  | LEAD UNIT                    | 1   |     |         |           |        |
| 008  |     | 620N82-6  | CONTROLLER B                 | 1   |     |         |           |        |
| 009  |     | 629A75-2  | STATOR                       | 1   |     |         |           |        |
| 010  |     | 911138-5  | P.H.SCREW M4X20 WITH WR      | 2   |     |         |           |        |
| 011  |     | 1830N0-4  | MOTOR HOUSING SET            | 1   |     |         |           |        |
|      | D10 |           | INC. 4                       |     |     |         |           |        |
| 012  |     | 266326-2  | TAPPING SCREW 4X18           | 4   |     |         |           |        |
| 013  |     | 911138-5  | P.H.SCREW M4X20 WITH WR      | 2   |     |         |           |        |
| 014  |     | 1830N2-0  | HOUSING SET                  | 1   |     |         |           |        |
|      | D10 |           | INC. 2                       |     |     |         |           |        |
| 015  |     | 266326-2  | TAPPING SCREW 4X18           | 4   |     |         |           |        |
| 016  |     | 210215-3  | BALL BEARING 695ZZ           | 1   |     |         |           |        |
| 017  |     | 510598-4  | ROTOR ASSEMBLY               | 1   |     |         |           |        |
|      | D10 |           | INC. 16,18                   |     |     |         |           |        |
| 018  |     | 210005-4  | BALL BEARING 608DDW          | 1   |     |         |           |        |
| 019  |     | 243107-1  | GREASE NIPPLE                | 1   |     |         |           |        |
| 020  |     | 213961-7  | O RING 22                    | 1   |     |         |           |        |
| 021  |     | 632V50-5  | SWITCH UNIT                  | 1   |     |         |           |        |
| 022  |     | 137154-1  | GEAR HOUSING ASS'Y           | 1   |     |         |           |        |
|      | C10 | 263002-9  | RUBBER PIN 4                 | 1   |     |         |           |        |
|      | C20 | 263005-3  | RUBBER PIN 6                 | 4   |     |         |           |        |
| 025  |     | 1914E7-7  | SHEAR BLADE 600R SET         | 1   |     |         |           |        |
|      | C10 | 188605-7  | OIL VESSEL SET               | 1   |     |         |           |        |
|      | C20 | 257859-8  | SLEEVE 5                     | 2   |     |         |           |        |
|      | C30 | 347A61-8  | BRUNCH CATCHER               | 1   |     |         |           |        |
|      | C40 | 265C90-0  | PAN HEAD SCREW M5X10 WITH WR | 1   |     |         |           |        |
| 026  |     | 347361-0  | FRICTION PLATE               | 1   |     |         |           |        |
| 028  |     | 347662-6  | CONNECTING ROD               | 1   |     |         |           |        |
| 029  |     | 212229-8  | NEEDLE CAGE 315              | 1   |     |         |           |        |
| 031  |     | 137187-6  | HELICAL GEAR ASS'Y           | 1   |     |         |           |        |
|      | C10 | 210029-0  | BALL BEARING 608ZZ           | 1   |     |         |           |        |
|      | C20 | 211499-6  | BALL BEARING 626ZZ           | 1   |     |         |           |        |
| 032  |     | 347662-6  | CONNECTING ROD               | 1   |     |         |           |        |
| 033  |     | 212229-8  | NEEDLE CAGE 315              | 1   |     |         |           |        |
| 034  |     | 347361-0  | FRICTION PLATE               | 1   |     |         |           |        |
| 036  |     | 137155-9  | GEAR HOUSING COVER ASS'Y     | 1   |     |         |           |        |
|      | C10 | 263002-9  | RUBBER PIN 4                 | 1   |     |         |           |        |
| 037  |     | 922128-3  | HEX. SOCKET HEAD BOLT M4X16  | 6   |     |         |           |        |
| 038  |     | 266559-9  | H.S.BUTTON HEAD BOLT M6X4    | 1   |     |         |           |        |
| 039  |     | 422B58-5  | DUST SEAL                    | 1   |     |         |           |        |
| 040  |     | 257859-8  | SLEEVE 5                     | 2   |     |         |           |        |
| 041  |     | 443159-4  | SEAL                         | 1   |     |         |           |        |
| 042  |     | 265A89-3  | H.S.H.BOLT M5X25 WITH WR     | 2   |     |         |           |        |
| 043  |     | 252286-4  | COLLARED HEX.LOCK NUT M5-8   | 1   |     |         |           |        |
| 044  |     | 347C46-6  | LOCK WASHER 27               | 2   |     |         |           |        |
| 045  |     | 347C47-4  | ANGULAR HOLDER               | 1   |     |         |           |        |
| 046  |     | 265487-5  | H.S. BUTTON HEAD BOLT M5X16  | 1   |     |         |           |        |
| 047  |     | 257761-5  | SLEEVE 6                     | 1   |     |         |           |        |
| 048  |     | 347C45-8  | LOCK WASHER 39               | 2   |     |         |           |        |
| 049  |     | 312F28-5  | SIDE COVER                   | 1   |     |         |           |        |
| 050  |     | 922128-3  | HEX. SOCKET HEAD BOLT M4X16  | 1   |     |         |           |        |
| 051  |     | 232868-8  | CONED DISK SPRING 12         | 3   |     |         |           |        |
| 052  |     | 253603-1  | DISK WASHER 5                | 1   |     |         |           |        |
| 053  |     | 922912-6  | HEX. SOCKET HEAD BOLT M5X65  | 1   |     |         |           |        |
| 054  |     | 922128-3  | HEX. SOCKET HEAD BOLT M4X16  | 5   |     |         |           |        |
| 055  |     | 312F27-7  | PIPE HOLDER COVER 24         | 1   |     |         |           |        |
| 056  |     | 911138-5  | P.H.SCREW M4X20 WITH WR      | 1   |     |         |           |        |

A:UN001GZ(N)

Interchange  
O : Yes  
X : No  
< : the new part can be substituted for the current.  
> : the current part can be substituted for the new.  
S : Interchangeable as a set.

