

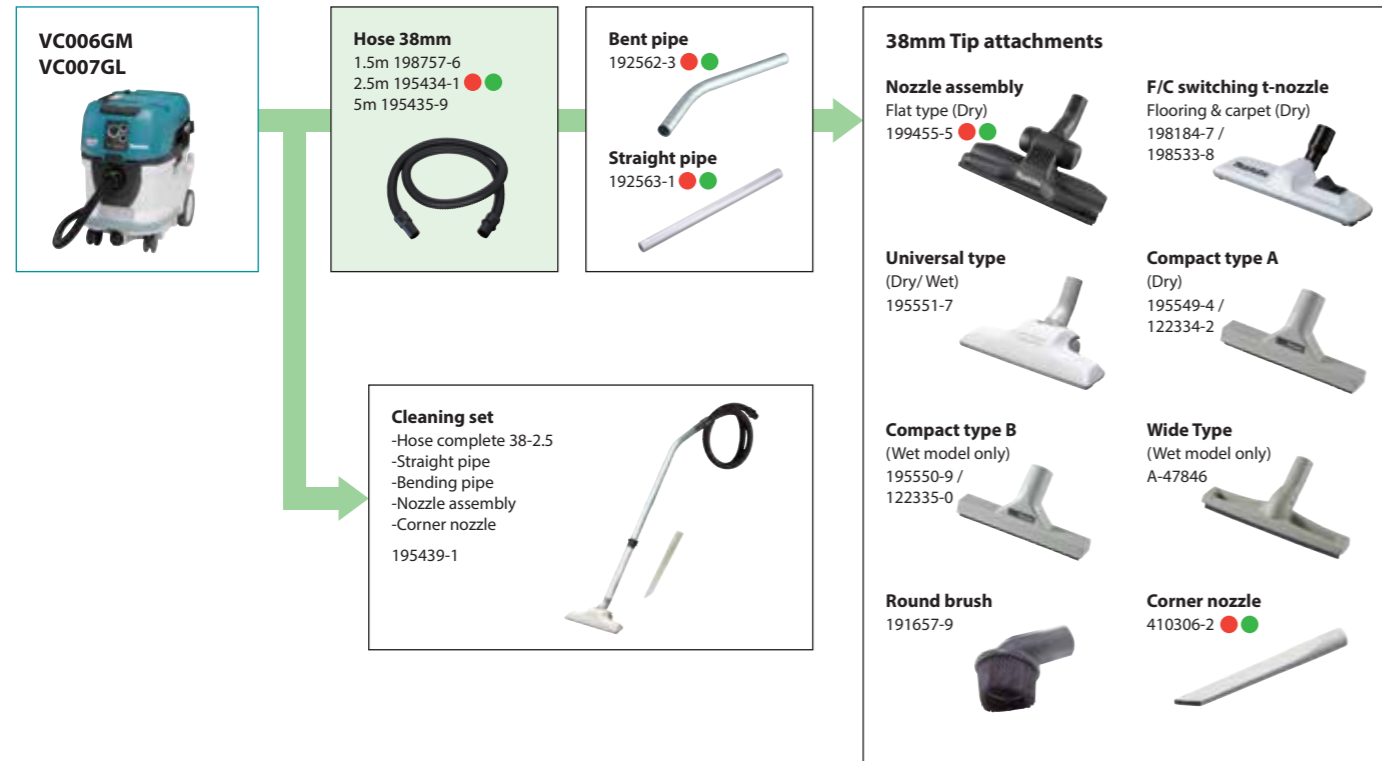


# Cordless Vacuum Cleaner VC006GM / VC007GL



■ Accessories ● Standard equipment VC006GM ● Standard equipment VC007GL

## System charts



### Powder filter M set

Part No. 1911B6-0 ●



### Powder filter H set

Part No. 1911B7-8 ●

HEPA filter with high efficiency in capturing dust and capability of capturing fine airborne dust.



### Damper set

Part No. 1911B4-4 ●

During automatic self-cleaning, this part pushes Pre-filter back to remove the dust adhering to the filter.



### Pre filter set

Part No. 1911B5-2 ●

A component part of filter, which is made of material that allows for easy dust removal.



### Filter for water set

Part No. 1910N0-0

This is a special filter designed for water suction applications. It uses a material that allows water to easily pass when a large amount of water is suctioned repeatedly.



### Filter bag set (5 pcs)

Part No. 1910Y4-9 ●

35 L  
With shutter of non-woven fabric



### Poly bag set (10 pcs)

Part No. 1910R3-2 ●



## Charging Time

Battery	Fast Charging			
	DC40RA	DC40RB	DC40RC	DC40WA
*1 BL4020 2.0Ah	22 min	30 min	110 min	
*1 BL4025 2.5Ah	28 min	38 min	130 min	
*1 BL4040 4.0Ah	45 min	67 min	210 min	
*1 BL4050F 5.0Ah	50 min	85 min	260 min	
*1 BL4080F 8.0Ah	76 min	170 min	420 min	

\*1 Recommended battery

## Cordless Vacuum Cleaner VC006GMZ / VC007GLZ

Variable Speed	Capacity	Dust / Water: 40 / 30 L
Revolving Hose	Max air flow	w/ Hose 28-3.5: 2.0 m <sup>3</sup> /min w/ Hose 38-2.5: 3.7 m <sup>3</sup> /min
Static Free Hose	Max sealed suction	18 kPa
	Vibration level	2.5 m/s <sup>2</sup> or less
	Sound pressure level	70 dB(A) or less
	Dimensions (L x W x H)	586 x 385 x 598 mm (23 x 15-1/8 x 23-1/2")
	Net weight	VC006GM: 18.4 - 20.8 kg (40.6 - 45.9 lbs.) VC007GL: 18.3 - 20.7 kg (40.3 - 45.6 lbs.)

### Standard Equipment :

VC006GMZ: Powder filter M (1911B6-0), damper (1911B4-4), pre filter (1911B5-2), nozzle assembly (199455-5), hose complete 28-3.5 (195433-3), hose complete 38-2.5 (195434-1), filter bag (1910Y4-9), straight pipe (192563-1), bending pipe (192562-3), corner nozzle (410306-2), front cuff 22 (195547-8), front cuff 24 (195546-0), cap (422A02-6), stopper (451350-0), PH screw M4x20 (911138-5).

VC007GLZ: Powder filter H (1911B7-8), damper (1911B4-4), pre filter (1911B5-2), nozzle assembly (199455-5), hose complete 28-3.5 (195433-3), hose complete 38-2.5 (195434-1), poly bag (1910R3-2), straight pipe (192563-1), bending pipe (192562-3), corner nozzle (410306-2), front cuff 22 (195547-8), front cuff 24 (195546-0), stopper (451350-0), PH screw M4x20 (911138-5).

The weight does not include accessories but battery cartridge(s). The lightest and heaviest combinations weight of the appliance and battery cartridge(s) are shown in the table. Items of standard equipment and specifications may vary by country or area.

M4-052023-1



photo: VC006GM, GA038G

## Dust class M approved

VC006GM

Tank capacity  
Dry / Wet  
40 / 30 L



## Dust class L approved

VC007GL

Tank capacity  
Dry / Wet  
40 / 30 L



### Continuous use

Battery: BL4050F x2

[at dial Min] | [at dial Max]  
**80 min.** | **25 min.**

### Max air flow

Hose size: ø38mm x 2.5m | Hose size: ø28mm x 3.5m  
**3.7 m<sup>3</sup>/min.** | **2.0 m<sup>3</sup>/min.**



## CÔNG TY TNHH MAKITA VIỆT NAM

Kho 5, Số 1, Đường Số 6, KCN - BT - DV VSP Bắc Ninh, P. Phú Châu, TP. Từ Sơn, T. Bắc Ninh, BT: 0222 376 5942 Fax: 0222 376 5941

TRUNG TÂM DỊCH VỤ KHÁCH HÀNG  
CHI NHÁNH HÀ NỘI  
85 Trường Chinh, P. Phương Liệt, Q. Thanh Xuân, TP. Hà Nội, BT: 0243 202 2585

TRUNG TÂM DỊCH VỤ KHÁCH HÀNG  
CHI NHÁNH ĐÀ NẴNG  
102 Triệu Nữ Vương, P. Hải Châu 2, Q. Hải Châu, TP. Đà Nẵng, BT: 0236 352 5079 / 0236 352 5179 Fax: 0236 352 5478

TRUNG TÂM DỊCH VỤ KHÁCH HÀNG  
CHI NHÁNH CẦN THƠ  
366 Võ Văn Kiệt, Khu Vực 5, P. An Thới, Q. Bình Thủy, TP. Cần Thơ, BT: 0292 389 4358 Fax: 0292 389 4358

TRUNG TÂM DỊCH VỤ KHÁCH HÀNG  
CHI NHÁNH HẢI PHÒNG  
Số 01 Lê Duẩn, Dã An Hoàng Huy Riverside, P. Thượng Lý, Q. Hồng Bàng, TP. Hải Phòng, BT: 0225 863 1529

TRUNG TÂM DỊCH VỤ KHÁCH HÀNG  
CHI NHÁNH HUẾ  
Số 12 Trần Văn Cẩn, P. Cầu Ông Lãnh, Q. 1, TP. Hồ Chí Minh, BT: 0283 821 5191





**For Dust Collecting**

photo: VC007GL



**For Cleaning**

photo: VC006GM

**High air flow similar to that of corded model**

40Vmax XGTx2 (80Vmax) enables high air flow similar to that of corded models, and is particularly effective in applications where a large amount of airborne dust is generated.

**Max air flow**

Hose size: ø38mm x 2.5m | Hose size: ø28mm x 3.5m

**3.7 m<sup>3</sup>/min.** | **2.0 m<sup>3</sup>/min.**



photo: VC006GM

**Continuous use**  
Battery: BL4050F x2

[at dial Min] | [at dial Max]

**80 min.** | **25 min.**



**Automatic self-cleaning filter system**

Automatically removes dust adhering to filter even in continuous use, reducing clogging of the filter to suppress decrease in suction power.



**AWS** Auto-start Wireless System - supported



Wireless unit not integrated with the cleaner's body

**MAKPAC can be attached**

- MAKPAC storage case can be attached directly without MAKPAC adapter.
- Max height: 315mm, Max weight: 20kg



**Dust class M approved VC006GM only**

- Dust permeability: less than 0.1% (according to EN60335-2-69)
- Built-in buzzer beeps to warn the user of low air flow, when the air flow decreases, in such a case as when filter is clogged or the tank is getting closer to a full tank.

**With water drain**

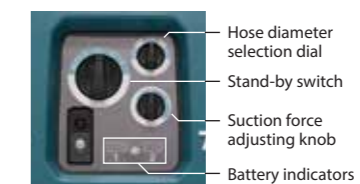


**Large rear wheels**



**VC006GM**

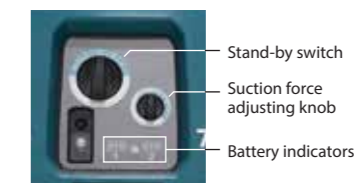
Dust type: Dry: 40L / Wet: 30L  
Approval for dust class: M



**BL** **AWS** **GYUPPA!** **XPT**

**VC007GL**

Dust type: Dry: 40L / Wet: 30L  
Approval for dust class: L



**HEPA filter** **BL** **AWS** **GYUPPA!** **XPT**