



VN	VIETNAM
----	---------

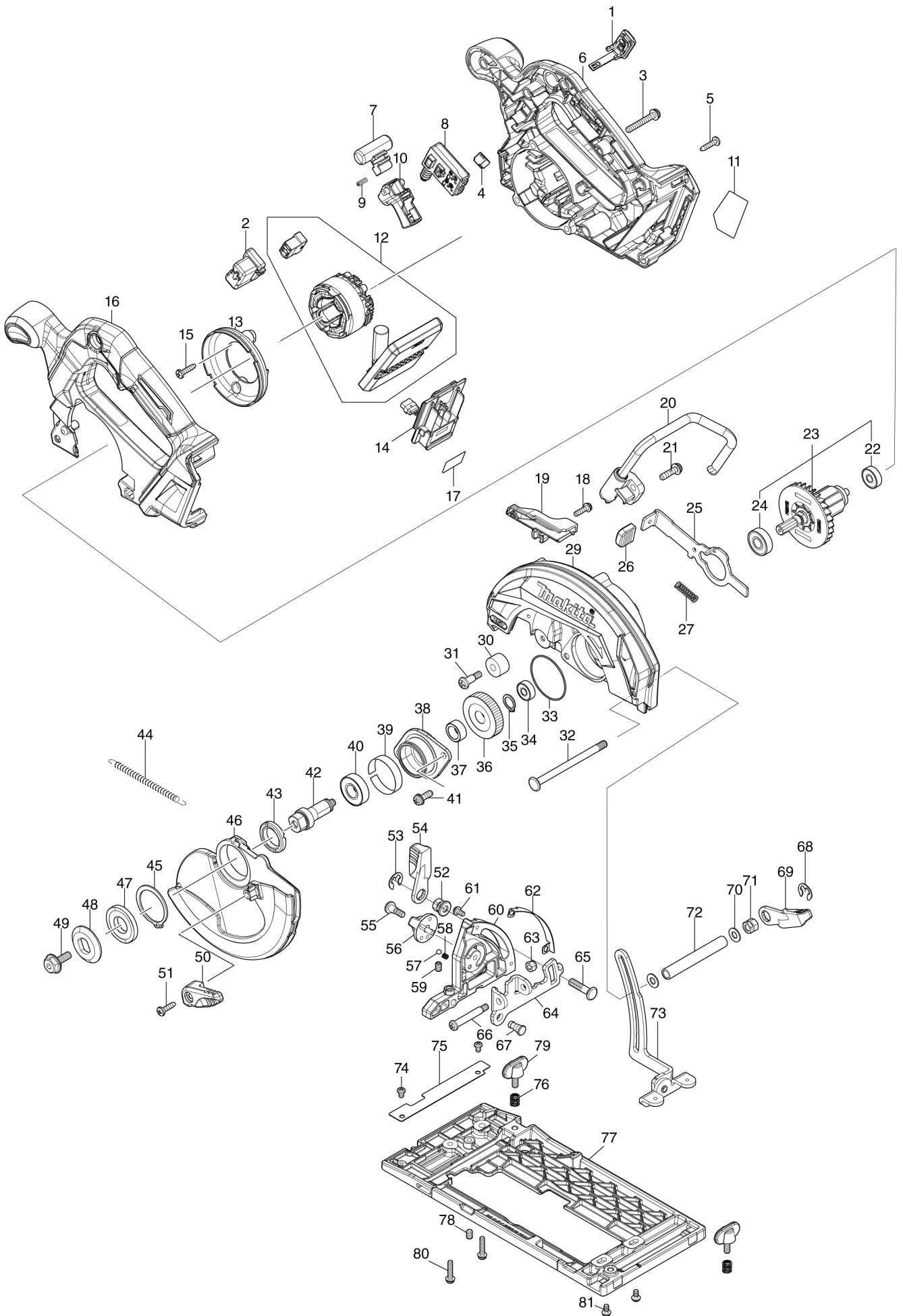
# Diagram / Parts List

**HS012G**

**165MM CORDLESS CIRCULAR SAW**



(VN) HS012G / 165MM CORDLESS CIRCULAR SAW



<b>VN</b>	<b>VIETNAM</b>
-----------	----------------

## HS012G / 165MM CORDLESS CIRCULAR SAW

Item	Sub	Parts No.	Parts Description	Qty	I/C	E/C No.	Close No.	Remark
001		140G30-2	CAP COMPLETE	1				
	C10	213A05-9	O-RING16	1				
002		459256-6	HOLDER	1				
003		911258-5	PAN HEAD SCREW M5X35	3				
004		620936-3	LED CIRCUIT	1				
005		265995-6	TAPPING SCREW 4X18	8				
006		136839-6	MOTOR HOUSING ASSEMBLY	1				
	C10	263005-3	RUBBER PIN 6	1				
007		419704-7	LOCK OFF BUTTON	1				
008		650008-0	SWITCH C3XB-1LPSPM	1			DH623	
008-1		650039-9	SWITCH C3XB-1LPSPM	1	O	DH623		
009		231433-0	COMPRESSION SPRING 4	1				
010		413N46-5	SWITCH LEVER	1				
011		8586D6-4	HS012G NAME PLATE	1				
012		629B81-3	STATOR COMPLETE	1				
013		413N45-7	BAFFLE PLATE	1				
014		632P65-6	TERMINAL UNIT	1				
015		265995-6	TAPPING SCREW 4X18	2				
016		136840-1	HANDLE COVER ASSEMBLY	1				
	C10	263005-3	RUBBER PIN 6	1				
017		8586E4-5	HS012G SERIAL NO. LABEL	1				
018		911128-8	P.H.SCREW M4X16 WITH WR	1				
019		455483-3	DUCT	1				
020		122D67-3	HOOK ASSEMBLY	1				
021		911233-1	PAN HEAD SCREW M5X20	2				
022		210022-4	BALL BEARING 626DDW	1				
023		519778-9	ROTOR ASSEMBLY	1				
	D10		INC. 22,24					
024		211491-2	BALL BEARING 609DDW	1				
025		346837-4	SHAFT LOCK	1				
026		286039-9	CAP	1				
027		233117-6	COMPRESSION SPRING 6	1				
029		183Y42-0	BLADE CASE SET	1				
	C10	213953-6	O RING 24	1				
	C20	8007R2-2	XGT LOGO LABEL	1				
030		262552-1	RUBBER SLEEVE 6	1				
031		265115-2	+ PAN HEAD SCREW M5	1				
032		266194-3	FLAT HEAD SCREW M6X90	1				
033		213565-5	O RING 42	1				
034		210206-4	BALL BEARING 606ZZ	1				
035		961052-5	RETAINING RING (EXT) S-12	1				
036		227A40-1	HELICAL GEAR 52	1				
037		257349-1	SLEEVE 12	1				
038		319212-7	BEARING BOX	1				
039		347B30-5	THICKNESS RING 34	1				
040		211131-2	BALL BEARING 6001DDW	1				
041		911223-4	PAN HEAD SCREW M5X16	2				
042		326459-6	SPINDLE	1				
043		285845-9	BEARING RETAINER 19-29	1				
044		231878-2	TENSION SPRING 4	1				
045		961152-1	RETAINING RING (EXT) S-34	1				
046		312D77-0	SAFETY COVER	1				
047		224593-5	INNER FLANGE 35	1				
048		224409-4	OUTER FLANGE 35	1				
049		266924-2	HEX. SOCKET HEX. BOLT M6X18	1				
050		271474-4	LEVER 37	1				
051		266034-5	TAPPING SCREW CT 4X16	1				
052		252320-0	HEX. NUT M6	1				
053		257982-9	BOW STOP RING E-8	1				
054		271446-9	LEVER 45	1				
055		251370-2	+ PAN HEAD SCREW M5	1				
056		413N47-3	DIAL 27	1				
057		216008-6	STEEL BALL 4	1				
058		233314-4	COMPRESSION SPRING 4	1				
059		266436-5	H.S.SET SCREW(FLAT POINT)M5X8	1				

A:HS012GZ(N)

Interchange  
O : Yes  
X : No  
< : the new part can be substituted for the current.  
> : the current part can be substituted for the new.  
S : Interchangeable as a set.

