



VN	VIETNAM
----	---------

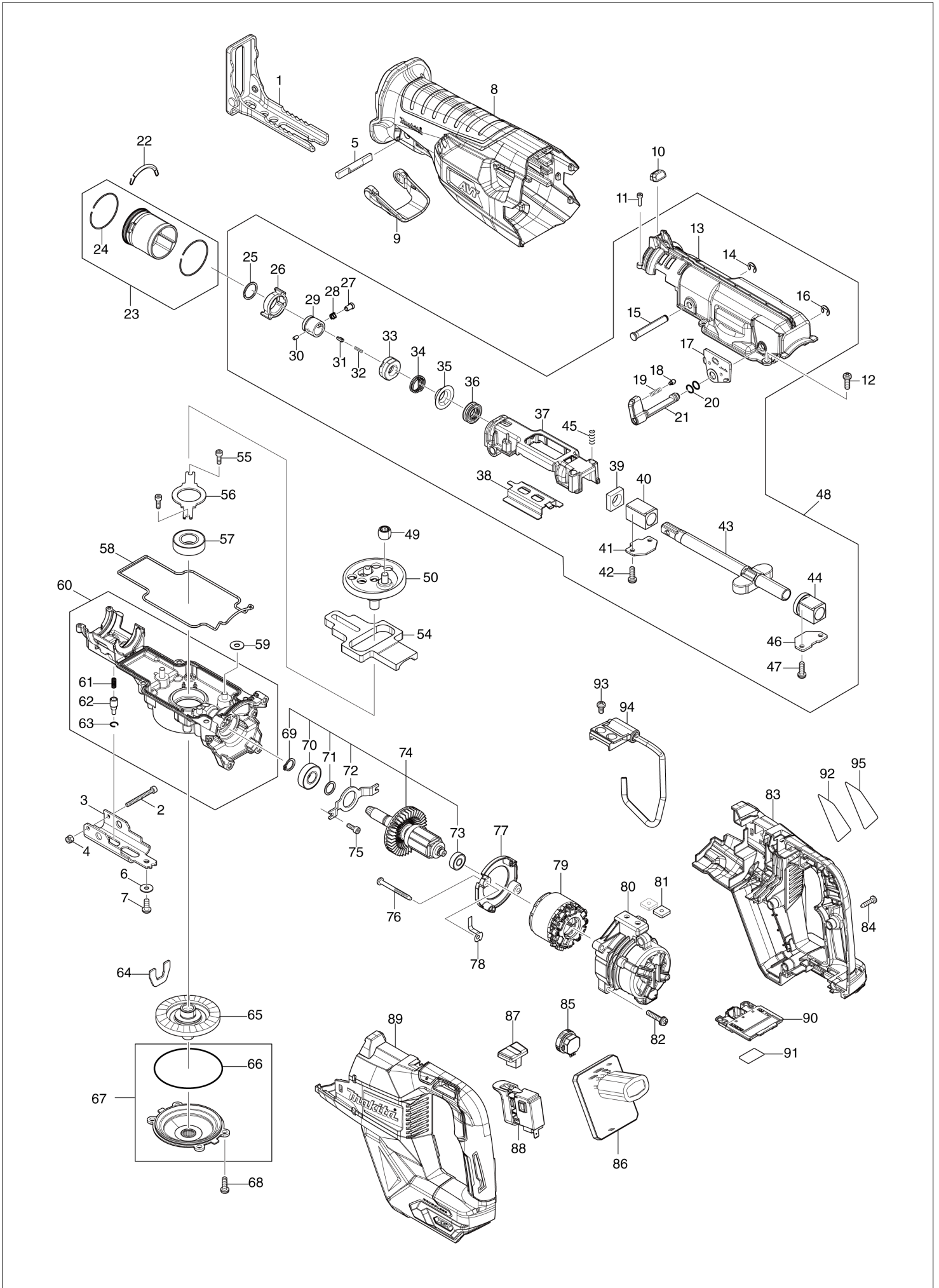
Diagram / Parts List

JR002G

CORDLESS RECIPRO SAW



(VN) JR002G / CORDLESS RECIPRO SAW



VN	VIETNAM
-----------	----------------

JR002G / CORDLESS RECIPRO SAW

Item	Sub	Parts No.	Parts Description	Qty	I/C	E/C No.	Close No.	Remark
001		162B43-3	SHOE	1				
002		265A78-8	HEX SOCKET HEAD BOLT M4X40	1				
003		347972-1	SHOE GUIDE PLATE	1				
004		252126-6	HEX. LOCK NUT M4-7	1				
005		326599-0	LOCK PIN	1				
006		253194-2	FLAT WASHER 5	1				
007		266169-2	H.S. BUTTON HEAD BOLT M5X12	1				
008		422869-6	INSULATION COVER	1				
009		413F39-4	LOCK LEVER	1				
010		620H78-1	LED CIRCUIT	1				
011		265910-0	HEX. SOCKET HEAD BOLT M3X12	2				
012		911225-0	PAN HEAD SCREW M5X16	4				
013		141H98-7	GEAR HOUSING COVER COMPLETE	1				
	C10	422867-0	SEAL PLATE	1				
014		961012-7	STOP RING E-6	1				
015		268012-1	PIN 7	1				
016		961012-7	STOP RING E-6	1				
017		413F41-7	PLATE C	1				
018		413F45-9	PIN 5	1				
019		232745-4	COMPRESSION SPRING 3	1				
020		213021-5	O RING 5	2				
021		271471-0	LEVER 24	1				
022		232583-4	TENSION SPRING 3	1				
023		136707-3	RELEASE DRUM ASS'Y	1				
	D10		INC. 24					
024		232746-2	RING SPRING 39	2				
025		257430-8	RETAINING RING(EXT)18	1				
026		313418-9	DRIVING SLEEVE	1				
027		256569-4	SHOULDER PIN 5	1				
028		234381-2	COMPRESSION SPRING 6	1				
029		327650-9	GUIDE SLEEVE	1				
030		256A11-1	PIN 3	1				
031		310912-2	PUSH PIN	1				
032		232472-3	COMPRESSION SPRING 2	1				
033		413F43-3	CONNECTING SLEEVE	1				
034		233594-2	TORSION SPRING 17	1				
035		257742-9	SHOULDER SLEEVE 14	1				
036		213174-0	X RING 14	1				
037		141H95-3	SLIDER SUPPORT COMPLETE	1				
038		347973-9	SLIDE PLATE	1				
039		423343-7	SEAL PLATE 14	1				
040		214212-1	PLANE BEARING 14A	1				
041		345485-6	PLATE A	1				
042		911225-0	PAN HEAD SCREW M5X16	2				
043		162B44-1	SLIDER	1				
044		141H97-9	BEARING COMPLETE	1				
045		233038-2	COMPRESSION SPRING 5	2				
046		345486-4	PLATE B	1				
047		911225-0	PAN HEAD SCREW M5X16	2				
048		136683-1	GEAR HOUSING COVER ASS'Y	1				
	D10		INC. 13-21,25-47					
049		212957-5	NEEDLE BEARING 710	1				
050		136712-0	CRANK CAM ASS'Y	1				
054		313419-7	COUNTER WEIGHT	1				
055		922117-8	HEX. SOCKET HEAD BOLT M4X12	2				
056		285051-6	BEARING RETAINER 80	1				
057		211251-2	BALL BEARING 6003LLB	1				
058		422868-8	SEAL RING	1				
059		253804-1	FLAT WASHER 6	3				
060		136676-8	GEAR HOUSING ASS'Y	1				
	D10		INC. 61-63					
061		234084-8	COMPRESSION SPRING 3	1				
062		256A09-8	SHOULDER PIN 8	1				
063		232335-3	RING SPRING 8	1				
064		347974-7	PLATE D	1				

B:

Interchange
 O : Yes
 X : No
 < : the new part can be substituted for the current.
 > : the current part can be substituted for the new.
 S : Interchangeable as a set.

