



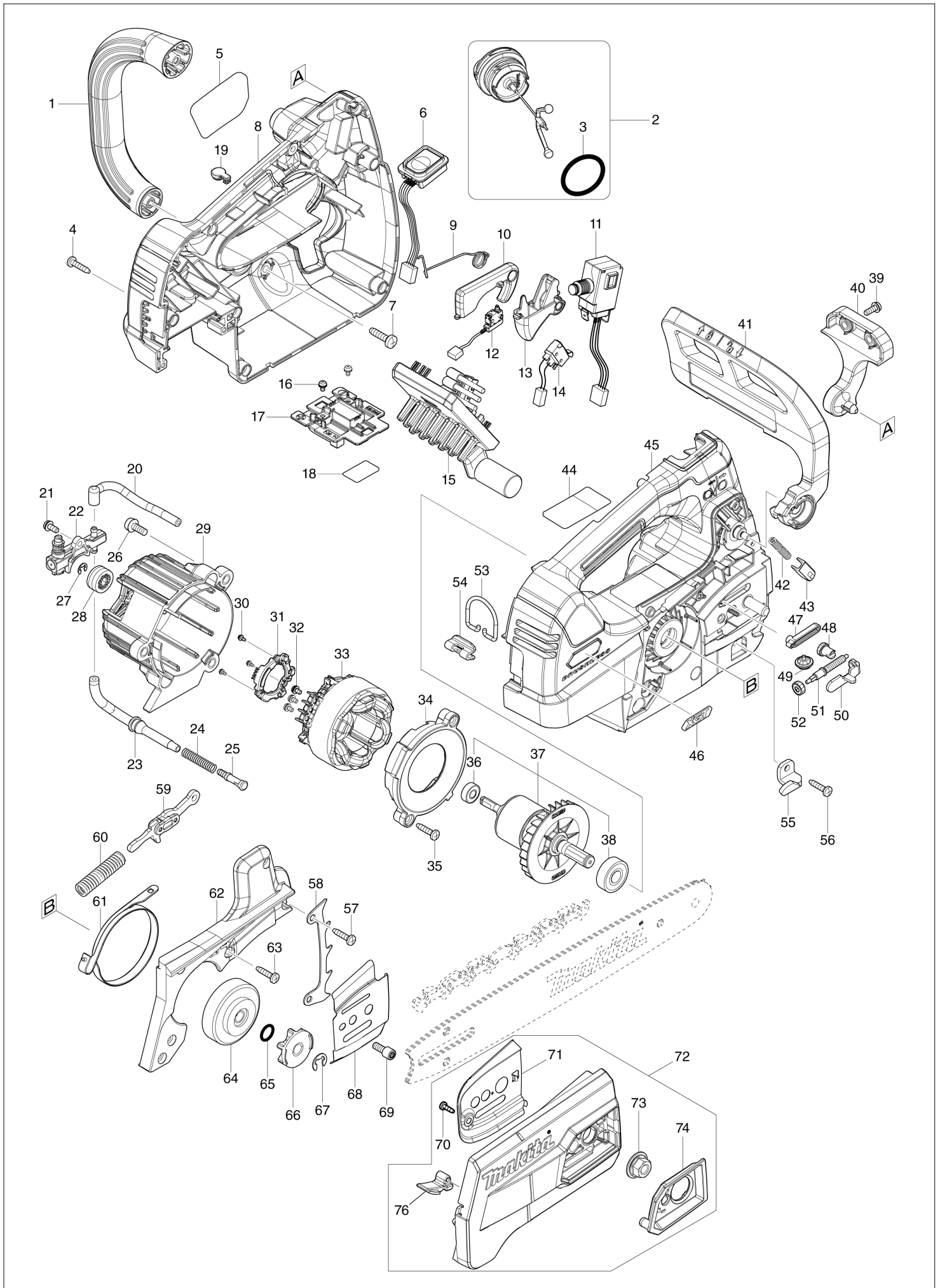
VN	VIETNAM
----	---------

Diagram / Parts List

UC007G

CORDLESS CHAIN SAW

(VN) UC007G / CORDLESS CHAIN SAW



VN	VIETNAM
-----------	----------------

UC007G / CORDLESS CHAIN SAW

Item	Sub	Parts No.	Parts Description	Qty	I/C	E/C No.	Close No.	Remark
001		413979-0	FRONT HANDLE	1				
002		122A77-2	TANK CAP ASSEMBLY	1				
	D10		INC. 3					
003		213080-9	O RING 29.5	1				
004		266326-2	TAPPING SCREW 4X18	8				
005		8050G9-4	UC007G MODEL NO. LABEL	1				
006		141G07-0	SWITCH CIRCUIT COMPLETE	1				
	C10	810D46-0	SWITCH LABEL	1				
007		266420-0	TAPPING SCREW 5X20	2				
008		183U56-5	HOUSING SET	1				
	C10	263005-3	RUBBER PIN 6	2				
	D10		INC. 19,45					
009		232713-7	TORSION SPRING 10	1				
010		413987-1	CATCH LEVER	1				
011		650011-1	SWITCH C3JR-4BM-PAND3	1				
012		632L49-0	SWITCH UNIT	1				
013		459282-5	SWITCH LEVER	1				
014		632L48-2	SWITCH UNIT	1				
015		620F72-1	CONTROLLER	1				
016		652031-1	PAN HEAD SCREW M3X6	2				
017		632S63-8	TERMINAL UNIT	1				
018		8118E3-0	UC007G SERIAL NO. LABEL	1				
019		422467-6	CAP	1				
020		422764-0	OIL TUBE 3-85	1				
021		911113-1	PAN HEAD SCREW M4X10 WITH WR	1				
022		142156-4	OIL PUMP COMPLETE	1				
023		422765-8	OIL TUBE 3-109	1				
024		231975-4	SPRING	1				
025		452666-6	NIPPLE	1				
026		911218-7	PAN HEAD SCREW M5X14	3				
027		961011-9	STOP RING E-4	1				
028		226884-0	WORM GEAR	1				
029		413904-1	MOTOR HOUSING	1				
030		652093-9	PAN HEAD SCREW M2X5	3				
031		620F73-9	SENSOR UNIT	1				
032		652069-6	FLAT HEAD SCREW M3X6	3				
033		629A85-9	STATOR	1				
034		413980-5	BAFFLE PLATE	1				
035		266326-2	TAPPING SCREW 4X18	2				
036		210026-6	BALL BEARING 696ZZ	1				
037		519710-3	ROTOR ASSY	1				
	D10		INC. 36,38					
038		210059-1	BALL BEARING 6000DDW	1				
039		911118-1	PAN HEAD SCREW M4X12	2				
040		413907-5	FRONT HAND GUARD RETAINER	1				
041		141G09-6	FRONT HAND GUARD COMPLETE	1				
	C10	8042N9-2	CAUTION LABEL	1				
042		232714-5	COMPRESSION SPRING 3	1				
043		313212-9	HAND GUARD GUIDE	1				
044		8118E2-2	UC007G NAME PLATE	1				
045		183U56-5	HOUSING SET	1				
	C10	263005-3	RUBBER PIN 6	2				
	D10		INC. 8,19					
046		8012U4-2	XGT LOGO LABEL	1				
047		422466-8	GROMET	1				
048		227620-7	DRIVE GEAR 14	1				
049		227634-6	STRAIGHT BEVEL GEAR 14	1				
050		347517-5	TENSION SLIDE	1				
051		327317-9	ADJUST SCREW	1				
052		227496-2	STRAIGHT BEVEL GEAR 14	1				
053		281222-3	HOOK	1				
054		347514-1	HOOK SUPPORT	1				
055		347516-7	CHAIN CATCHER	1				
056		266326-2	TAPPING SCREW 4X18	1				
057		266326-2	TAPPING SCREW 4X18	2				

Interchange
O : Yes
X : No
< : the new part can be substituted for the current.
> : the current part can be substituted for the new.
S : Interchangeable as a set.

