



# Angle Grinder GA5080R 125 mm (5")



## Just One Click



Pull & Release

## XLOCK

Quick and Easy Wheel Change System

Snap-in in a second



Continuous Rating Input

**1,400 w**

GA5080R:

**with Anti-restart function**

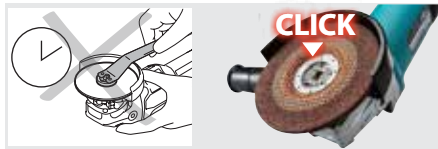


# Quick and easy wheel change

## X-LOCK



**Just one click to attach the accessories**  
easy removal just simply pull the lever



**No downtime**  
of installing and removing the accessories.  
Improve your work efficiency and work environment



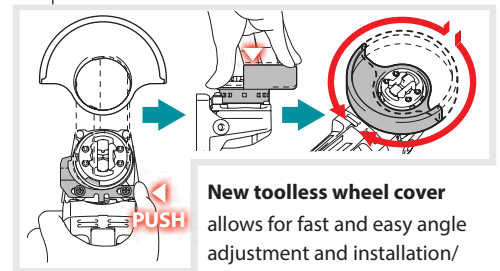
**No tool required**  
X-LOCK mechanism ensures that the accessory is properly mounted to the tool even without nut, flange, and spanner.



**No over-tightening**  
X-LOCK accessories are firmly attached and cannot be mounted incorrectly.



**No scratching workpiece**  
by nuts even when flat grinding.



**New toolless wheel cover**  
allows for fast and easy angle adjustment and installation/removal of wheel cover.



**Function of LED light**  
GA5080R only



**Solid Green indicates that**  
the tool is ready to work.



**Anti-restart function**  
prevents accidental startup  
Even if plugged in with the switch "ON", the tool does not start with a blinking red light for visual warning.

### Accessories

#### Dust Collection wheel guard

for Diamond wheel  
Part No. 191G05-4



#### Wheel cover

for abrasive cut-off wheel  
Part No. 162708-5  
Part No. 140U29-1 (for US)



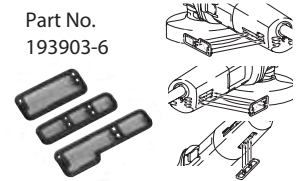
#### Anti-vibration grip

Part No. 194514-0



#### Dust cover attachment set

Part No.  
193903-6



#### 125mm X-LOCK wheels

125mm X-LOCK accessories are compatible with conventional angle grinders.

#### Grinding wheel / Metal

Part No. E-00393(EN)



#### Thin Cut-off wheel (Flat)

Part No. E-00418(EN)



#### Grinding wheel / Stainless

Part No. E-00402(EN)



#### Diamond wheel / concrete

Part No. E-02076



## Angle Grinder

### GA5080R 125 mm (5")

318 mm

Double Insulation	1,400W
Constant Speed	<b>Wheel Diameter/ Hole Diameter</b> 125 mm (5") / 22.3 mm (7/8")
Soft Start	<b>Max Cutting Depth</b> 31 mm (1-1/4")
Dust Collection	<b>No Load Speed (RPM)</b> 12,000
	<b>Vibration Level</b> Surface Grinding w/ Normal Side Grip: 7.5m/s <sup>2</sup>
	<b>Sound Pressure Level</b> 84dB(A)
	<b>Sound Power Level</b> 95dB(A)
	<b>Dimensions</b> 309 x 141 x 113 mm (12-1/8 x 5-9/16 x 4-7/16")
	<b>Net weight</b> 2.5 - 3.6 kg (5.5 - 7.9 lbs.)
	<b>Power supply cord</b> 2.5 m (8.2 ft)

**Standard Equipment :** Grinding wheel inox 125 X-Lock (E-00402), grip 36 (153489-2), wheel cover 125 (347618-9)

The weight may differ depending on the attachment(s), including the battery cartridge.  
The lightest and heaviest combination, according to EPTA-Procedure 01/2014, are shown in the table.  
Items of standard equipment and specifications may vary by country or area.

## CÔNG TY TNHH MAKITA VIỆT NAM

Kho 4-5-6, Block 16, 18/12 Đường số 3, KCN VSP, P. Hòa Phú, TP. Thủ Đức, Bình Dương  
ĐT: 0274 362 8338 - Fax: 0274 362 8339 - Website: www.makita.com.vn

#### CHI NHÁNH CTY TNHH MAKITA VN TẠI MIỀN BẮC

Kho 5, Số 1, Đường Số 6, KCN - BT - DV VSP, Bắc Ninh, P. Phú Châu, TP. Bắc Ninh, TP. Từ Sơn, T. Bắc Ninh.  
ĐT: 0222 376 5942 Fax: 0222 376 5941

#### TRUNG TÂM DỊCH VỤ KHÁCH HÀNG CHI NHÁNH HÀ NỘI

65 Trường Chinh, P. Phương Liệt, Q. Thanh Xuân, TP. Hà Nội.  
ĐT: 0243 202 2385

#### TRUNG TÂM DỊCH VỤ KHÁCH HÀNG CHI NHÁNH ĐÀ NẴNG

102 Trần Nữ Hoàng, P. Hải Châu 2, Q. Hải Châu, TP. Đà Nẵng.  
ĐT: 0236 352 5078 / 0236 352 5178 Fax: 0236 352 5479

#### TRUNG TÂM DỊCH VỤ KHÁCH HÀNG CHI NHÁNH CẦN THƠ

386 Võ Văn Kiệt, Khu Vực 5, P. An Thới, Q. Bình Thủy, TP. Cần Thơ.  
ĐT: 0292 389 4358 Fax: 0292 389 4358

#### TRUNG TÂM DỊCH VỤ KHÁCH HÀNG CHI NHÁNH BUỒN MA THUỘT

89 Lê Đức Thọ, P. Thống Nhất, TP. Buon Ma Thuột, T. Đắk Lắk.  
ĐT: 0262 355 4556 Fax: 0262 355 4557

#### TRUNG TÂM DỊCH VỤ KHÁCH HÀNG CHI NHÁNH HẢI PHÒNG

Số 01 Lô D1-01, Dãy an Hoàng Huy Riverside, P. Thượng Lý, Q. Hồng Bàng, TP. Hải Phòng.  
ĐT: 0225 883 1529

#### TRUNG TÂM DỊCH VỤ KHÁCH HÀNG CHI NHÁNH NHA TRANG

Là 36/36 đường B6, Khu đô thị Vinhomes Trung, Xã Vĩnh Ngọc, TP. Nha Trang, T. Khánh Hòa  
ĐT: 0258 220 0039

#### TRUNG TÂM DỊCH VỤ KHÁCH HÀNG CHI NHÁNH HỒ CHÍ MINH

Số 12 Trịnh Văn Căn, P. Cầu Ông Lãnh, Q. 1, TP. Hồ Chí Minh.  
ĐT: 0283 821 5191

A4-052023-1