



VN	VIETNAM
----	---------

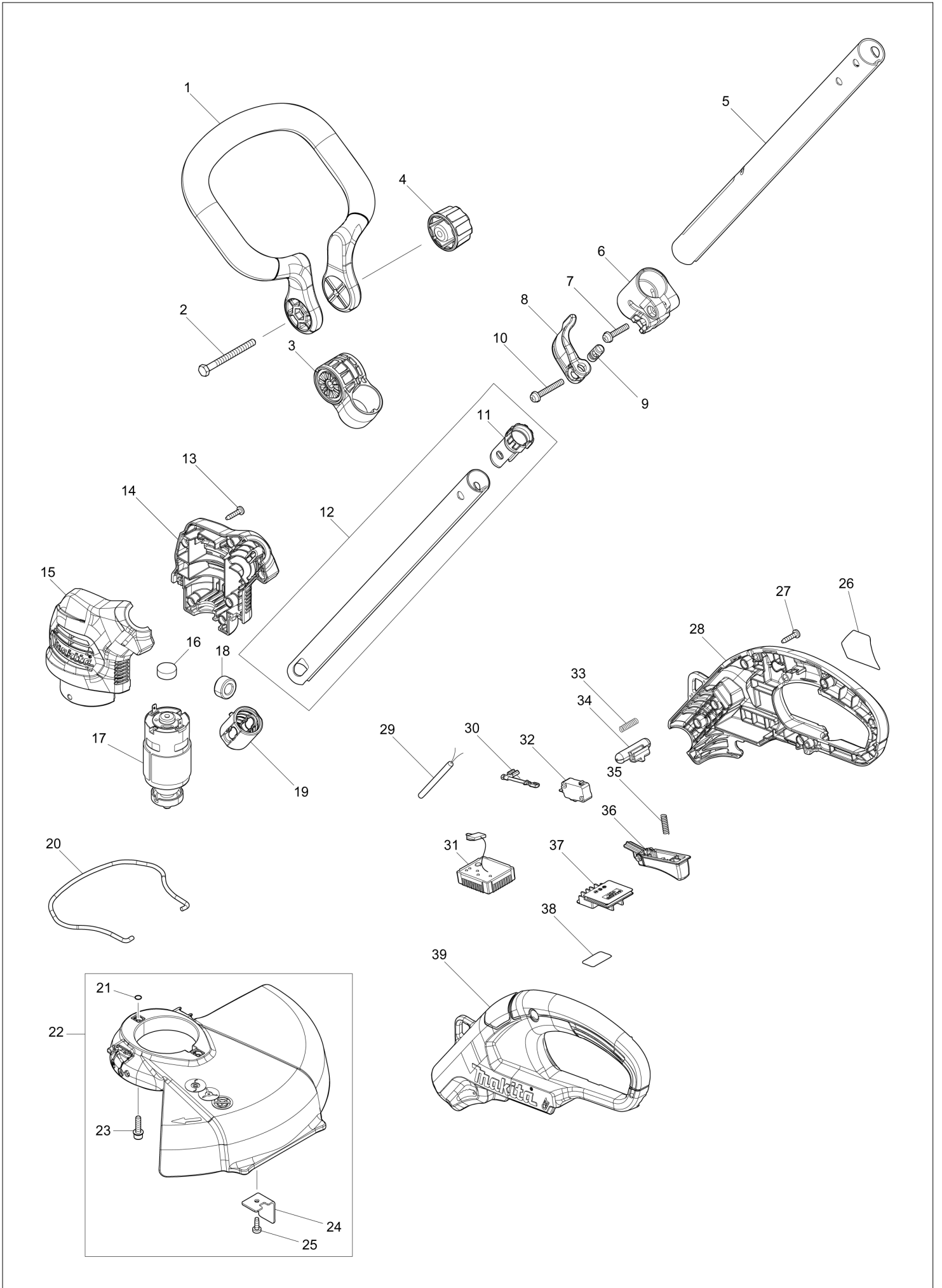
# Diagram / Parts List

**UR100D**

**CORDLESS GRASS TRIMMER**



(VN) UR100D / CORDLESS GRASS TRIMMER



<b>VN</b>	<b>VIETNAM</b>
-----------	----------------

## UR100D / CORDLESS GRASS TRIMMER

Item	Sub	Parts No.	Parts Description	Qty	I/C	E/C No.	Close No.	Remark
001		458505-8	FRONT GRIP	1				
002		921387-6	HEX. BOLT M6X65	1				
003		458260-2	GRIP HOLDER	1				
004		264072-1	THUMB NUT M6	1				
	C10	931302-2	HEX. NUT M6	1		Y08676		
005		144939-8	PIPE 28 COMPLETE A	1				
	C10	808723-2	CAUTION LABEL	1				
	C20	816F56-7	CAUTION LABEL	1				
006		458256-3	SLEEVE	1				
	C10	252103-8	HEX. LOCK NUT M5-8	2				
007		911243-8	PAN HEAD SCREW M5X25	1				
008		458257-1	LEVER	1				
009A		319667-6	PIN 9	1			C2585	
009B		319667-6	PIN 9	1			C2585	
009C		319667-6	PIN 9	1			C2585	
009D		319667-6	PIN 9	1			C2585	
009-1A		327190-7	PIN9	1	X	C2585		
009-1B		327190-7	PIN9	1	X	C2585		
009-1C		327190-7	PIN9	1	X	C2585		
009-1D		327190-7	PIN9	1	X	C2585		
009-1E		327190-7	PIN9	1				
010		911258-5	PAN HEAD SCREW M5X35	1				
011		458258-9	PIPE CAP	1				
012		135952-7	PIPE24 ASS'Y	1				
	D10		INC. 11					
013		266326-2	TAPPING SCREW 4X18	6				
014A		183H91-5	MOTOR HOUSING SET	1				
014B		183H91-5	MOTOR HOUSING SET	1				
014C		183H91-5	MOTOR HOUSING SET	1				
014D		183H91-5	MOTOR HOUSING SET	1				
014E		183T32-3	MOTOR HOUSING SET	1				
	C10	346275-0	PLATE	2				
	D10		INC. 15					
015A		183H91-5	MOTOR HOUSING SET	1				
015B		183H91-5	MOTOR HOUSING SET	1				
015C		183H91-5	MOTOR HOUSING SET	1				
015D		183H91-5	MOTOR HOUSING SET	1				
015E		183T32-3	MOTOR HOUSING SET	1				
	C10	346275-0	PLATE	2				
	D10		INC. 14					
016		421940-3	CAP	1				
017		629317-8	DC MOTOR	1				
019		424567-8	RUBBER SLEEVE 24	1				
020		327065-0	WIRE GUARD	1				
021		213023-1	O RING 4	2				
022		135950-1	PROTECTOR ASS'Y	1				
	D10		INC. 21,23-25					
023		911139-3	PAN HEAD SCREW M4X20 WG	2				
024		346555-4	CORD CUTTER	1				
025		266427-6	TAPPING SCREW 4X12	1				
026		854A93-3	UR100D NAME PLATE	1				
027		266326-2	TAPPING SCREW 4X18	6				
028A		183H89-2	HANDLE SET	1				
028B		183H89-2	HANDLE SET	1				
028C		183H89-2	HANDLE SET	1				
028D		183H89-2	HANDLE SET	1				
028E		183T33-1	HANDLE SET	1				
	C10	263002-9	RUBBER PIN 4	4				
	D10		INC. 39					
029		699113-8	POWER SUPPLY CORD UNIT	1				
030		632L22-0	LEAD UNIT	1				
031		620780-8	CONTROLLER	1				
032		650744-8	SWITCH D3V-16-3C26	1				
033		231473-8	COMPRESSION SPRING 4	1				
034A		452438-9	LOCK OFF BUTTON	1			C2585	

A:UR100DZ(N)  
 B:UR100DWYE(H)  
 C:UR100DWAE(H)  
 D:UR100DWME(H)  
 E:UR100DSAP(H)

Interchange  
 O : Yes  
 X : No  
 < : the new part can be substituted for the current.  
 > : the current part can be substituted for the new.  
 S : Interchangeable as a set.

