



|    |         |
|----|---------|
| VN | VIETNAM |
|----|---------|

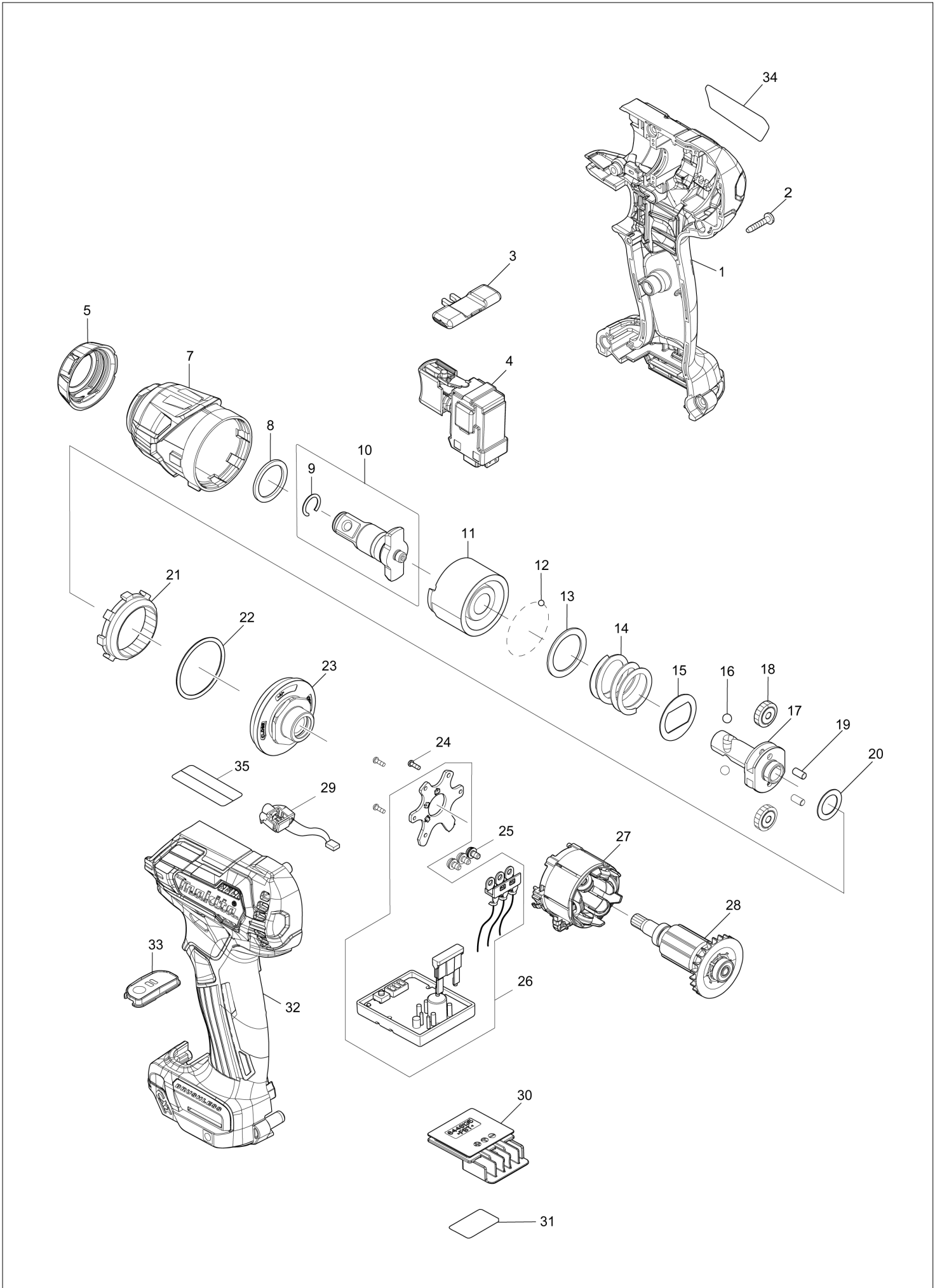
# Diagram / Parts List

**TW161D**

**CORDLESS IMPACT WRENCH**



# (VN) TW161D / CORDLESS IMPACT WRENCH



|           |                |
|-----------|----------------|
| <b>VN</b> | <b>VIETNAM</b> |
|-----------|----------------|

## TW161D / CORDLESS IMPACT WRENCH

| Item   | Sub | Parts No. | Parts Description        | Qty | I/C | E/C No. | Close No. | Remark |
|--------|-----|-----------|--------------------------|-----|-----|---------|-----------|--------|
| 001    |     | 183L31-7  | HOUSING SET              | 1   |     |         |           |        |
|        | C10 | 263002-9  | RUBBER PIN 4             | 2   |     |         |           |        |
|        | C20 | 252126-6  | HEX. LOCK NUT M4-7       | 2   |     |         |           |        |
|        | D10 |           | INC. 32                  |     |     |         |           |        |
| 002    |     | 266429-2  | TAPPING SCREW 3X16       | 9   |     |         |           |        |
| 003    |     | 455053-8  | F/R CHANGE LEVER         | 1   |     |         |           |        |
| 004    |     | 143975-1  | SWITCH COMPLETE          | 1   |     |         |           |        |
|        | C10 | 424890-1  | SWITCH COVER             | 1   |     |         |           |        |
| 005    |     | 422407-4  | BUMPER                   | 1   |     |         |           |        |
| 007    |     | 140K41-1  | HAMMER CASE COMPLETE     | 1   |     |         |           |        |
|        | C10 | 213882-3  | O-RING 16                | 1   |     |         |           |        |
| 008    |     | 261159-0  | NYLON WASHER 19          | 1   |     |         |           |        |
| 009    |     | 231907-1  | RING SPRING 10           | 1   |     |         |           |        |
| 010    |     | 136030-6  | ANVIL E ASSY             | 1   |     |         |           |        |
|        | D10 |           | INC. 9                   |     |     |         |           |        |
| 011    |     | 327200-0  | HAMMER                   | 1   |     |         |           |        |
| 012    |     | 216019-1  | STEEL BALL 3             | 24  |     |         |           |        |
| 013    |     | 267352-4  | FLAT WASHER 22           | 1   |     |         |           |        |
| 014    |     | 232516-9  | COMPRESSION SPRING 21    | 1   |     |         |           |        |
| 015    |     | 267813-4  | WASHER 21                | 1   |     |         |           |        |
| 016    |     | 216002-8  | STEEL BALL 4.8           | 2   |     |         |           |        |
| 017    |     | 327046-4  | SPINDLE                  | 1   |     |         |           |        |
| 018    |     | 227213-0  | SPUR GEAR 17             | 2   |     |         |           |        |
| 019    |     | 268217-3  | PIN 3.5                  | 2   |     |         |           |        |
| 020    |     | 253052-2  | FLAT WASHER 12           | 1   |     |         |           |        |
| 021    |     | 227316-0  | INTERNAL GEAR 43         | 1   |     |         |           |        |
| 022    |     | 213479-8  | O RING 33                | 1   |     |         |           |        |
| 023    |     | 140G75-0  | BEARING BOX COMPLETE     | 1   |     |         |           |        |
|        | C10 | 213845-9  | O-RING 13                | 1   |     |         |           |        |
| 024    |     | 266490-9  | TAPPING SCREW PT 2X6     | 3   |     |         |           |        |
| 025    |     | 652069-6  | FLAT HEAD SCREW M3X6     | 3   |     |         |           |        |
| 026    |     | 620998-1  | CONTROLLER               | 1   |     |         |           |        |
| 027    |     | 629398-2  | STATOR                   | 1   |     |         |           |        |
| 028    |     | 619491-0  | ROTOR                    | 1   |     |         | D0256     |        |
| 028-1  |     | 619491-0  | ROTOR                    | 1   | O   | D0256   |           |        |
| 029    |     | 620999-9  | LED CIRCUIT              | 1   |     |         |           |        |
| 030    |     | 644813-5  | TERMINAL                 | 1   |     |         |           |        |
| 031    |     | 855S26-9  | TW161D SERIAL NO. LABEL  | 1   |     |         |           |        |
| 032    |     | 183L31-7  | HOUSING SET              | 1   |     |         |           |        |
|        | C10 | 263002-9  | RUBBER PIN 4             | 2   |     |         |           |        |
|        | C20 | 252126-6  | HEX. LOCK NUT M4-7       | 2   |     |         |           |        |
|        | D10 |           | INC. 1                   |     |     |         |           |        |
| 033    |     | 140G52-2  | SWITCH PLATE COMPLETE    | 1   |     |         |           |        |
|        | C10 | 818X19-7  | SWITCH LABEL             | 1   |     |         |           |        |
| 034    |     | 855S19-6  | TW161D NAME PLATE        | 1   |     |         |           |        |
| A01    |     | 266622-8  | + TRUSS HEAD SCREW M4X12 | 1   |     |         |           |        |
| A02    |     | 346909-5  | HOOK                     | 1   |     |         |           |        |
| A03B   |     | 821661-1  | PLASTIC CARRYING CASE    | 1   |     |         |           |        |
|        | C10 | 417724-5  | LATCH                    | 2   |     |         |           |        |
| A03C   |     | 821661-1  | PLASTIC CARRYING CASE    | 1   |     |         |           |        |
|        | C10 | 417724-5  | LATCH                    | 2   |     |         |           |        |
| A03D   |     | 821661-1  | PLASTIC CARRYING CASE    | 1   |     |         |           |        |
|        | C10 | 417724-5  | LATCH                    | 2   |     |         |           |        |
| A04B   |     | ***DC10SB | DC10SB BATTERY CHARGER   | 1   |     |         |           |        |
|        | D10 |           | COMPO-PARTS              |     |     |         |           |        |
| A04C   |     | ***DC10SB | DC10SB BATTERY CHARGER   | 1   |     |         |           |        |
|        | D10 |           | COMPO-PARTS              |     |     |         |           |        |
| A04D   |     | ***DC10SB | DC10SB BATTERY CHARGER   | 1   |     |         |           |        |
|        | D10 |           | COMPO-PARTS              |     |     |         |           |        |
| A05B   |     | 197393-5  | BATTERY BL1016 SET       | 2   |     |         |           |        |
| A05C   |     | 197396-9  | BATTERY BL1021B SET      | 2   |     |         | C5226     |        |
| A05D   |     | 197406-2  | BATTERY BL1041B SET      | 2   |     |         | C5227     |        |
| A05-1C |     | 197396-9  | BATTERY BL1021B SET      | 2   | O   | C5226   |           |        |
| A05-1D |     | 197406-2  | BATTERY BL1041B SET      | 2   | O   | C5227   |           |        |
| A06B   |     | 456128-6  | BATTERY COVER            | 1   |     |         |           |        |

B:TW161DSYE(H)  
C:TW161DSAE(H)  
D:TW161DSME(H)

Interchange  
O : Yes  
X : No  
< : the new part can be substituted for the current.  
> : the current part can be substituted for the new.  
S : Interchangeable as a set.

