



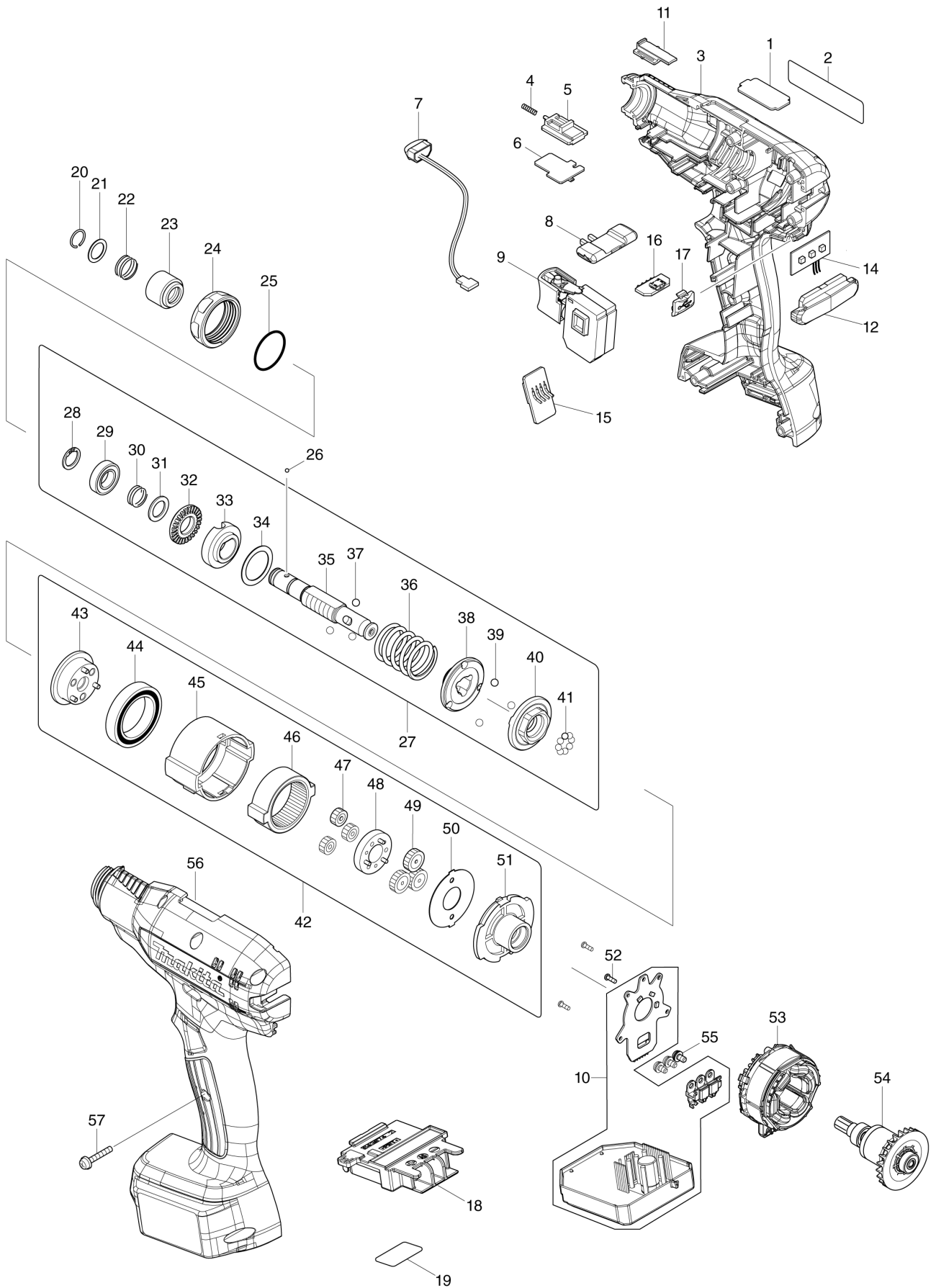
VN	VIETNAM
----	---------

# Diagram / Parts List

**DFT025F**

**CORDLESS SCREWDRIVER**

# (VN) DFT025F / CORDLESS SCREWDRIVER



<b>VN</b>	<b>VIETNAM</b>
-----------	----------------

### DFT025F / CORDLESS SCREWDRIVER

Item	Sub	Parts No.	Parts Description	Qty	I/C	E/C No.	Close No.	Remark
001		345647-6	PLATE L	1				
002		857U36-4	DFT025F NAME PLATE	1				
003		183R48-6	HOUSING SET	1				
	C10	263005-3	RUBBER PIN 6	2				
	C20	931002-4	HEX. NUT M3	7				
	D10		INC. 56					
004		233025-1	COMPRESSION SPRING 2	1				
005		140U90-8	SWITCH LEVER COMPLETE	1				
006		620D61-4	SENSOR CIRCUIT	1				
007		620521-2	LED CIRCUIT	1				
008		457469-3	F/R CHANGE LEVER	1				
009		651082-1	SWITCH C3JW-1B-S	1				
010		620D88-4	CONTROLLER	1				
011		412712-7	CHANGE PLATE	1				
012		457484-7	LENS	1				
014		620622-6	LED CIRCUIT	1				
015		620621-8	BUZZER CIRCUIT	1				
016		620A99-1	USB CIRCUIT	1				
017		144709-5	USB COVER COMPLETE	1				
018		643874-2	TERMINAL	1				
019		857U40-3	DFT025F SERIAL NO. LABEL	1				
020		233930-2	RING SPRING 9	1				
021		267070-4	FLAT WASHER 10	1				
022		232374-3	COMPRESSION SPRING 10A	1				
023		161607-8	BIT SLEEVE	1				
024		457530-6	LOCK NUT M28 BLACK	1				
025		213836-0	O-RING 22	1				
026		216015-9	STEEL BALL 2.4	2				
027		123938-3	CLUTCH ASS'Y 2N	1			D9016	
	D10		INC. 28-41				D9016	
027-1		122B06-1	CLUTCH ASSEMBLY 2N	1	<	D9016		
	D10		INC. 28-41			D9016		
028		961026-6	RETAINING RING S-10	1				
029		210076-1	BALL BEARING 6800LLB	1				
030		232375-1	COMPRESSION SPRING 10B	1				
031		267047-9	FLAT WASHER 10	1				
032		326953-8	LOCK NUT M12	1				
033		144421-7	ADJUST RING COMPLETE	1				
034		253391-0	FLAT WASHER 18	1				
035		326945-7	SPINDLE N	1			D9016	
035-1		327898-3	SPINDLE N	1	<	D9016		
036		232372-7	COMPRESSION SPRING 18A	1				
037		216024-8	STEEL BALL 4	3				
038		223185-7	CAM A	1				
039		216024-8	STEEL BALL 4	3				
040		223186-5	CAM B	1				
041		216001-0	STEEL BALL 3.5	8				
042		127682-4	GEAR ASSEMBLY O	1				
	D10		INC. 43-51					
043		144424-1	CARRIER COMPLETE B	1				
044		211375-4	BALL BEARING 6805LLB	1				
045		412713-5	GEAR CASE	1				
046		221546-5	INTERNAL GEAR 47	1				
047		221543-1	SPUR GEAR 13	3				
048		144422-5	SPUR GEAR 20 COMPLETE	1				
049		221544-9	SPUR GEAR 18	3				
050		267774-8	LOCK WASHER	1				
051		418003-4	MOTOR BRACKET	1				
052		266490-9	TAPPING SCREW PT 2X6	3				
053		629A21-5	STATOR	1				
054		619440-7	ROTOR	1				
055		652069-6	FLAT HEAD SCREW M3X6	3				
056		183R48-6	HOUSING SET	1				
	C10	263005-3	RUBBER PIN 6	2				
	C20	931002-4	HEX. NUT M3	7				

Interchange  
O : Yes  
X : No  
< : the new part can be substituted for the current.  
> : the current part can be substituted for the new.  
S : Interchangeable as a set.

