



VN	VIETNAM
----	---------

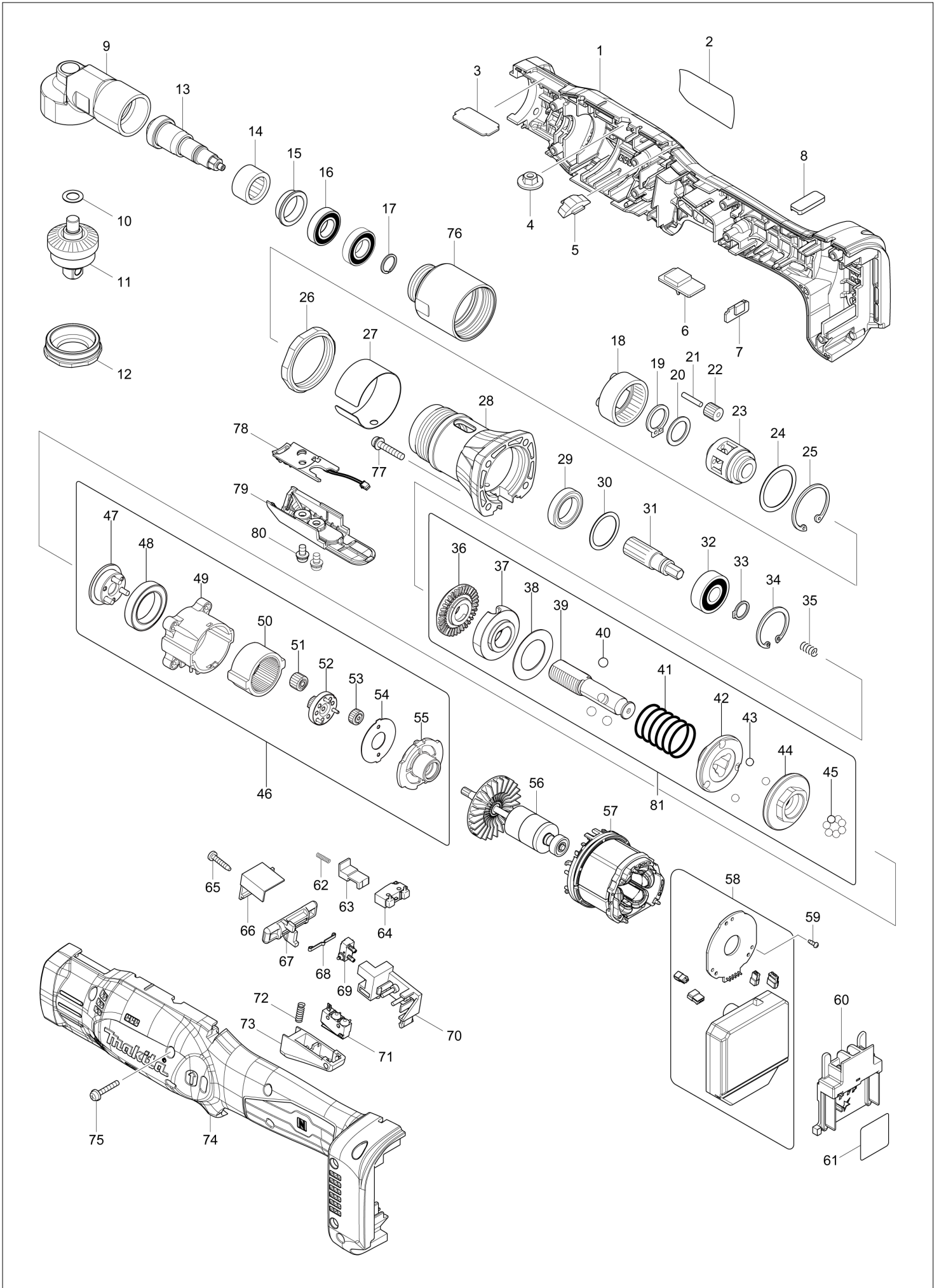
Diagram / Parts List

DFL403F

CORDLESS ANGLE SCREWDRIVER



(VN) DFL403F / CORDLESS ANGLE SCREWDRIVER



VN	VIETNAM
-----------	----------------

DFL403F / CORDLESS ANGLE SCREWDRIVER

Item	Sub	Parts No.	Parts Description	Qty	I/C	E/C No.	Close No.	Remark
001		183J44-6	HOUSING SET	1				
	C10	263005-3	RUBBER PIN 6	2				
	C20	252825-0	INSERT NUT M4-4	4				
	C30	931002-4	HEX. NUT M3	8				
	D10		INC. 74					
002		854F69-0	DFL403F NAME PLATE	1				
003		345446-6	PLATE K	1				
004		252142-8	HEX.NUT FLANGE M5	1				
005		458391-7	LENS	1				
006		620792-1	BUZZER CIRCUIT	1				
007		620793-9	USB CIRCUIT	1				
008		424827-8	USB COVER	1				
009		143716-5	ANGLE HEAD COMPLETE	1			C7605	
009-1		143716-5	ANGLE HEAD COMPLETE	1	O	C7605		
010		253777-8	FLAT WASHER 8	1				
011		143714-9	SPINDLE A COMPLETE	1				
012		285739-8	BEARING RETAINER 20-34	1				
013		221589-7	SPIRAL BEVEL GEAR 9	1				
014		212222-2	NEEDLE BEARING 1612	1				
015		326709-9	SPACER	1				
016		211288-9	BALL BEARING 6901DDW	2				
017		961082-6	RETAINING RING WR12	1				
018		227120-7	INTERNAL GEAR 50	1				
019		961054-1	RETAINING RING S-14	1				
020		253837-6	FLAT WASHER 14	1				
021		256104-8	PIN 3	5				
022		227138-8	SPUR GEAR 14	5				
023		310148-3	CARRIER	1				
024		267127-1	FLAT WASHER 26	1				
025		962161-3	RETAINING RING R-32	1				
026		252187-6	HEX. NUT M36-41	1				
027		345447-4	RING 38K	1				
028		317808-8	CLUTCH CASE	1				
029		211283-9	BALL BEARING 6803ZZ	1				
030		267283-7	FLAT WASHER 21	1				
031		227137-0	SPUR GEAR 21	1				
032		211088-7	BALL BEARING 6000DDW	1				
033		961026-6	RETAINING RING S-10	1				
034		962105-3	RETAINING RING R-26	1				
035		233019-6	COMPRESSION SPRING 5	1				
036		324834-0	LOCK NUT M12	1				
037		158408-3	ADJUST RING COMPLETE	1				
038		267276-4	FLAT WASHER 18	1				
039		327086-2	SPINDLE	1				
040		216018-3	STEEL BALL 5.0	3				
041		233357-6	COMPRESSION SPRING 19B	1				
042		223146-7	CAM D	1				
043		216024-8	STEEL BALL 4	3				
044		223187-3	CUM F	1				
045		216024-8	STEEL BALL 4	7				
046		126771-2	GEAR ASSEMBLY K	1			DB550	
	D10		INC. 47-55				DB550	
046-1		126771-2	GEAR ASSEMBLY K	1	O	DB550		
	D10		INC. 47-55			DB550		
047		144383-9	CARRIER COMPLETE D	1				
048		211375-4	BALL BEARING 6805LLB	1				
049		418004-2	GEAR CASE	1			DB550	
	C10	931102-0	HEX. NUT M4	4			DB550	
049-1		418004-2	GEAR CASE	1	O	DB550		
050		227048-9	INTERNAL GEAR 47	1				
051		221537-6	SPUR GEAR 16	3				
052		144953-4	SPUR GEAR 13 COMPLETE B	1				
053		227104-5	SPUR GEAR 15	3				
054		267774-8	LOCK WASHER	1				
055		418003-4	MOTOR BRACKET	1				

Interchange
O : Yes
X : No
< : the new part can be substituted for the current.
> : the current part can be substituted for the new.
S : Interchangeable as a set.

