



|    |         |
|----|---------|
| VN | VIETNAM |
|----|---------|

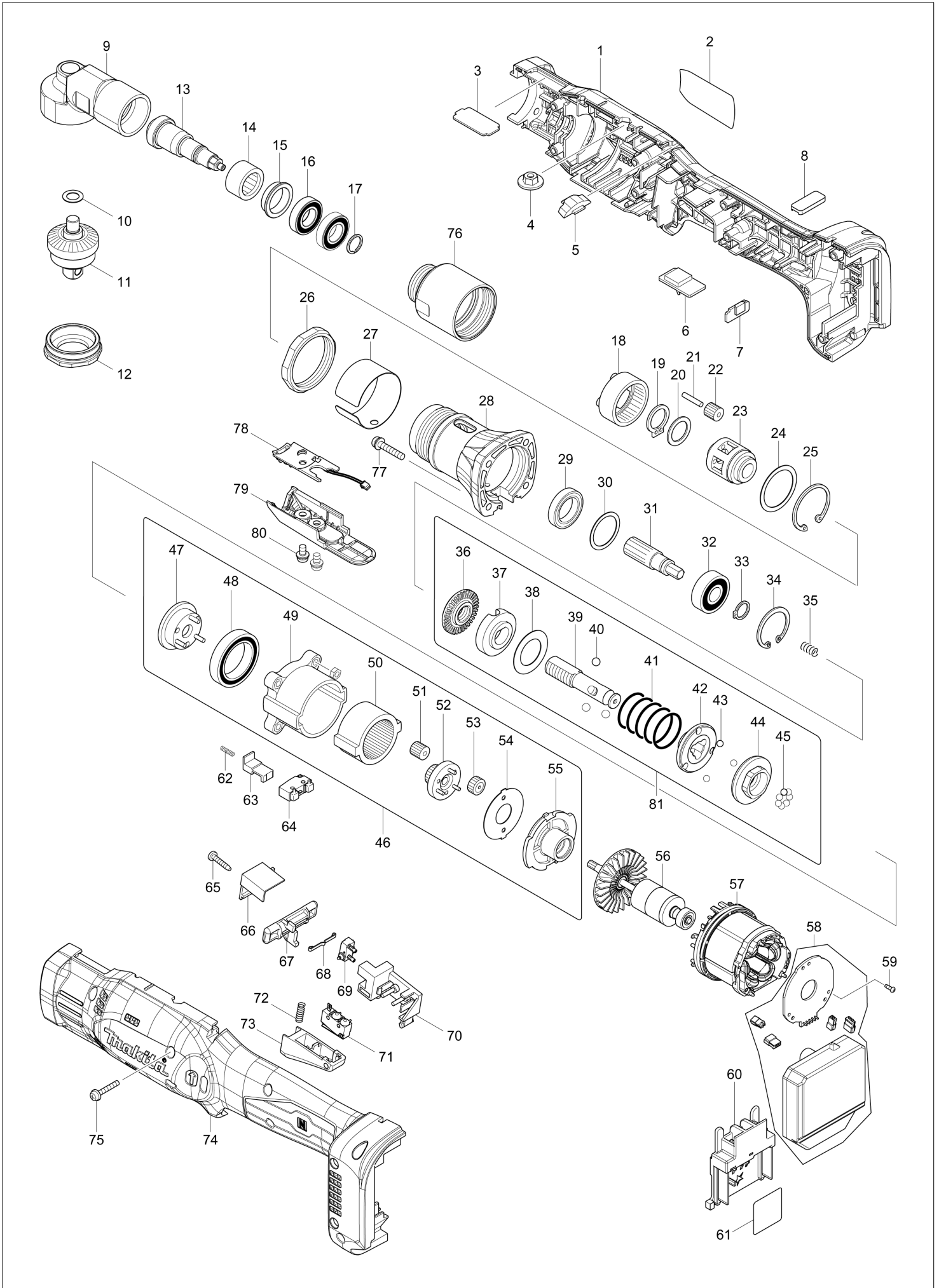
# Diagram / Parts List

**DFL302F**

**CORDLESS ANGLE SCREWDRIVER**



# (VN) DFL302F / CORDLESS ANGLE SCREWDRIVER



|           |                |
|-----------|----------------|
| <b>VN</b> | <b>VIETNAM</b> |
|-----------|----------------|

### DFL302F / CORDLESS ANGLE SCREWDRIVER

| Item  | Sub | Parts No. | Parts Description       | Qty | I/C | E/C No. | Close No. | Remark |
|-------|-----|-----------|-------------------------|-----|-----|---------|-----------|--------|
| 001   |     | 183J44-6  | HOUSING SET             | 1   |     |         |           |        |
|       | C10 | 263005-3  | RUBBER PIN 6            | 2   |     |         |           |        |
|       | C20 | 252825-0  | INSERT NUT M4-4         | 4   |     |         |           |        |
|       | C30 | 931002-4  | HEX. NUT M3             | 8   |     |         |           |        |
|       | D10 |           | INC. 74                 |     |     |         |           |        |
| 002   |     | 854F52-7  | DFL302F NAME PLATE      | 1   |     |         |           |        |
| 003   |     | 345445-8  | PLATE J                 | 1   |     |         |           |        |
| 004   |     | 252142-8  | HEX.NUT FLANGE M5       | 1   |     |         |           |        |
| 005   |     | 458391-7  | LENS                    | 1   |     |         |           |        |
| 006   |     | 620792-1  | BUZZER CIRCUIT          | 1   |     |         |           |        |
| 007   |     | 620793-9  | USB CIRCUIT             | 1   |     |         |           |        |
| 008   |     | 424827-8  | USB COVER               | 1   |     |         |           |        |
| 009   |     | 143716-5  | ANGLE HEAD COMPLETE     | 1   |     |         | C7605     |        |
| 009-1 |     | 143716-5  | ANGLE HEAD COMPLETE     | 1   | O   | C7605   |           |        |
| 010   |     | 253777-8  | FLAT WASHER 8           | 1   |     |         |           |        |
| 011   |     | 143714-9  | SPINDLE A COMPLETE      | 1   |     |         |           |        |
| 012   |     | 285739-8  | BEARING RETAINER 20-34  | 1   |     |         |           |        |
| 013   |     | 221589-7  | SPIRAL BEVEL GEAR 9     | 1   |     |         |           |        |
| 014   |     | 212222-2  | NEEDLE BEARING 1612     | 1   |     |         |           |        |
| 015   |     | 326709-9  | SPACER                  | 1   |     |         |           |        |
| 016   |     | 211288-9  | BALL BEARING 6901DDW    | 2   |     |         |           |        |
| 017   |     | 961082-6  | RETAINING RING WR12     | 1   |     |         |           |        |
| 018   |     | 227120-7  | INTERNAL GEAR 50        | 1   |     |         |           |        |
| 019   |     | 961054-1  | RETAINING RING S-14     | 1   |     |         |           |        |
| 020   |     | 253837-6  | FLAT WASHER 14          | 1   |     |         |           |        |
| 021   |     | 256104-8  | PIN 3                   | 5   |     |         |           |        |
| 022   |     | 227138-8  | SPUR GEAR 14            | 5   |     |         |           |        |
| 023   |     | 310148-3  | CARRIER                 | 1   |     |         |           |        |
| 024   |     | 267127-1  | FLAT WASHER 26          | 1   |     |         |           |        |
| 025   |     | 962161-3  | RETAINING RING R-32     | 1   |     |         |           |        |
| 026   |     | 252187-6  | HEX. NUT M36-41         | 1   |     |         |           |        |
| 027   |     | 345448-2  | RING 38L                | 1   |     |         |           |        |
| 028   |     | 317808-8  | CLUTCH CASE             | 1   |     |         |           |        |
| 029   |     | 211283-9  | BALL BEARING 6803ZZ     | 1   |     |         |           |        |
| 030   |     | 267283-7  | FLAT WASHER 21          | 1   |     |         |           |        |
| 031   |     | 227137-0  | SPUR GEAR 21            | 1   |     |         |           |        |
| 032   |     | 211088-7  | BALL BEARING 6000DDW    | 1   |     |         |           |        |
| 033   |     | 961026-6  | RETAINING RING S-10     | 1   |     |         |           |        |
| 034   |     | 962105-3  | RETAINING RING R-26     | 1   |     |         |           |        |
| 035   |     | 233019-6  | COMPRESSION SPRING 5    | 1   |     |         |           |        |
| 036   |     | 324834-0  | LOCK NUT M12            | 1   |     |         |           |        |
| 037   |     | 158408-3  | ADJUST RING COMPLETE    | 1   |     |         |           |        |
| 038   |     | 267276-4  | FLAT WASHER 18          | 1   |     |         |           |        |
| 039   |     | 327086-2  | SPINDLE                 | 1   |     |         |           |        |
| 040   |     | 216018-3  | STEEL BALL 5.0          | 3   |     |         |           |        |
| 041   |     | 233417-4  | COMPRESSION SPRING 19F  | 1   |     |         |           |        |
| 042   |     | 223146-7  | CAM D                   | 1   |     |         |           |        |
| 043   |     | 216024-8  | STEEL BALL 4            | 3   |     |         |           |        |
| 044   |     | 223187-3  | CUM F                   | 1   |     |         |           |        |
| 045   |     | 216024-8  | STEEL BALL 4            | 7   |     |         |           |        |
| 046   |     | 125231-1  | GEAR ASS'Y E            | 1   |     |         | DB550     |        |
|       | D10 |           | INC. 47-55              |     |     |         | DB550     |        |
| 046-1 |     | 125231-1  | GEAR ASS'Y E            | 1   | O   | DB550   |           |        |
|       | D10 |           | INC. 47-55              |     |     | DB550   |           |        |
| 047   |     | 153443-6  | CARRIER COMPLETE A      | 1   |     |         |           |        |
| 048   |     | 211375-4  | BALL BEARING 6805LLB    | 1   |     |         |           |        |
| 049   |     | 418004-2  | GEAR CASE               | 1   |     |         | DB550     |        |
|       | C10 | 931102-0  | HEX. NUT M4             | 4   |     |         | DB550     |        |
| 049-1 |     | 418004-2  | GEAR CASE               | 1   | O   | DB550   |           |        |
| 050   |     | 227048-9  | INTERNAL GEAR 47        | 1   |     |         |           |        |
| 051   |     | 227050-2  | SPUR GEAR 13            | 3   |     |         |           |        |
| 052   |     | 153684-4  | SPUR GEAR 20 COMPLETE C | 1   |     |         |           |        |
| 053   |     | 227104-5  | SPUR GEAR 15            | 3   |     |         |           |        |
| 054   |     | 267774-8  | LOCK WASHER             | 1   |     |         |           |        |
| 055   |     | 418003-4  | MOTOR BRACKET           | 1   |     |         |           |        |

Interchange  
O : Yes  
X : No  
< : the new part can be substituted for the current.  
> : the current part can be substituted for the new.  
S : Interchangeable as a set.

