



VN	VIETNAM
----	---------

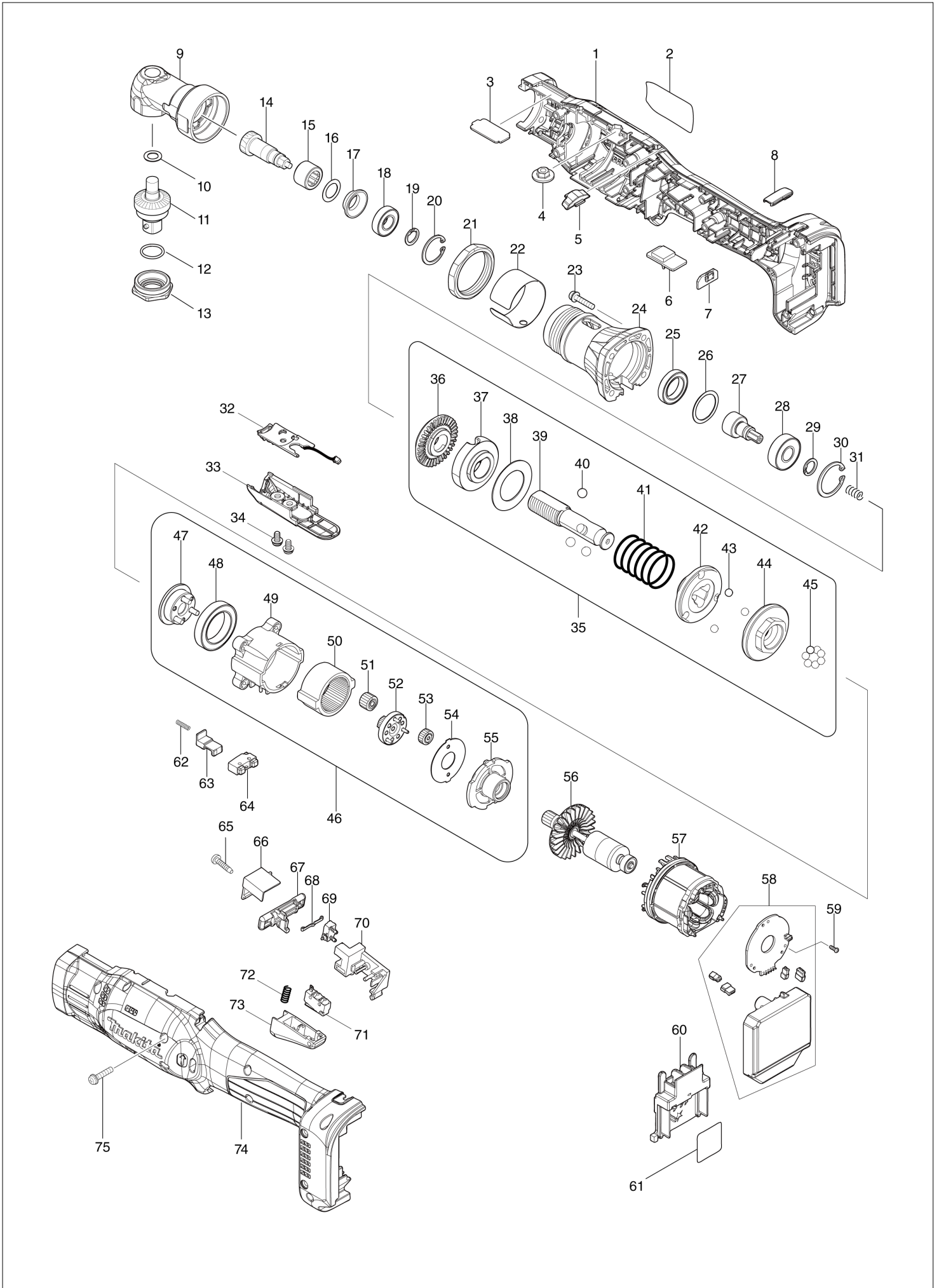
# Diagram / Parts List

**DFL125F**

**CORDLESS ANGLE SCREWDRIVER**



# (VN) DFL125F / CORDLESS ANGLE SCREWDRIVER



<b>VN</b>	<b>VIETNAM</b>
-----------	----------------

### DFL125F / CORDLESS ANGLE SCREWDRIVER

Item	Sub	Parts No.	Parts Description	Qty	I/C	E/C No.	Close No.	Remark
001		183J44-6	HOUSING SET	1				
	C10	263005-3	RUBBER PIN 6	2				
	C20	252825-0	INSERT NUT M4-4	4				
	C30	931002-4	HEX. NUT M3	8				
	D10		INC. 74					
002		854F17-9	DFL125F NAME PLATE	1				
003		345283-8	PLATE B	1				
004		252142-8	HEX.NUT FLANGE M5	1				
005		458391-7	LENS	1				
006		620792-1	BUZZER CIRCUIT	1				
007		620793-9	USB CIRCUIT	1				
008		424827-8	USB COVER	1				
009		144970-4	ANGLE HEAD COMPLETE	1				
010		253777-8	FLAT WASHER 8	1				
011		154447-1	SPINDLE A COMPLETE	1				
012		213222-5	O RING 15	1				
013		285722-5	BEARING RETAINER 15-26	1				
014		227478-4	SPIRAL BEVEL GEAR 9	1				
015		212122-6	NEEDLE BEARING 1212	1				
016		253312-2	THIN WASHER 12	1				
017		345281-2	SPACER	1				
018		210057-5	BALL BEARING 6900LLB	1				
019		961026-6	RETAINING RING S-10	1				
020		962102-9	RETAINING RING R-22	1				
021		252187-6	HEX. NUT M36-41	1				
022		347267-2	RING 38T	1				
023		265145-3	+ PAN HEAD SCREW M4X22	4				
024		317808-8	CLUTCH CASE	1				
025		211283-9	BALL BEARING 6803ZZ	1				
026		267283-7	FLAT WASHER 21	1				
027		326992-8	SPINDLE B	1				
028		211088-7	BALL BEARING 6000DDW	1				
029		961026-6	RETAINING RING S-10	1				
030		962105-3	RETAINING RING R-26	1				
031		233019-6	COMPRESSION SPRING 5	1				
032		620396-9	LED CIRCUIT	1				
033		457976-6	SWITCH COVER	1				
034		265171-2	PAN HEAD SCREW M4X8	2				
035		126789-3	CLUTCH ASSEMBLY R	1				
	D10		INC. 36-45					
036		324834-0	LOCK NUT M12	1				
037		158408-3	ADJUST RING COMPLETE	1				
038		267276-4	FLAT WASHER 18	1				
039		327086-2	SPINDLE	1				
040		216018-3	STEEL BALL 5.0	3				
041		233357-6	COMPRESSION SPRING 19B	1				
042		223146-7	CAM D	1				
043		216024-8	STEEL BALL 4	3				
044		223187-3	CUM F	1				
045		216024-8	STEEL BALL 4	7				
046		126771-2	GEAR ASSEMBLY K	1				DB550
	D10		INC. 47-55					DB550
046-1		126771-2	GEAR ASSEMBLY K	1	O	DB550		
	D10		INC. 47-55			DB550		
047		144383-9	CARRIER COMPLETE D	1				
048		211375-4	BALL BEARING 6805LLB	1				
049		418004-2	GEAR CASE	1				DB550
	C10	931102-0	HEX. NUT M4	4				DB550
049-1		418004-2	GEAR CASE	1	O	DB550		
050		227048-9	INTERNAL GEAR 47	1				
051		221537-6	SPUR GEAR 16	3				
052		144953-4	SPUR GEAR 13 COMPLETE B	1				
053		227104-5	SPUR GEAR 15	3				
054		267774-8	LOCK WASHER	1				
055		418003-4	MOTOR BRACKET	1				

Interchange  
O : Yes  
X : No  
< : the new part can be substituted for the current.  
> : the current part can be substituted for the new.  
S : Interchangeable as a set.

