



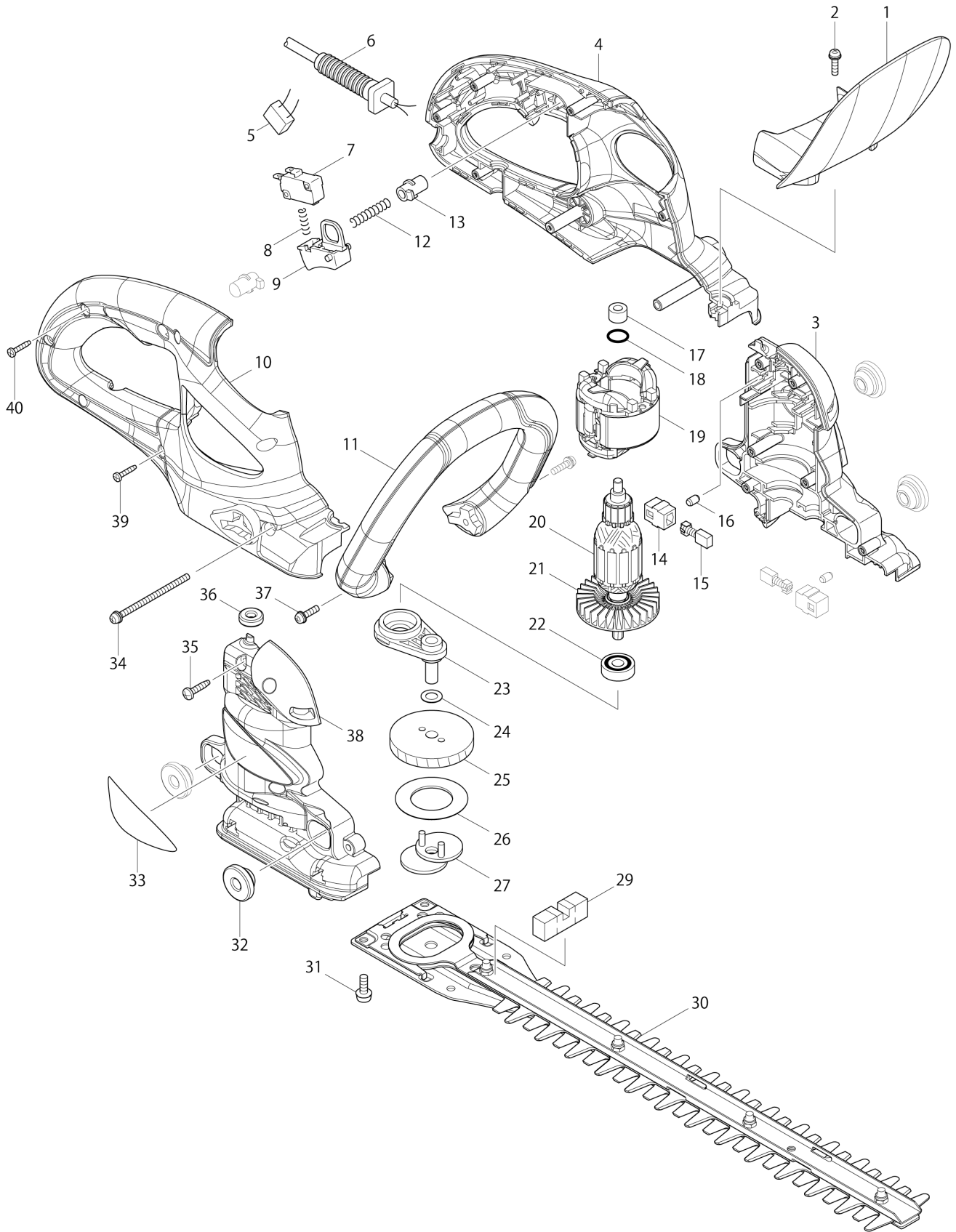
VN	VIETNAM
----	---------

# Diagram / Parts List

**MUH355**

**HEDGE TRIMMER 350MM**

(VN) MUH355 / HEDGE TRIMMER 350MM



**VN VIETNAM****MUH355 / HEDGE TRIMMER 350MM**

Item	Sub	Parts No.	Parts Description	Qty	I/C	E/C No.	Close No.	Remark
001		451067-5	PROTECTOR	1				
002		911128-8	P.H.SCREW M4X16 WITH WR	1				
003		188634-0	MOTOR HOUSING SET	1				
	D10		INC. 38					
004		188636-6	HANDLE SET	1			92980	
	D10		INC. 10				92980	
004-1		187246-6	HANDLE SET	1	S	92980		
	D10		INC. 10			92980		
006		668140-6	POWER SUPPLY CORD 0.75-2-0.3	1				
007		650593-3	SWITCH	1				
008		231473-8	COMPRESSION SPRING 4	1				
009		154950-2	SWITCH LEVER COMPLETE	1				
010		188636-6	HANDLE SET	1			92980	
	D10		INC. 4				92980	
010-1		187246-6	HANDLE SET	1	S	92980		
	D10		INC. 4			92980		
011		451065-9	GRIP 25	1				
012		233092-6	COMPRESSION SPRING 5	1				
013		418881-2	LOCK ON BUTTON	2				
014		643562-1	BRUSH HOLDER 5X8	2			85259	
014-1		643552-4	BRUSH HOLDER 5-8	2	O	85259		
015		B-80195	CARBON BRUSH CB-64A	1			85070	
015-1		B-80254	CARBON BRUSH SET CB-64A	1	<	85070		
016		263002-9	RUBBER PIN 4	2				
017		214014-5	PLANE BEARING 6	1				
018		213105-9	O RING 11	1				
019		593698-5	FIELD ASSY 220V	1				
	C10	654001-6	TERMINAL R1.25-3.5	2				
020		515768-0	ARMATURE ASSY 220V	1				
	D10		INC. 21,22					
021		240115-3	FAN 55	1				
022		210007-0	BALL BEARING 608VV	1				
023		154629-5	BEARING BOX COMPLETE	1				
024		253835-0	FLAT WASHER 8	1				
025		226606-8	HELICAL GEAR 49	1				
026		267404-1	FLAT WASHER 28	1				
027		165192-3	CRANK	1			98106	
027-1		165734-3	CRANK	1	<	98106		
029		423342-9	SPONGE SEAL	1				
030		A-49915	350MM SHEAR BLADE	1				
	C10	252180-0	HEX. LOCK NUT M5-8	4				
	C20	257672-4	SLEEVE 5	4				
	C30	265193-2	+ TRUSS HEAD SCREW M5X14	4				
	C40	188369-3	OIL VESSEL SET	1				
031		265074-0	PAN HEAD SCREW M5X16	4			A8703	
031-1		265A01-3	PAN HEAD SCREW M5X16	4	<	A8703		
032		424194-1	RUBBER RING 8	4				
033		867424-1	MUH355 NAME PLATE	1				
034		911193-7	PAN HEAD SCREW M4X65	1				
035		266326-2	TAPPING SCREW 4X18	6				
036		424195-9	RUBBER RING 6	1				
037		911128-8	P.H.SCREW M4X16 WITH WR	2			92980	
037-1		911138-5	PAN HEAD SCREW M4X20	2	S	92980		
038		188634-0	MOTOR HOUSING SET	1				
	D10		INC. 3					
039		266429-2	TAPPING SCREW 3X16	1				
040		266429-2	TAPPING SCREW 3X16	5				
A01		418257-3	BLADE COVER	1				
A02		158024-1	HOOK COMPLETE	1				
A03		661905-5	EXTENSION CORD 0.75-2-10.0	1				
A04		154511-8	CORD HOLDER COMPLETE	1				

Interchange  
O : Yes  
X : No  
< : the new part can be substituted for the current.  
> : the current part can be substituted for the new.  
S : Interchangeable as a set.