



VN	VIETNAM
----	---------

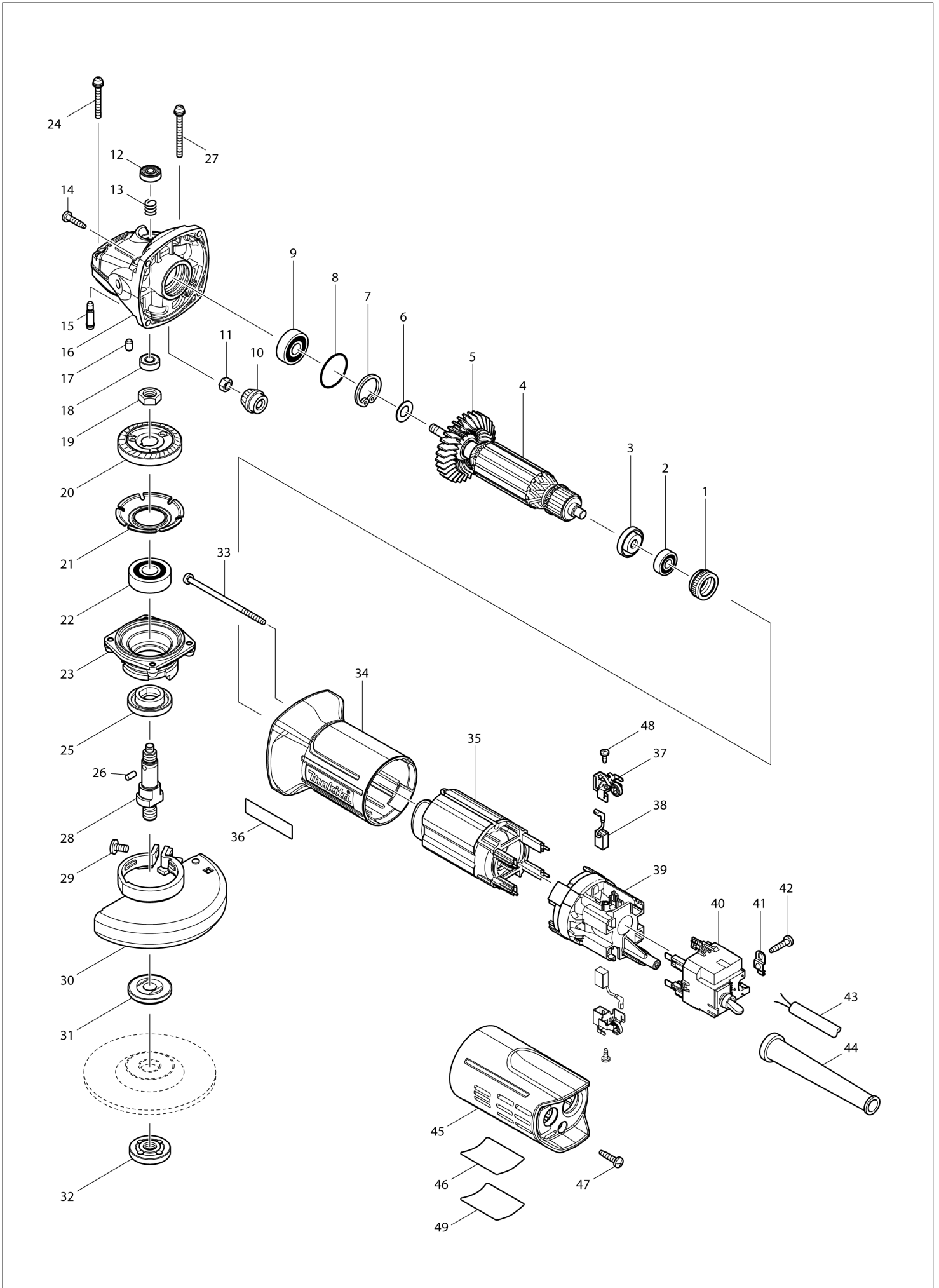
# Diagram / Parts List

**MT960**

**ANGLE GRINDER 100MM**



# (VN) MT960 / ANGLE GRINDER 100MM



<b>VN</b>	<b>VIETNAM</b>
-----------	----------------

### MT960 / ANGLE GRINDER 100MM

Item	Sub	Parts No.	Parts Description	Qty	I/C	E/C No.	Close No.	Remark
001		421868-5	LABYRINTH RUBBER RING 19	1				
002		210062-2	BALL BEARING 607ZZ	1				
003		681636-0	INSULATION WASHER	1				
004		510141-9	ARMATURE ASS'Y 220V	1				
	D10		INC. 2,3,5					
005		240107-2	FAN 56	1			97304	
005-1		240139-9	FAN 56	1	O	97304		
006		267385-9	FLAT WASHER 9	1				
007		962105-3	RETAINING RING R-26	1				
008		213445-5	O-RING 26	1				
009		210084-2	BALL BEARING 629ZZ	1				
010		227547-1	SPIRAL BEVEL GEAR 11	1				
011		252174-5	HEX. NUT M6	1				
012		419589-1	CAP	1				
013		234057-1	COMPRESSION SPRING 8	1				
014		266326-2	TAPPING SCREW 4X18	4				
015		268228-8	SHOULDER PIN 5	1				
016		318340-5	GEAR HOUSING	1				
017		263002-9	RUBBER PIN 4	1				
018		210033-9	BALL BEARING 696ZZ	1				
019		252172-9	HEX. NUT M10	1				
020		227548-9	SPIRAL BEVEL GEAR 36	1				
021		346005-9	BEARING RETAINER	1				
022		211145-1	BALL BEARING 6201ZZ	1				
023		318339-0	BEARING BOX	1				
024		911158-9	PAN HEAD SCREW M4X30	2				
025		450811-7	LABYRINTH RING	1				
026		256251-5	PIN 4	1				
027		911168-6	PAN HEAD SCREW M4X40	2				
028		324959-0	SPINDLE	1				
029		265180-1	PAN HEAD SCREW M5X16	1				
030		135238-9	WHEEL COVER 100K ASS'Y	1			85994	
	D10		INC. 29				85994	
030-1		122885-5	WHEEL COVER 100K ASS'Y	1	<	85994	A0106	
	C10	213009-5	O RING 4	1		85994	A0106	
	D10		INC. 29			85994	A0106	
030-2		125885-4	WHEEL COVER 100AK ASS'Y	1	<	A0106		
	C10	213009-5	O RING 4	1		A0106		
	D10		INC. 29			A0106		
031		224380-2	INNER FLANGE 30	1			86248	
031-1		224314-5	INNER FLANGE 30	1	O	86248		
032		224559-5	LOCK NUT 10-30	1				
033		266345-8	TAPPING SCREW 4X80	2				
034		188640-5	MOTOR HOUSING SET	1				
	D10		INC. 36					
035		623528-7	FIELD 220-240V	1				
036		819126-5	MAKTEC LOGO LABEL	1				
037		643839-4	BRUSH HOLDER 6X9	2				
038		194722-3	CARBON BRUSH CB-459	1			85070	
038-1		195026-6	CARBON BRUSH SET CB-459	1	<	85070		
039		450814-1	REAR HOUSING	1				
040		638630-3	SWITCH UNIT	1				
	C10	651426-5	SWITCH STL115ADF-AD	1				
041		687681-3	STRAIN RELIEF	1				
042		266326-2	TAPPING SCREW 4X18	1				
043		691284-7	POWER SUPPLY CORD 0.75-2-2.0	1				
044		682569-2	CORD GUARD 8-85	1				
045		450812-5	REAR COVER	1				
046		866108-8	MT960 NAME PLATE	1				
047		266326-2	TAPPING SCREW 4X18	1				
048		266492-5	TAPPING SCREW 3X8	2				
049		819332-2	CLEAR LABEL	1			90134	
049-1		893040-3	CLEAR LABEL	1	<	90134		
050		267256-0	FLAT WASHER 10	1		99066		
A01		782420-7	LOCK NUT WRENCH 20	1				

Interchange  
O : Yes  
X : No  
< : the new part can be substituted for the current.  
> : the current part can be substituted for the new.  
S : Interchangeable as a set.