



VN	VIETNAM
----	---------

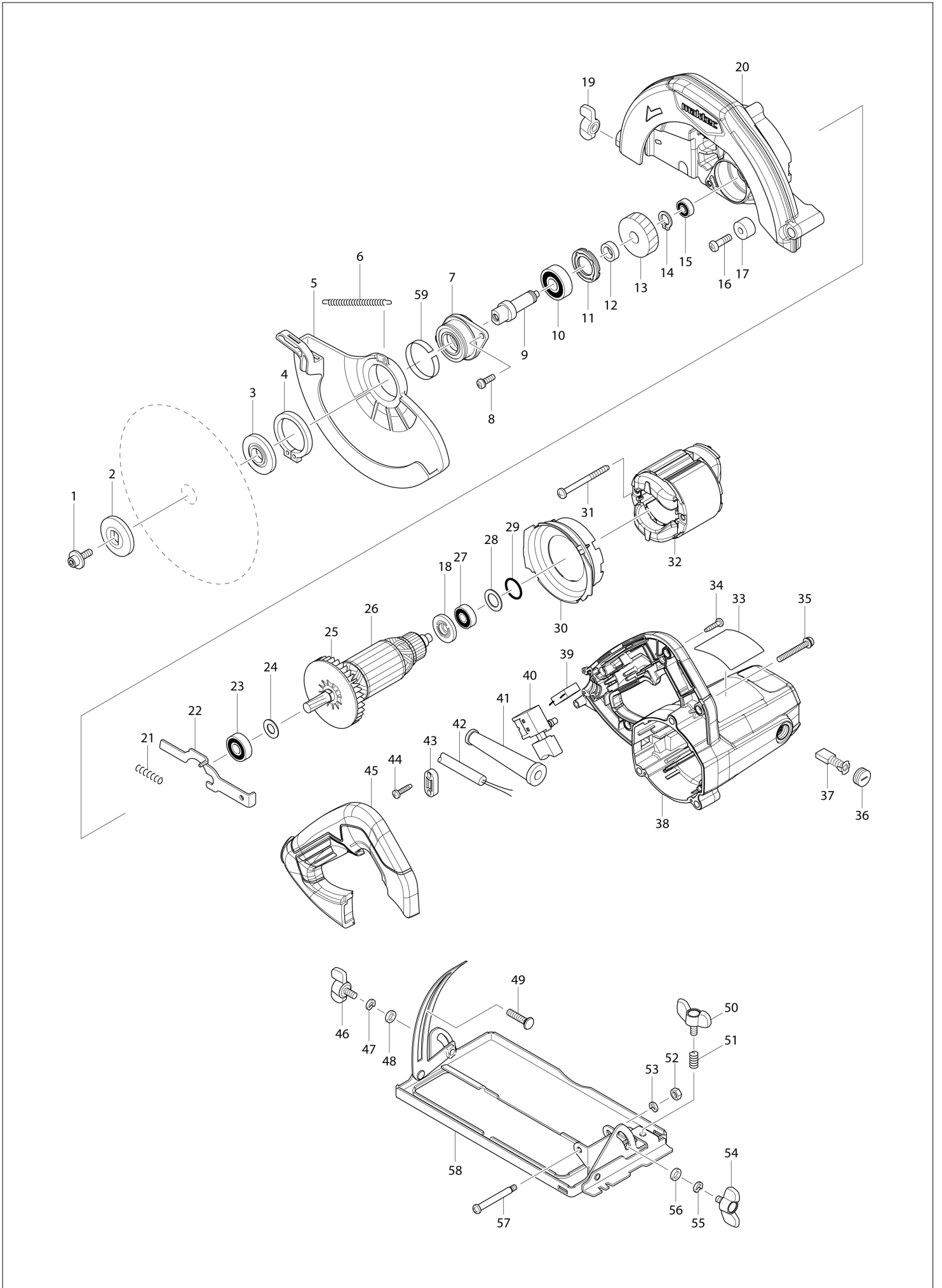
Diagram / Parts List

MT583

185MM CIRCULAR SAW



(VN) MT583 / 185MM CIRCULAR SAW



VN	VIETNAM
-----------	----------------

MT583 / 185MM CIRCULAR SAW

Item	Sub	Parts No.	Parts Description	Qty	I/C	E/C No.	Close No.	Remark
001		266819-9	HEX.SOKCET HEAD BOLT M6X20	1				
002		224387-8	OUTER FLANGE 40	1				
003		224386-0	INNER FLANGE 40	1				
004		961155-5	RETAINING RING S-38	1				
005		418150-1	SAFETY COVER	1				
006		231833-4	TENSION SPRING 3	1				
007		318880-3	BEARING BOX	1				
008		265120-9	PAN HEAD SCREW M5X16	2				
009		324320-1	SPINDLE	1				
010		211477-6	BALL BEARING 6201ZZ	1				
011		285852-2	BEARING RETAINER 19-33	1				
012		257173-2	RING 12	1				
013		227768-5	HELICAL GEAR 38	1				
014		961052-5	RETAINING RING S-12	1				
015		210137-7	BALL BEARING 606ZZ	1				
016		265117-8	+PAN HEAD SCREW M6X20	1				
017		262556-3	RUBBER SLEEVE 6	1				
018		681644-1	INSULATION WASHER	1				
019		252649-4	THUMB NUT M6	1				
020		141720-8	BLADE CASE COMPLETE	1				
	C10	213445-5	O-RING 26	1				
021		233117-6	COMPRESSION SPRING 6	1				
022		345317-7	SHAFT LOCK	1				
023		210067-2	BALL BEARING 6000ZZ	1			C7958	
023-1		210199-5	BALL BEARING 6000ZZ	1	O	C7958		
024		267256-0	FLAT WASHER 10	1				
025		240064-4	FAN 70	1			DC403	
025-1		240064-4	FAN 70	1	O	DC403		
026		513863-0	ARMATURE ASS'Y 220V	1			C7958	
	D10		INC. 18,23-25,27				C7958	
026-1		510423-9	ARMATURE ASS'Y 220V	1	O	C7958		
	D10		INC. 18,23-25,27			C7958		
027		210046-0	BALL BEARING 608ZZ	1				
028		267255-2	FLAT WASHER 14	1				
029		213279-6	O RING 18	1				
030		452092-9	BAFFLE PLATE	1				
031		266329-6	TAPPING SCREW 5X60	2				
032		594608-5	FIELD ASS'Y 220V	1			A8421	
	C10	654220-4	RING TERMINAL	2			A8421	
	C20	654501-6	CONNECTOR P-1.25	2			A8421	
032-1		593863-6	FIELD ASS'Y 220V	1	O	A8421	Z33149	
	C10	654220-4	RING TERMINAL	2		A8421	Z33149	
	C20	654501-6	CONNECTOR P-1.25	2		A8421	Z33149	
032-2		590067-1	FIELD ASSY 220V	1	O	Z33149		
	C10	654020-2	RING TERMINAL	2		Z33149		
	C20	654501-6	CONNECTOR P-1.25	2		Z33149		
033		814F80-4	MT583 NAME PLATE	1				
034		266326-2	TAPPING SCREW 4X18	4			C0991	
034-1		265652-6	TAPPING SCREW 4X18	4	O	C0991		
035		265104-7	PAN HEAD SCREW M5X40	3				
036		644500-6	HOLDER CAP 7X11	2			99147	
036-1		643750-0	BRUSH HOLDER CAP 7-11	2	<	99147	99815	
036-2		644500-6	HOLDER CAP 7X11	2	O	99815	Z33149	
036-3		643003-7	HOLDER CAP 7X11	2	O	Z33149	Y07775	
036-4		644500-6	HOLDER CAP 7X11	2	O	Y07775	D0610	
036-5		643750-0	BRUSH HOLDER CAP 7-11	2	O	D0610		
037		B-80379	CARBON BRUSH SET CB-303A	1				
038		141717-7	MOTOR HOUSING COMPLETE	1				
	C10	644501-4	BRUSH HOLDER 5X11	2			99147	
	C11	643708-9	BRUSH HOLDER 5-11	2	<	99147	99815	
	C12	644501-4	BRUSH HOLDER 5X11	2	O	99815		
040		650246-4	SWITCH TN14-3-C01-1	1				
041		682574-9	CORD GUARD 10-90	1				
042		691780-5	POWER SUPPLY CORD 0.75-2-2.0	1			Y08439	
042-1		691780-5	POWER SUPPLY CORD 0.75-2-2.0	1	O	Y08439		

Interchange
O : Yes
X : No
< : the new part can be substituted for the current.
> : the current part can be substituted for the new.
S : Interchangeable as a set.

