



VN	VIETNAM
----	---------

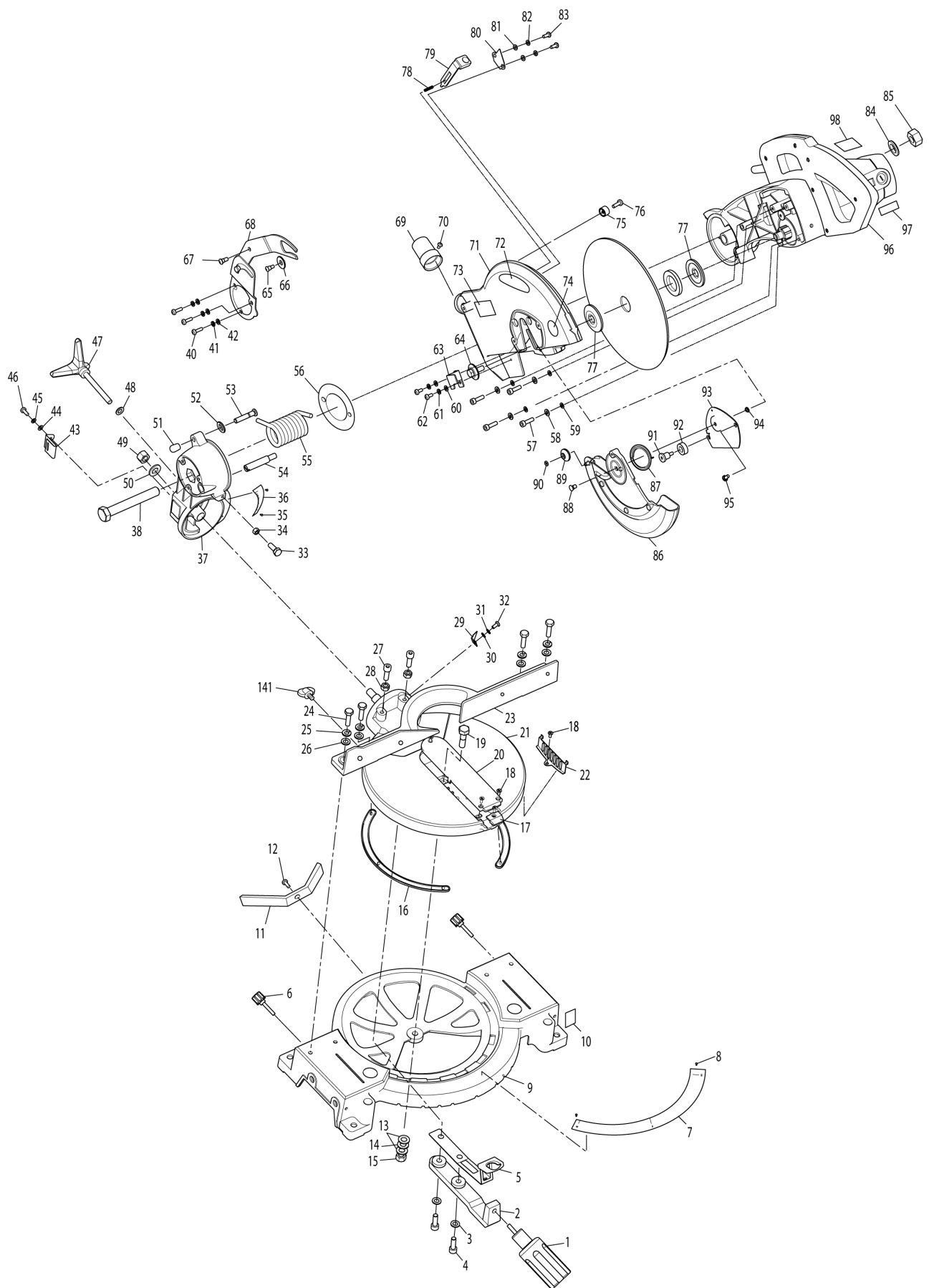
# Diagram / Parts List

**MT230**

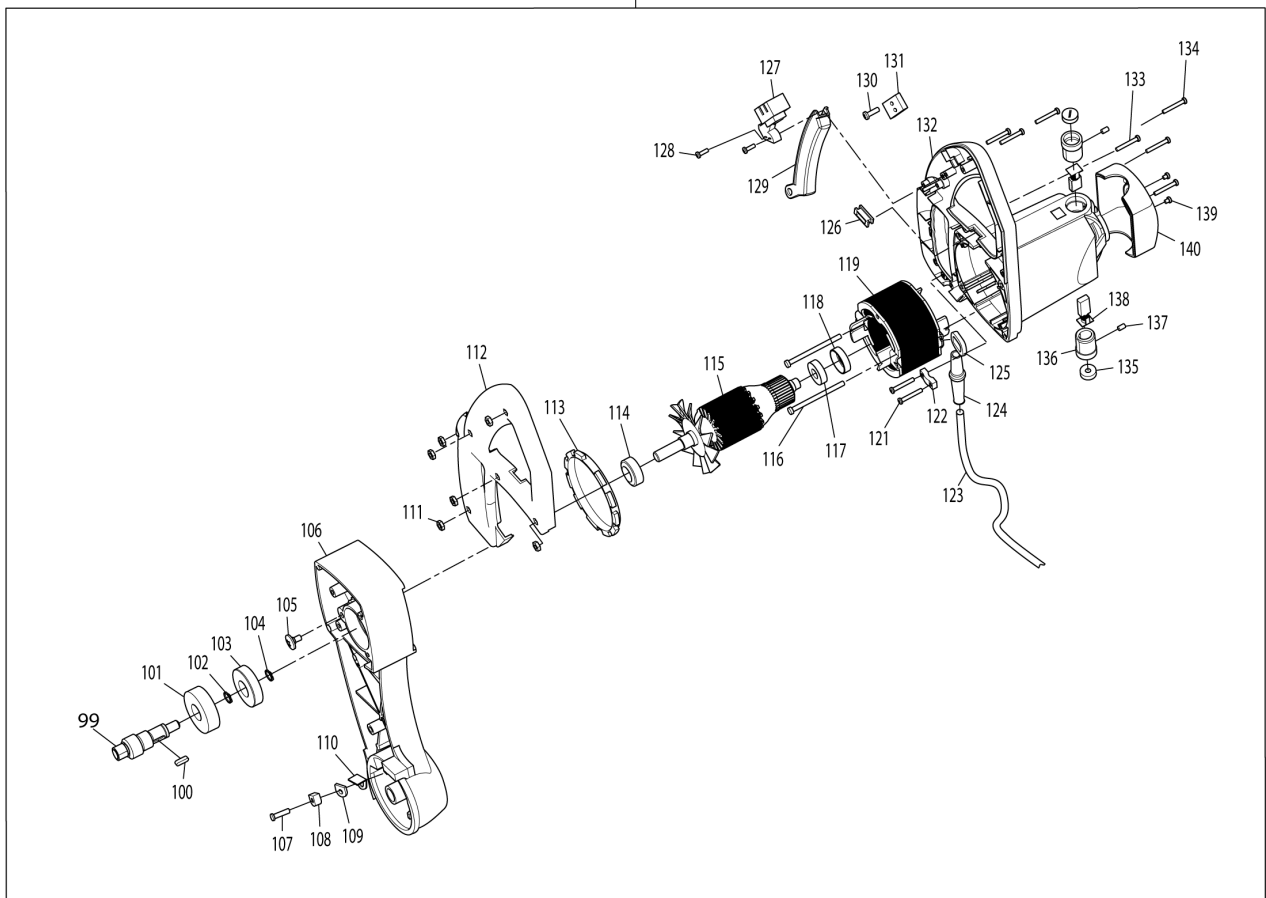
**MITER SAW**



(VN) MT230 / MITER SAW



96



<b>VN</b>	<b>VIETNAM</b>
-----------	----------------

### MT230 / MITER SAW

Item	Sub	Parts No.	Parts Description	Qty	I/C	E/C No.	Close No.	Remark
001		JM23000001	GRIP	1				
002		JM23000002	HANDLE BRACKET	1				
003		JM23000003	SPRING WASHER8	2				
004		JM23000004	HEX SOCKET HEAD BOLT M8X25	2			Y08247	
004-1		JM00000207	HEX SOCKET HEAD BOLT M8X30	1	<	Y08247		
005		JM23000005	KNOCK SPRING	1			Y06553	
005-1		JM23000200	KNOCK SPRING SET	1	<	Y06553		
	D10		INC. 152,153			Y06553		
006		JM23000006	LOCK KNOB FOR EXT.WINGS	2				
007		JM23000007	MITER ANGLE LABEL	1			Y08281	
008		JM23000008	RIVET	2			Y08281	
009		JM23000009	BASE COMP	1			Y08281	
	D10		INC. 7,8,10				Y08281	
009-1		JM00000066	BASE COMP	1	O	Y08281		
	D10		INC. 10,177			Y08281	Y08723	
	D11		INC. 177			Y08723		
010		810965-6	CAUTION LABEL	1			Y08723	
011		JM23000011	BASE SUPPORTER	1				
012		JM23000012	SCREW	1				
013		JM23000013	FLAT WASHER10	2			Y08247	
013-1		JM23000013	FLAT WASHER10	1	O	Y08247		
014		JM23000014	WAVE WASHER 6	1				
015		JM23000015	ANTI-LOOSE NUTM10	1				
016		JM23000016	SLIDE PLATE	2				
017		JM23000017	MITER ANGLE POINTER	1				
018		JM23000018	COUNTERSUNK HEAD SCREW M4X10	5			Y08247	
018-1		JM23000018	COUNTERSUNK HEAD SCREW M4X10	3	O	Y08247		
019		JM23000019	PIVOT	1				
020		JM23000020	KERF BOARD RED	1			Y08723	
020-1		JM23000020	KERF BOARD RED	1	O	Y08723		
021		JM23000021	TURN BASE COMP.	1				
022		JM23000022	PROTECTION NET	1				
023		JM23000023	GUIDE RULE	1			Y08248	
023-1		JM23000204	GUIDE RULE	1	X	Y08248	Y08313	
023-2		JM23000023	GUIDE RULE	1	X	Y08313		
024		JM23000024	HEX.BOLT M8X30	4				
025		JM23000003	SPRING WASHER8	4				
026		JM23000026	FLAT WASHER8	4				
027		JM23000027	HEX. BOLT M8 X 20	2			Y08248	
027-1		JM23000024	HEX.BOLT M8X30	2	X	Y08248		
028		JM23000028	HEX. NUT M8	2				
029		JM23000029	BEVEL POINTER	1				
030		JM23000030	FLAT WASHER5	1				
031		JM23000031	SPRING WASHER5	1			Y08248	
032		JM23000032	PAN HEAD SCREW M5 X 10	1				
033		JM23000033	HEX. BOLT M8X16	1				
034		JM23000028	HEX. NUT M8	1				
035		JM23000034	RIVET	2			Y08281	
036		JM23000035	SCALE LABEL	1			Y08281	
037		JM23000036	ARM COMPLETE	1				
	D10		INC. 35,36				Y08281	
038		JM23000037	SHAFT	1				
039		JM23000038	LINK SUPPORT PLATE	1			Y05839	
039-1		JM23000038	LINK SUPPORT PLATE	1		Y08249		
040		JM23000039	PAN HEAD SCREW M6 X 16	3				
041		JM23000040	SPRING WASHER6	3				
042		JM23000041	FLAT WASHER6	3				
043		JM23000042	CLIP	1				
044		JM23000030	FLAT WASHER5	1				
045		JM23000031	SPRING WASHER5	1				
046		JM23000032	PAN HEAD SCREW M5 X 10	1				
047		JM23000043	KNOB BOLT M10 RED	1			Y08723	
047-1		JM23000043	KNOB BOLT M10 RED	1	O	Y08723		
048		JM23000013	FLAT WASHER10	1				
049		JM23000044	ANTI-LOOSE NUTM12	1				

Interchange  
O : Yes  
X : No  
< : the new part can be substituted for the current.  
> : the current part can be substituted for the new.  
S : Interchangeable as a set.

<b>VN</b>	<b>VIETNAM</b>
-----------	----------------

### MT230 / MITER SAW

Item	Sub	Parts No.	Parts Description	Qty	I/C	E/C No.	Close No.	Remark
050		JM23000045	FLAT WASHER12	1				
051		JM23000046	LOCK PIN CAP	1				
052		JM23000047	O RING	1				
053		JM23000048	PIN	1				
054		JM23000049	LIMIT PIN	1				
055		JM23000050	TORSIONAL SPRING	1				
056		JM23000051	RING	1				
057		JM23000052	HEX. SOCKET HEAD BOLT M6 X 20	4				
058		JM23000040	SPRING WASHER6	4				
059		JM23000041	FLAT WASHER6	4				
060		JM23000030	FLAT WASHER5	2				
061		JM23000031	SPRING WASHER5	2				
062		JM23000032	PAN HEAD SCREW M5 X 10	2			Y08249	
062-1		JM23000069	PAN HEAD SCREW M5X12	2	X	Y08249		
063		JM23000053	PLATE	1				
064		JM23000054	BLADE LOCK BOLT M8X20(LH)	1			Y08723	
064-1		JM23000054	BLADE LOCK BOLT M8X20(LH)	1	O	Y08723		
065		JM23000055	STEPPED BOLT M5	1				
066		JM23000056	BUSH	1				
067		JM23000057	STEPPED BOLT M6	1				
068		JM23000058	LINK COMP.	1				
069		JM23000059	DUST NOZZLE	1			Y05117	
069-1		JM23000178	DUST NOZZLE 38	1	<	Y05117	Y08313	
069-2		JM23000059	DUST NOZZLE	1	O	Y08313	Y08723	
069-3		JM23000178	DUST NOZZLE 38	1	O	Y08723		
070		JM23000060	PAN HEAD SCREW M4	1			Y05117	
070-1		JM23000060	PAN HEAD SCREW M4	2	O	Y05117	Y08249	
070-2		JM23000138	PAN HEAD SCREW M4X10	2	X	Y08249		
071		JM23000061	BLADE CASE COMP	1			Y05117	
	D10		INC. 72-74				Y05117	
071-1		JM23000179	BLADE CASE COMP	1	O	Y05117	Y08248	
	D10		INC. 72-74			Y05117	Y08248	
071-2		JM00000065	BLADE CASE COMPLETE	1	X	Y08248		
072		JM23080001	MAKTEC LABEL	1				
073		817667-5	CAUTION LABEL	1				
074		810968-0	CAUTION LABEL	1				
075		JM23000063	LIMIT RING	1				
076		JM23000064	SCREW	1			Y05041	
077		JM23000065	FLANGE	2				
078		JM23000066	LOCK SPRING	1				
079		JM23000067	SHAFT LOCK	1				
080		JM23000068	COVER	1				
081		JM23000030	FLAT WASHER5	2				
082		JM23000031	SPRING WASHER5	2			Y08248	
082-1		JM23000025	SPRING WASHER8	2	X	Y08248		
083		JM23000069	PAN HEAD SCREW M5X12	2				
084		JM23000070	FLAT WASHER16	1				
085		JM23000071	ANTI-LOOSE NUT16	1				
086		JM23000072	SAFETY COVER COMP.	1				
087		JM23000073	TORSION SPRING	1				
088		JM23000074	SQUARE NECK BOLTM6X10	1				
089		JM23000075	WHEEL	1				
090		JM23000076	PUSH NUT	1				
091		JM23000077	STEPPED BOLT M6	1				
092		JM23000078	RUBBER SLEEVE	1				
093		JM23000079	FIX PLATE	1				
094		JM23000080	ANTI-LOOSE NUTM6	1				
095		JM23000081	STEPPED BOLT M5	1				
097		810964-8	CAUTION LABEL	1			Y08723	
098		JM23080042	NAME PLATE	1				
099		JM23000084	SPINDLE	1				
100		JM23000085	KEY5X10	1				
101		JM23000086	BALL BEARING 6304-RZ	1				
102		JM23000087	RETAINING RING S-20	1				
103		JM23000088	HELICAL GEAR	1				

Interchange  
O : Yes  
X : No  
< : the new part can be substituted for the current.  
> : the current part can be substituted for the new.  
S : Interchangeable as a set.

<b>VN</b>	<b>VIETNAM</b>
-----------	----------------

### MT230 / MITER SAW

Item	Sub	Parts No.	Parts Description	Qty	I/C	E/C No.	Close No.	Remark
104		JM23000089	RETAINING RING S-16	1				
105		JM23000090	TRUSS HEAD SCREW M8X12	1				
106		JM23000091	GEAR HOUSING COMP.	1				
107		JM23000092	PAN HEAD SCREW M5 X 25	1			Y08634	
107-1		JM23000092	PAN HEAD SCREW M5 X 25	1	O	Y08634		
108		JM23000093	LIMIT PLATE	1				
109		JM23000094	LIMIT PAD	1				
110		JM23000095	ADJUST PAD	1				
111		JM23000096	HEX.NUTM4	6				
112		JM23000197	HANDLE COVER	1			Y06473	
112-1		JM23000097	HANDLE COVER	1	S	Y06473	Y08281	
112-2		JM00000028	HANDLE COVER RED	1	X	Y08281		
113		JM23000098	FAN GUIDE	1				
114		JM23000099	BALL BEARING 6201Z	1				
115		JM23000100	ARMATURE ASS'Y (230V)	1				
	D10		INC. 114,117					
116		JM23000101	SELF TAPING SCREWST4.8X70	2				
117		JM23000102	BALL BEARING 6001Z	1				
118		JM23000103	RUBBER RING	1				
119		JM23000104	FIELD ASS'Y (230V)	1				
	D10		INC. 120					
120		JM23000105	NOISE SUPPRESSOR	2			Y05878	
121		JM23000106	SELF TAPING SCREWST4.2X12	2				
122		JM23000107	STRAIN RELIEF	1				
123		JM23000108	POWER SUPPLY CORD	1			Y05102	
123-1		JM23000154	POWER SUPPLY CORD ASSY GAMBIA	1	<	Y05102		
124		JM23000109	CORD GUARD	1				
125		JM23000110	CHOKE COIL	1			Y08723	
125-1		JM23000110	CHOKE COIL	1	O	Y08723		
126		JM23000111	CLAMP	1				
127		JM23000112	SWITCHCB21-B	1			Y08281	
127-1		JM00000067	SWITCH	1	X	Y08281		
128		JM23000113	SELF TAPING SCREWST 3X8	2			Y08281	
128-1		JM23000106	SELF TAPING SCREWST4.2X12	2	X	Y08281		
129		JM23000114	SWITCH LEVER	1			Y08313	
129-1		JM00000272	SWITCH LEVER	1	X	Y08313		
130		JM23000115	SELF TAPING SCREWST4.2X12	2			Y08281	
130-1		JM00000211	TAPING SCREW ST2.9X17	2	X	Y08281		
131		JM23000116	TERMINAL BASE	1				
132		JM23000196	MOTOR HOUSING COMP.	1			Y06473	
	D10		INC. 97,136,137				Y06473	
132-1		JM23000117	MOTOR HOUSING COMP.	1	S	Y06473	Y08281	
	D10		INC. 97,136,137			Y06473	Y08281	
132-2		JM00000026	MOTOR HOUSING COMPLETE RED	1	X	Y08281		
	D10		INC. 97			Y08281		
133		JM23000118	PAN HEAD SCREW M4X30	6			Y08249	
133-1		JM00000212	TAPPING SCREW ST2.9X30	1	X	Y08249		
134		JM23000119	SELFTAPPING SCREW	1			Y08249	
134-1		JM00000214	PAN HEAD SCREW M5X25	4	X	Y08249		
135		JM23000120	BRUSH HOLDER CAP	2				
136		JM23000121	BRUSH HOLDER	2			Y08281	
137		JM23000122	HEX. SOCKET HEAD BOLT M5 X 8	2			Y08281	
138		JM23000123	CARBON BRUSH 2PCS/SET	1				
139		JM23000124	SELF TAPING SCREWST5.2X12	2			Y08249	
139-1		JM00000213	SELF TAPING SCREW ST4.8X9	2	X	Y08249		
140		JM23000125	MOTOR REAR COVER	1				
141		JM23000126	WING BOLT M6X12	1				
151		JM23000183	CAPACITOR	1		Y05446	Y08249	
151-1		JM23000183	CAPACITOR	1		Y08723		
152		JM23000185	LOCKING KNOB	1		Y05643		
153		JM23000005	KNOCK SPRING	1		Y06553		
154		JM23000138	PAN HEAD SCREW M4X10	1		Y08247		
155		JM23000138	PAN HEAD SCREW M4X10	1		Y08247		
156		JM23000136	FLAT WASHER4	2		Y08249		
157		JM23000118	PAN HEAD SCREW M4X30	5		Y08249		

Interchange  
O : Yes  
X : No  
< : the new part can be substituted for the current.  
> : the current part can be substituted for the new.  
S : Interchangeable as a set.

