



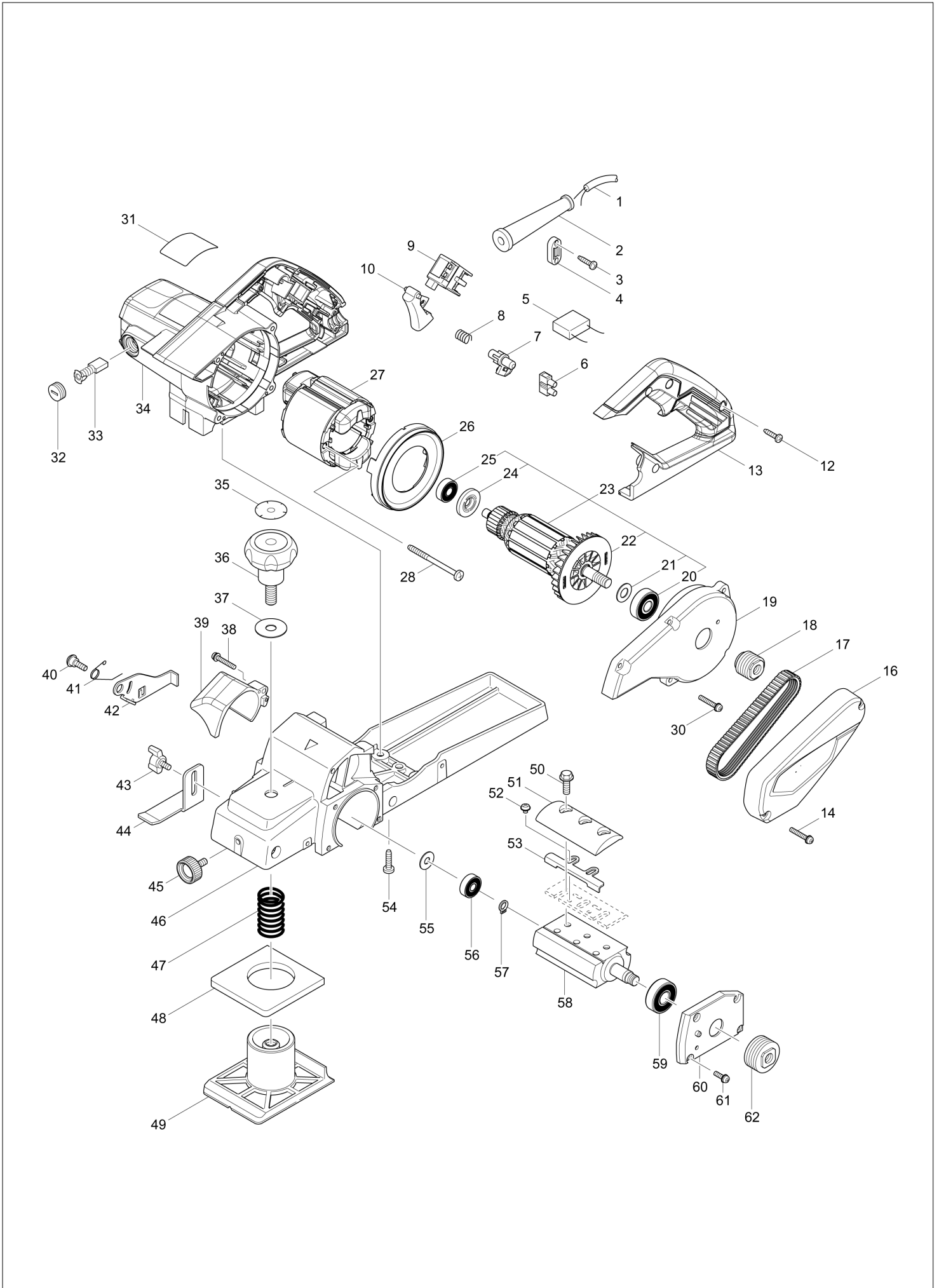
VN	VIETNAM
----	---------

Diagram / Parts List

M1100

82MM PLANER

(VN) M1100 / 82MM PLANER



VN	VIETNAM
-----------	----------------

M1100 / 82MM PLANER

Item	Sub	Parts No.	Parts Description	Qty	I/C	E/C No.	Close No.	Remark
001-1		691771-6	POWER SUPPLY CORD 0.75-2-5.0	1			DA400	
001-2		691780-5	POWER SUPPLY CORD 0.75-2-2.0	1	X	DA400		
002		682574-9	CORD GUARD 10-90	1				
003		266326-2	TAPPING SCREW 4X18	2				
004		687140-7	STRAIN RELIEF	1				
007		418871-5	LOCK ON BUTTON	1				
008		233423-9	COMPRESSION SPRING 9	1				
009		650545-4	SWITCH TGA115CT-2	1				
010		418873-1	SWITCH LEVER	1				
012		266326-2	TAPPING SCREW 4X18	3				
013		412715-1	HANDLE COVER	1				
014		265101-3	PAN HEAD SCREW M4X25	2				
016		458047-2	BELT COVER	1				
017		225096-2	POLY V-BELT 5-285	1				
018		222166-8	V-PULLEY 5-23.5L	1				
019		317854-1	BRACKET	1				
020		211476-8	BALL BEARING 6200ZZ	1				
021		267256-0	FLAT WASHER 10	1				
022		240064-4	FAN 70	1				
023		513853-3	ARMATURE ASS'Y 220V	1				
	D10		INC. 20-22,24,25					
024		681644-1	INSULATION WASHER	1				
025		210046-0	BALL BEARING 608ZZ	1				
026		454051-9	BAFFLE PLATE	1				
027		594533-0	FIELD ASS'Y 220V	1				
	C10	654449-2	RING TERMINAL	2				
	C20	654485-8	PARALLEL SPLICE	2				
028		266352-1	TAPPING SCREW 5X65	2				
030		265101-3	PAN HEAD SCREW M4X25	5				
031		853P90-6	M1100 NAME PLATE	1				
032		643750-0	BRUSH HOLDER CAP 7-11	2				
033		B-80379	CARBON BRUSH SET CB-303A	1				
034		140U92-4	MOTOR HOUSING COMPLETE	1				
	C10	643708-9	BRUSH HOLDER 5-11	2				
035		890029-2	SCALE LABEL	1				
036		271329-3	KNOB 50	1				
037		267258-6	FLAT WASHER 10	1				
038		265101-3	PAN HEAD SCREW M4X25	1				
039		418874-9	CHIP COVER	1				
040		265150-0	+SHOULDER SCREW M5X18	1				
041		231677-2	TORSION SPRING 9	1				
042		345507-2	DRUM COVER	1				
043		265760-3	THUMB SCREW M5X10	1				
044		345506-4	DEPTH GUIDE	1				
045		265767-9	THUMB SCREW M6X13	1				
046		154501-1	MAIN FRAME COMPLETE	1				
047		233422-1	COMPRESSION SPRING 19	1				
048		421902-1	RUBBER PACKING	1				
049		317852-5	FRONT BASE	1				
050		265512-2	FLANGE HEX.BOLT M6X17	6				
051		187676-1	DRUM PLATE SET	1				
052		265132-2	+ PAN HEAD SCREW M4X5	4				
053		345644-2	ADJUST PLATE	2				
054		266420-0	TAPPING SCREW 5X20	4				
055		267293-4	FLAT WASHER 7	1				
056		210030-5	BALL BEARING 627ZZ	1				
057		961003-8	RETAINING RING S-7	1				
058		161141-8	DRUM	1				
059		211477-6	BALL BEARING 6201ZZ	1				
060		317853-3	BEARING BOX	1				
061		265099-4	PAN HEAD SCREW M4X14	4				
062		222165-0	V-PULLEY 5-32.4	1				
A01		122694-2	SHARPENING HOLDER ASS'Y	1				
	C10	252649-4	THUMB NUT M6	2				
	C20	266332-7	R.H SQUARE NECK BOLT M6X35	2				

Interchange
O : Yes
X : No
< : the new part can be substituted for the current.
> : the current part can be substituted for the new.
S : Interchangeable as a set.

