



VN	VIETNAM
----	---------

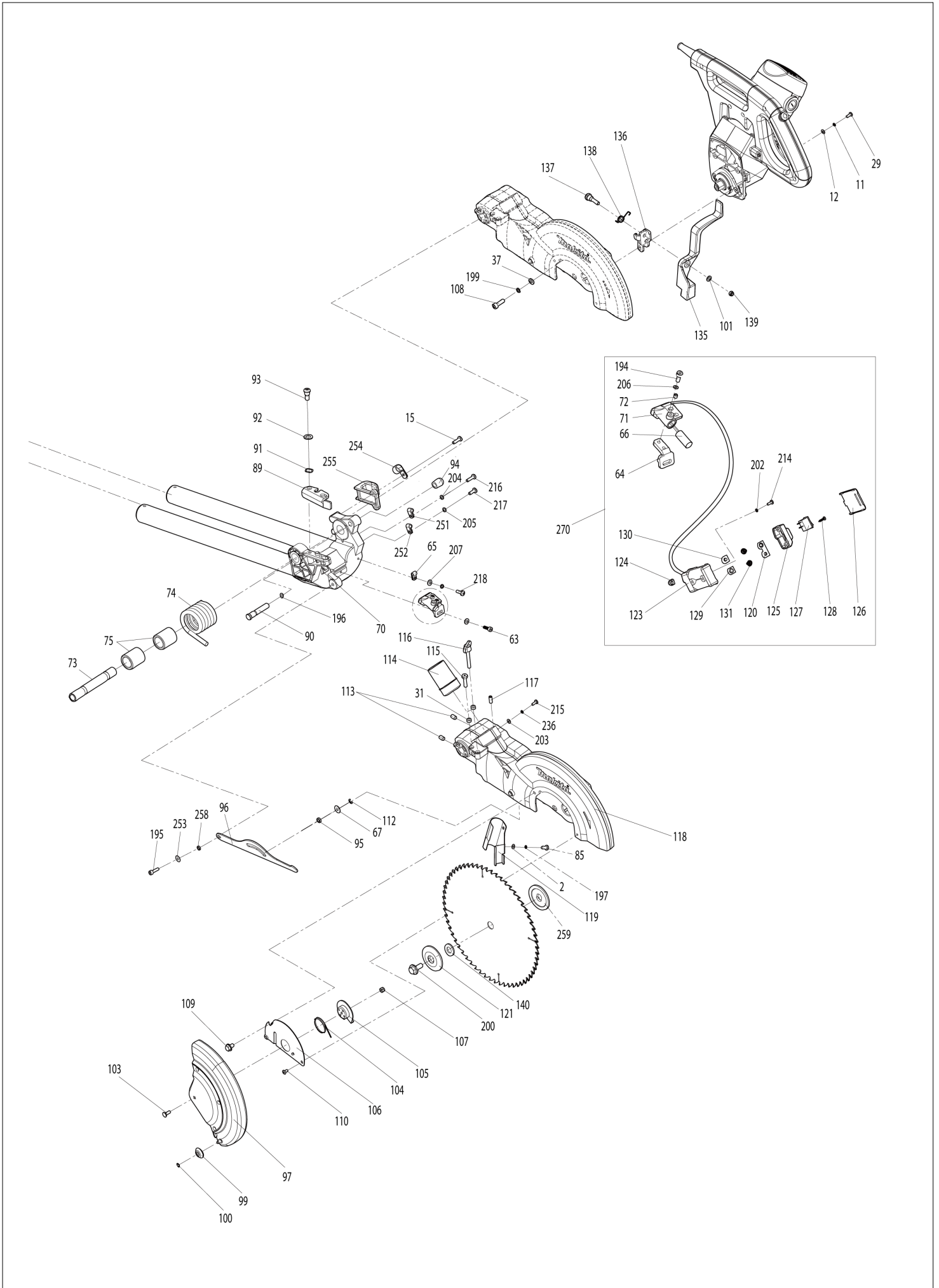
# Diagram / Parts List

**LS1018L**

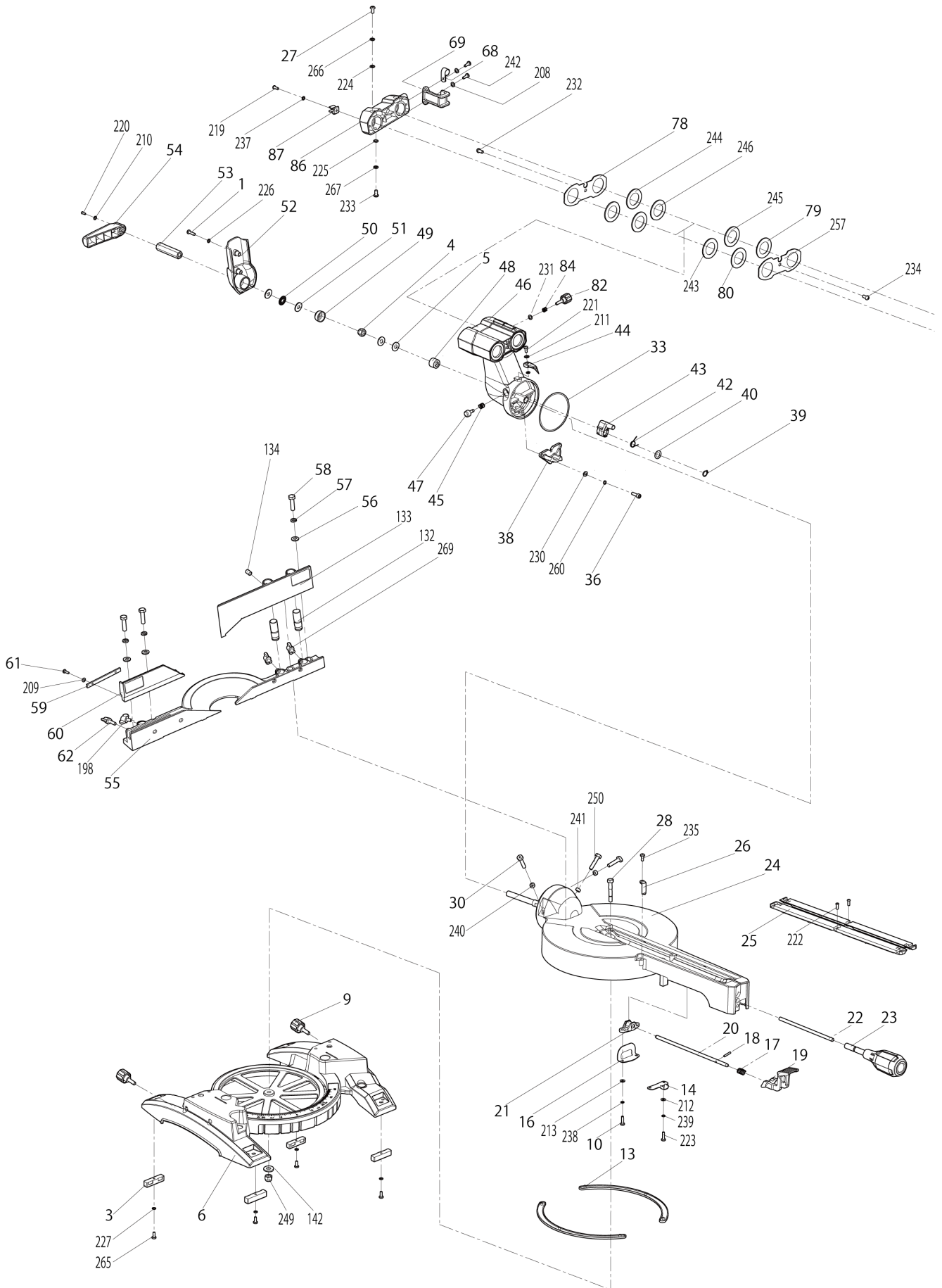
**260MM SLIDE COMPOUND MITER SAW**



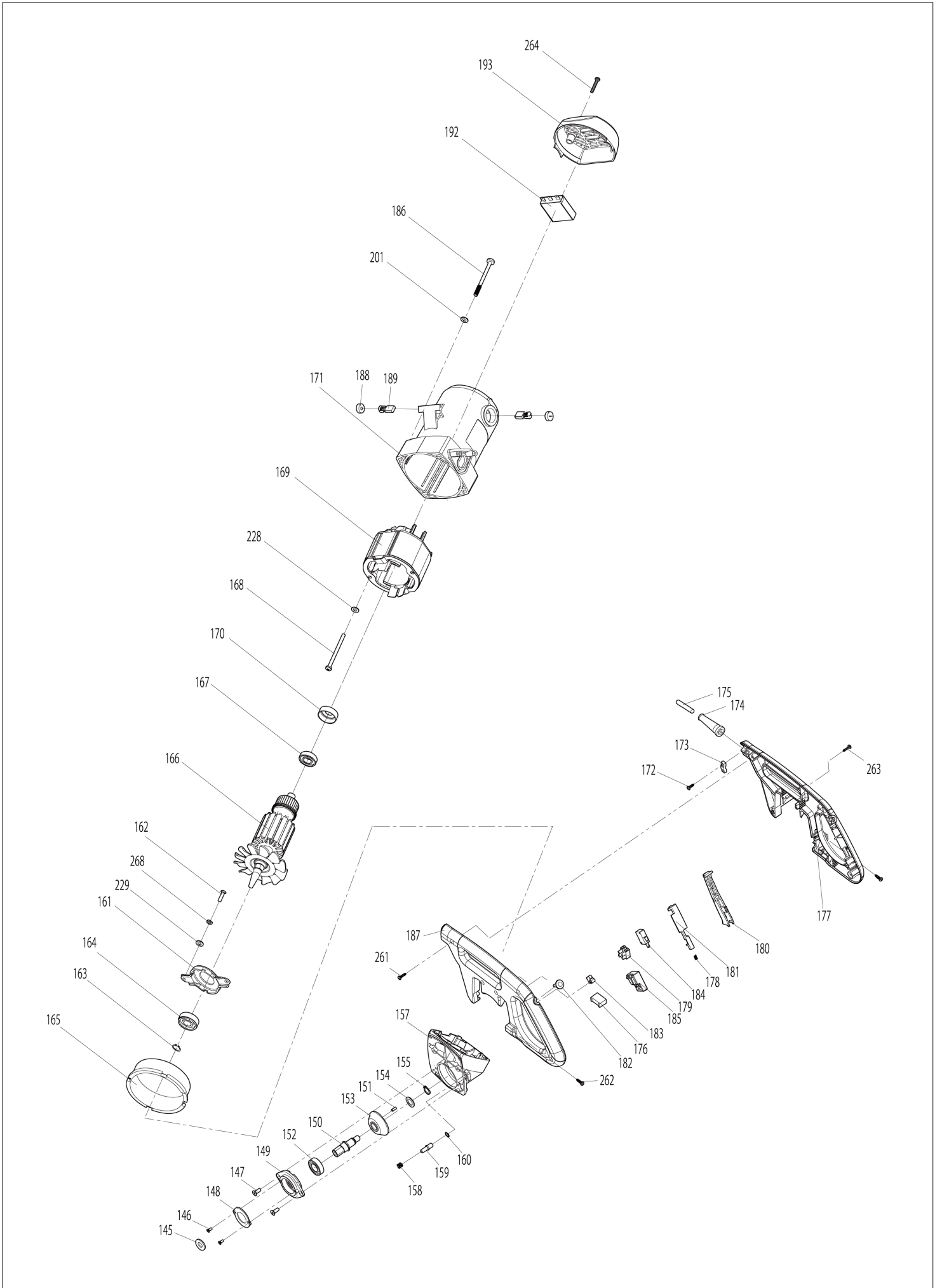
# (VN) LS1018L / 260MM SLIDE COMPOUND MITER SAW



# (VN) LS1018L / 260MM SLIDE COMPOUND MITER SAW



# (VN) LS1018L / 260MM SLIDE COMPOUND MITER SAW



<b>VN</b>	<b>VIETNAM</b>
-----------	----------------

### LS1018L / 260MM SLIDE COMPOUND MITER SAW

Item	Sub	Parts No.	Parts Description	Qty	I/C	E/C No.	Close No.	Remark
001		JM23100006	CROSS HEAD SCREW M5X20	2				
002		JM23100007	FLAT WASHER 5	2				
003		JM23100008	PAD	4				
004		JM23100009	LOCKNUT M10	1				
005		JM23100010	FLAT WASHER 10	2				
006		JM23100300	BASE COMPLETE	1				
	C10	JM2708A060	CAUTION LABEL	2				
	C20	JM23100012	MITER SCALE LABEL	1		Y06583	Y08307	
	D10		INC. 7				Y06583	
	D11		INC. 289			Y08307	Y08365	
	D12		INC. 007, 289			Y08365		
007		JM23100012	MITER SCALE LABEL	1			Y06583	
007-1		JM23100012	MITER SCALE LABEL	1		Y08365		
009		JM23100013	KNOB FOR EXT.WING	2			Y08266	
009-1		JM00000074	PAN HEAD SCREW M6X20	2	X	Y08266	Y08307	
009-2		JM23100013	KNOB FOR EXT.WING	2	X	Y08307		
010		JM23100014	CROSS HEAD SCREW M4X15	2				
013		JM23100017	FRICTION PLATE	2				
014		JM23100018	LOCK PLATE A	1				
015		JM23100019	CROSS HEAD SCREW M4X18	2			Y08268	
015-1		JM23100019	CROSS HEAD SCREW M4X18	1	O	Y08268		
016		JM23100020	LOCK PLATE B	1				
017		JM23100021	LOCK SPRING	1				
018		JM23100022	LOCK PIN	1				
019		JM23100023	PRESS PLATE	1				
020		JM23100024	LOCK SHAFT B	1				
021		JM23100025	WORKING TABLE LOCKING BRACKET	1				
022		JM23100026	LOCK SHAFT A	1				
023		JM23100027	MITER LOCKING HANDLE	1				
024		JM23200100	WORKING TABLE COMPLETE	1				
	C10	JM23200004	BEVEL SCALE	1		Y06583	Y08365	
	C20	JM23100038	ELASTIC PIN 4X20	1		Y06583	Y08307	
	C30	JM23100039	LOCKING ROD	1		Y06583	Y08307	
	C40	JM23100009	LOCKNUT M10	1		Y06583	Y08307	
	D10		INC. 32,34,35				Y06583	
	D11		INC. 292-295			Y08307	Y08365	
	D12		INC. 292-295, 308			Y08365		
025		JM23100029	TABLE INSERT	2				
026		JM23100030	MITER POINTER	1				
027		JM23100031	CROSS HEAD SCREW M5X15	2				
028		JM23100032	PIVOT SHAFT	1				
030		JM23100034	HEX BOLT M6X28	1				
031		JM23100035	ANTI-LOOSEN RING	2			Y08268	
031-1		JM23100035	ANTI-LOOSEN RING	1	O	Y08268		
032		JM23200004	BEVEL SCALE	1			Y06583	
033		JM23100037	FRICTION RING	1				
034		JM23100038	ELASTIC PIN 4X20	1			Y06583	
035		JM23100039	LOCKING ROD	1			Y06583	
036		JM23100040	H.S.BOLT M6X20	3				
037		JM23100041	FLAT WASHER 6	4				
038		JM23200005	45DEGREE LIMIT BRACKET	1				
039		JM23100043	RETAINING RING 10	1			Y08268	
039-1		JM27100102	RETAINING RING 12	1	X	Y08268		
040		JM23100044	FLAT WASHER 12X20X1	1				
041		JM23100045	ANGLE LIMIT SHAFT	1			Y06583	
041-1		JM23100045	ANGLE LIMIT SHAFT	1		Y07975		
042		JM23100046	90DEGREE BLOCK SPRING	1				
043		JM23100047	90DEGREE BLOCK	1				
044		JM23100048	BEVEL POINTER	1				
045		JM23100049	MITER PRESSION SPRING	1				
046		JM23100330	SUPPORT ARM COMPLETE	1				
	C10	JM23100045	ANGLE LIMIT SHAFT	1		Y06583	Y07975	
	C20	JM23100081	BUFFER A	1		Y06583	Y08307	
	C30	JM23100085	LINEAR BEARING	1		Y06583	Y08307	
	C40	JM23100087	LOCK SCREW M6X8	1		Y06583	Y08307	

Interchange  
O : Yes  
X : No  
< : the new part can be substituted for the current.  
> : the current part can be substituted for the new.  
S : Interchangeable as a set.

## LS1018L / 260MM SLIDE COMPOUND MITER SAW

Item	Sub	Parts No.	Parts Description	Qty	I/C	E/C No.	Close No.	Remark
	C50	JM23100081	BUFFER A	1		Y06583	Y08307	
	D10		INC. 77,79-81,83,243-246,256				Y06583	
	D11		INC. 79-80,243-246			Y06583	Y08307	
	D12		INC. 79,80,243-246,296-303			Y08307		
047		JM23100051	LIMITED KNOB	1				
048		JM23100052	CLAMP PLATE	1				
049		JM23100053	BOWL TYPE PLATE	1				
050		JM23100054	SURFACE BEARING	1				
051		JM23100055	BIG FLAT WASHER 10X26X2.5	2				
052		JM23100056	SLIDING BRACKET COVER	1				
053		JM23100057	HEX NUT	1				
054		JM23100058	BEVEL LOCKING HANDLE	1				
055		JM23100059	RIP FENCE	1			Y05678	
055-1		JM23200037	RIP FENCE	1	O	Y05678		
056		JM23100060	FLAT WASHER 8	4				
057		JM23100061	SPRING WASHER 8	4				
058		JM23100062	HEX BOLT M8X30	4				
059		JM23100063	KEY	1				
060		JM23100320	SUB FENCE COMPLETE	1				
	C10	JM23180060	CAUTION LABEL	1			Y08307	
	D10		INC. 311, 312			Y08365		
061		JM23100065	CROSS HEAD SCREW M4X8	2				
062		JM23100066	WING KNOB M6X20	1				
063		JM23100067	H.S.BOLT M4X12	1			Y08268	
063-1		JM23100146	H.S.BOLT M4X10	1	X	Y08268		
064		JM23100068	LASER MOVING FIX PLATE	1				
065		JM23100069	LASER CORD CLAMP	1				
066		JM23100070	LASER	1				
067		JM23100071	THIN FLAT WASHER 6	1				
068		JM23100072	CORD CLAMP	1				
069		JM23100073	CORD WRAP BRACKET	1				
070		JM23100340	UP BLADE GUARD BRACKET	1			Y05758	
	C10	JM23180059	CAUTION LABEL	1			Y05758	
	D10		INC. 76,141				Y05758	
070-1		JM23100342	UP BLADE GUARD BRACKET CMPLT	1	O	Y05758	Y08268	
	C10	JM23100145	ELASTIC PIN 5X30	2		Y06583	Y08268	
	C20	JM23180059	CAUTION LABEL	1		Y05758	Y08268	
	D10		INC. 76,141			Y05758	Y06583	
070-2		JM23100343	UP BLADE GUARD BRACKET CMPLT	1	O	Y08268	Y08365	
	C20	JM23180059	CAUTION LABEL	1		Y08268	Y08307	
070-3		JM23100342	UP BLADE GUARD BRACKET CMPLT	1	X	Y08365		
	D11		INC. 314			Y08365		
071		JM23100075	LASER BASE	1				
072		JM23100076	H.S.SCREW M4X10	1			Y08268	
072-1		JM23300038	HEX SOCKET SET SCREW M4X6	1	X	Y08268		
073		JM23100077	CONNECTION SHAFT	1				
074		JM23100078	TORSION SPRING	1				
075		JM23100079	LOCATION TUBE	2				
076		JM23100080	SLIDING BAR	2			Y05862	
077		JM23100081	BUFFER A	1			Y06583	
078		JM23100082	BEARING BAFFLE	1				
079		JM23100083	LIMITED BRACKET	2			Y08307	
079-1		JM23100083	LIMITED BRACKET	1	O	Y08307		
080		JM23100084	DUSTPROOF RING	1			Y08307	
080-1		JM23100083	LIMITED BRACKET	1	X	Y08307		
081		JM23100085	LINEAR BEARING	3			Y06583	
082		JM23100086	SLIDING BAR LOCKING KNOB	1				
083		JM23100087	LOCK SCREW M6X8	2			Y06583	
084		JM23100088	PRESSURE SPRING	1				
085		JM23100089	CROSS HEAD SCREW M5X12	2				
086		JM23100090	SLIDING BAR REAR COVER	1				
087		JM23100091	WRENCH CLIP	1				
089		JM23100092	CUTTING DEPTH ADJUSTABLE PLATE	1				
090		JM23100093	PIN C	1			Y05758	
090-1		JM23100193	PIN C	1	O	Y05758		

Interchange  
O : Yes  
X : No  
< : the new part can be substituted for the current.  
> : the current part can be substituted for the new.  
S : Interchangeable as a set.

<b>VN</b>	<b>VIETNAM</b>
-----------	----------------

### LS1018L / 260MM SLIDE COMPOUND MITER SAW

Item	Sub	Parts No.	Parts Description	Qty	I/C	E/C No.	Close No.	Remark
091		JM23100094	WAVE SPRING WASHER	1				
092		JM23100095	FLAT WASHER 8X14X1	1				
093		JM23100096	DEPTH ADJUSTABLE PLATE BOLT	1				
094		JM23100097	PIN CAP	1				
095		JM23100098	LINK SLEEVE	1				
096		JM23100099	LINK	1				
097		JM23100350	LOWER BLADE GUARD COMPLETE	1			Y08266	
	C10	JM23100101	GUARD RIVET	3		Y06583	Y07419	
	C20	JM23100105	LOWER BLADE GUARD PLATE	1		Y06583	Y07419	
	C30	JM23100104	FLAT WASHER 5	3		Y06583	Y07419	
	D10		INC. 98,101,102				Y06583	
	D11		INC. 101			Y06583	Y07340	
097-1		JM23210008	LOWER BLADE GUARD COMPLETE	1	X	Y08266		
098		JM23100101	GUARD RIVET	3			Y06583	
099		JM23100102	GUARD WHEEL	1				
100		JM23100103	WHEEL LOCK RING	1				
102		JM23100105	LOWER BLADE GUARD PLATE	1			Y06583	
103		JM23100106	SQUARE NECK BOLT M6X12	1				
104		JM23100107	GUARD SPRING	1				
105		JM23100108	BOWL PLATE	1				
106		JM23100109	GUARD FIX PLATE	1				
107		JM23100110	LOCKNUT M6	1				
108		JM23200006	H.S.BOLT M6X22	4				
109		JM23100112	HEX BOLT FOR GUARD	1				
110		JM23100113	CROSSHEAD SCREW FOR GUARD	1				
111		JM23100114	LINK PIN	1			Y06583	
112		JM23100115	RETAINING RING 5	1				
113		JM23100116	LOCK SCREW M6X12	2				
114		JM23100117	DUST PORT	1				
115		JM23100118	HEX BOLT M6X25	1				
116		JM23100119	LIMITED KNOB	1				
117		JM23100120	H.S.SET BOLT M6X16	1				
118		JM23100360	UP BLADE GUARD COMPLETE	1			Y05678	
	C10	JM23180058	CAUTION LABEL	1			Y05678	
	D10		INC. 143				Y05678	
118-1		JM23200141	UP BLADE GUARD COMPLETE	1	O	Y05678	Y05758	
	C10	JM23180058	CAUTION LABEL	1		Y05678	Y05758	
	D10		INC. 143			Y05678	Y05758	
118-2		JM23200146	UP BLADE GUARD COMPLETE	1	O	Y05758	Y08268	
	C10	JM23180058	CAUTION LABEL	1		Y05758	Y08268	
	C20	JM23100114	LINK PIN	1		Y06583	Y08268	
	C30	JM23100147	BUFFER	1		Y06583	Y08268	
	D10		INC. 143			Y05758	Y06583	
118-3		JM23200147	UP BLADE GUARD COMPLETE	1	>	Y08268		
	C10	JM23180058	CAUTION LABEL	1		Y08268	Y08307	
	C20	JM23100114	LINK PIN	1		Y08268	Y08307	
	C30	JM23100147	BUFFER	1		Y08268	Y08307	
	D10		INC. 305,306			Y08307		
119		JM23100122	DUST GUIDE PLATE	1				
120		JM23100123	COPPER CONNECTION PLATE	1				
121		JM23100124	BLADE FLANGE	1				
123		JM23100125	BATTERY BOX	1				
124		JM23100126	LASER CORD TUBE	1				
125		JM23100127	LASER SWITCH COVER	1				
126		JM23100128	BATTERY BOX COVER	1				
127		JM23100129	LASER SWITCH	1				
128		JM23100130	SELF-TAPPING SCREW 2.9X12	2				
129		JM23100131	ANODE COPPER SHEET	1				
130		JM23100132	CATHODE COPPER SHEET	1				
131		JM23100133	BATTERY BOX SPRING	2				
132		JM23200007	RIGHT SUB FENCE CONNECTION PIN	2				
133		JM23200110	RIGHT SUB FENCE COMPLETE	1			Y08266	
	C10	JM23280056	CAUTION LABEL	1			Y08266	
133-1		JM00000077	RIGHT SUB FENCE COMPLETE	1	X	Y08266	Y08365	
	C10	JM23280056	CAUTION LABEL	1		Y08266	Y08307	

Interchange  
O : Yes  
X : No  
< : the new part can be substituted for the current.  
> : the current part can be substituted for the new.  
S : Interchangeable as a set.

<b>VN</b>	<b>VIETNAM</b>
-----------	----------------

### LS1018L / 260MM SLIDE COMPOUND MITER SAW

Item	Sub	Parts No.	Parts Description	Qty	I/C	E/C No.	Close No.	Remark
133-2		JM23200008	RIGHT SUB FENCE	1	X	Y08365		
134		JM23200009	H.S.SCREW WITH DOG POINT M6X10	2				
140		JM23100191	RING 25.4	1				
141		JM23100145	ELASTIC PIN 5X30	2			Y06583	
142		JM23100154	BIG FLAT WASHER 10	1				
143		JM23100147	BUFFER	1			Y06583	
145		JM23200012	OUTPUT SHAFT RING 15.88	1				
146		JM23200013	COUNTERSUNK HEAD BOLT M4X10	2				
147		JM23200014	COUNTERSUNK HEAD BOLT M6X15	2				
148		JM23200015	BEARING PRESS PLATE	1				
149		JM23200016	BEARING COVER	1				
150		JM23200017	OUTPUT SHAFT	1				
151		JM23200018	KEY 4X10	1				
152		JM23200019	BEARING 6003	1			Y06302	
152-1		JM23200031	BEARING 6003	1	X	Y06302	Y08307	
152-2		JM23200019	BEARING 6003	1	O	Y08307		
153		JM23200020	GEAR	1				
154		JM23200021	SHAFT WASHER	1				
155		JM23200022	RETAINING RING 14	1				
156		JM23200023	OIL BUSH	1			Y06583	
157		JM23200130	GEAR BOX COMPLETE	1				
	C10	JM23200023	OIL BUSH	1		Y06583	Y08307	
	D10		INC. 156				Y06583	
158		JM23200025	GEAR LOCK SPRING	1				
159		JM23200026	GEAR LOCK PIN	1				
160		JM23200027	RETAINING RING 10.5X1	1				
161		JM23200028	SHAFT FIX COVER	1				
162		JM23200029	CROSS HEAD SCREW M5X18	2				
163		JM23200030	RETAINING RING 16	1				
164		JM23200031	BEARING 6003	1			Y08307	
164-1		JM23200019	BEARING 6003	1	O	Y08307		
165		JM23100168	BAFFLE RING	1				
166		JM23200001	ROTOR ASSEMBLY	1				
	D10		INC. 161,164,167			Y08457		
167		JM23200032	BEARING 6001	1				
168		JM23100170	SELF-TAPPING SCREW M5X70	2				
169		JM23100001	STATOR ASSEMBLY	1				
170		JM23100172	ABSORBER RING	1				
171		JM23200120	MOTOR HOUSE COMPLETE	1			Y08268	
	C10	JM23180056	CAUTION LABEL	1			Y08268	
	C20	JM23180057	CAUTION LABEL	1			Y08268	
	C30	JM23280021	NAME PLATE	1			Y08268	
	C40	JM23100184	CARBON BRUSH HOUSE	2		Y06583	Y08268	
	C50	JM23100185	H.S.SCREW M5X8	2		Y06583	Y08268	
	D10		INC. 190,191				Y06583	
171-1		JM23200121	MOTOR HOUSE COMPLETE	1	>	Y08268		
	C10	JM23180056	CAUTION LABEL	1		Y08268	Y08307	
	C20	JM23180057	CAUTION LABEL	1		Y08268	Y08307	
	C30	JM23280021	NAME PLATE	1		Y08268	Y08307	
	C40	JM23100184	CARBON BRUSH HOUSE	2		Y08268	Y08307	
	C50	JM23100185	H.S.SCREW M5X8	2		Y08268	Y08307	
172		JM23100167	SELF TAPPING SCREW M4X16	2			Y08268	
172-1		JM23000106	SELF TAPING SCREWST4.2X12	2	X	Y08268		
173		JM23100166	CORD CLAMP	1				
174		JM23100165	PROTECTION TUBE	1				
175		JM23000154	POWER SUPPLY CORD ASSY GAMBIA	1				
176		JM23100169	CAPACITOR	1				
177		JM23200034	RIGHT HANDLE	1				
178		JM23100176	SWITCH HANDLE SPRING	1				
179		JM23100171	TERMINAL POLE	1				
180		JM23100174	SWITCH HANDLE	1				
181		JM23100175	SWITCH LOCK PLATE	1				
182		JM23100177	BRAKE SYSTEM SWITCH KEY	1				
183		JM23100173	SWITCH LOCK BRACKET	1				
184		JM23100178	BRAKE SYSTEM SWITCH	1				

Interchange  
O : Yes  
X : No  
< : the new part can be substituted for the current.  
> : the current part can be substituted for the new.  
S : Interchangeable as a set.



<b>VN</b>	<b>VIETNAM</b>
-----------	----------------

### LS1018L / 260MM SLIDE COMPOUND MITER SAW

Item	Sub	Parts No.	Parts Description	Qty	I/C	E/C No.	Close No.	Remark
185		JM23100179	ELECTRIC SWITCH	1				
186		JM23200035	CROSS HEAD SCREW M6X50	4				
187		JM23200036	LEFT HANDLE	1				
188		JM23100182	SCREW CAP	2				
189		JM23100183	CARBON BRUSH	2			Y05842	
189-1		JM23000123	CARBON BRUSH 2PCS/SET	2	O	Y05842	Y06169	
189-2		JM23000123	CARBON BRUSH 2PCS/SET	1	O	Y06169		
190		JM23100184	CARBON BRUSH HOUSE	2			Y06583	
191		JM23100185	H.S.SCREW M5X8	2			Y06583	
192		JM23100186	SOFT STARTER	1				
193		JM23100188	MOTOR REAR COVER	1				
194		JM23100146	H.S.BOLT M4X10	2				
195		JM23100148	H.S.BOLT M6X20 WITH GLUE	1				
196		JM23100150	SEALING RING	1				
197		JM23100149	SPRING WASHER 5	2				
198		JM23100152	WING KNOB,M6X10	1				
199		JM23100151	SPRING WASHER 6	4				
200		JM23100153	BLADE BOLT	1				
201		JM23100190	SPECIAL WASHER 6	4				
202		JM23100016	FLAT WASHER 4	2				
203		JM23100016	FLAT WASHER 4	1				
204		JM23100016	FLAT WASHER 4	1				
205		JM23100016	FLAT WASHER 4	1				
206		JM23100016	FLAT WASHER 4	2				
207		JM23100016	FLAT WASHER 4	2			Y08268	
207-1		JM23100016	FLAT WASHER 4	1	O	Y08268		
208		JM23100016	FLAT WASHER 4	1				
209		JM23100016	FLAT WASHER 4	2				
210		JM23100016	FLAT WASHER 4	1				
211		JM23100016	FLAT WASHER 4	1				
212		JM23100016	FLAT WASHER 4	2				
213		JM23100016	FLAT WASHER 4	2				
214		JM23100033	PAN HEAD SCREW M4X12	2				
215		JM23100033	PAN HEAD SCREW M4X12	1				
216		JM23100033	PAN HEAD SCREW M4X12	1				
217		JM23100033	PAN HEAD SCREW M4X12	1				
218		JM23100033	PAN HEAD SCREW M4X12	1				
219		JM23100033	PAN HEAD SCREW M4X12	1				
220		JM23100033	PAN HEAD SCREW M4X12	1				
221		JM23100033	PAN HEAD SCREW M4X12	1				
222		JM23100033	PAN HEAD SCREW M4X12	6				
223		JM23100033	PAN HEAD SCREW M4X12	2				
224		JM23100007	FLAT WASHER 5	2				
225		JM23100007	FLAT WASHER 5	2				
226		JM23100007	FLAT WASHER 5	2				
227		JM23100007	FLAT WASHER 5	4				
228		JM23100007	FLAT WASHER 5	2				
229		JM23100007	FLAT WASHER 5	2			Y08268	
230		JM23100041	FLAT WASHER 6	3				
231		JM23100041	FLAT WASHER 6	1				
232		JM23100089	CROSS HEAD SCREW M5X12	1				
233		JM23100089	CROSS HEAD SCREW M5X12	2				
234		JM23100089	CROSS HEAD SCREW M5X12	1				
235		JM23100089	CROSS HEAD SCREW M5X12	1				
236		JM23100015	SPRING WASHER 4	1				
237		JM23100015	SPRING WASHER 4	1				
238		JM23100015	SPRING WASHER 4	2				
239		JM23100015	SPRING WASHER 4	2				
240		JM23100035	ANTI-LOOSEN RING	1				
241		JM23100035	ANTI-LOOSEN RING	2			Y08268	
241-1		JM23100035	ANTI-LOOSEN RING	1	O	Y08268		
242		JM23100019	CROSS HEAD SCREW M4X18	2			Y08268	
242-1		JM23100019	CROSS HEAD SCREW M4X18	1	O	Y08268		
243		JM23100083	LIMITED BRACKET	1			Y08307	
243-1		JM23100084	DUSTPROOF RING	1	X	Y08307		

Interchange  
O : Yes  
X : No  
< : the new part can be substituted for the current.  
> : the current part can be substituted for the new.  
S : Interchangeable as a set.

<b>VN</b>	<b>VIETNAM</b>
-----------	----------------

### LS1018L / 260MM SLIDE COMPOUND MITER SAW

Item	Sub	Parts No.	Parts Description	Qty	I/C	E/C No.	Close No.	Remark
244		JM23100083	LIMITED BRACKET	1				
245		JM23100084	DUSTPROOF RING	2			Y08307	
245-1		JM23100084	DUSTPROOF RING	1	O	Y08307		
246		JM23100084	DUSTPROOF RING	1				
247		JM23100104	FLAT WASHER 5	3			Y06583	
248		JM23100009	LOCKNUT M10	1			Y06583	
249		JM23100009	LOCKNUT M10	1				
250		JM23100034	HEX BOLT M6X28	2			Y08268	
250-1		JM23100034	HEX BOLT M6X28	1	O	Y08268		
251		JM23100069	LASER CORD CLAMP	1				
252		JM23100069	LASER CORD CLAMP	1				
253		JM23100071	THIN FLAT WASHER 6	1				
254		JM23100072	CORD CLAMP	1				
255		JM23100073	CORD WRAP BRACKET	1				
256		JM23100081	BUFFER A	1			Y06583	
257		JM23100082	BEARING BAFFLE	1				
258		JM23100098	LINK SLEEVE	1				
259		JM23100124	BLADE FLANGE	1				
260		JM23100151	SPRING WASHER 6	3				
261		JM23100167	SELF TAPPING SCREW M4X16	5			Y08268	
261-1		JM00000217	SELF TAPPING SCREW ST4.2X18	6	X	Y08268		
262		JM23100167	SELF TAPPING SCREW M4X16	1			Y08268	
262-1		JM00000217	SELF TAPPING SCREW ST4.2X18	1	X	Y08268		
263		JM23100167	SELF TAPPING SCREW M4X16	2			Y08268	
263-1		JM00000217	SELF TAPPING SCREW ST4.2X18	1	X	Y08268		
264		JM23100167	SELF TAPPING SCREW M4X16	2			Y08268	
264-1		JM00000217	SELF TAPPING SCREW ST4.2X18	2	>	Y08268		
265		JM23100006	CROSS HEAD SCREW M5X20	4			Y08330	
265-1		JM23200029	CROSS HEAD SCREW M5X18	4	X	Y08330		
266		JM23100149	SPRING WASHER 5	2				
267		JM23100149	SPRING WASHER 5	2				
268		JM23100149	SPRING WASHER 5	2				
269		JM23100066	WING KNOB M6X20	2				
270		JM23100390	LASER ASSEMBLY	1				
	D10		INC. 64,66,71,72,120,123-131,					
	D20		INC. 194,202,206,214					
272		JM23100500	HOLDER	2		Y08266		
273		JM23100016	FLAT WASHER 4	1		Y08268		
274		JM23100019	CROSS HEAD SCREW M4X18	1		Y08268		
275		JM23100016	FLAT WASHER 4	1		Y08268		
276		JM23100019	CROSS HEAD SCREW M4X18	1		Y08268		
277		JM23100016	FLAT WASHER 4	1		Y08268		
278		JM00000217	SELF TAPPING SCREW ST4.2X18	1		Y08268		
279		JM23100007	FLAT WASHER 5	1		Y08268		
280		JM23100007	FLAT WASHER 5	1		Y08268		
281		JM23500053	EXTERNAL TOOTHED LOCK WASHER	1		Y08268		
282		JM23100035	ANTI-LOOSEN RING	1		Y08268		
283		JM23100034	HEX BOLT M6X28	1		Y08268		
284		JM23100007	FLAT WASHER 5	1		Y08268		
285		JM00000216	EXTERNAL TOOTHED LOCK WASHER	1		Y08268		
286		JM23100035	ANTI-LOOSEN RING	1		Y08268		
287		JM23100041	FLAT WASHER 6	1		Y08268		
288		JM23100016	FLAT WASHER 4	1		Y08268		
289		JM2708B060	CAUTION LABEL	2		Y08307		
292		JM23100039	LOCKING ROD	1		Y08307		
293		JM23100038	ELASTIC PIN 4X20	1		Y08307		
294		JM23100009	LOCKNUT M10	1		Y08307		
295		JM23100028	WORKING TABLE	1		Y08307		
296		JM23100083	LIMITED BRACKET	1		Y08307		
297		JM23100084	DUSTPROOF RING	1		Y08307		
298		JM23100081	BUFFER A	1		Y08307		
299		JM23100087	LOCK SCREW M6X8	2		Y08307		
300		JM23100081	BUFFER A	1		Y08307		
301		JM23100085	LINEAR BEARING	1		Y08307		
302		JM23100085	LINEAR BEARING	1		Y08307		

Interchange  
O : Yes  
X : No  
< : the new part can be substituted for the current.  
> : the current part can be substituted for the new.  
S : Interchangeable as a set.

