



VN	VIETNAM
----	---------

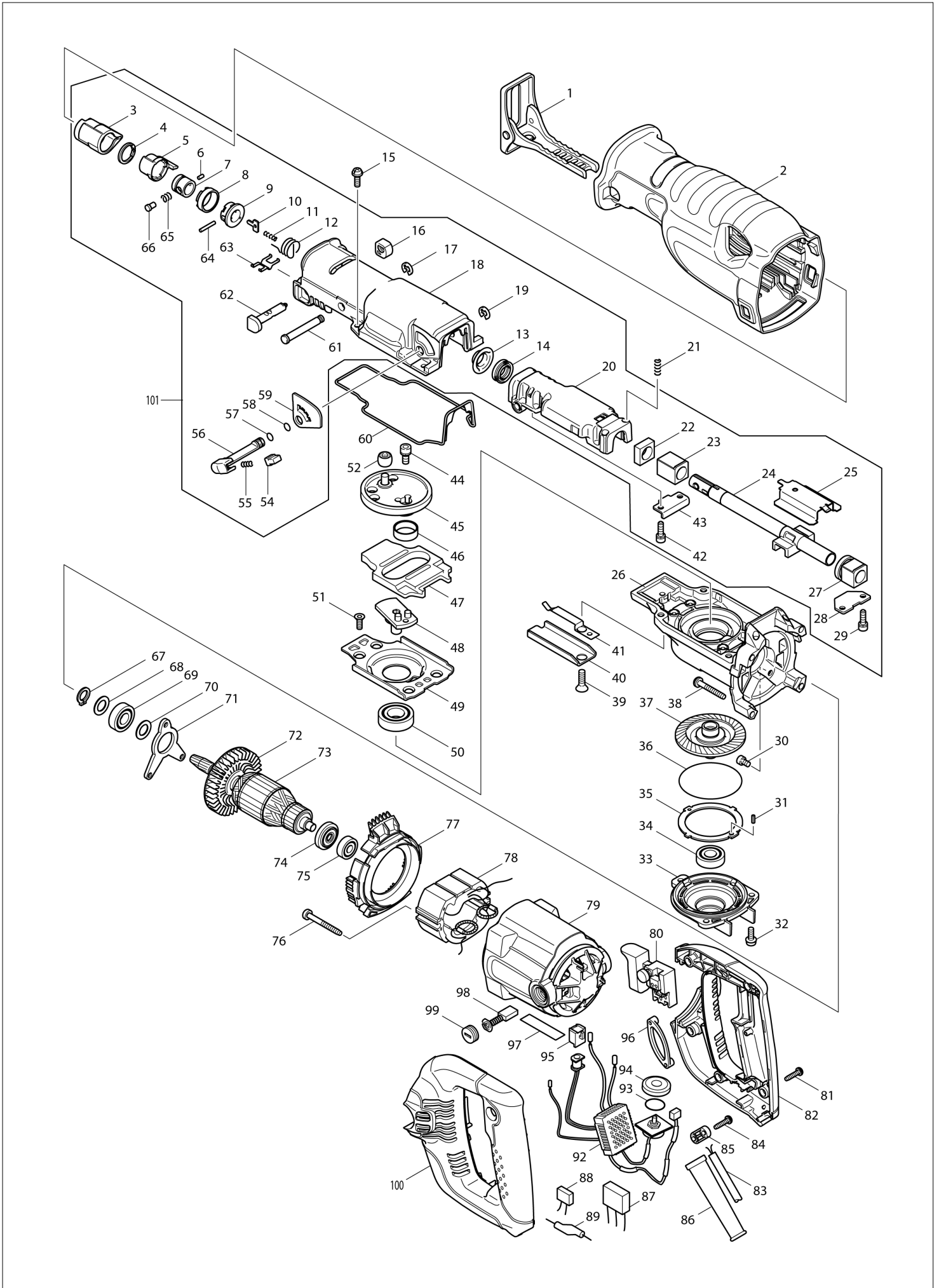
# Diagram / Parts List

**JR3070CT**

**RECIPRO SAW**



(VN) JR3070CT / RECIPRO SAW



<b>VN</b>	<b>VIETNAM</b>
-----------	----------------

### JR3070CT / RECIPRO SAW

Item	Sub	Parts No.	Parts Description	Qty	I/C	E/C No.	Close No.	Remark
001		163453-5	SHOE	1				
002		421904-7	INSULATION COVER	1				
003-1		424147-0	PROTECTOR	1				
004-1		257952-8	RETAINING RING (EXT) 18	1			C8033	
004-2		257430-8	RETAINING RING(EXT)18	1	S	C8033		
005-2		310285-3	DRIVING SLEEVE	1			C1245	
005-3		310658-0	DRIVING SLEEVE	1	S	C1245		
006		268094-3	PIN 3	1				
007-1		331720-8	GUIDE SLEEVE	1			C8033	
007-2		327043-0	GUIDE SLEEVE	1	S	C8033		
008		417791-0	DRIVING SLEEVE GUIDE	1				
009		418311-3	SLEEVE	1				
010		345214-7	PUSH PLATE	1				
011		233025-1	COMPRESSION SPRING 2	1				
012		231687-9	TORSION SPRING 17	1				
013		257742-9	SHOULDER SLEEVE 14	1				
014		213174-0	X RING 14	1				
015		911225-0	PAN HEAD SCREW M5X16	4				
016		418806-6	CAP	1				
017		961012-7	STOP RING E-6	1				
018		154551-6	GEAR HOUSING COVER COMPLETE	1				
019		961012-7	STOP RING E-6	1				
020		154502-9	SLIDER SUPPORT COMPLETE	1				
021		233038-2	COMPRESSION SPRING 5	2				
022		423343-7	SEAL PLATE 14	1				
023		214170-1	PLANE BEARING 14A	1				
024-1		154804-3	SLIDER COMPLETE	1			95391	
024-2		168410-8	SLIDER	1	O	95391	B5146	
024-3		168410-8	SLIDER	1	O	B5146	C1245	
024-4		161437-7	SLIDER	1	S	C1245		
025		345487-2	SLIDE PLATE	1				
026		317842-8	GEAR HOUSING	1				
027-1		154547-7	BEARING COMPLETE	1				
028		345486-4	PLATE B	1				
029-1		911225-0	PAN HEAD SCREW M5X16	2				
030		265530-0	HEX.SOCKET HEAD BOLT M5X8	3				
032		911225-0	PAN HEAD SCREW M5X16	3				
033		317844-4	BEARING BOX	1				
034		211101-1	BALL BEARING 6001LLB	1				
036		213726-7	O RING 62	1				
037		154549-3	TORQUE LIMITER COMPLETE	1				
038		266012-5	TAPPING SCREW 5X35	4			86680	
038-1		266373-3	TAPPING SCREW 5X35	4	O	86680		
039-1		265165-7	TORXSOCKET C.S.HEADSCREW M6X1	1				
040		345479-1	SHOE GUIDE	1				
041		232222-6	LEAF SPRING B	1				
042-1		911225-0	PAN HEAD SCREW M5X16	2				
043		345485-6	PLATE A	1				
044		265531-8	HEX.SOCKET HEAD BOLT M6X14	1				
045		154545-1	CRANK CAM COMPLETE	1			86913	
045-1		154545-1	CRANK CAM COMPLETE	1	O	86913		
046		257265-7	RING 21	1				
047		313121-2	COUNTER WEIGHT	1				
048		154546-9	CRANK BASE COMPLETE	1				
049		345489-8	GUIDE PLATE	1				
050		211251-2	BALL BEARING 6003LLB	1				
051		265148-7	TORX SOCKET HEAD SCREW M5X14	4				
052		212957-5	NEEDLE BEARING 710	1				
054		418991-5	STOPPER	1				
055		231309-1	COMPRESSION SPRING 5	1				
056		272247-8	LEVER 20	1				
057		213021-5	O RING 5	1				
058		213021-5	O RING 5	1				
059		413095-8	PLATE C	1				
060		421899-4	SEAL RING	1				

Interchange  
O : Yes  
X : No  
< : the new part can be substituted for the current.  
> : the current part can be substituted for the new.  
S : Interchangeable as a set.

<b>VN</b>	<b>VIETNAM</b>
-----------	----------------

### JR3070CT / RECIPRO SAW

Item	Sub	Parts No.	Parts Description	Qty	I/C	E/C No.	Close No.	Remark
061		268012-1	PIN 7	1				
062		162236-0	SHIFT BUTTON	1				
063		232221-8	LEAF SPRING A	1				
064		256158-5	PIN 3	1				
065		233345-3	COMPRESSION SPRING 6	1			C1245	
065-1		234381-2	COMPRESSION SPRING 6	1	S	C1245		
066		256492-3	SHOULDER PIN 5	1			C1245	
066-1		256569-4	SHOULDER PIN 5	1	S	C1245		
067		961052-5	RETAINING RING S-12	1				
068		253744-3	FLAT WASHER 12	1				
069		211131-2	BALL BEARING 6001DDW	1				
070		253744-3	FLAT WASHER 12	1				
071		285719-4	BEARING RETAINER A	1				
072		241863-7	FAN 70	1				
073		513603-6	ARMATURE ASS'Y 220-240V	1				
	D10		INC. 72,74,75					
074		681650-6	INSULATION WASHER	1				
075		210029-0	BALL BEARING 608ZZ	1				
076		266056-5	TAPPING SCREW 5X45	2			86680	
076-1		266466-6	TAPPING SCREW 5X45	2	O	86680	91941	
076-2		266056-5	TAPPING SCREW 5X45	2	O	91941		
077		418817-1	BAFFLE PLATE	1				
078		528803-5	FIELD ASS'Y 220-240V	1				
	C10	654020-2	RING TERMINAL	2				
	C20	654501-6	CONNECTOR P-1.25	2				
079		154498-4	MOTOR HOUSING COMPLETE	1				
	C10	643708-9	BRUSH HOLDER 5-11	2				
080-1		650222-8	SWITCH TG71ARS-1	1				
081		265995-6	TAPPING SCREW 4X18	5				
082		183933-5	HANDLE SET	1				
	D10		INC. 100					
083		691015-4	POWER SUPPLY CORD 0.75-2-2.5	1				
084		265995-6	TAPPING SCREW 4X18	2				
085		687053-2	STRAIN RELIEF	1			A7453	
085-1		687140-7	STRAIN RELIEF	1	O	A7453		
086		682573-1	CORD GUARD 10	1				
092		631651-4	CONTROLLER	1				
093		213261-5	O RING 17	1				
094		418905-4	DIAL	1				
095		418518-1	SLEEVE	1				
097		861231-4	JR3070CT NAME PLATE	1				
098-1		B-80151	CARBON BRUSH SET CB-303A	1			85070	
098-2		B-80379	CARBON BRUSH SET CB-303A	1	<	85070		
099		643750-0	BRUSH HOLDER CAP 7-11	2				
100		183933-5	HANDLE SET	1				
	D10		INC. 82					
101		125524-6	GEAR HOUSING COVER ASSEMBLY	1		Y06107	C1245	
	D10		INC. 3-14,16-20,22-25,27-29,			Y06107	C1245	
	D20		INC. 42,43,54-59,61-66			Y06107	C1245	
101-1		126912-0	GEAR HOUSING COVER ASSEMBLY	1	<	C1245	C8033	
	D10		INC. 3-14,16-20,22-25,27-29,			C1245	C8033	
	D20		INC. 42,43,54-59,61-66			C1245	C8033	
101-2		127403-4	GEAR HOUSING COVER ASSEMBLY	1	<	C8033		
	D10		INC. 3-14,16-20,22-25,27-29,			C8033		
	D20		INC. 42,43,54-59,61-66			C8033		
A01-1		824734-9	PLASTIC CARRYING CASE	1			A4241	
	C10	417724-5	LATCH	2			A4241	
	C20	819143-5	MAKITA LABEL	1			A4241	
A01-2		821621-3	PLASTIC CARRYING CASE	1	O	A4241		
	C10	162315-4	LATCH	2		A4241		
A02-1		B-05038	RECIPRO SAW BLADE FOR METAL	1				
A03		B-05044	RECIPRO SAW BLADE FOR PLYWOOD	1				
A04		B-05153	RECIPRO SAW BLADE FOR WOOD	1				

Interchange  
O : Yes  
X : No  
< : the new part can be substituted for the current.  
> : the current part can be substituted for the new.  
S : Interchangeable as a set.