



VN	VIETNAM
----	---------

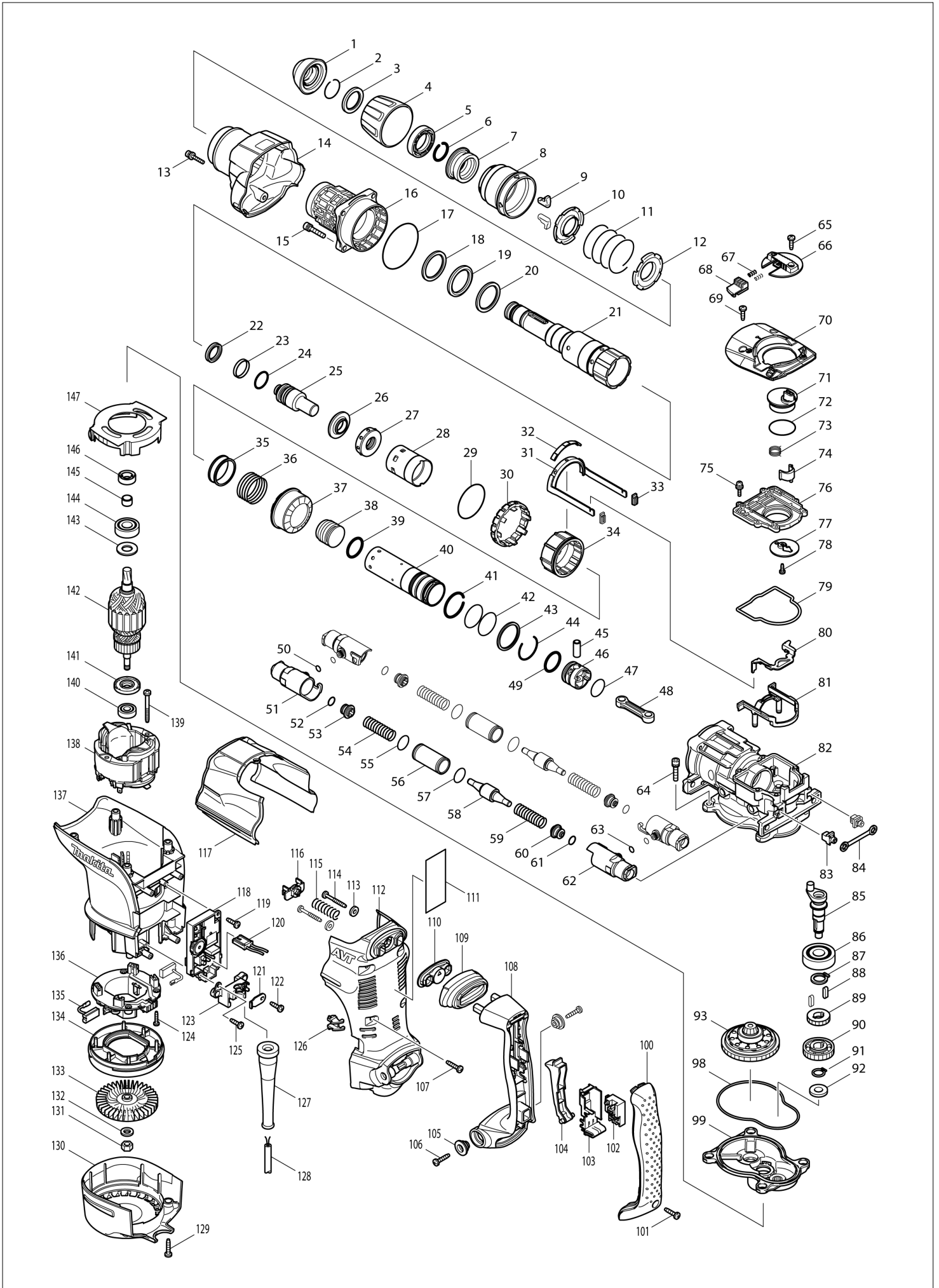
Diagram / Parts List

HR4511C

ROTARY HAMMER 45MM



(VN) HR4511C / ROTARY HAMMER 45MM



VN	VIETNAM
-----------	----------------

HR4511C / ROTARY HAMMER 45MM

Item	Sub	Parts No.	Parts Description	Qty	I/C	E/C No.	Close No.	Remark
001-1		286285-4	TOOL HOLDER CAP	1				
002		233948-3	RING SPRING 25	1				
003		257280-1	RING 28	1				
004		450064-8	CHUCK COVER	1				
005		419002-9	SPACER	1				
006		233948-3	RING SPRING 25	1				
007		324752-2	CHUCK RING	1				
008		450030-5	RELEASE COVER	1				
009		310178-4	TOOL RETAINER	2				
010		345804-6	SPRING GUIDE	1				
011		233496-2	COMPRESSION SPRING 49	1				
012		345804-6	SPRING GUIDE	1				
013		922148-7	HEX. SOCKET HEAD BOLT M4X25	1				
014		158300-3	BARREL COVER COMPLETE	1				
015		922353-6	HEX.SOCKET HEAD BOLT M6X30	4				
016-1		158576-2	BARREL COMPLETE	1				
	C10	213480-3	OIL SEAL 35	1				
	C20	214507-2	PLANE BEARING 36	1				
	C30	214601-0	PLANE BEARING 48	1				
	C40	233964-5	RING SPRING 50	1				
	C50	213604-1	O RING 50	1				
017		213754-2	O RING 71	1				
018		267357-4	FLAT WASHER 36	1				
019		262135-7	RUBBER RING 36	1				
020		267357-4	FLAT WASHER 36	1				
021		324872-2	TOOL HOLDER	1				
022		213980-3	X-RING 21	1				
023		213431-6	FLUORIDE RING 28	1				
024		213394-6	O RING 23	1				
025		324802-3	IMPACT BOLT	1				
026		324805-7	RING 19	1				
027		424032-7	RUBBER RING 20	1				
028		450024-0	SLIDE SLEEVE	1				
029		213656-2	O RING 53	1				
030		450031-3	LOCK SLEEVE	1				
031		165465-4	LINK ARM	1				
032		450032-1	LINK ARM GUIDE	1				
033		424024-6	SEAL PLATE	2				
034		324800-7	DRIVING SLEEVE	1				
035		331599-7	RING 38	1				
036		234024-6	COMPRESSION SPRING 39	1				
037		227526-9	STRAIGHT BEVEL GEAR 35	1				
038		324804-9	STRIKER	1				
039		213981-1	O-RING 27	1				
040		324803-1	CYLINDER 34	1				
041		233956-4	RING SPRING 37	1				
042		213460-9	O RING 35	2				
043		257283-5	RING 38	1				
044		233955-6	RING SPRING 36	1				
045		331598-9	PIPE 10	1				
046		450025-8	PISTON	1				
047		213407-3	O RING 26	1				
048		450026-6	CONNECTING ROD	1				
049		213981-1	O-RING 27	1				
050		213030-4	O RING 8	2				
051		318169-9	PIPE HOLDER	2				
052		213118-0	O RING 12	2				
053		450027-4	SPRING GUIDE	2				
054		234023-8	COMPRESSION SPRING 14	2				
055		213373-4	O RING 22	2				
056		331778-7	PIPE 20	2				
057		213373-4	O RING 22	2				
058-1		324806-5	COUNTER WEIGHT	2				
059		234023-8	COMPRESSION SPRING 14	2				
060		450027-4	SPRING GUIDE	2				

Interchange
O : Yes
X : No
< : the new part can be substituted for the current.
> : the current part can be substituted for the new.
S : Interchangeable as a set.

VN	VIETNAM
-----------	----------------

HR4511C / ROTARY HAMMER 45MM

Item	Sub	Parts No.	Parts Description	Qty	I/C	E/C No.	Close No.	Remark
061		213118-0	O RING 12	2				
062		318169-9	PIPE HOLDER	2				
063		213030-4	O RING 8	2				
064		922353-6	HEX.SOCKET HEAD BOLT M6X30	4				
065		266192-7	TAPPING SCREW 4X14	1				
066		419020-7	CHANGE LEVER	1				
067		233436-0	COMPRESSION SPRING 3	2				
068		419009-5	LOCK BUTTON	1				
069		266192-7	TAPPING SCREW 4X14	2				
070		318170-4	CRANK CAP COVER	1				
071-1		450687-2	CRANK LEVER	1				
072-1		213534-6	O RING 36	1			95754	
072-2		213687-1	O RING 36	1	<	95754	A1766	
072-3		213534-6	O RING 36	1	O	A1766	B9017	
072-4		213515-0	O RING 36	1	<	B9017		
073		233506-5	TORSION SPRING 16	1				
074		310207-3	LINK LEVER	1				
075		911133-5	PAN HEAD SCREW M4X18	6				
076		450034-7	CRANK CAP	1			A4417	
076-1		455525-3	CRANK CAP	1	<	A4417		
077		345778-1	RETAINER PLATE	1				
078-1		265014-8	+ PAN HEAD SCREW M4X12	1				
079		424034-3	SEAL RING	1				
080		345822-4	LINK PLATE	1				
081		450029-0	LINK PLATE GUIDE	1				
082		158297-6	CRANK HOUSING COMPLETE	1				
083		419008-7	FIX GUIDE	2				
084		423345-3	CUSHION PLATE	1				
085		324801-5	CRANK SHAFT	1				
086		211279-0	BALL BEARING 6303LLU	1				
087		961057-5	RETAINING RING S-17	1				
088		254220-0	KEY 5	2				
089		227181-7	SPUR GEAR 19	1				
090		226655-5	HELICAL GEAR 36	1				
091		961054-1	RETAINING RING S-14	1				
092		253180-3	FLAT WASHER 10	1				
093		125415-1	TORQUE LIMITER ASS'Y	1				
098		424033-5	SEAL RING	1				
099		158299-2	GEAR HOUSING COMPLETE	1				
100		419796-6	HANDLE COVER	1				
101		265995-6	TAPPING SCREW 4X18	1				
102		650567-4	SWITCH TG73B-1	1			96540	
102-1		650676-9	SWITCH C3PA-1111	1	<	96540		
103		154626-1	SWITCH HOLDER COMPLETE	1				
104		419025-7	SWITCH LEVER	1				
105		313124-6	SHOULDER SLEEVE 6	2				
106		266041-8	TAPPING SCREW 5X25	2				
107		266041-8	TAPPING SCREW 5X25	6				
108		419798-2	HANDLE	1				
109		424035-1	DUST COVER	1				
110		450028-2	DUST COVER SUPPORT	1				
111		864096-3	HR4511C NAME PLATE	1				
112		450038-9	HANDLE BASE	1				
113		253807-5	FLAT WASHER 5	2				
114		266211-9	TAPPING SCREW 5X40	2				
115		233434-4	COMPRESSION SPRING 11	1				
116		419013-4	SPRING GUIDE	1				
117		450036-3	CRANK HOUSING COVER	1				
118		631751-0	CONTROLLER	1				
119		266192-7	TAPPING SCREW 4X14	1			A2782	
119-1		266901-4	TAPPING SCREW 4X14	1	<	A2782		
120		638510-3	LEAD UNIT	1				
121		687169-3	STRAIN RELIEF	1				
122		266192-7	TAPPING SCREW 4X14	1				
123		419024-9	CORD CLAMP BASE	1				

Interchange
O : Yes
X : No
< : the new part can be substituted for the current.
> : the current part can be substituted for the new.
S : Interchangeable as a set.

VN	VIETNAM
-----------	----------------

HR4511C / ROTARY HAMMER 45MM

Item	Sub	Parts No.	Parts Description	Qty	I/C	E/C No.	Close No.	Remark
124		265995-6	TAPPING SCREW 4X18	4				
125		266192-7	TAPPING SCREW 4X14	1			A2782	
125-1		266901-4	TAPPING SCREW 4X14	1	<	A2782		
126		419774-6	LENS	1				
127		682560-0	CORD GUARD 10	1				
128-1		665647-3	POWER SUPPLY CORD 1.5-2-5.0	1			89426	
128-2		695137-2	POWER SUPPLY CORD 1.5-2-5.0	1	O	89426		
129		266041-8	TAPPING SCREW 5X25	2				
130		450035-5	REAR COVER	1				
131		252178-7	HEX. NUT M8-12	1				
132		253165-9	FLAT WASHER 8	1				
133		240016-5	FAN 90	1				
134		419782-7	FAN GUIDE	1				
135-1		194990-8	CARBON BRUSH CB-171	1			92823	
135-2		195845-0	CARBON BRUSH CB-175	1	<	92823		
136		638447-4	BRUSH HOLDER UNIT	1			A4072	
136-1		632D00-2	BRUSH HOLDER UNIT	1	<	A4072		
137		450041-0	MOTOR HOUSING	1				
138		636313-9	FIELD 220-240V	1				
139		266046-8	TAPPING SCREW 5X50	2				
140		210059-1	BALL BEARING 6000DDW	1				
141		681642-5	INSULATION WASHER	1				
142		517768-6	ARMATURE ASS'Y 220-240V	1				
	D10		INC. 140,141,145					
143		267025-9	FLAT WASHER 15	1				
144		211238-4	BALL BEARING 6202LLU	1				
145		331596-3	SLEEVE 12	1				
146		213231-4	OIL SEAL 15	1				
147		450033-9	BAFFLE PLATE	1				
155		331840-8	SHOULDER SLEEVE 19	1		80510		
156		819362-3	CLEAR LABEL	1		83872		
A01		158131-0	GRIP 36 COMPLETE	1			Y08283	
A01-1		135209-6	GRIP 36 ASS'Y	1	<	Y08283		
	C10	158131-0	GRIP 36 COMPLETE	1		Y08283		
	D10		INC. A06-A12			Y08283		
A02		158273-0	PLASTIC CARRYING CASE COMPLETE	1			89495	
	C10	163467-4	LATCH	2			89495	
	C20	816879-7	INDICATION LABEL	1			89495	
A02-1		140821-9	PLASTIC CARRYING CASE COMPLETE	1	O	89495	89537	
	C10	892400-6	INDICATION LABEL	1		89495	89537	
A02-2		140765-3	PLASTIC CARRYING CASE COMPLETE	1	O	89537	95046	
	C10	892400-6	INDICATION LABEL	1		89537	95046	
A02-3		196188-3	PLASTIC CASE SET	1	O	95046		
	C10	892400-6	INDICATION LABEL	1		95046		
A03-1		194683-7	GREASE VESSEL SET	1				
A04		134890-0	SIDE HANDLE 68 ASS'Y	1				
	C10	151769-0	SIDE HANDLE 68 COMPLETE	1				
	C20	252640-2	WING NUT M8	1				
	C30	265439-6	HEX. BOLT M8X150	1				
	C40	417002-3	SIDE HANDLE CAM	2				
	C50	417003-1	SIDE HANDLE	1				
A05		443122-7	CLOTH	1				
A06		265701-9	THUMB SCREW M6X14	1				
A07		266163-4	CUP SQUARE NECK BOLT M8X80	1				
A08		321248-4	DEPTH GAUGE	1				
A09		344491-8	GRIP SPRING 68	1				
A10		344492-6	PLATE	1				
A11		416299-1	SIDE GRIP BASE 68	1				
A12		931302-2	HEX. NUT M6	1				
A14		892062-0	HR4511C PLASTIC CASE LABEL	2		89533		

Interchange
O : Yes
X : No
< : the new part can be substituted for the current.
> : the current part can be substituted for the new.
S : Interchangeable as a set.