



VN	VIETNAM
----	---------

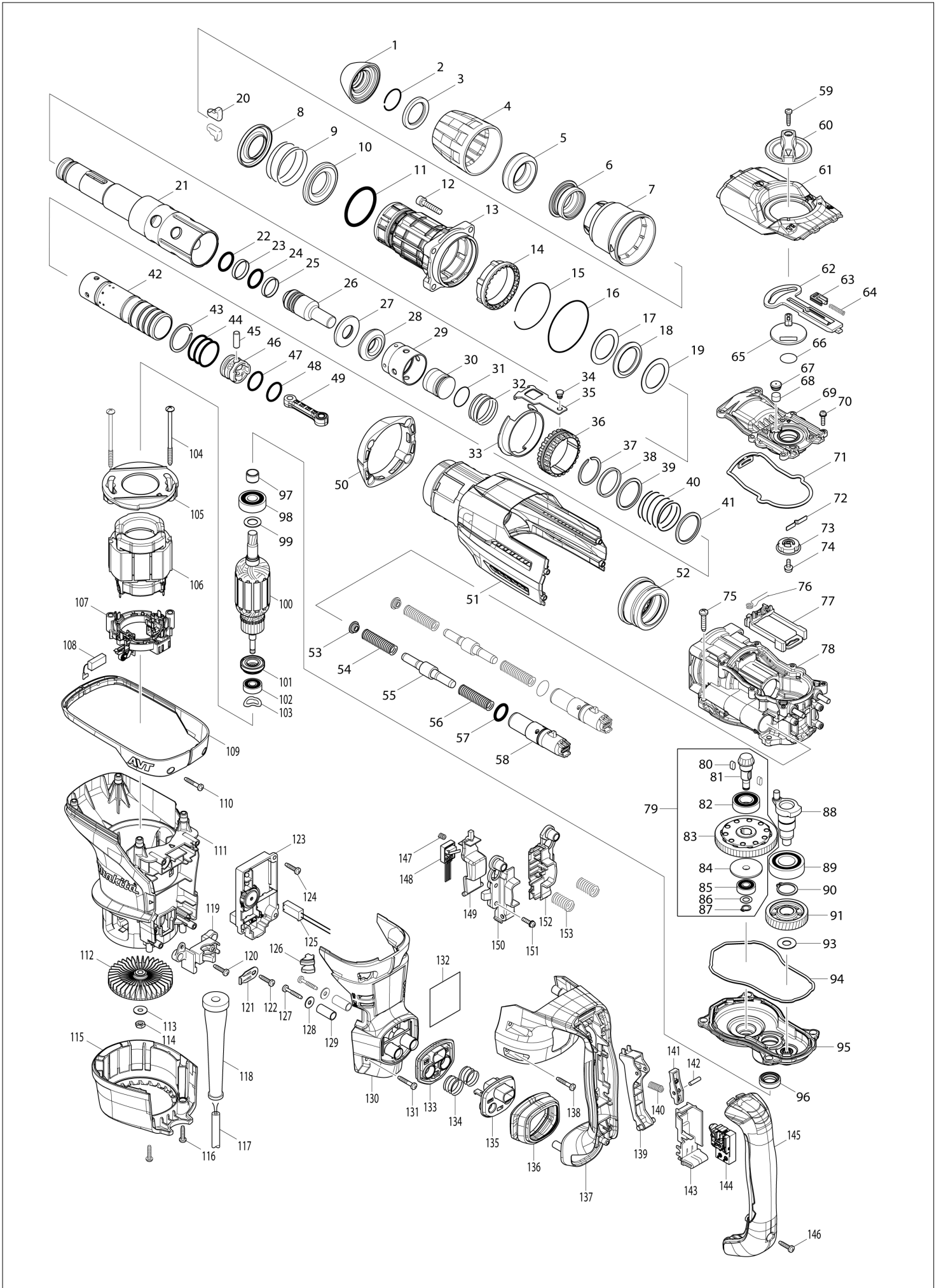
# Diagram / Parts List

**HR4013C**

**40MM ROTARY HAMMER**



# (VN) HR4013C / 40MM ROTARY HAMMER



<b>VN</b>	<b>VIETNAM</b>
-----------	----------------

### HR4013C / 40MM ROTARY HAMMER

Item	Sub	Parts No.	Parts Description	Qty	I/C	E/C No.	Close No.	Remark
001		286292-7	TOOL HOLDER CAP	1				
002		233948-3	RING SPRING 25	1				
003		257308-5	RING 28	1				
004		454330-5	CHUCK COVER	1				
005		262167-4	RUBBER RING 30	1				
006		326272-2	CHUCK RING	1				
007		454331-3	RELEASE COVER	1				
008		346670-4	SPRING GUIDE	1				
009		234288-2	COMPRESSION SPRING 46	1				
010		346670-4	SPRING GUIDE	1				
011		213615-6	O RING 46	1				
012		922351-0	HEX. SOCKET HEAD BOLT M6X30	4				
013		141956-9	BARREL COMPLETE	1				
	C10	213246-1	O-RING 38 SA1004	1				
	C20	213490-0	OIL SEAL 32	1				
	C30	213492-6	O-RING 32	1				
014		454337-1	LOCK SLEEVE	1				
015		234290-5	RING SPRING 59	1				
016		213707-1	O RING 65	1				
017		267469-3	FLAT WASHER 32	1				
018		262168-2	RUBBER RING 32	1				
019		267469-3	FLAT WASHER 32	1				
020		310257-8	TOOL RETAINER	2				
021		326268-3	TOOL HOLDER	1				
022		213317-4	O RING 20	1				
023		213392-0	FLUORIDE RING 25	1				
024		213317-4	O RING 20	1				
025		213392-0	FLUORIDE RING 25	1				
026		326269-1	IMPACT BOLT	1				
027		326274-8	RING 17	1				
028		262166-6	RUBBER RING 18	1				
029		454347-8	SLIDE SLEEVE	1				
030		326270-6	STRIKER	1				
031		213695-2	O-RING 22	1				
032		234289-0	COMPRESSION SPRING 33	1				
033		346673-8	GUIDE RING	1				
034		256548-2	FLAT FILLISTER HEAD PIN 6	1				
035		346671-2	LINK PLATE	1				
036		313255-1	DRIVING SLEEVE	1				
037		257991-8	RETAINING RING (EXT) WR-32.5	1				
038		257340-9	RING 33	1				
039		267470-8	FLAT WASHER 33	1				
040		234287-4	COMPRESSION SPRING 34	1				
041		267470-8	FLAT WASHER 33	1				
042		332063-1	CYLINDER 28.5	1				
043		257991-8	RETAINING RING (EXT) WR-32.5	1				
044		213406-5	O RING 30	3				
045		256197-5	PIN 7	1				
046		419004-5	PISTON	1				
047		213379-2	O RING 21	1			Y08534	
047-1		213695-2	O-RING 22	1	X	Y08534		
048		213695-2	O-RING 22	1			Y08534	
048-1		213379-2	O RING 21	1	X	Y08534		
049		454317-7	CONNECTING ROD	1				
050		424560-2	HOUSING CAP	1				
051		141957-7	HOUSING COVER A COMPLETE	1				
052		227613-4	SPIRAL BEVEL GEAR 26	1				
053		454342-8	SPRING PLATE	2				
054		234286-6	COMPRESSION SPRING 11	2				
055		326273-0	COUNTER WEIGHT	2				
056		234286-6	COMPRESSION SPRING 11	2				
057		213325-5	O RING 19	2				
058		142289-5	HOLDER COMPLETE	2				
059		265995-6	TAPPING SCREW 4X18	1				
060		454326-6	CHANGE LEVER	1				

Interchange  
O : Yes  
X : No  
< : the new part can be substituted for the current.  
> : the current part can be substituted for the new.  
S : Interchangeable as a set.

<b>VN</b>	<b>VIETNAM</b>
-----------	----------------

### HR4013C / 40MM ROTARY HAMMER

Item	Sub	Parts No.	Parts Description	Qty	I/C	E/C No.	Close No.	Remark
061		318988-3	CRANK CAP COVER	1				
062		454339-7	CONTROL PLATE	1				
063		454340-2	SLIDE PLATE	1				
064		234284-0	COMPRESSION SPRING 4	1				
065		454345-2	CRANK LEVER	1				
066		213262-3	O RING 18	1				
067		424556-3	FILTER CAP	1				
068		443182-9	FILTER	1				
069		454319-3	CRANK CAP	1				
070		911128-8	P.H.SCREW M4X16 WITH WR	6				
071		424559-7	SEAL RING B	1				
072		232280-2	LEAF SPRING	1				
073		454318-5	LINK LEVER	1				
074		911511-9	PAN HEAD SCREW M4X10	1				
075		266041-8	TAPPING SCREW 5X25	4				
076		233603-7	TORSION SPRING 7	1				
077		454338-9	LINK GUIDE	1				
078		141953-5	CRANK HOUSING A COMPLETE	1				
079		126290-8	TORQUE LIMITER ASSEMBLY	1				
	D10		INC. 80-87					
080		254239-9	KEY 4	2				
081		227612-6	SPIRAL BEVEL GEAR 7	1				
082		211232-6	BALL BEARING 6002LLU	1				
083		141959-3	TORQUE LIMITER COMPLETE	1				
084		324727-1	SHOULDER WASHER 8	1				
085		210005-4	BALL BEARING 608DDW	1				
086		253215-0	FLAT WASHER 8	1				
087		961004-6	RETAINING RING S-8	1				
088		326271-4	CRANK SHAFT	1				
089		211332-2	BALL BEARING 6004LLU	1				
090		961060-6	RETAINING RING S-20	1				
091		227772-4	HELICAL GEAR 37	1				
093		253180-3	FLAT WASHER 10	1				
094		424558-9	SEAL RING A	1				
095		141955-1	GEAR HOUSING COMPLETE	1				
096		213231-4	OIL SEAL 15	1				
097		331596-3	SLEEVE 12	1				
098		211137-0	BALL BEARING 6201LLU	1				
099		253744-3	FLAT WASHER 12	1				
100		513888-4	ARMATURE ASS'Y 220-240V	1				
	D10		INC. 97,98,99,101,102					
101		681650-6	INSULATION WASHER	1				
102		210005-4	BALL BEARING 608DDW	1				
103		267721-9	WAVE WASHER 15	1				
104		266568-8	TAPPING SCREW 5X80	2				
105		454329-0	BAFFLE PLATE	1				
106		625758-6	FIELD 220-240V	1				
107		632A84-2	BRUSH HOLDER UNIT	1			C9546	
107-1		632E31-7	BRUSH HOLDER UNIT	1	S	C9546		
108		195004-6	CARBON BRUSH SET CB-350	1			C9546	
108-1		197244-2	CARBON BRUSH CB-351	1	S	C9546		
109		454348-6	GUARD 40	1				
110		265999-8	TAPPING SCREW 4X25	2				
111		454316-9	MOTOR HOUSING	1				
112		240146-2	FAN 76	1				
113		253047-5	FLAT WASHER 6	1				
114		931303-0	HEX. NUT M6	1				
115		454328-2	REAR COVER	1				
116		265995-6	TAPPING SCREW 4X18	2				
117		691025-1	POWER SUPPLY CORD 0.75-2-5.0	1				
118		682560-0	CORD GUARD 10	1				
119		419024-9	CORD CLAMP BASE	1				
120		265995-6	TAPPING SCREW 4X18	1				
121		687169-3	STRAIN RELIEF	1				
122		265995-6	TAPPING SCREW 4X18	1				

Interchange  
O : Yes  
X : No  
< : the new part can be substituted for the current.  
> : the current part can be substituted for the new.  
S : Interchangeable as a set.

