



VN	VIETNAM
----	---------

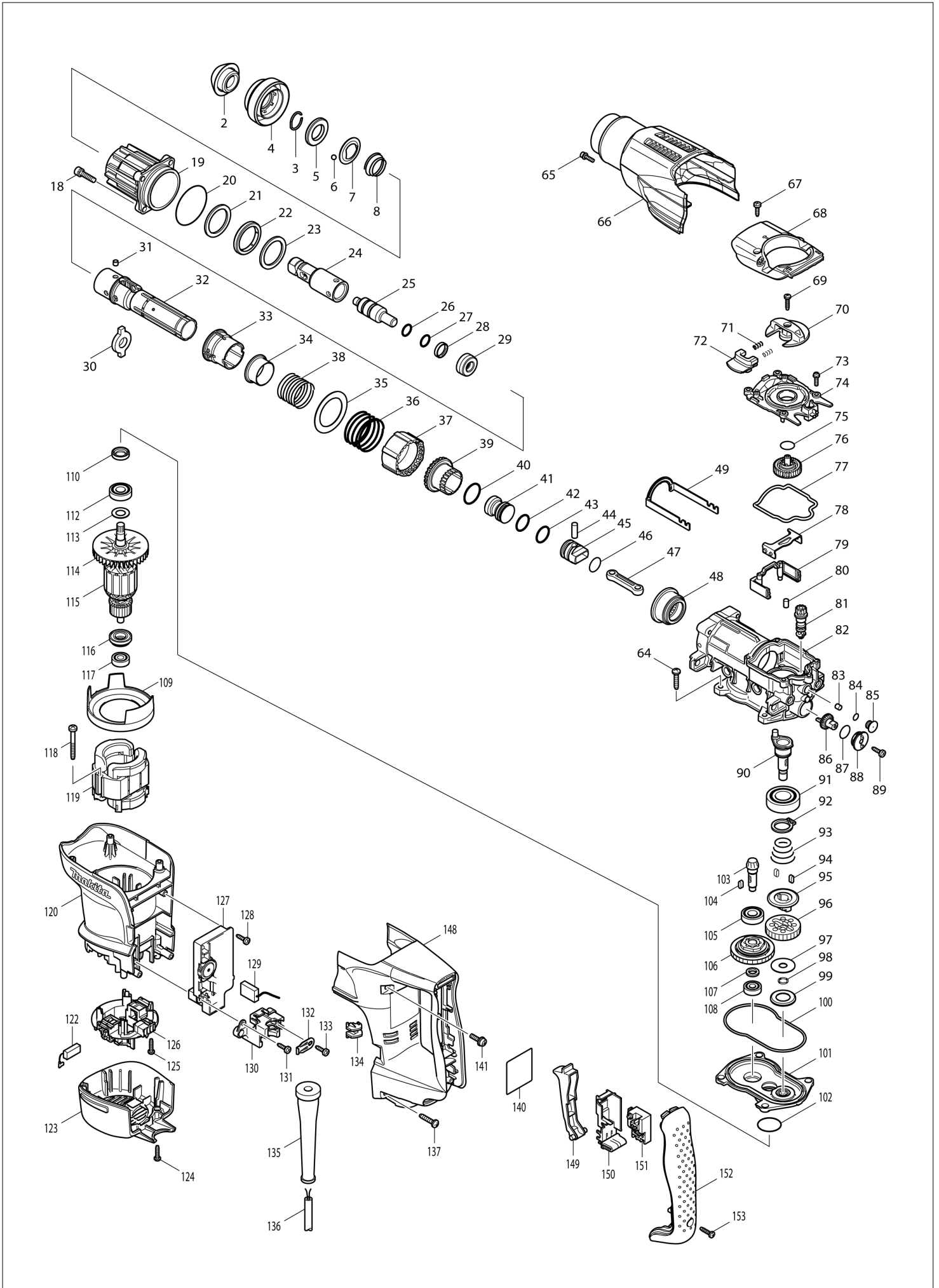
Diagram / Parts List

HR3200C

ROTARY HAMMER 32MM



(VN) HR3200C / ROTARY HAMMER 32MM



VN	VIETNAM
-----------	----------------

HR3200C / ROTARY HAMMER 32MM

Item	Sub	Parts No.	Parts Description	Qty	I/C	E/C No.	Close No.	Remark
002		286282-0	TOOL HOLDER CAP	1				
003		233940-9	RING SPRING 19	1				
004		450245-4	CHUCK COVER	1				
005		257288-5	RING 21	1				
006		216022-2	STEEL BALL 7.0	2				
007		345873-7	GUIDE WASHER	1				
008		234049-0	CONICAL COMPRESSIONSPRING22-32	1				
018		922341-3	HEX. SOCKET HEAD BOLT M6X25	4				
019		158533-0	BARREL COMPLETE	1				
	C10	213436-6	OIL SEAL 28	1				
	C20	213516-8	O RING 36	1			82473	
	C21	213142-3	O-RING 35	1	O	82473		
020		213656-2	O RING 53	1				
021		267810-0	FLAT WASHER 34	1				
022		262138-1	URETHAN RING 34	1				
023		267810-0	FLAT WASHER 34	1				
024		324840-5	TOOL HOLDER	1				
025		324849-7	IMPACT BOLT	1				
026		213228-3	O RING 15	1				
027		213228-3	O RING 15	1				
028		213321-3	FLUORO CARBON RESIN RING 20	1				
029		424062-8	RUBBER RING 13	1				
030		324838-2	SLIDE PLATE	1				
031		256266-2	PIN 6	4				
032		331794-9	CYLINDER 25	1				
033		450243-8	SLIDE SLEEVE	1				
034		331805-0	RING 29	1				
035		267360-5	FLAT WASHER 40	1				
036		234052-1	COMPRESSION SPRING 42	1				
037		450236-5	LOCK SLEEVE	1				
038		234050-5	COMPRESSION SPRING 34	1				
039		331795-7	DRIVING SLEEVE	1				
040		213434-0	O RING 26	1				
041		324858-6	STRIKER	1				
042		213283-5	O-RING 18	1				
043		213283-5	O-RING 18	1				
044		256087-2	PIN 7	1				
045		324918-4	PISTON	1				
046		213262-3	O RING 18	1				
047		450235-7	CONECTING ROD	1				
048		227531-6	SPIRAL BEVEL GEAR 37	1				
049		345867-2	LINK ARM	1				
064		266041-8	TAPPING SCREW 5X25	4				
065		922123-3	HEX. SOCKET HEAD BOLT M4X14	1				
066		450261-6	CRANK HOUSING COVER	1				
067		266192-7	TAPPING SCREW 4X14	2				
068		318201-9	CRANK CAP COVER	1				
069		265995-6	TAPPING SCREW 4X18	1				
070		450249-6	CHANGE LEVER	1				
071		233436-0	COMPRESSION SPRING 3	2				
072		450250-1	LOCK BUTTON	1				
073		911128-8	P.H.SCREW M4X16 WITH WR	5				
074		450241-2	CRANK CAP	1				
075		213223-3	O RING 16	1				
076		158437-6	SPUR GEAR 33 COMPLETE	1				
077		424064-4	SEAL RING B	1				
078		345868-0	LINK PLATE	1				
079		450247-0	AIR PIPE	1			94130	
079-1		453866-1	AIR PIPE	1	<	94130		
080		263005-3	RUBBER PIN 6	2				
081		450242-0	GEAR SHAFT	1			87177	
081-1		452126-8	GEAR SHAFT	1	S	87177		
082-1		158713-8	CRANK HOUSING COMPLETE	1			84281	
	C10	213579-4	O-RING 44	1			84281	
082-2		158713-8	CRANK HOUSING COMPLETE	1	O	84281		

Interchange
O : Yes
X : No
< : the new part can be substituted for the current.
> : the current part can be substituted for the new.
S : Interchangeable as a set.

VN	VIETNAM
-----------	----------------

HR3200C / ROTARY HAMMER 32MM

Item	Sub	Parts No.	Parts Description	Qty	I/C	E/C No.	Close No.	Remark
	C10	213579-4	O-RING 44	1		84281		
083		443138-2	FILTER	1				
084		213030-4	O RING 8	1				
085		450238-1	FILTER CAP	1				
086		450244-6	CRANK GEAR	1				
087		213223-3	O RING 16	1			87177	
087-1		213176-6	O RING 14	1	<	87177		
088		450237-3	CAP HOLDER	1				
089		266192-7	TAPPING SCREW 4X14	1				
090		324839-0	CRANK SHAFT	1				
091		211332-2	BALL BEARING 6004LLU	1				
092		961060-6	RETAINING RING S-20	1				
093		231991-6	CONICAL COMP. SPRING 21-31	1				
094		254239-9	KEY 4	2				
095		324848-9	CLUTCH	1				
096		227188-3	SPUR GEAR 33	1				
097		253197-6	FLAT WASHER 10	1				
098		961036-3	RETAINING RING WR-10	1				
099		345869-8	CUP WASHER 18	1				
100		424063-6	SEAL RING A	1				
101		158534-8	GEAR HOUSING COMPLETE	1				
102		213415-4	O RING 28	1				
103		227533-2	SPIRAL BEVEL GEAR 9	1				
104		254239-9	KEY 4	1				
105		210105-0	BALL BEARING 6001LLU	1				
106		125421-6	TORQUE LIMITER ASS'Y	1				
107		257291-6	RING 10	1				
108		210005-4	BALL BEARING 608DDW	1				
109		450251-9	BAFFLE PLATE	1				
110		213133-4	OIL SEAL 12	1				
112		210105-0	BALL BEARING 6001LLU	1				
113		253084-9	FLAT WASHER 12	1				
114		241863-7	FAN 70	1				
115		513748-0	ARMATURE ASS'Y 220-240V	1				
	D10		INC. 112-114,116,117					
116		681650-6	INSULATION WASHER	1				
117		210005-4	BALL BEARING 608DDW	1				
118		266056-5	TAPPING SCREW 5X45	2				
119		625813-4	FIELD 220-240V	1				
120		450252-7	MOTOR HOUSING	1				
122		194160-9	CARBON BRUSH CB-350	1			85070	
122-1		195004-6	CARBON BRUSH SET CB-350	1	<	85070		
123		450253-5	REAR COVER	1				
124		265995-6	TAPPING SCREW 4X18	2				
125		265995-6	TAPPING SCREW 4X18	4				
126		638519-5	BRUSH HOLDER UNIT	1				
127		631784-5	CONTROLLER	1				
128		266192-7	TAPPING SCREW 4X14	1			A2782	
128-1		266901-4	TAPPING SCREW 4X14	1	<	A2782		
129		638406-8	LEAD UNIT	1				
130		450246-2	CORD CLAMP BASE	1				
131		266192-7	TAPPING SCREW 4X14	1			A2782	
131-1		266901-4	TAPPING SCREW 4X14	1	<	A2782		
132		687169-3	STRAIN RELIEF	1				
133		266192-7	TAPPING SCREW 4X14	1				
134		450240-4	LENS	1				
135		682560-0	CORD GUARD 10	1				
136		691025-1	POWER SUPPLY CORD 0.75-2-5.0	1				
137		266041-8	TAPPING SCREW 5X25	2				
140		864532-9	HR3200C NAME PLATE	1				
141		911233-1	PAN HEAD SCREW M5X20	2				
148		450262-4	HANDLE	1				
149		419025-7	SWITCH LEVER	1				
150		154626-1	SWITCH HOLDER COMPLETE	1				
151		650567-4	SWITCH TG73B-1	1			96540	

Interchange
O : Yes
X : No
< : the new part can be substituted for the current.
> : the current part can be substituted for the new.
S : Interchangeable as a set.

