



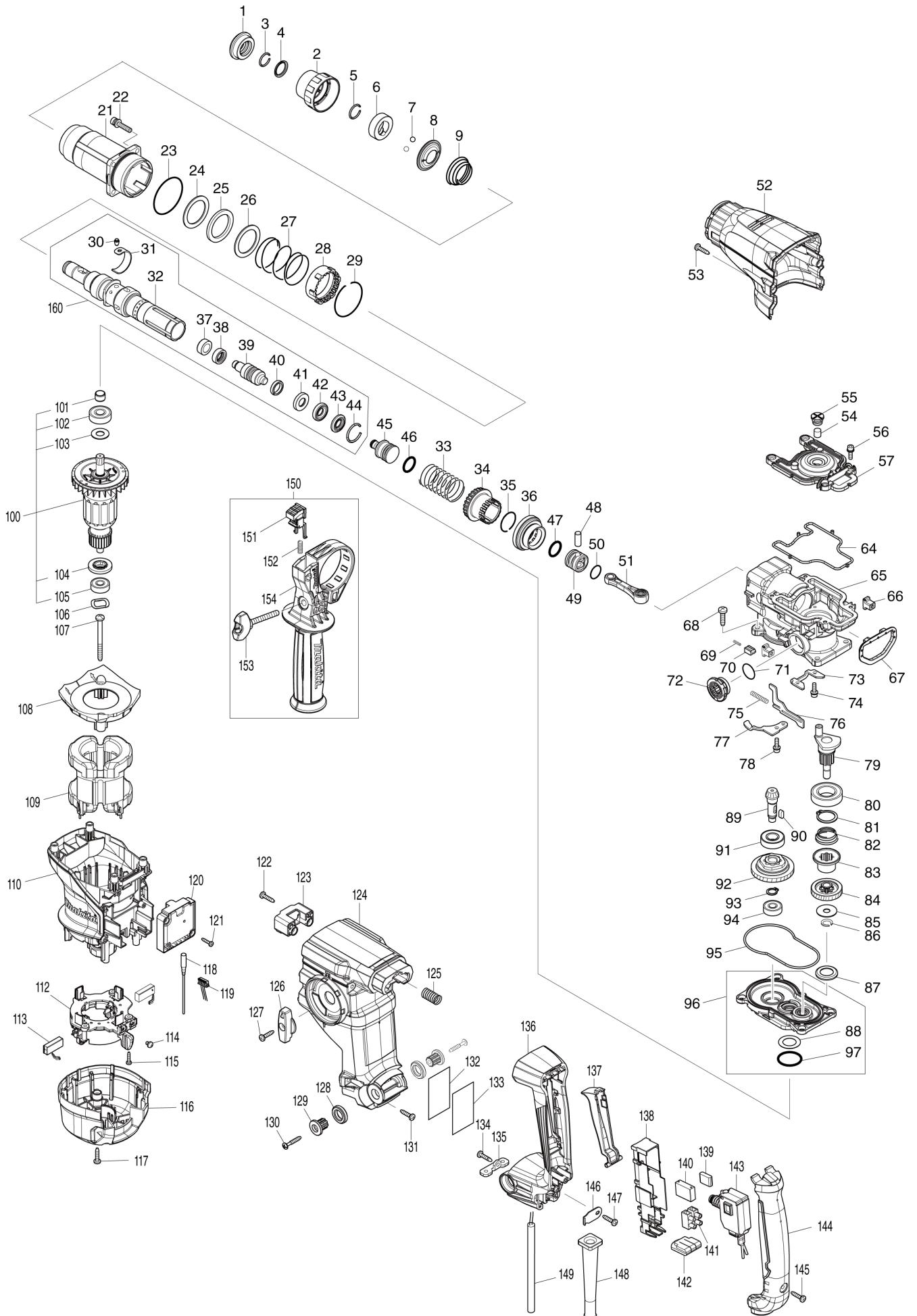
VN	VIETNAM
----	---------

# Diagram / Parts List

**HR3001C**

**30MM COMBINATION HAMMER**

# (VN) HR3001C / 30MM COMBINATION HAMMER



<b>VN</b>	<b>VIETNAM</b>
-----------	----------------

### HR3001C / 30MM COMBINATION HAMMER

Item	Sub	Parts No.	Parts Description	Qty	I/C	E/C No.	Close No.	Remark
001		286288-8	CAP 35	1				
002		459685-3	CHUCK COVER	1				
003		233989-9	RING SPRING 14	1				
004		346834-0	WASHER 16	1				
005		233992-0	RING SPRING 15	1				
006		327269-4	RING 17	1				
007		216022-2	STEEL BALL 7.0	2				
008		347553-1	GUIDE WASHER	1			DA452	
008-1		347944-6	GUIDE WASHER	1	<	DA452		
009		232503-8	CONICAL COMP. SPRING 21-34	1				
021		140J35-0	BARREL COMPLETE	1				
	C10	213636-8	OIL SEAL 25	1				
022		266793-1	HEX. S.H.B. M5X25 WITH WR	4				
023		213620-3	O RING 46	1				
024		267354-0	FLAT WASHER 31	1				
025		422493-5	RUBBER RING 31	1				
026		267354-0	FLAT WASHER 31	1				
027		232496-9	COMPRESSION SPRING 37	1				
028		419986-1	LOCK SLEEVE	1				
029		233952-2	RING SPRING 41	1				
030		256598-7	SHOULDER PIN 4	1				
031		347501-0	LEAF SPRING	1				
032		327277-5	TOOL HOLDER	1				
033		232497-7	COMPRESSION SPRING 27	1				
034		327276-7	DRIVING SLEEVE	1				
035		232501-2	RING SPRING 24	1				
036		226868-8	SPIRAL BEVEL GEAR 31	1				
037		327515-5	SLEEVE 11	1		D6673		
038		327516-3	RING 11	1		D6673		
039		140S89-1	IMPACT BOLT A COMPLETE	1				
040		213880-7	SEAL RING 12	1				
041		327268-6	RING 11	1				
042		424267-0	CUSHION RING 12	1				
043		327271-7	WASHER 11	1				
044		231987-7	RING SPRING 21	1				
045		327266-0	STRIKER	1			D6708	
045-1		327838-1	STRIKER	1	<	D6708		
046		213881-5	O RING 16	1				
047		213881-5	O RING 16	1				
048		268122-4	PIN 7	1				
049		319807-6	PISTON	1				
050		213226-7	O RING 16	1				
051		140J36-8	CONNECTING ROD COMPLETE	1				
052		459165-9	BARREL COVER	1				
053		266326-2	TAPPING SCREW 4X18	2				
054		443153-6	FELT	1				
055		459180-3	FILTER CAP	1				
056		922123-3	HEX. SOCKET HEAD BOLT M4X14	4				
057		319846-6	CRANK CAP	1				
064		459182-9	SEAL RING B	1				
065		140J33-4	CRANK HOUSING COMPLETE	1				
066		455165-7	FIX GUIDE	2				
067		422492-7	CUSHION	1				
068		266420-0	TAPPING SCREW 5X20	4			D8490	
068-1		266021-4	TAPPING SCREW 5X20	4	<	D8490		
069		232499-3	COMPRESSION SPRING 2	1				
070		310929-5	PUSH CORN	1				
071		213262-3	O RING 18	1				
072		459175-6	LINK LEVER	1				
073		347497-5	BEARING RETAINER A	1				
074		922123-3	HEX. SOCKET HEAD BOLT M4X14	2				
075		234019-9	COMPRESSION SPRING 4	1				
076		345814-3	LINK PLATE	1				
077		347498-3	GUIDE PLATE	1				
078		922123-3	HEX. SOCKET HEAD BOLT M4X14	1				

Interchange  
O : Yes  
X : No  
< : the new part can be substituted for the current.  
> : the current part can be substituted for the new.  
S : Interchangeable as a set.

<b>VN</b>	<b>VIETNAM</b>
-----------	----------------

### HR3001C / 30MM COMBINATION HAMMER

Item	Sub	Parts No.	Parts Description	Qty	I/C	E/C No.	Close No.	Remark
079		140M22-7	CRANK SHAFT COMPLETE	1				
080		211323-3	BALL BEARING 6904LLU	1				
081		961060-6	RETAINING RING S-20	1				
082		232498-5	CONICAL COMP. SPRING 21-26	1				
083		327273-3	CLUTCH	1				
084		226869-6	HELICAL GEAR 31	1				
085		267353-2	FLAT WASHER 8	1				
086		961034-7	RETAINING RING	1				
087		345818-5	CUP WASHER 16	1				
088		253749-3	FLAT WASHER 16	1				
089		226867-0	SPIRAL BEVEL GEAR 8	1				
090		254239-9	KEY 4	1				
091		211131-2	BALL BEARING 6001DDW	1				
092		125386-2	TORQUE LIMITER ASS'Y	1				
093		961006-2	RETAINING RING S-10	1				
094		210005-4	BALL BEARING 608DDW	1				
095		459181-1	SEAL RING A	1				
096		136304-5	GEAR HOUSING ASS'Y	1				
	D10		INC. 88,97					
097		213445-5	O-RING 26	1				
100		515528-0	ARMATURE ASS'Y 220-240V	1				
	D10		INC. 101-105					
101		331775-3	SLEEVE 10	1				
102		211097-6	BALL BEARING 6000LLB	1				
103		253171-4	FLAT WASHER 10	1				
104		681644-1	INSULATION WASHER	1				
105		210005-4	BALL BEARING 608DDW	1				
106		267804-5	WAVE WASHER 15	1				
107		266329-6	TAPPING SCREW 5X60	2				
108		459172-2	BAFFLE PLATE	1				
109		621898-8	FIELD	1				
110		459160-9	MOTOR HOUSING	1				
112		632N59-9	BRUSH HOLDER UNIT	1				
113		B-80329	CARBON BRUSH SET CB-153A	1				
114		652044-2	+BIND SCREW M3.5X5.0	2				
115		266404-8	TAPPING SCREW BIND 3X14	3				
116		459168-3	REAR COVER	1				
117		266326-2	TAPPING SCREW 4X18	4				
118		632P88-4	LEAD UNIT	1				
119		632P89-2	LEAD UNIT	1				
120		620C42-2	CONTROLLER	1				
121		266404-8	TAPPING SCREW BIND 3X14	2				
122		266326-2	TAPPING SCREW 4X18	2				
123		140M21-9	HANDLE STOPPER COMPLETE	1				
	C10	263005-3	RUBBER PIN 6	2				
124		459163-3	HANDLE BASE	1				
125		232500-4	COMPRESSION SPRING 10	1				
126		459174-8	CHANGE LEVER	1				
127		266326-2	TAPPING SCREW 4X18	1				
128		459184-5	CUSHION RING 12	2				
129		459176-4	SHOULDER SLEEVE 5	2				
130		266459-3	TAPPING SCREW 5X25	2			D8490	
130-1		266041-8	TAPPING SCREW 5X25	2	<	D8490		
131		266326-2	TAPPING SCREW 4X18	4				
132		856W05-4	HR3001C NAME PLATE	1				
133		818U61-0	CLEAR LABEL	1				
134		266326-2	TAPPING SCREW 4X18	1				
135		347502-8	LOCK PLATE	1				
136		459164-1	HANDLE	1				
137		459177-2	SWITCH LEVER	1				
138		459178-0	SWITCH HOLDER	1				
141		654531-7	TERMINAL BLOCK 2P	1				
142		424031-9	SPONGE SHEET	1				
143		651385-3	SWITCH C3JW-A1B-PA7	1				
144		459166-7	HANDLE COVER	1				

Interchange  
O : Yes  
X : No  
< : the new part can be substituted for the current.  
> : the current part can be substituted for the new.  
S : Interchangeable as a set.

