



| | |
|----|---------|
| VN | VIETNAM |
|----|---------|

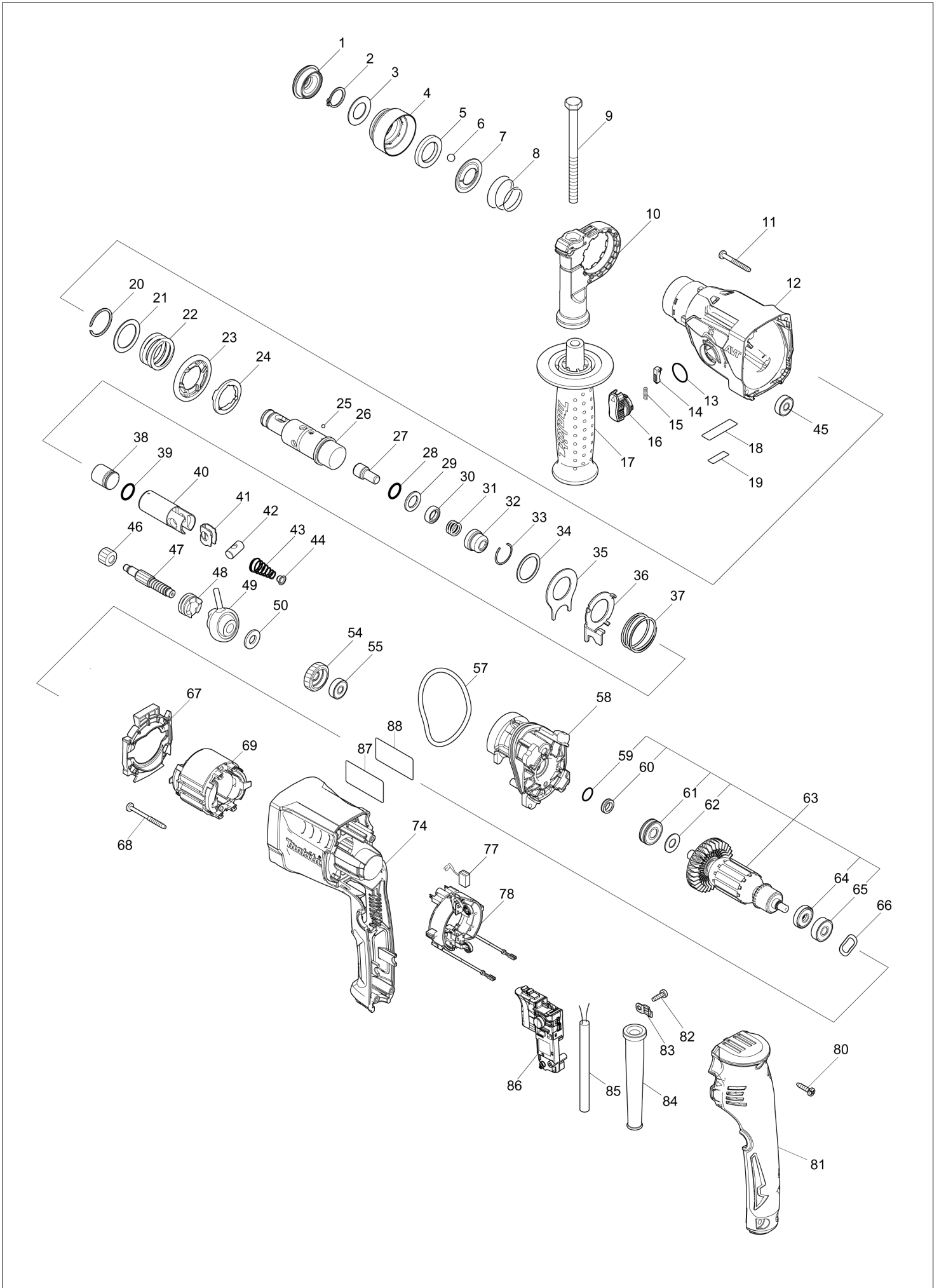
Diagram / Parts List

HR1840

18MM ROTARY HAMMER



(VN) HR1840 / 18MM ROTARY HAMMER



| | |
|-----------|----------------|
| VN | VIETNAM |
|-----------|----------------|

HR1840 / 18MM ROTARY HAMMER

| Item | Sub | Parts No. | Parts Description | Qty | I/C | E/C No. | Close No. | Remark |
|-------|-----|-----------|----------------------------|-----|-----|---------|-----------|--------|
| 001 | | 286037-3 | CAP 34 | 1 | | | | |
| 002 | | 961057-5 | RETAINING RING S-17 | 1 | | | | |
| 003 | | 253377-4 | FLAT WASHER 17 | 1 | | | | |
| 004 | | 457214-6 | CHUCK COVER | 1 | | | | |
| 005 | | 257416-2 | RING 21 | 1 | | | | |
| 006 | | 216022-2 | STEEL BALL 7.0 | 2 | | | | |
| 007 | | 346177-0 | GUIDE WASHER | 1 | | | | |
| 008 | | 232347-6 | CONICAL COMP. SPRING 21-29 | 1 | | | | |
| 009 | | 921923-8 | HEX. BOLT M8X120 | 1 | | | | |
| 010 | | 417911-6 | GRIP BASE | 1 | | | | |
| 011 | | 266053-1 | TAPPING SCREW 4X35 | 4 | | | | |
| 012 | | 144272-8 | GEAR HOUSING COMPLETE | 1 | | | | |
| | C10 | 213636-8 | OIL SEAL 25 | 1 | | | | |
| | C20 | 211375-4 | BALL BEARING 6805LLB | 1 | | | | |
| 013 | | 213278-8 | O RING 17 | 1 | | | | |
| 014 | | 161568-2 | LOCK BUTTON COMPLETE | 1 | | | | |
| 015 | | 232344-2 | COMPRESSION SPRING 3 | 1 | | | | |
| 016 | | 161569-0 | CHANGE LEVER COMPLETE | 1 | | | | |
| 017 | | 158057-6 | GRIP 36 COMPLETE | 1 | | | | |
| | C10 | 931402-8 | HEX. NUT M8 | 1 | | | | |
| 018 | | 457356-6 | PLATE | 1 | | | | |
| 019 | | 853K43-5 | HR1840 SERIAL NO. LABEL | 1 | | | | |
| 020 | | 961135-1 | RETAINING(EXT) WR-25 | 1 | | | C9610 | |
| 020-1 | | 347555-7 | SPIRAL RETAINING RING 25 | 1 | O | C9610 | | |
| 021 | | 267304-5 | FLAT WASHER 25 | 1 | | | | |
| 022 | | 232360-4 | COMPRESSION SPRING 25 | 1 | | | | |
| 023 | | 221494-8 | SPUR GEAR 44 | 1 | | | | |
| 024 | | 327039-1 | DRIVING FLANGE | 1 | | | | |
| 025 | | 216019-1 | STEEL BALL 3 | 3 | | | | |
| 026 | | 326886-7 | TOOL HOLDER | 1 | | | | |
| 027 | | 326887-5 | IMPACT BOLT | 1 | | | | |
| 028 | | 213117-2 | O RING 11 | 1 | | | | |
| 029 | | 253380-5 | FLAT WASHER 13 | 1 | | | | |
| 030 | | 326888-3 | RING 10 | 1 | | | | |
| 031 | | 232357-3 | COMPRESSION SPRING 10A | 1 | | | | |
| 032 | | 327038-3 | CUP SLEEVE | 1 | | | | |
| 033 | | 233942-5 | RING SPRING 22 | 1 | | | | |
| 034 | | 267175-0 | FLAT WASHER 24 | 1 | | | | |
| 035 | | 345681-6 | JOINT PLATE | 1 | | | | |
| 036 | | 347128-6 | CHANGE PLATE | 1 | | | | |
| 037 | | 233458-0 | COMPRESSION SPRING 32 | 1 | | | | |
| 038 | | 326889-1 | STRIKER | 1 | | | | |
| 039 | | 213832-8 | O-RING 13 | 1 | | | | |
| 040 | | 326890-6 | PISTON CYLINDER | 1 | | | | |
| 041 | | 347127-8 | GUIDE PLATE | 1 | | | | |
| 042 | | 324612-8 | PISTON JOINT | 1 | | | | |
| 043 | | 232361-2 | CONICAL COMP. SPRING 6-13 | 1 | | | | |
| 044 | | 347130-9 | SPRING GUIDE | 1 | | | | |
| 045 | | 211016-2 | BALL BEARING 626LLB | 1 | | | | |
| 046 | | 221495-6 | SPUR GEAR 12 | 1 | | | | |
| 047 | | 326892-2 | CAM SHAFT | 1 | | | | |
| 048 | | 326891-4 | CLUCTH CAM | 1 | | | | |
| 049 | | 219029-7 | SWASH BEARING 9 | 1 | | | | |
| 050 | | 253383-9 | FLAT WASHER 9 | 1 | | | | |
| 054 | | 221496-4 | HELICAL GEAR 23 | 1 | | | | |
| 055 | | 211016-2 | BALL BEARING 626LLB | 1 | | | | |
| 057 | | 213833-6 | O-RING 60 | 1 | | | | |
| 058 | | 144270-2 | INNER HOUSING COMPLETE | 1 | | | | |
| 059 | | 213118-0 | O RING 12 | 1 | | | | |
| 060 | | 326893-0 | RING 9 | 1 | | | | |
| 061 | | 210162-8 | BALL BEARING 609LLU | 1 | | | | |
| 062 | | 267231-6 | FLAT WASHER 9 | 1 | | | | |
| 063 | | 513988-0 | ARMATURE ASS'Y 220V | 1 | | | | |
| | D10 | | INC. 59-62,64,65 | | | | | |
| 064 | | 681670-0 | INSULATION WASHER | 1 | | | | |

Interchange
O : Yes
X : No
< : the new part can be substituted for the current.
> : the current part can be substituted for the new.
S : Interchangeable as a set.

