



VN	VIETNAM
----	---------

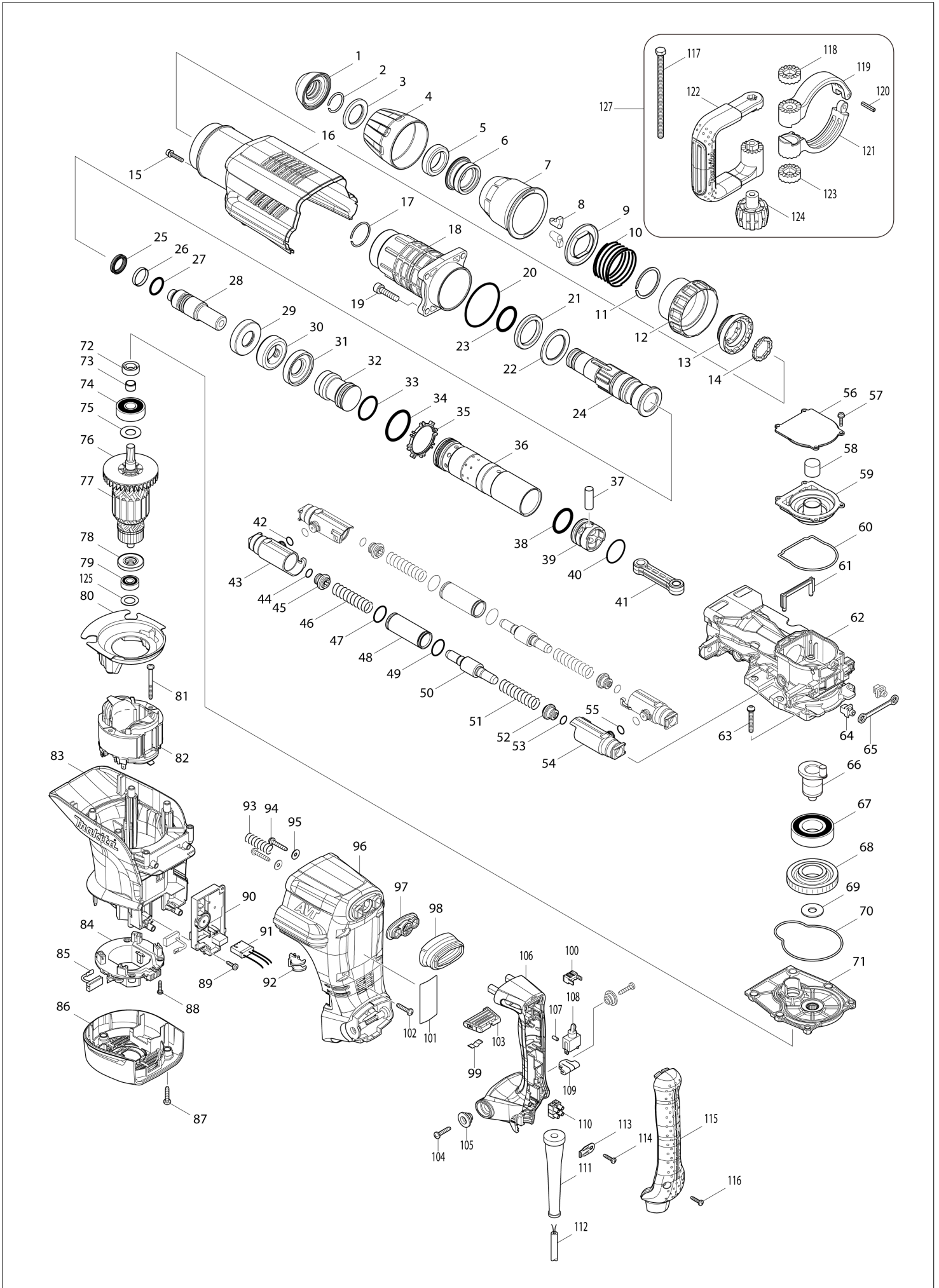
# Diagram / Parts List

**HM1213C**

**DEMOLITION HAMMER**



# (VN) HM1213C / DEMOLITION HAMMER



<b>VN</b>	<b>VIETNAM</b>
-----------	----------------

### HM1213C / DEMOLITION HAMMER

Item	Sub	Parts No.	Parts Description	Qty	I/C	E/C No.	Close No.	Remark
001		424165-8	TOOL HOLDER CAP	1				
002		233973-4	RING SPRING 26	1				
003		267386-7	FLAT WASHER 30	1				
004		450894-7	CHUCK COVER	1				
005		262147-0	RUBBER RING 30	1				
006		324987-5	CHUCK RING	1				
007		450895-5	RELEASE COVER	1				
008		310279-8	TOOL RETAINER	2				
009		346015-6	SPRING GUIDE	1				
010		234086-4	COMPRESSION SPRING 56	1				
011		961232-3	RETAINING RING WR-45	1				
012		450893-9	CHANGE RING COVER	1				
013		324969-7	CHANGE RING	1				
014		324988-3	LOCK RING	1				
015		922243-3	HEX. SOCKET HEAD BOLT M5X25	1				
016		450902-4	HOUSING COVER	1				
017		233970-0	RING SPRING 35	1				
018		158858-2	BARREL COMPLETE	1				
019		922456-6	HEX. SOCKET HEAD BOLT M8X35	4				
020		213720-9	O RING 67	1				
021		262148-8	RUBBER RING 39	1				
022		267387-5	FLAT WASHER 39	1				
023		213079-4	O-RING 35.5	1				
024		324985-9	TOOL HOLDER	1				
025		213980-3	X-RING 21	1				
026		213431-6	FLUORIDE RING 28	1				
027		213394-6	O RING 23	1				
028		324990-6	IMPACT BOLT	1				
029		324993-0	SHOULDER SLEEVE	1				
030		262149-6	RUBBER RING 24	1				
031		324993-0	SHOULDER SLEEVE	1				
032-1		326002-1	STRIKER	1				
033		213499-2	O-RING 31.5	1				
034		213581-7	O-RING 44	1				
035		450889-0	ONE WAY VALVE GUIDE	1				
036-1		331925-0	CYLINDER 40	1				
037		268121-6	PIN 12	1				
038		213499-2	O-RING 31.5	1				
039		450961-8	PISTON	1				
040		213149-9	O RING 35	1				
041		450890-5	CONNECTING ROD	1				
042		213118-0	O RING 12	2				
043		318361-7	PIPE HOLDER	2				
044		213118-0	O RING 12	2				
045		419773-8	SPRING GUIDE	2				
046		234085-6	COMPRESSION SPRING 15	2				
047		213953-6	O RING 24	2				
048		331745-2	PIPE 22	2				
049		213953-6	O RING 24	2				
050		324992-2	COUNTER WEIGHT	2				
051		234085-6	COMPRESSION SPRING 15	2				
052		419773-8	SPRING GUIDE	2				
053		213118-0	O RING 12	2				
054		318361-7	PIPE HOLDER	2				
055		213118-0	O RING 12	2				
056		450899-7	CRANK CAP COVER	1				
057		911133-5	PAN HEAD SCREW M4X18	4				
058		443127-7	FILTER	1				
059		450898-9	CRANK CAP	1				
060		424166-6	SEAL RING	1				
061		450892-1	AIR PIPE	1				
062		318363-3	CRANK HOUSING	1				
063		266482-8	H.S.BUTTON HEAD SCREW M6X40	6				
064		419008-7	FIX GUIDE	2				
065		423366-5	CUSHION PLATE	1				

Interchange  
O : Yes  
X : No  
< : the new part can be substituted for the current.  
> : the current part can be substituted for the new.  
S : Interchangeable as a set.

<b>VN</b>	<b>VIETNAM</b>
-----------	----------------

### HM1213C / DEMOLITION HAMMER

Item	Sub	Parts No.	Parts Description	Qty	I/C	E/C No.	Close No.	Remark
066		324994-8	CRANK SHAFT	1				
067		211424-7	BALL BEARING 6206LLU	1				
068		226691-1	HELICAL GEAR 57	1				
069		267398-0	FLAT WASHER 12	1				
070		424167-4	SEAL RING	1				
071		158859-0	GEAR HOUSING COMPLETE	1				
072		213231-4	OIL SEAL 15	1				
073		331596-3	SLEEVE 12	1				
074		211249-9	BALL BEARING 6302LLU	1				
075		267397-2	FLAT WASHER 15	1				
076		240003-4	FAN 80	1				
077		517818-7	ARMATURE ASS'Y 220-240V	1				
	D10		INC. 73-76,78,79					
078		681642-5	INSULATION WASHER	1				
079-1		211289-7	BALL BEARING 6000DDW	1				
080		450900-8	BAFFLE PLATE	1				
081		266095-5	TAPPING SCREW 5X55	2				
082		636303-2	FIELD 220-240V	1				
083		450904-0	MOTOR HOUSING	1				
084		638447-4	BRUSH HOLDER UNIT	1			A4072	
084-1		632D00-2	BRUSH HOLDER UNIT	1	<	A4072		
085-1		194990-8	CARBON BRUSH CB-171	1			92823	
085-2		195845-0	CARBON BRUSH CB-175	1	<	92823		
086		450901-6	REAR COVER	1				
087		266041-8	TAPPING SCREW 5X25	3				
088		265995-6	TAPPING SCREW 4X18	4				
089		266192-7	TAPPING SCREW 4X14	2			A2782	
089-1		266300-0	TAPPING SCREW 4X18	2	<	A2782	C5745	
089-2		265678-8	TAPPING SCREW 4X18	2	O	C5745		
090		631871-0	CONTROLLER	1				
091		638650-7	LEAD UNIT	1				
092		419010-0	LENS	1				
093		233434-4	COMPRESSION SPRING 11	1				
094		266173-1	TAPPING SCREW 5X30	2				
095		253807-5	FLAT WASHER 5	2				
096		450905-8	HANDLE BASE	1				
097		419783-5	DUST COVER SUPPORT	1				
098		424001-8	DUST COVER	1				
099		232209-8	LEAF SPRING	1				
100		450891-3	LEVER STOPPER	1				
101		866631-3	HM1213C NAME PLATE	1			Z21272	
101-1		814S58-5	HM1213C NAME PLATE	1	<	Z21272		
102		266041-8	TAPPING SCREW 5X25	6				
103		450896-3	SLIDE LEVER	1				
104		266041-8	TAPPING SCREW 5X25	2				
105		313124-6	SHOULDER SLEEVE 6	2			D3151	
105-1		450352-3	SHOULDER SLEEVE 6	2	O	D3151		
106		450906-6	HANDLE	1				
107		263027-3	RUBBER PIN 4	1				
108		651423-1	SWITCH	1				
109		423379-6	SPONGE SHEET	1				
110		654531-7	TERMINAL BLOCK 2P	1				
111		682560-0	CORD GUARD 10	1				
112		691025-1	POWER SUPPLY CORD 0.75-2-5.0	1				
113		687169-3	STRAIN RELIEF	1				
114		265995-6	TAPPING SCREW 4X18	1				
115		450908-2	HANDLE COVER	1				
116		265995-6	TAPPING SCREW 4X18	2				
117		265439-6	HEX. BOLT M8X150	1				
118		417002-3	SIDE HANDLE CAM	1				
119		318505-9	SIDE HANDLE BASE 82A	1				
120		951166-8	SPRING PIN 5-24	1				
121		318506-7	SIDE HANDLE BASE 82B	1				
122		417003-1	SIDE HANDLE	1				
123		417002-3	SIDE HANDLE CAM	1				

Interchange  
O : Yes  
X : No  
< : the new part can be substituted for the current.  
> : the current part can be substituted for the new.  
S : Interchangeable as a set.

