

Slide Switch Type



GA021G

Wheel Diameter	100 mm (4")
Hole Diameter	16 mm (5/8")
No Load Speed (RPM)	3,000 - 8,500
Vibration Level Surface Grinding w/ Normal Side Grip:	5.0 m/s ²
Disc Sanding w/ Normal Side Grip:	2.5 m/s ² or less
Sound Pressure Level / Sound Power Level	81 dB(A) / 92 dB(A)
Dimensions (L x W x H) with / BL4025:	413x117x150 mm (16-1/4"x4-5/8"x5-7/8")
with / BL4040:	425x117x162 mm (16-3/4"x4-5/8"x6-3/8")
Net weight	2.8 - 3.4 kg (6.2 - 7.5 lbs.)

GA021GM201: 2 battery 4.0 Ah, fast charger, connector plastic case
GA021GZ: Battery & charger are sold separately

GA023G

Wheel Diameter	125 mm (5")
Hole Diameter	22.23 mm (7/8")
No Load Speed (RPM)	3,000 - 8,500
Vibration Level Surface Grinding w/ Normal Side Grip:	6.5 m/s ²
Disc Sanding w/ Normal Side Grip:	2.5 m/s ²
Sound Pressure Level / Sound Power Level	81 dB(A) / 92 dB(A)
Dimensions (L x W x H) with / BL4025:	413x140x156 mm (16-1/4"x5-1/2"x6-1/8")
with / BL4040:	425x140x168 mm (16-3/4"x5-1/2"x6-5/8")
Net weight	3.0 - 4.4 kg (6.6 - 9.7 lbs.)

GA023GM201: 2 battery 4.0 Ah, fast charger, connector plastic case
GA023GZ: Battery & charger are sold separately

- Variable Speed
- Brake
- Soft Start
- Dust Collection
- Carrying Case

Standard equipment: Grip 36 (158237-4), grinding wheel 125mm WA36N (A-80656 / GA023G only), grinding wheel 100mm WA36N (A-80852 / GA021G only), lock nut wrench 20 (782420-7 / GA021G only), lock nut wrench 35 (782423-1 / GA023G only).

Paddle Switch Type



GA027G

Wheel Diameter	100 mm (4")
Hole Diameter	16 mm (5/8")
No Load Speed (RPM)	3,000 - 8,500
Vibration Level Surface Grinding w/ Normal Side Grip:	4.5 m/s ²
Disc Sanding w/ Normal Side Grip:	2.5 m/s ² or less
Sound Pressure Level / Sound Power Level	81 dB(A) / 92 dB(A)
Dimensions (L x W x H) with / BL4025:	413x117x150 mm (16-1/4"x4-5/8"x5-7/8")
with / BL4040:	425x117x162 mm (16-3/4"x4-5/8"x6-3/8")
Net weight	2.9 - 3.4 kg (6.4 - 7.5 lbs.)

GA027GM201: 2 battery 4.0 Ah, fast charger, connector plastic case
GA027GZ: Battery & charger are sold separately

GA029G

Wheel Diameter	125 mm (5")
Hole Diameter	22.23 mm (7/8")
No Load Speed (RPM)	3,000 - 8,500
Vibration Level Surface Grinding w/ Normal Side Grip:	6.0 m/s ²
Disc Sanding w/ Normal Side Grip:	3.0 m/s ²
Sound Pressure Level / Sound Power Level	82 dB(A) / 93 dB(A)
Dimensions (L x W x H) with / BL4025:	413x140x156 mm (16-1/4"x5-1/2"x6-1/8")
with / BL4040:	425x140x168 mm (16-3/4"x5-1/2"x6-5/8")
Net weight	3.0 - 4.5 kg (6.6 - 9.9 lbs.)

GA029GM201: 2 battery 4.0 Ah, fast charger, connector plastic case
GA029GZ: Battery & charger are sold separately

- Variable Speed
- Brake
- Soft Start
- Dust Collection
- Carrying Case

Standard equipment: Grip 36 (158237-4), grinding wheel 125mm WA36N (A-80656 / GA029G only), grinding wheel 100mm WA36N (A-80852 / GA027G only), lock nut wrench 20 (782420-7 / GA027G only), lock nut wrench 35 (782423-1 / GA029G only).

Product Comparison List

Model No.		No load speed (v/p)	Switch	AWS	BL motor	AFT	Brake	XPT	Anti-restart function
100mm	125mm								
GA021G NEW	GA023G NEW	3,000 - 8,500	Slide	●	●	●	●	●	●
GA003G	GA005G	8,500	Slide		●	●	●	●	●
GA027G NEW	GA029G NEW	3,000 - 8,500	Paddle	●	●	●	●	●	●
GA011G	GA013G	8,500	Paddle		●	●	●	●	●

The weight may differ depending on the attachment(s), including the battery cartridge. The lightest and heaviest combination, according to EPTA-Procedure 01/2014, are shown in the table. Items of standard equipment and specifications may vary by country or area.

MA-052023-1

CÔNG TY TNHH MAKITA VIỆT NAM

Kho 5/5, Block 16, 19L1-2 Đường số 3, KCN VSMP, P. Hòa Phú, TP. Thủ Đức, Bình Dương
ĐT: 0274 362 8338 - Fax: 0274 362 8339 - Website: www.makita.com.vn

CHI NHÁNH CTY TNHH MAKITA VN TẠI MIỀN BẮC
Khu 5, Số 1, Đường Số 5, KCN - BT - DV VSPP Bắc Ninh, P. Phú Châu, TP. Từ Sơn, T. Bắc Ninh.
ĐT: 0222 376 5942 Fax: 0222 376 5941

TRUNG TÂM DỊCH VỤ KHÁCH HÀNG CHI NHÁNH ĐÀ NẴNG
102 Triều Ni Vương, P. Hải Châu 2, Q. Hải Châu, TP. Đà Nẵng.
ĐT: 0236 352 5079 / 0236 352 5179 Fax: 0236 352 5478

TRUNG TÂM DỊCH VỤ KHÁCH HÀNG CHI NHÁNH HÀ NỘI
366 Vũ Văn Kiệt, Khu Vực 5, P. An Thọ, Q. Bình Thủy, TP. Cần Thơ.
ĐT: 0292 389 4358 Fax: 0292 389 4358

TRUNG TÂM DỊCH VỤ KHÁCH HÀNG CHI NHÁNH HẢI PHÒNG
Số 01 Lê Đức Thọ, Di An Hoàng Huy Riverside, P. Thượng Lý, Q. Hồng Bàng, TP. Hải Phòng.
ĐT: 0225 863 1529

TRUNG TÂM DỊCH VỤ KHÁCH HÀNG CHI NHÁNH HỒ CHÍ MINH
Số 12 Trịnh Văn Cấn, P. Cầu Ông Lãnh, Q. 1, TP. Hồ Chí Minh.
ĐT: 0283 821 5191



GA021G, GA022G, GA023G, GA027G, GA028G, GA029G



XGT
40V LI-ION
max

Switch on the tool



Vacuum cleaner is activated

AWS

Auto-start Wireless System

The wireless activation function enables clean and comfortable operation. By connecting a supported tool to the cleaner, you can run the cleaner automatically along with the switch operation of the tool.



about
40% UP

Cutting speed
Cutting depth: 20mm (concrete)

GA021G	140
18V Predecessor Model	100

Slow

Fast

Work amount on a full battery charge*1
Battery: BL4040

about **7m**
Cutting depth: 20mm

*1 The test results depend to a great extent on the test material etc.



Variable speed control dial
(3,000 - 8,500 RPM)

Matches the speed to your application.



	No load speed (RPM)	Cutting / Rough grinding	Grinding / Finish grinding	Rust removal / Paint removal	Stainless steel polishing
1	3,000				✓
2	4,500			✓	✓
3	6,000		✓	✓	✓
4	7,500		✓		
5	8,500	✓			

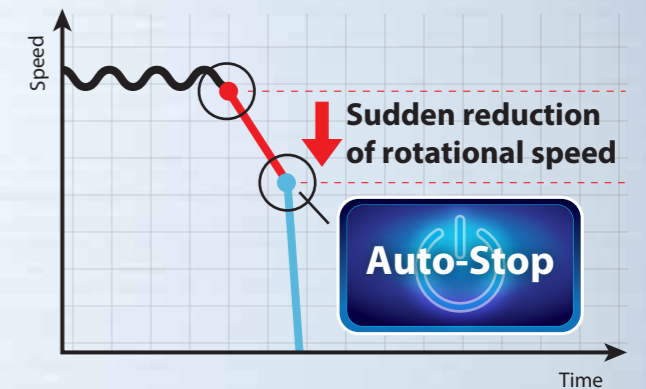
High durability

- Largest ball bearing supports the motor.
- New switch design to reduce contact weariness.



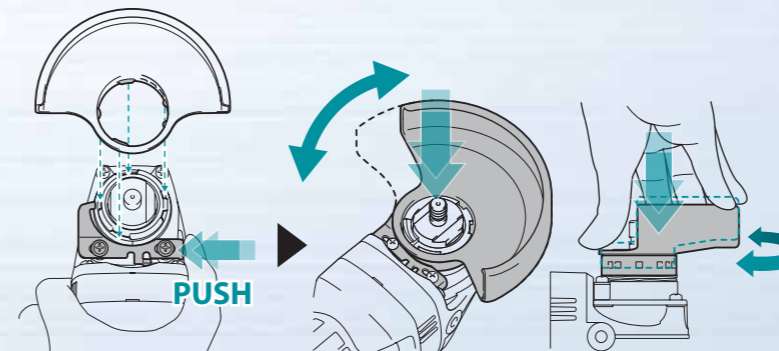
AFT Active Feedback sensing Technology

Shuts down the tool to protect the user, if the rotation speed suddenly slows down.



New toolless wheel cover (Slide lever style)

allows for fast and easy angle adjustment and installation / removal of wheel cover.



Electric brake
maximizes productivity and increases safety for operator
(GA021G/GA022G/GA023G/GA027G/GA028G/GA029G)



Extreme Protection Technology
is engineered for improved dust and water resistance



Accessories

Dust collection wheel guard

for offset diamond wheel

for diamond wheel



Part No.	Size	Type
191F81-2	125mm	for offset diamond wheel
191G06-2	125mm	for diamond wheel



Wheel cover

for cut-off wheel



Part No.	Size
162555-4	100mm
162556-2	115mm
162557-0/140N45-1	125mm

Cutting Wheel Cover Attachment for cutting work

can be attached to the wheel cover for grinding with easy assembling.



Part No.	Size
199709-0	115mm
199710-5	125mm



Vibration proof grip set



Part No. 194514-0