



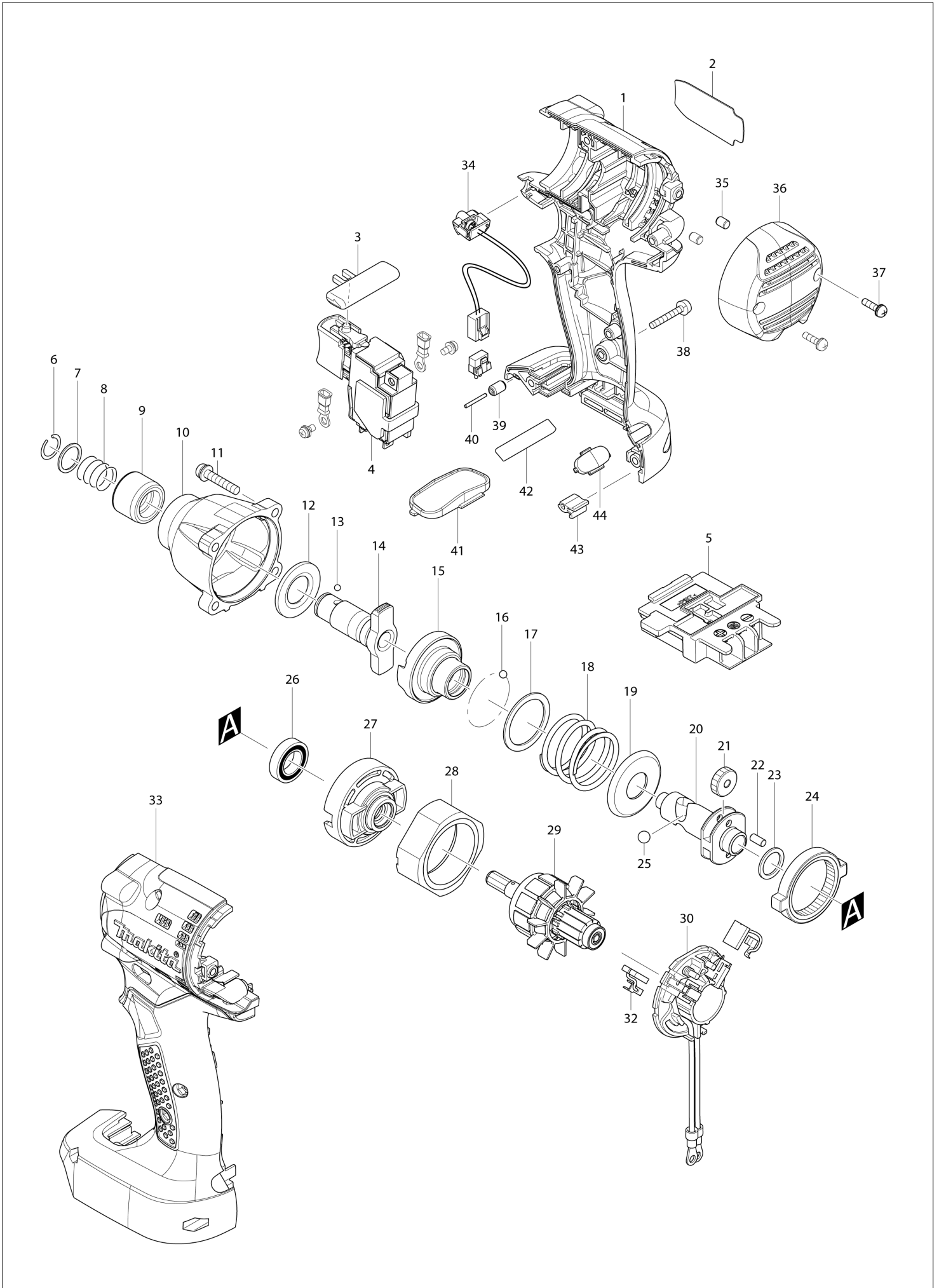
VN	VIETNAM
----	---------

Diagram / Parts List

DTD063

CORDLESS IMPACT DRIVER

(VN) DTD063 / CORDLESS IMPACT DRIVER



VN	VIETNAM
----	---------

DTD063 / CORDLESS IMPACT DRIVER

Item	Sub	Parts No.	Parts Description	Qty	I/C	E/C No.	Close No.	Remark
001-1		183K95-5	HOUSING SET	1				
	C10	263005-3	RUBBER PIN 6	2				
	D10		INC. 33					
002-1		855M58-0	DTD063 NAME PLATE	1				
003		419041-9	F/R CHANGE LEVER	1				
004-1		651363-3	SWITCH TG573MSB-2	1				
005		644803-8	TERMINAL	1				
006		231951-8	RING SPRING 11	1				
007		267085-1	FLAT WASHER 12	1				
008		233005-7	COMPRESSION SPRING 13	1				
009		162257-2	SLEEVE	1				
010-2		144474-6	HAMMER CASE COMPLETE	1				
011		265145-3	+ PAN HEAD SCREW M4X22	4				
012		261108-7	NYLON WASHER 14	1				
013		216001-0	STEEL BALL 3.5	2				
014		326287-9	ANVIL N	1				
015-1		123899-7	HAMMER ASSEMBLY B	1				
	C10	326283-7	HAMMER B	1				
	D10		INC. 16-20,25					
016		216001-0	STEEL BALL 3.5	24				
017		267175-0	FLAT WASHER 24	1				
018-1		232340-0	COMPRESSION SPRING 25	1				
019		267851-6	CUP WASHER 14	1				
020		326286-1	SPINDLE	1				
021		227321-7	SPUR GEAR 16	2				
022		268217-3	PIN 3.5	2				
023		267104-3	FLAT WASHER 12	1				
024-2		221535-0	INTERNAL GEAR 39	1				
025		216011-7	STEEL BALL 5.6	2				
026		211136-2	BALL BEARING 6801LLB	1				
027		454414-9	INTERNAL GEAR CASE	1				
028		638396-5	YOKE UNIT	1				
029		619328-1	ARMATURE	1				
030-1		632N40-0	BRUSH HOLDER COMPLETE	1			C6841	
030-2		638614-1	BRUSH HOLDER COMPLETE	1	O	C6841		
032-2		198887-3	CARBON BRUSH CB-5	1				
033-1		183K95-5	HOUSING SET	1				
	C10	263005-3	RUBBER PIN 6	2				
	D10		INC. 1					
034		620204-4	LED CIRCUIT	1				
035		263032-0	RUBBER PIN 4	2				
036-1		455357-8	REAR COVER	1				
037		266816-5	+ PAN HEAD SCREW M3X12 WITH WR	2				
038		265095-2	PAN HEAD SCREW M3X20	7				
039		263036-2	RUBBER PIN 5	1				
040		268184-2	PIN 1.5	1				
041-1		458608-8	COVER WHITE	1				
042		855M62-9	DTD063 SERIAL NO. LABEL	1				
043		424517-3	CUSHION	1				
044		454418-1	ID PLATE WHITE	1				

Interchange
O : Yes
X : No
< : the new part can be substituted for the current.
> : the current part can be substituted for the new.
S : Interchangeable as a set.