



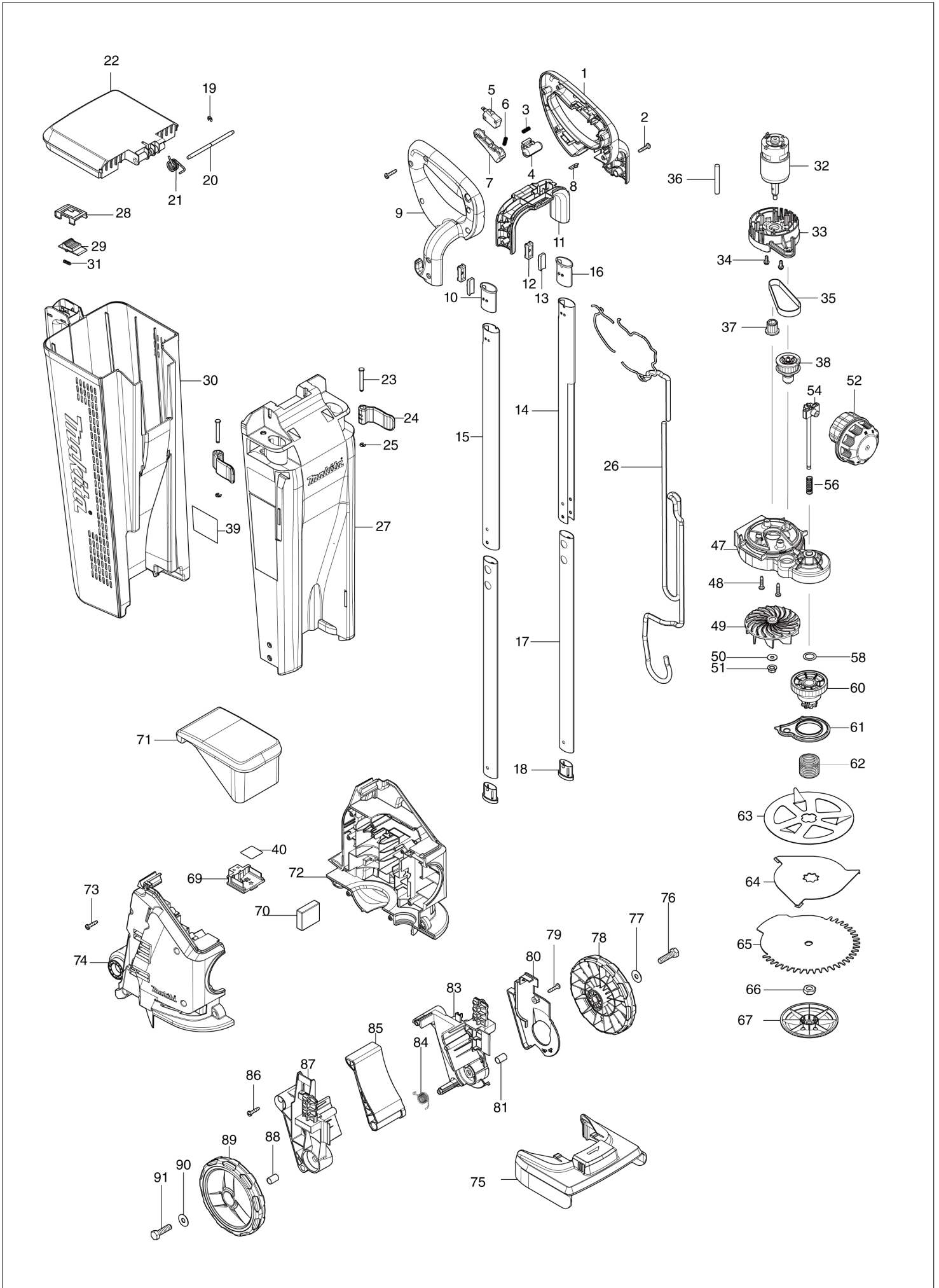
VN	VIETNAM
----	---------

# Diagram / Parts List

**DLM160**

**160MM CORDLESS LAWN MOWER**

# (VN) DLM160 / 160MM CORDLESS LAWN MOWER



<b>VN</b>	<b>VIETNAM</b>
-----------	----------------

## DLM160 / 160MM CORDLESS LAWN MOWER

Item	Sub	Parts No.	Parts Description	Qty	I/C	E/C No.	Close No.	Remark
001		183N77-5	HANDLE SET	1				
	D10		INC. 9					
002		266424-2	TAPPING SCREW 4X20	9				
003		231473-8	COMPRESSION SPRING 4	1				
004		459993-2	LOCK OFF BUTTON	1				
005		650744-8	SWITCH D3V-16-3C26	1				
006		231473-8	COMPRESSION SPRING 4	1				
007		459992-4	SWITCH LEVER	1				
008		620C94-3	LED CIRCUIT	1				
009		183N77-5	HANDLE SET	1				
	D10		INC. 1					
010		412725-8	UPPER STOPPER R	1				
011		412254-1	HANDLE COVER	1				
012		452580-6	HOLDER	2				
013		424391-9	LOCK RUBBER	2				
014		327465-4	LOWER PIPE L	1				
015		327464-6	LOWER PIPE R	1				
016		412724-0	UPPER STOPPER L	1				
017		327466-2	UPPER PIPE	2				
018		452578-3	LOWER STOPPER	2				
019		961011-9	STOP RING E-4	1				
020		256938-9	ROD 5	1				
021		232580-0	TORSION SPRING 13	1				
022		412255-9	DUST BOX COVER	1				
023		256937-1	SHOULDER PIN 5	2				
024		452572-5	LOCK LEVER	2				
025		961011-9	STOP RING E-4	2				
026		699140-5	POWER SUPPLY CORD UNIT	1				
027		141E65-4	FRONT COVER COMPLETE	1				
	C10	8040Y8-9	CAUTION LABEL	1				
028		412251-7	LOCK LEVER HOLDER	1				
029		459995-8	LOCK LEVER	1				
030		412250-9	DUST BOX	1				
031		231473-8	COMPRESSION SPRING 4	1				
032		629469-5	DC MOTOR	1				
033		140P60-7	BEARING BOX COMPLETE	1				
034		911118-1	PAN HEAD SCREW M4X12	2				
035		225103-1	SYNCHRO BELT 10-210	1				
036		699141-3	POWER SUPPLY CORD UNIT	1				
037		222195-1	PULLEY 14-16.4	1				
038		127430-1	SPINDLE ASSEMBLY	1				
039		811U39-2	DLM160 NAME PLATE	1				
040		811U41-5	DLM160 SERIAL NO. LABEL	1				
047		459974-6	GEAR CASE	1				
048		266424-2	TAPPING SCREW 4X20	2				
049		240206-0	FAN 86	1				
050		253804-1	FLAT WASHER 6	1				
051		264073-9	CORNED DISC SPRING HEX NUT M6	1				
052		412245-2	DIAL 70	1				
054		140V84-9	RACK CAM COMPLETE	1				
056		232582-6	COMPRESSION SPRING 8	1				
058		253837-6	FLAT WASHER 14	1				
060		140U83-5	SPUR GEAR COMPLETE	1				
061		412380-6	GEAR CASE COVER	1				
062		232579-5	COMPRESSION SPRING 27	1				
063		327461-2	GUARD PLATE	1				
064		A-48957	ROTARY BLADE 160	1				
065		A-70334	FIXED BLADE 160	1				
066		264080-2	HEX. LOCK NUT M10-17	1				
067		459987-7	UNDER PLATE	1				
069		643852-2	TERMINAL	1				
070		620C93-5	CONTROLLER	1				
071		412244-4	BATTERY COVER	1				
072		183P80-8	HOUSING SET	1				
	D10		INC. 74					

Interchange  
O : Yes  
X : No  
< : the new part can be substituted for the current.  
> : the current part can be substituted for the new.  
S : Interchangeable as a set.

