



BL MOTOR

High Power BL Motor



High power BL motor allows for more comfortable operation in rather heavy-duty application using an attachment such as power brush, power sweep, blower, etc.

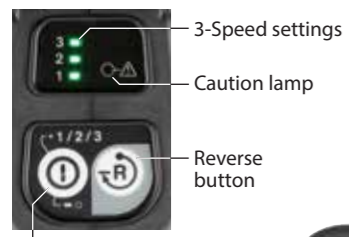


UX01G NEW



Li-ion (Ah)
2.0 2.5 4.0 5.0

Max output
1.0kW



- ON / OFF button
- Caution lamp
- Overload
- Overheat
- Overdischarge



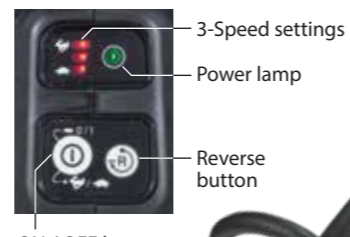
WG WETGUARD
High water-resistance allows to operate the machine even if it is wet with water.

DUX60



Li-ion (Ah)
1.5 2.0 3.0 4.0 5.0 6.0

Max output
0.6kW



- ON / OFF button
- 3-Speed settings
- Power lamp
- Reverse button



XPT
eXtreme Protection Technology

DUX18 NEW



Li-ion (Ah)
1.5 2.0 3.0 4.0 5.0 6.0

Max output
0.47kW

Simple switch specifications



- ON / OFF button
- 2-Speed settings



XPT
eXtreme Protection Technology

Features

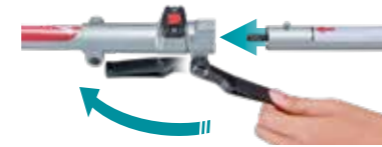
Reverse button for easy removal of grass clippings from the cutting tool (UX01G / DUX60 only)

Grass clippings can be removed by slow reverse rotation of the cutting tool. After 1.5 seconds, machine stops. Switch position will be returned back to "Forward" automatically after stopping.



Easy change

Lever style lock system allows for quick toolless installation and replacement of the attachments.



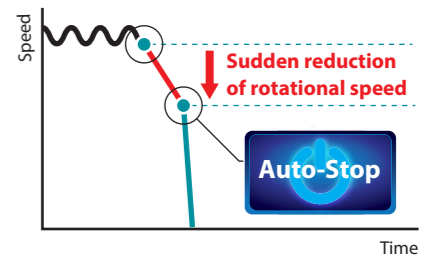
Excellent portability

- Split system of Power head and Attachment provides easier portability.
- Optional tool bag makes it even easier to transport Power head and Attachment and to put them into car trunk or small storage space.



AFT Active Feedback sensing Technology

- If kickback occurs while using below attachment, brake works automatically:
1) Brushcutter with metal blade attachment
2) Pole saw attachment
- If the sensor detects drastically decrease of rotation, the motor stops immediately.



Optional attachments



Brushcutter
EM401MP* / EM402MP
EM403MP* / EM404MP*
EM405MP* / EM406MP*



Rotary Scissors
EM407MP



Edger
EE400MP



Pole saw
EY401MP
EY402MP
EY403MP



Hedge trimmer
Straight: EN410MP
Angle adjustment: EN400MP
EN401MP



Ground trimmer
EN420MP
EN421MP



Cultivator
KR400MP
KR401MP



Coffee harvester
EJ400MP



Power brush
BR400MP



Power sweep
SW400MP



Blower
UB400MP
UB401MP



Shaft extension attachment
LE400MP

1,080 mm

For Pole saw, Pole hedge trimmer and Coffee harvester

*UX01G / DUX60 only



Accessories

Attachments	UX01G (40V max)	DUX60 (18V x2)	DUX18 (18V)
Brushcutter			
EM401MP(Universal guard) ø300mm Nylon cutting head ø2.7	●	●	—
EM402MP ø230mm Metal blade	●	●	●
EM403MP(Universal guard) ø420mm Nylon cutting head ø2.0	●	●	—
EM404MP(Universal guard) ø420mm Nylon cutting head ø2.0	●	●	—
EM405MP(Narrow guard) Universal guard Ø420mm / Ø2.0	●	●	—
EM406MP(Narrow guard) Universal guard Ø420mm / Ø2.0	●	●	—
Grass trimmer			
EM408MP(Universal guard) ø420mm Nylon cutting head ø2.0	●	●	●
EM409MP(Narrow guard) Universal guard Ø420mm / Ø2.0	●	●	●
Rotary Scissors			
EM407MP	●	●	●
Edger			
EE400MP	●	●	●
Pole saw			
EY401MP Cutting wide: 255mm	●	●	●
EY402MP Cutting wide: 255mm	●	●	●
EY403MP Cutting wide: 300mm	●	●	●

Attachments	UX01G (40V max)	DUX60 (18V x2)	DUX18 (18V)
Hedge trimmer			
EN400MP Angle adjustment	●	●	●
EN401MP Angle adjustment	●	●	●
EN410MP Straight	●	●	●
Ground trimmer			
EN420MP Angle adjustment	●	●	●
EN421MP Angle adjustment	●	●	●
Cultivator			
KR400MP 220mm	●	●	●
KR401MP 160mm	●	●	●
Coffee harvester			
EJ400MP	●	●	●
Power brush			
BR400MP	●	●	●
Power sweep			
SW400MP	●	●	●
Blower			
UB400MP	●	●	●
UB401MP Low noise	●	●	●
Shaft extension attachment			
LE400MP	●	●	●



Cordless Multi Function Power Head Series UX01G / DUX60 / DUX18

UX01G

40V^{max} Li-ion

Max output
UX01G
1.0kW

DUX60

18V + 18V → 36V

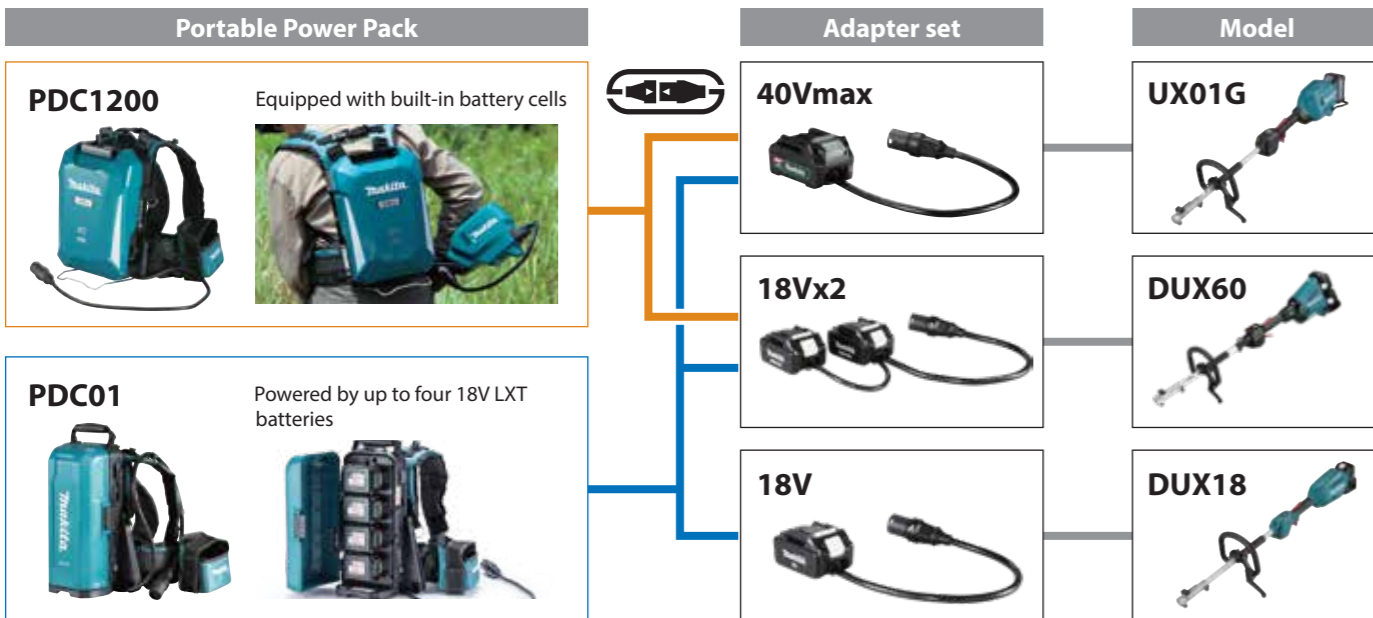
Max output
DUX60
0.6kW

DUX18

18V LITHIUM-ION

Max output
DUX18
0.47kW

Portable Power Pack



Cordless Multi Function Power Head

DUX18 / DUX60 / UX01G

	UX01G	DUX60	DUX18
Variable Speed			
Brake			
Reversing (DUX60 / UX01G)			
Electronic 2-Speed (DUX18)			
Electronic 3-Speed (DUX60 / UX01G)			
Constant Speed			
Soft Start			
No Load Speed (RPM)	High: 0 - 9,700 Medium: 0 - 8,200 Low: 0 - 5,700	High: 0 - 9,700 Medium: 0 - 8,200 Low: 0 - 5,700	High: 0 - 9,700 Low: 0 - 6,800
Max Output	1.0 kW	0.6 kW	0.47 kW
Dimensions (L x W x H)	1,027 x 320 x 209 mm (40-1/4 x 12-5/8 x 8-1/4")	1,011 x 320 x 216 mm (39-3/4 x 12-5/8 x 8-1/2")	983 x 318 x 175 mm (38-3/4 x 12-1/2 x 6-7/8")
Net weight	4.2 - 4.8 kg (9.3 - 10.6 lbs.)	4.1 - 4.7 kg (8.9 - 10.3 lbs.)	2.8 - 3.1 kg (6.2 - 6.8 lbs.)

Standard Equipment: Harness, Safety Goggles, Hex Wrench, Accessory Bag, Tool bag (for spec with Brushcutter attachment only), Carbide-Tipped Saw Blade (for spec with EM402MP only), Box Wrench (for spec with EM402MP/EM403MP/EM404MP only), Metal blade fixing tool (Clamp washer, Nut, Cup) (for spec with EM402MP/EM403MP/EM404MP), Nylon Cutting Head (for spec with EM403MP/EM404MP/EM405MP/EM406MP only), Battery, Charger

The weight may differ depending on the attachment(s), including the battery cartridge. The lightest and heaviest combination, according to EPTA-Procedure 01/2014, are shown in the table. Items of standard equipment and specifications may vary by country or area.

Makita Corporation

3-11-8 Sumiyoshi-cho, Anjo, Aichi, 446-8502 Japan

PRINTED IN JAPAN 202012

