



BL MOTOR

High Power BL Motor



High power BL motor allows for more comfortable operation in rather heavy-duty application using an attachment such as power brush, power sweep, blower, etc.

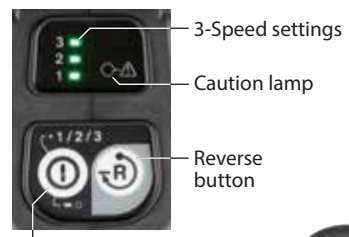


UX01G NEW



Li-ion (Ah)
2.0 2.5 4.0 5.0

Max output
1.0kW



- ON / OFF button
- Caution lamp
- Overload
- Overheat
- Overdischarge



WG WETGUARD
High water-resistance allows to operate the machine even if it is wet with water.

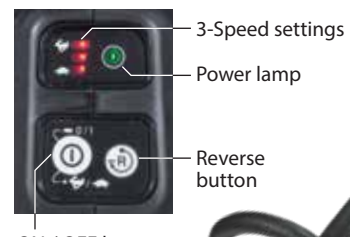


DUX60

18v + 18v → 36v

Li-ion (Ah)
1.5 2.0 3.0 4.0 5.0 6.0

Max output
0.6kW



- ON / OFF button
- 3-Speed settings
- Power lamp
- Reverse button



XPT
eXtreme Protection Technology

DUX18 NEW



Li-ion (Ah)
1.5 2.0 3.0 4.0 5.0 6.0

Max output
0.47kW

Simple switch specifications



ON / OFF button



XPT
eXtreme Protection Technology

Features

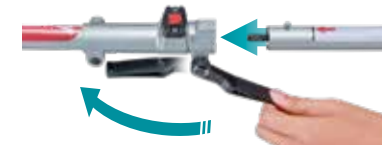
Reverse button for easy removal of grass clippings from the cutting tool (UX01G / DUX60 only)

Grass clippings can be removed by slow reverse rotation of the cutting tool. After 1.5 seconds, machine stops. Switch position will be returned back to "Forward" automatically after stopping.



Easy change

Lever style lock system allows for quick toolless installation and replacement of the attachments.



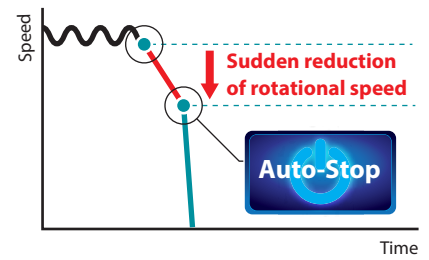
Excellent portability

- Split system of Power head and Attachment provides easier portability.
- Optional tool bag makes it even easier to transport Power head and Attachment and to put them into car trunk or small storage space.



AFT Active Feedback sensing Technology

- If kickback occurs while using below attachment, brake works automatically:
1) Brushcutter with metal blade attachment
2) Pole saw attachment
- If the sensor detects drastically decrease of rotation, the motor stops immediately.



Optional attachments



Brushcutter
EM401MP* / EM402MP
EM403MP* / EM404MP*
EM405MP* / EM406MP*



Grass trimmer
EM408MP
EM409MP



Rotary Scissors
EM407MP



Edger
EE400MP



Pole saw
EY401MP
EY402MP
EY403MP



Hedge trimmer
Straight: EN410MP
Angle adjustment: EN400MP
EN401MP



Ground trimmer
EN420MP
EN421MP



Cultivator
KR400MP
KR401MP



Coffee harvester
EJ400MP



Power brush
BR400MP



Power sweep
SW400MP



Blower
UB400MP
UB401MP



Shaft extension attachment
LE400MP

1,080 mm

For Pole saw, Pole hedge trimmer and Coffee harvester

*UX01G / DUX60 only



Accessories

Attachments	UX01G (40V max)	DUX60 (18V x2)	DUX18 (18V)
Brushcutter			
EM401MP(Universal guard) ø300mm Nylon cutting head ø2.7	●	●	—
EM402MP ø230mm Metal blade	●	●	●
EM403MP(Universal guard) ø420mm Nylon cutting head ø2.0	●	●	—
EM404MP(Universal guard) ø420mm Nylon cutting head ø2.0	●	●	—
EM405MP(Narrow guard) Universal guard Ø420mm / Ø2.0	●	●	—
EM406MP(Narrow guard) Universal guard Ø420mm / Ø2.0	●	●	—
Grass trimmer			
EM408MP(Universal guard) ø420mm Nylon cutting head ø2.0	●	●	●
EM409MP(Narrow guard) Universal guard Ø420mm / Ø2.0	●	●	●
Rotary Scissors			
EM407MP	●	●	●
Edger			
EE400MP	●	●	●
Pole saw			
EY401MP Cutting wide: 255mm	●	●	●
EY402MP Cutting wide: 255mm	●	●	●
EY403MP Cutting wide: 300mm	●	●	●

Attachments	UX01G (40V max)	DUX60 (18V x2)	DUX18 (18V)
Hedge trimmer			
EN400MP Angle adjustment	●	●	●
EN401MP Angle adjustment	●	●	●
EN410MP Straight	●	●	●
Ground trimmer			
EN420MP Angle adjustment	●	●	●
EN421MP Angle adjustment	●	●	●
Cultivator			
KR400MP 220mm	●	●	●
KR401MP 160mm	●	●	●
Coffee harvester			
EJ400MP	●	●	●
Power brush			
BR400MP	●	●	●
Power sweep			
SW400MP	●	●	●
Blower			
UB400MP	●	●	●
UB401MP Low noise	●	●	●
Shaft extension attachment			
LE400MP	●	●	●



Cordless Multi Function Power Head Series UX01G / DUX60 / DUX18



UX01G



Max output UX01G 1.0kW

DUX60



Max output DUX60 0.6kW

DUX18



Max output DUX18 0.47kW

Portable Power Pack

Portable Power Pack	Adapter set	Model
PDC1200 Equipped with built-in battery cells 	40Vmax 	UX01G
PDC01 Powered by up to four 18V LXT batteries 	18Vx2 	DUX60
	18V 	DUX18

Cordless Multi Function Power Head

DUX18 / DUX60 / UX01G

	UX01G	DUX60	DUX18
Variable Speed			
Brake			
Reversing (DUX60 / UX01G)			
Electronic 2-Speed (DUX18)			
Electronic 3-Speed (DUX60 / UX01G)			
Constant Speed			
Soft Start			
No Load Speed (RPM)	High: 0 - 9,700 Medium: 0 - 8,200 Low: 0 - 5,700	High: 0 - 9,700 Medium: 0 - 8,200 Low: 0 - 5,700	High: 0 - 9,700 Low: 0 - 6,800
Max Output	1.0 kW	0.6 kW	0.47 kW
Dimensions (L x W x H)	1,027 x 320 x 209 mm (40-1/4 x 12-5/8 x 8-1/4")	1,011 x 320 x 216 mm (39-3/4 x 12-5/8 x 8-1/2")	983 x 318 x 175 mm (38-3/4 x 12-1/2 x 6-7/8")
Net weight	4.2 - 4.8 kg (9.3 - 10.6 lbs.)	4.1 - 4.7 kg (8.9 - 10.3 lbs.)	2.8 - 3.1 kg (6.2 - 6.8 lbs.)
Standard Equipment:	UX01G: Battery & charger not include Band assembly L (127759-5), safety goggles (195246-2), hex wrench 4 (783202-0), accessory bag (831304-7)	DUX60: Battery & charger not include Band assembly (125516-5), hex wrench 4 (783202-0), accessory bag (831304-7)	DUX18: Battery & charger not include DUX18Z: Band ass'y (127508-0), safety goggles (195246-2), hex wrench 4 (783202-0), accessory bag (831304-7) DUX18RGX4: Band ass'y (127508-0), safety goggles (195246-2), hex wrench 4 (782238-6), box wrench (782238-6), trimmer head (191D89-4), grass trimmer attachment EM408MP, tool bag (195638-5)

The weight may differ depending on the attachment(s), including the battery cartridge. The lightest and heaviest combination, according to EPTA-Procedure 01/2014, are shown in the table. Items of standard equipment and specifications may vary by country or area.

CÔNG TY TNHH MAKITA VIỆT NAM

Kho 456, Block 16, 19L1-2 Đường số 3, KCN VSPP, P. Hòa Phú, TP. Thủ Đức, Bình Dương
ĐT: 0274 362 8338 - Fax: 0274 362 8339 - Website: www.makita.com.vn

CHI NHÁNH CTY TNHH MAKITA VN TẠI MIỀN BẮC
 Khu 5, Số 1, Đường Số 6, KCN - BT - DV VSP Bắc Ninh, P. Phú Châu, TP. Từ Sơn, T. Bắc Ninh.
 ĐT: 0222 376 5942 Fax: 0222 376 5941

TRUNG TÂM DỊCH VỤ KHÁCH HÀNG CHI NHÁNH HÀ NỘI
 65 Trường Chinh, P. Phương Liệt, Q. Thanh Xuân, TP. Hà Nội.
 ĐT: 0243 202 2585

TRUNG TÂM DỊCH VỤ KHÁCH HÀNG CHI NHÁNH ĐÀ NẴNG
 102 Triều Nữ Vương, P. Hải Châu 2, Q. Hải Châu, TP. Đà Nẵng.
 ĐT: 0236 352 5079 / 0236 352 5179 Fax: 0236 352 5478

TRUNG TÂM DỊCH VỤ KHÁCH HÀNG CHI NHÁNH CẦN THƠ
 366 Võ Văn Kiệt, Khu Vực 3, P. An Thới, Q. Bình Thủy, TP. Cần Thơ.
 ĐT: 0292 389 4358 Fax: 0292 389 4358

TRUNG TÂM DỊCH VỤ KHÁCH HÀNG CHI NHÁNH BUÔN MA THUỘT
 88 Lê Đức Thọ, P. Thống Nhất, TP. Buôn Ma Thuột, T. Đắk Lắk.
 ĐT: 0262 355 4556 Fax: 0262 355 4557

TRUNG TÂM DỊCH VỤ KHÁCH HÀNG CHI NHÁNH HẢI PHÒNG
 Số 01 Lê Duẩn, Di An Hoàng Hai Riverside, P. Thượng Lý, Q. Hồng Bàng, TP. Hải Phòng.
 ĐT: 0225 863 1529

TRUNG TÂM DỊCH VỤ KHÁCH HÀNG CHI NHÁNH NHA TRANG
 Chi nhánh Nha Trang
 86 Lê Duẩn, Quận 6, Khu đô thị Vinh Diễm Trưng, Xã Vinh Ngọc, TP. Nha Trang, T. Khánh Hòa
 TRUNG TÂM DỊCH VỤ KHÁCH HÀNG CHI NHÁNH HỒ CHÍ MINH
 Số 12 Trịnh Văn Cấn, P. Cầu Ông Lãnh, Q. 1, TP. Hồ Chí Minh.
 ĐT: 0283 821 5191

