



| | |
|----|---------|
| VN | VIETNAM |
|----|---------|

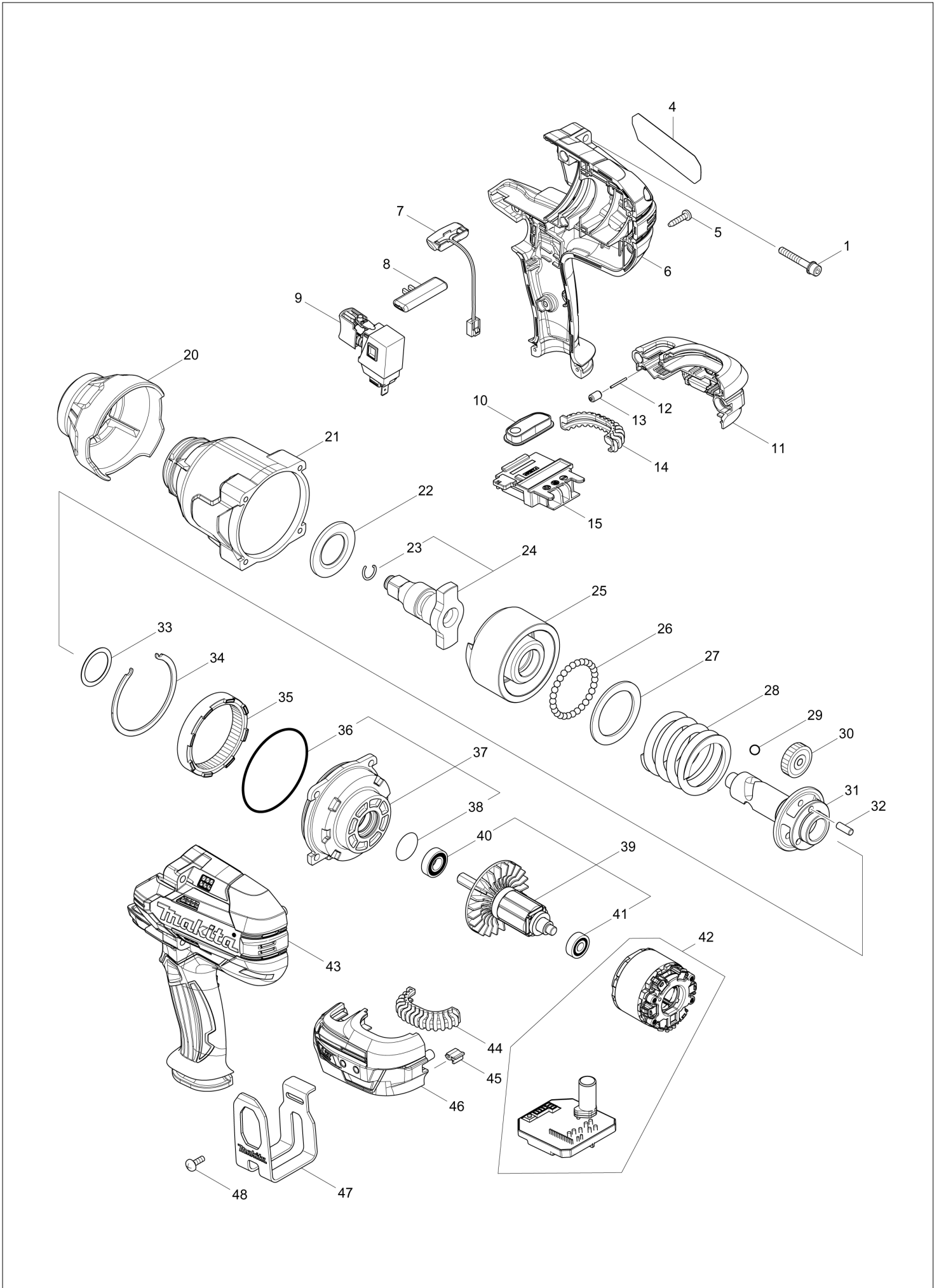
Diagram / Parts List

DTW1002

CORDLESS IMPACT WRENCH



(VN) DTW1002 / CORDLESS IMPACT WRENCH



| | |
|-----------|----------------|
| VN | VIETNAM |
|-----------|----------------|

DTW1002 / CORDLESS IMPACT WRENCH

| Item | Sub | Parts No. | Parts Description | Qty | I/C | E/C No. | Close No. | Remark |
|-------|-----|-----------|--------------------------|-----|-----|---------|-----------|--------|
| 001 | | 251476-6 | H.S.H.BOLT M5X35 WITH WR | 4 | | | | |
| 004 | | 851K57-8 | DTW1002 NAME PLATE | 1 | | | D3199 | |
| 004-1 | | 857K86-9 | DTW1002 NAME PLATE | 1 | S | D3199 | | |
| 005 | | 266326-2 | TAPPING SCREW 4X18 | 9 | | | | |
| 006 | | 183C08-8 | HOUSING SET | 1 | | | B9714 | |
| | D10 | | INC. 43 | | | | B9714 | |
| 006-1 | | 183H36-3 | HOUSING SET | 1 | O | B9714 | | |
| | D10 | | INC. 43 | | | B9714 | | |
| 007 | | 620351-1 | LED CIRCUIT | 1 | | | | |
| 008 | | 456268-0 | F/R CHANGE LEVER | 1 | | | | |
| 009 | | 143416-7 | SWITCH COMPLETE | 1 | | | | |
| 010 | | 143417-5 | SWITCH PLATE COMPLETE | 1 | | | | |
| 011 | | 183C12-7 | BATTERY HOUSING SET | 1 | | | | |
| | C10 | 263005-3 | RUBBER PIN 6 | 2 | | | | |
| | D10 | | INC. 46 | | | | | |
| 012 | | 268284-8 | PIN 1.5 | 1 | | | | |
| 013 | | 263036-2 | RUBBER PIN 5 | 1 | | | | |
| 014 | | 424773-5 | CUSHION RUBBER | 1 | | | | |
| 015 | | 643899-6 | TERMINAL | 1 | | | | |
| 020 | | 424775-1 | BUMPER | 1 | | | B6398 | |
| 020-1 | | 424978-7 | BUMPER | 1 | < | B6398 | | |
| 021 | | 143411-7 | HAMMER CASE COMPLETE | 1 | | | B6398 | |
| 021-1 | | 144473-8 | HAMMER CASE COMPLETE | 1 | S | B6398 | | |
| 022 | | 346948-5 | WASHER 25 | 1 | | | | |
| 023 | | 231907-1 | RING SPRING 10 | 1 | | | B2926 | |
| 023-1 | | 232323-0 | RING SPRING 10 | 1 | < | B2926 | | |
| 024 | | 135717-7 | ANVIL W ASS'Y | 1 | | | B2926 | |
| | D10 | | INC. 23 | | | | B2926 | |
| 024-1 | | 135717-7 | ANVIL W ASS'Y | 1 | < | B2926 | B3909 | |
| | D10 | | INC. 23 | | | B2926 | B3909 | |
| 024-2 | | 135804-2 | ANVIL W ASS'Y | 1 | < | B3909 | | |
| | D10 | | INC. 23 | | | B3909 | | |
| 025 | | 326613-2 | HAMMER | 1 | | | | |
| 026 | | 216002-8 | STEEL BALL 4.8 | 29 | | | | |
| 027 | | 267493-6 | FLAT WASHER 38 | 1 | | | | |
| 028 | | 234383-8 | COMPRESSION SPRING 38 | 1 | | | | |
| 029 | | 216009-4 | STEEL BALL 7.1 | 2 | | | | |
| 030 | | 227391-6 | SPUR GEAR 24 | 3 | | | C6016 | |
| 030-1 | | 226879-3 | SPUR GEAR 24 | 3 | < | C6016 | C6017 | |
| 030-2 | | 226880-8 | SPUR GEAR 24 | 3 | O | C6017 | | |
| 031 | | 326611-6 | SPINDLE | 1 | | | | |
| 032 | | 268079-9 | PIN 5 | 3 | | | | |
| 033 | | 267494-4 | FLAT WASHER 25 | 1 | | | D3627 | |
| 033-1 | | 267127-1 | FLAT WASHER 26 | 1 | O | D3627 | | |
| 034 | | 346947-7 | RETAINER | 1 | | | | |
| 035 | | 227392-4 | INTERNAL SPUR GEAR 54 | 1 | | | | |
| 036 | | 213720-9 | O RING 67 | 1 | | | | |
| 037 | | 135718-5 | INTERNAL GEAR CASE ASS'Y | 1 | | | | |
| | D10 | | INC. 36,38 | | | | | |
| 038 | | 213961-7 | O RING 22 | 1 | | | | |
| 039 | | 519384-0 | ROTOR ASS'Y | 1 | | | C9384 | |
| | D10 | | INC. 40,41 | | | | C9384 | |
| 039-1 | | 519593-1 | ROTOR ASS'Y | 1 | O | C9384 | | |
| | D10 | | INC. 40,41 | | | C9384 | | |
| 040 | | 210069-8 | BALL BEARING 6900DDW | 1 | | | | |
| 041 | | 211022-7 | BALL BEARING 607ZZ | 1 | | | | |
| 042 | | 629170-2 | STATOR COMPLETE | 1 | | | B8967 | |
| 042-1 | | 629330-6 | STATOR COMPLETE | 1 | < | B8967 | | |
| 043 | | 183C08-8 | HOUSING SET | 1 | | | B9714 | |
| | D10 | | INC. 6 | | | | B9714 | |
| 043-1 | | 183H36-3 | HOUSING SET | 1 | O | B9714 | | |
| | D10 | | INC. 6 | | | B9714 | | |
| 044 | | 424773-5 | CUSHION RUBBER | 1 | | | | |
| 045 | | 424517-3 | CUSHION | 1 | | | | |
| 046 | | 183C12-7 | BATTERY HOUSING SET | 1 | | | | |

B:DTW1002RMJ(H)
C:DTW1002RFJ(H)
D:DTW1002RTJ(H)

Interchange
O : Yes
X : No
< : the new part can be substituted for the current.
> : the current part can be substituted for the new.
S : Interchangeable as a set.

