



VN	VIETNAM
----	---------

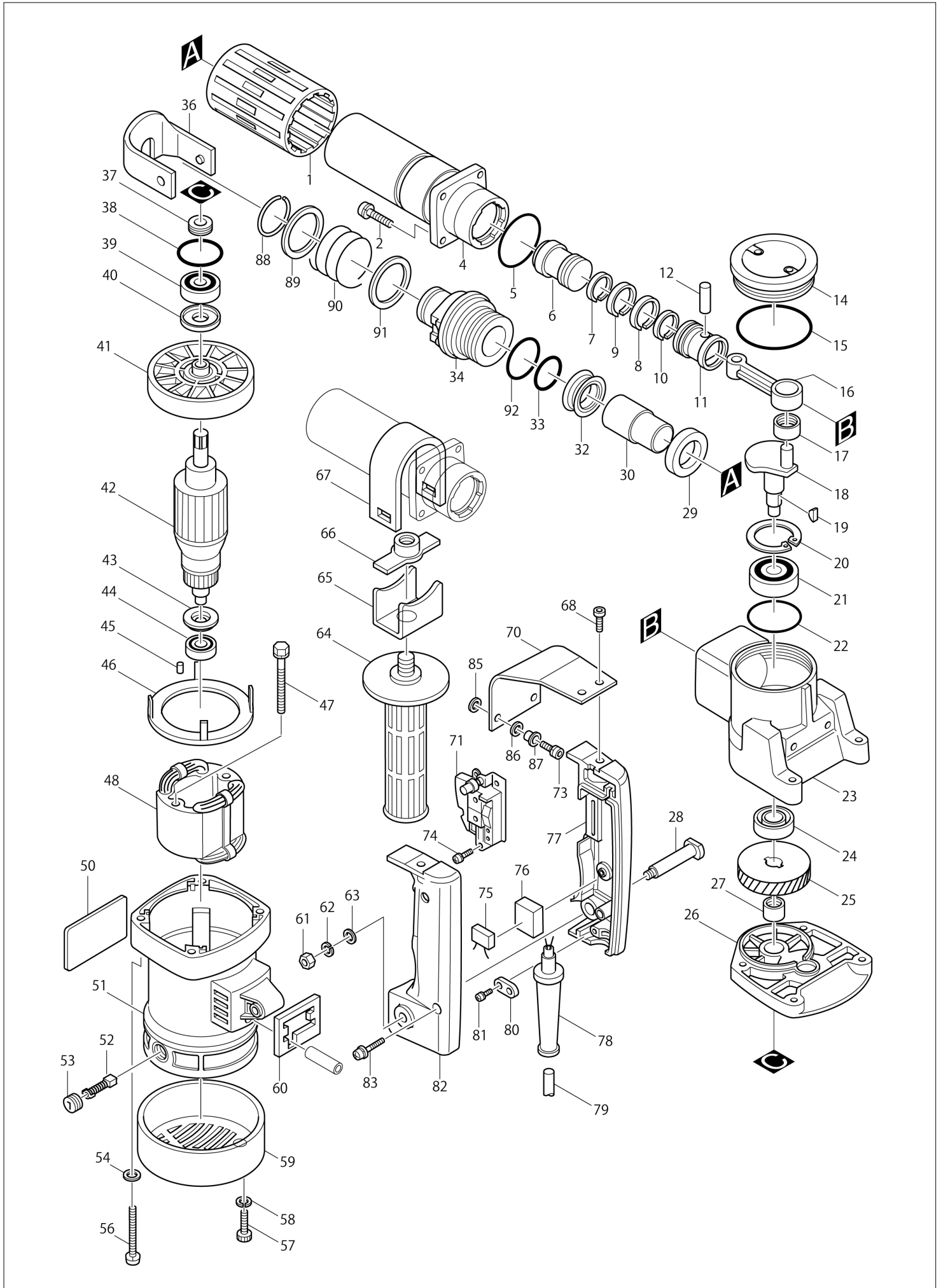
Diagram / Parts List

HM0810

DEMOLITION HAMMER



(VN) HM0810 / DEMOLITION HAMMER



VN	VIETNAM
-----------	----------------

HM0810 / DEMOLITION HAMMER

Item	Sub	Parts No.	Parts Description	Qty	I/C	E/C No.	Close No.	Remark
001		421196-8	BARREL COVER	1				
001-1		421541-7	BARREL COVER	1	X	51098	D8690	
001-2		421541-7	BARREL COVER	1	O	D8690		
002-1		922341-3	HEX. SOCKET HEAD BOLT M6X25	4				
004-1		151413-9	BARREL COMPLETE	1				
004-2		151457-9	BARREL COMPLETE	1	S	51098		
005		213554-0	O RING 44	1				
006		321929-0	STRIKER	1				
007		412073-5	INNER RING 26	1				
008		412053-1	PISTON RING 30	1				
009		412053-1	PISTON RING 30	1				
010		321514-9	INNER RING 26	1				
011		321958-3	PISTON	1				
012		256165-8	PIN 8	1				
013		813002-5	MAKITA LABEL	1				
014-2		150368-5	CRANK CAP COMPLETE	1				
	C10	810712-5	CAUTION LABEL	1				
014-3		411709-3	CRANK CAP	1	O	53547A		
015		213654-6	O RING 60	1				
016		312956-8	ROD	1				
017		212108-0	NEEDLE BEARING 1212	1				
018		321954-1	CRANK SHAFT	1				
019		254001-2	WOODRUFF KEY 4	2				
020		962203-3	RETAINING RING R-47	1				
021		211264-3	BALL BEARING 6303	1				
021-1		211279-0	BALL BEARING 6303LLU	1	O	49203		
022		213606-7	O RING 48	1				
023-1		157627-8	CRANK HOUSING COMPLETE	1				
	D10		INC. 22					
024		213260-7	OIL SEAL 17	1				
025		221669-9	HELICAL GEAR 41	1				
026		157628-6	GEAR HOUSING	1				
	D10		INC. 38					
027		212102-2	NEEDLE BEARING 1210	1				
028		321210-9	HANDLE SHAFT	1				
029		253955-0	FLAT WASHER 24	1				
030		321495-7	IMPACT BOLT	1				
032-1		213420-1	X RING 28	1				
032-2		213428-5	X RING 28	1	X	49793		
033		213411-2	O RING 27	1				
034-3		322594-8	TOOL HOLDER	1				
034-4		193003-2	TOOL HOLDER SET	1	X	58814	63491	
	D10		INC. 92,93				63491	
034-5		193003-2	TOOL HOLDER SET	1	X	63491		
	D10		INC. 92,93			63491		
036-3		165047-2	TOOL RETAINER	1				
036-4		165071-5	TOOL RETAINER	1	X	45912		
037		331194-3	SEAL	1				
038		213459-4	O RING 32	1				
039		211106-1	BALL BEARING 6201LLB	1			65069	
039-1		211144-3	BALL BEARING 6201LLB	1	O	65069	82574	
039-2		211106-1	BALL BEARING 6201LLB	1	O	82574		
040		213102-5	DUST SEAL 12	1				
041		241827-1	FAN 82	1				
042E		518283-3	ARMATURE ASS'Y 220V	1				
	D10		INC. 39-41,43,44					
042E1		516148-3	ARMATURE ASS'Y 220V	1	O	54542	75769	220V
	D10		INC. 39-41,43,44				75769	
042E2		516148-3	ARMATURE ASS'Y 220V	1	O	75769		220V
	D10		INC. 39-41,43,44			75769		
043		681625-5	INSULATION WASHER	1				
044		211031-6	BALL BEARING 608LLB	1				
045		263014-2	RUBBER PIN 4	1			A3973	
045-1		263002-9	RUBBER PIN 4	1	O	A3973		
046		410509-8	BAFFLE PLATE	1				

Interchange
O : Yes
X : No
< : the new part can be substituted for the current.
> : the current part can be substituted for the new.
S : Interchangeable as a set.

VN	VIETNAM
-----------	----------------

HM0810 / DEMOLITION HAMMER

Item	Sub	Parts No.	Parts Description	Qty	I/C	E/C No.	Close No.	Remark
047-2		265345-5	+ HEX. BOLT M5X60	2				
048C		522508-9	FIELD ASS'Y 220V	1				220V
	C10	654019-7	RING TERMINAL	2				
	C20	654501-6	CONNECTOR P-1.25	2				
050		855553-2	NAME PLATE HM0810	1			Z18726	
050-1		897955-6	NAME PLATE HM0810	1	<	Z18726		
051		157629-4	MOTOR HOUSING	1				
	C10	643603-3	BRUSH HOLDER 6-10	2				
	D10		INC. 45					
051-1		159634-7	MOTOR HOUSING	1	S	44730		
	C10	643603-3	BRUSH HOLDER 6-10	2				
	D10		INC. 45					
052		181038-5	A.C. CARBON BRUSH CB-105	1			85070	
052-1		B-80307	CARBON BRUSH SET CB-105A	1	<	85070		
053		643600-9	BRUSH HOLDER CAP 6-10	2				
054		941151-9	FLAT WASHER 6	4			A3776	
056-1		922371-4	HEX. SOCKET HEAD BOLT M6X50	4			A3776	
056-2		922374-8	H.S.H.BOLT M6X50 WITH WG	4	S	A3776		
057-3		922226-3	HEX. SOCKET HEAD BOLT M5X18	2				
058-1		942101-7	SPRING WASHER 5	2			58599	
059		284059-7	REAR COVER	1				
060		413020-9	SPONGE 38.5-46	1				
060-1		423257-0	SPONGE 38.5-46	1	O	44730		
061		931302-2	HEX. NUT M6	1				
062		942151-2	SPRING WASHER 6	1			C3118	
062-1		253428-3	SPRING WASHER 6	1	O	C3118		
063		941151-9	FLAT WASHER 6	1				
064		273457-0	GRIP 32	1				
065		341922-8	GRIP BASE	1				
066		321497-3	CLAMP NUT	1				
067		341914-7	GRIP CLAMP	1				
068-3		922316-2	HEX. SOCKET HEAD BOLT M6X14	2				
070-1		343753-1	CUSHION PLATE	2				
071A		651051-2	SWITCH HPAHR6-35S	1				
073-4		265914-2	HEX. SOCKET HEAD BOLT M6X25	2				
074		911109-2	PAN HEAD SCREW M4X8	2				
077		181816-3	HANDLE SET	1				
	D10		INC. 82					
077-1		182590-6	HANDLE SET	1	O	44730		
	D10		INC. 82					
078A		682503-2	CORD GUARD 8-90	1				
079T		666071-3	POWER SUPPLY CORD 1.00-2-5.0	1			C4571	
079T1		691587-9	POWER SUPPLY CORD 0.75-2-5.0	1	S	C4571		
080		687001-1	STRAIN RELIEF	1			C4571	
080-1		687000-3	STRAIN RELIEF	1	S	C4571		
081-1		911133-5	PAN HEAD SCREW M4X18	2				
082		181816-3	HANDLE SET	1				
	D10		INC. 77					
082-1		182590-6	HANDLE SET	1	O	44730		
	D10		INC. 77					
083		911243-8	PAN HEAD SCREW M5X25	1				
085		262051-3	RUBBER RING 9	2				
086		262052-1	RUBBER RING 9	2				
087		257636-8	SLEEVE 6	2				
088		231936-4	RING SPRING 30.5	1				
089		267112-4	FLAT WASHER 34	1				
090		233052-8	COMPRESSION SPRING 35	1				
091		267112-4	FLAT WASHER 34	1				
092		213508-7	O RING 38	1				
093		267203-1	FLAT WASHER 43	1		58512		
400D		150919-4	PLASTIC CARRYING CASE COMPLETE	1			Y05999	
	C10	810960-6	CAUTION LABEL	1			Y05999	
	C20	162202-7	LATCH	2			Y05999	
	C30	416549-4	HANDLE	1			Y05999	
	C40	416556-7	COVER	2			Y05999	

Interchange
O : Yes
X : No
< : the new part can be substituted for the current.
> : the current part can be substituted for the new.
S : Interchangeable as a set.

