



40Vmax series movie



40Vmax mechanism movie



This movie was filmed in Japan. Models and specs may vary by country.

## Cordless Hammer Series



Demolition Hammer HM002G



Rotary Hammer HR006G



Demolition Hammer HM001G



Rotary Hammer HR005G



Combination Hammer HR001G / HR002G / HR003G / HR004G



Cordless Demolition Hammer HM002G



Adapted for SDS-MAX bits

Satisfy Professional's Needs



# Cordless / More powerful than corded tools

### Accessories • Standard equipment

#### Dust extractor attachment set

without Vacuum hose set

Part No. 199143-4



with Vacuum hose set

Part No. 199144-2



#### Side handle

Part No. 135269-8



#### Grease vessel set for bit

Part No. 198993-4



### Charging Time Reference

	DC40RA Fast Charging	DC40RC	DC40RB
BL4020 2.0Ah	22min	30min	
BL4025 2.5Ah	28min	38min	
BL4040 4.0Ah	45min	67min	
BL4050F 5.0Ah	50min	85min	

\*1 Recommended battery

### Cordless Demolition Hammer

#### HM002G Adapted for SDS-MAX bits

- Variable Speed
- SDS-MAX Shank
- Constant Speed
- Soft Start
- Built-in Job Light
- Carrying Case

Impact Energy EPTA-Procedure 05/2009: 20.9 J  
Blows Per Minute (BPM) 950 - 1,900  
Shank Diameter 18 mm (11/16")  
Sound Pressure Level 92 dB(A)  
Sound Power Level 103 dB(A)  
Vibration Level Chiselling Function w/ Side Handle: 8.0 m/s<sup>2</sup>  
Dimensions (L x W x H) w/ BL4040: 574 x 146 x 324 mm (22-5/8 x 5-3/4 x 12-3/4")  
w/ BL4050F: 574 x 156 x 344 mm (22-5/8 x 6-1/8 x 13-1/2")

Net weight  
HM002GZ: Battery & charger are sold separately  
HM002GZ03: Battery & charger are sold separately

Standard Equipment: Bull point 280 mm (A-80787), grease vessel (198993-4), cloth (443122-7), side handle 82(135269-8)

The weight may differ depending on the attachment(s), including the battery cartridge. The lightest and heaviest combination, according to EPTA-Procedure 01/2014, are shown in the table. Items of standard equipment and specifications may vary by country or area. M-052023-1

## CÔNG TY TNHH MAKITA VIỆT NAM

Kho 5/5, Đường Số 6, KCN - BT - DV VSP Bắc Ninh, P. Phú Châu, TP. Từ Sơn, TP. Thủ Dầu Một, Bình Dương  
ĐT: 0274 362 8338 - Fax: 0274 362 8339 - Website: www.makita.com.vn

CHI NHÁNH CTY TNHH MAKITA VN TẠI MIỀN BẮC  
Kho 5, Số 1, Đường Số 6, KCN - BT - DV VSP Bắc Ninh, P. Phú Châu, TP. Từ Sơn, T. Bắc Ninh  
ĐT: 0222 376 5942 Fax: 0222 376 5941

TRUNG TÂM DỊCH VỤ KHÁCH HÀNG  
CHI NHÁNH HÀ NỘI  
85 Trường Chinh, P. Phương Liệt, Q. Thanh Xuân, TP. Hà Nội  
ĐT: 0243 202 2585

TRUNG TÂM DỊCH VỤ KHÁCH HÀNG  
CHI NHÁNH ĐÀ NẴNG  
1102 Triều Nữ Vương, P. Hải Châu 2, Q. Hải Châu, TP. Đà Nẵng  
ĐT: 0236 352 5079 / 0236 352 5179 Fax: 0236 352 5478

TRUNG TÂM DỊCH VỤ KHÁCH HÀNG  
CHI NHÁNH CẦN THƠ  
366 Võ Văn Kiệt, Khu Vực 5, P. An Thủy, Q. Bình Thủy, TP. Cần Thơ  
ĐT: 0292 389 4358 Fax: 0292 389 4358

TRUNG TÂM DỊCH VỤ KHÁCH HÀNG  
CHI NHÁNH BUƠN MA THUỘT  
88 Lê Đức Thọ, P. Thắng Mỹ, TP. Buôn Ma Thuột, T. Đắk Lắk  
ĐT: 0262 355 4556 Fax: 0262 355 4557

TRUNG TÂM DỊCH VỤ KHÁCH HÀNG  
CHI NHÁNH HẢI PHÒNG  
Số 01 Lê Duẩn, Di An Hoàng Hai Riverside, P. Thượng Lý, Q. Hồng Bàng, TP. Hải Phòng  
ĐT: 0283 821 5191

TRUNG TÂM DỊCH VỤ KHÁCH HÀNG  
CHI NHÁNH NHÀ TRANG  
Lô 56-58 đường B6, Khu đô thị Vinh Diễm Trung, Xã Vinh Ngọc, TP. Nhà Trng, T. Khánh Hòa  
ĐT: 0258 220 0639

TRUNG TÂM DỊCH VỤ KHÁCH HÀNG  
CHI NHÁNH HỒ CHÍ MINH  
Số 12 Trịnh Văn Cấn, P. Cầu Ông Lãnh, Q. 1, TP. Hồ Chí Minh  
ĐT: 0283 821 5191





40V Li-ion max + 40V Li-ion max **XGT X2** 80V max



# High power and Low vibration



Impact energy  
[EPTA-Procedure 05/2009]  
**20.9**  
Joule

Work amount (for 5 minutes)  
Concrete with compressive strength of 40N/mm<sup>2</sup>  
BL4040 x2 (on a full battery charge)

HM002G	115
AC tools	100
small	large

## Anti-Vibration Technology

Vibration level at main handle

**8.0**m/s<sup>2</sup>



**AVT**

Active dynamic vibration absorber moves in the opposite direction to the drive piston to reduce vibration.

Vibration absorbing housing isolates handle and motor.

Chipped concrete and measured the amount of concrete removed

Concrete with compressive strength of 40N/mm<sup>2</sup>  
BL4040 x2 (on a full battery charge)

about **13 min**

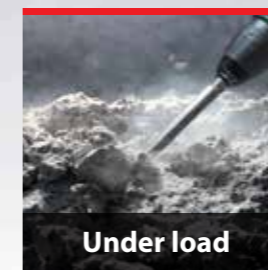
**XPT**  
eXtreme  
Protection  
Technology



**BL MOTOR** High power brushless motor

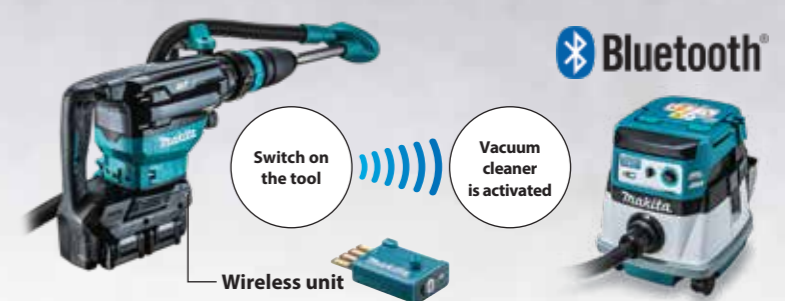
**SOFT NO LOAD**

Suppression of motor speed during no-load



**AWS** Auto-start Wireless System

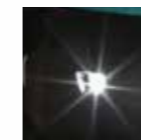
Connects to compatible vacuum cleaner with Bluetooth. The vacuum cleaner automatically runs while the switch is on.



**Adapted for SDS-MAX bits**

12 bit angle settings

Twin LED job lights



Variable speed control dial



**Slide lever for trigger lock-on / lock-off**

Trigger lock-on/lock-off can be set simply by pushing the slide lever:

- For lock-on of the trigger, pull and hold the trigger, then push the slide lever.
- For lock-off of the trigger, push the slide lever without pulling the trigger.