



Cordless Backpack Vacuum Cleaner DVC260

Accessories

Hose

Note:
Although type A hose can be connected with power tools,
Front cuffs and Joint are required for some power tools.
A: for power tools
B: for cleaning



Size	Length (m)	Type	with Front cuffs	Part No.
28mm	1.0	B	-	143787-2
28mm	1.5	A	22, 38	A-34235
28mm	1.5	A	38	152992-0

Telescopic pipe assembly



Part No.
123584-2

Bending pipe assembly



Part No.
123677-5

Anchor nozzle set



Type	Part No.
Use with Hose Inner Dia.28mm (Front cuffs 22)	192236-6

Flexible rubber nozzle



Part No.
197900-4

Floor nozzle



Part No.
123486-2

Hose band



Part No.
166116-2

Power by 18V Li-ion battery



with Battery fuel gauge

BL1860B: 6.0Ah BL1830B: 3.0Ah
BL1850B: 5.0Ah BL1820B: 2.0Ah
BL1840B: 4.0Ah *BL1815N: 1.5Ah
(*without Battery fuel gauge)

Charger

Fast Charger DC18RD
Two Port Multi
Fast Charger



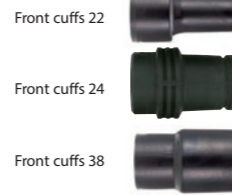
Fast Charger DC18RC



Charger DC18SD



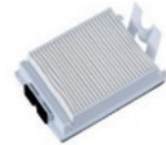
Front cuffs & Joint



Type	Part No.
Front cuffs 22	195547-8
Front cuffs 24	195546-0
Front cuffs 38	195545-2
Joint 22-38	195548-6

Filter set assembly

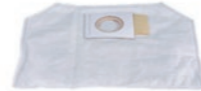
HEPA filter



Part No.
*123636-9

Filter bag set

(Paper dust bag)



Per pkg.	Part No.
10	197903-8

Dust bag assembly

(Cloth dust bag)



Part No.
197898-5



Cordless Backpack Vacuum Cleaner DVC260

Electronic 2-Speed	Capacity	Filter bag / Paper dust bag: 2.0 / 2.0 L
Revolving Hose	Continuous Use (min.)	Cloth dust bag: 1.5L With BL1850B (High): 60 With BL1850B (Low): 90
Static Free Hose	Max Air Flow	1.5 m ³ /min
Built-in job Light	Max Sealed Suction	7.1 kPa (710 mmH ₂ O)
	Suction Power	High / Low : 45 / 25 W
	Vibration Level	Operation Without Load: 2.5 m/s ² or less
	Sound Pressure Level	70 dB(A) or less
	Dimensions(L x W x H)	230x152x373mm (9"x6"x14-3/4")
	Net weight	BL1815N x 2: 3.9 kg (8.7 lbs) BL1850B x 2: 4.3 kg (9.4 lbs)

Standard Equipment Floor Nozzle, Flexible rubber nozzle,
Telescopic pipe assembly, Hose complete 28-1.0, Bent Pipe, Hose band,
Filter bag (Paper dust bag), Battery, Charger

weight according to EPTA-Procedure 01/ver.2.1
Items of standard equipment and specifications may vary by country or area.

Makita Corporation

3-11-8 Sumiyoshi-cho, Anjo, Aichi, 446-8502 Japan

PRINTED IN JAPAN 201605



BL MOTOR

Long Run time
90min.

Power selection: Low (with BL1850B)

Light and
Comfortable
4.3kg

Powerful
Suction Power
45W

18Vx2 Lithium-ion

Powered by two 18V Li-ion batteries in series

Two 18V Li-ion batteries can be directly installed on the machine to supply energy to the powerful 36V DC motor drive system.

18V + 18V → 36V



Can be used with power tools.



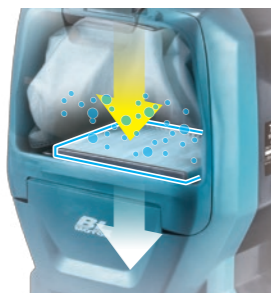
HEPA filter

HEPA Filter

is used as the main filter to capture very fine particles effectively.

Able to capture 99.97% of particles as small as 0.3-1µm

Exhaust air is as clean as that of air cleaner.



thanks to HEPA filter.

Comfortable harness



featuring shoulder and waist belts adjustable to suit user's size for less fatigue even after long continuous operation

Controller



The weight of tool body is removed from user's wrist and hand, enabling Easy corner-to-corner cleaning for longer time with less fatigue.



System charts

Tool connecting hose and Hose cuff are optional.

For Model	Suction Systems and Part No.	For Model	Suction Systems and Part No.
Rotary Hammer, Combination Hammer DHR243 DHR162, DHR164, HR165 DHR202	Dust cup set 195179-1 Dust extractor attachment 193472-7	Circular Saw DHS710, DHS711 DHS680 Jig Saw DJV141, DJV142 DJV181, DJV182	Joint (Dust nozzle) 196520-1 196961-1 (EU) 196952-2 (others country) (with short lever) Vacuum head 126331-0
Circular Saw DHS630 DSS611 DSS501, DSS500 HS300D, HS301D	Joint (Dust nozzle) 194314-8 419283-5 194415-2 452237-9	Angle Grinder For 125mm Model	Dust collecting wheel guard 196845-3
Multi Tool DTM50, DTM40	Dust attachment set 195965-0	For 115, 125mm Model	Dust collecting wheel guard For cup type diamond wheel 196846-1 For IEC 195239-9 195250-1
Cut-out Tool DCO180, DCO140	Dust collecting cover 193449-2		
Drywall Cutter DSD180, DSD140			



Front cuffs 22



Front cuffs 24



Front cuffs 38