



|    |         |
|----|---------|
| VN | VIETNAM |
|----|---------|

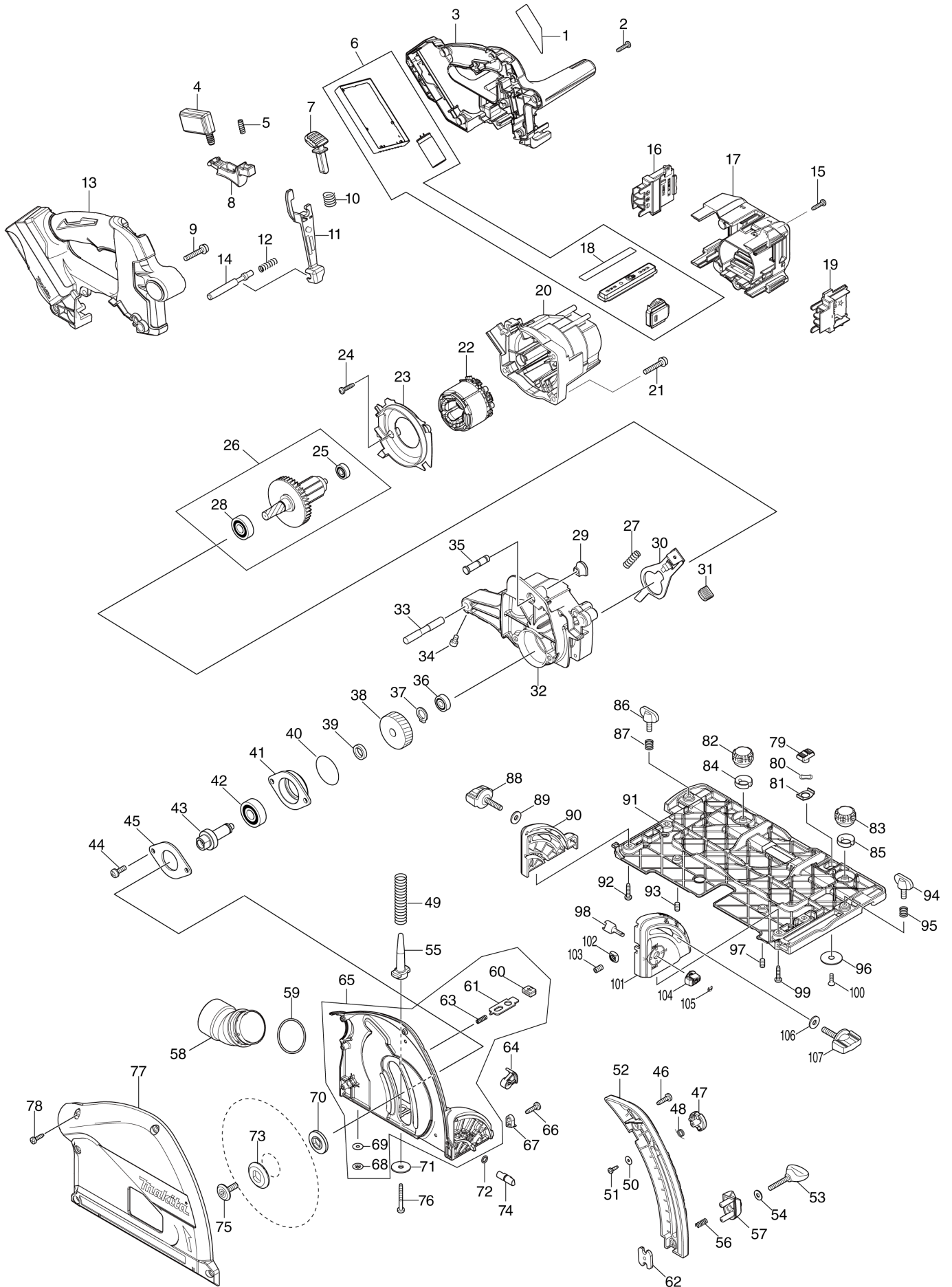
# Diagram / Parts List

**DSP600**

**165MM CORDLESS PLUNGE CUT SAW**



# (VN) DSP600 / 165MM CORDLESS PLUNGE CUT SAW



|           |                |
|-----------|----------------|
| <b>VN</b> | <b>VIETNAM</b> |
|-----------|----------------|

### DSP600 / 165MM CORDLESS PLUNGE CUT SAW

| Item  | Sub | Parts No. | Parts Description           | Qty | I/C | E/C No. | Close No. | Remark |
|-------|-----|-----------|-----------------------------|-----|-----|---------|-----------|--------|
| 001   |     | 853K64-7  | DSP600 NAME PLATE           | 1   |     |         |           |        |
| 002   |     | 265995-6  | TAPPING SCREW 4X18          | 8   |     |         |           |        |
| 003   |     | 183H46-0  | HANDLE REAR COVER SET       | 1   |     |         |           |        |
|       | C10 | 263005-3  | RUBBER PIN 6                | 4   |     |         |           |        |
|       | D10 |           | INC. 13,17                  |     |     |         |           |        |
| 004   |     | 651083-9  | SWITCH C3XA-1PSPM           | 1   |     |         |           |        |
| 005   |     | 234173-9  | COMPRESSION SPRING 4        | 1   |     |         |           |        |
| 006   |     | 135900-6  | CONTROLLER ASSY             | 1   |     |         | C2064     |        |
|       | C10 | 620691-7  | SUB CONTROLLER              | 1   |     |         | C2064     |        |
|       | D10 |           | INC. 18                     |     |     |         | C2064     |        |
| 006-1 |     | 135973-9  | CONTROLLER ASSY             | 1   | <   | C2064   |           |        |
|       | C10 | 620691-7  | SUB CONTROLLER              | 1   |     | C2064   |           |        |
|       | D10 |           | INC. 18                     |     |     | C2064   |           |        |
| 007   |     | 419629-5  | LOCK OFF BUTTON             | 1   |     |         |           |        |
| 008   |     | 457748-9  | SWITCH LEVER                | 1   |     |         |           |        |
| 009   |     | 911253-5  | PAN HEAD SCREW M5X30        | 2   |     |         |           |        |
| 010   |     | 233089-5  | COMPRESSION SPRING 12       | 1   |     |         |           |        |
| 011   |     | 457749-7  | LOCK PLATE                  | 1   |     |         |           |        |
| 012   |     | 233267-7  | COMPRESSION SPRING 7        | 1   |     |         |           |        |
| 013   |     | 183H46-0  | HANDLE REAR COVER SET       | 1   |     |         |           |        |
|       | C10 | 263005-3  | RUBBER PIN 6                | 4   |     |         |           |        |
|       | D10 |           | INC. 3,17                   |     |     |         |           |        |
| 014   |     | 324709-3  | LOCK PIN 8                  | 1   |     |         |           |        |
| 015   |     | 265995-6  | TAPPING SCREW 4X18          | 5   |     |         |           |        |
| 016   |     | 643874-2  | TERMINAL                    | 1   |     |         |           |        |
| 017   |     | 183H46-0  | HANDLE REAR COVER SET       | 1   |     |         |           |        |
|       | C10 | 263005-3  | RUBBER PIN 6                | 4   |     |         |           |        |
|       | C20 | 813D01-1  | CAUTION LABEL               | 1   |     |         | Y07532    |        |
|       | D10 |           | INC. 3,13                   |     |     |         |           |        |
| 018   |     | 813D03-7  | INDICATION LABEL            | 1   |     |         |           |        |
| 019   |     | 643874-2  | TERMINAL                    | 1   |     |         |           |        |
| 020   |     | 457750-2  | MOTOR HOUSING               | 1   |     |         |           |        |
| 021   |     | 911253-5  | PAN HEAD SCREW M5X30        | 4   |     |         |           |        |
| 022   |     | 629275-8  | STATOR                      | 1   |     |         |           |        |
| 023   |     | 457751-0  | BAFFLE PLATE                | 1   |     |         |           |        |
| 024   |     | 265995-6  | TAPPING SCREW 4X18          | 2   |     |         |           |        |
| 025   |     | 210022-4  | BALL BEARING 626DDW         | 1   |     |         |           |        |
| 026   |     | 519448-0  | ROTOR ASSY                  | 1   |     |         |           |        |
|       | D10 |           | INC. 25,28                  |     |     |         |           |        |
| 027   |     | 233084-5  | COMPRESSION SPRING 6        | 1   |     |         |           |        |
| 028   |     | 211131-2  | BALL BEARING 6001DDW        | 1   |     |         |           |        |
| 029   |     | 286040-4  | CAP                         | 1   |     |         |           |        |
| 030   |     | 345742-2  | SHAFT LOCK                  | 1   |     |         |           |        |
| 031   |     | 286039-9  | CAP                         | 1   |     |         |           |        |
| 032   |     | 144586-5  | GEAR HOUSING COMPLETE       | 1   |     |         |           |        |
|       | C10 | 263002-9  | RUBBER PIN 4                | 1   |     |         |           |        |
| 033   |     | 326960-1  | PIN 8                       | 1   |     |         | C0221     |        |
| 033-1 |     | 324716-6  | PIN 8                       | 1   | <   | C0221   |           |        |
| 034   |     | 265907-9  | HEX. SOCKET HEAD BOLT M5X10 | 1   |     |         |           |        |
| 035   |     | 324708-5  | STOPPER PIN 8               | 1   |     |         |           |        |
| 036   |     | 211021-9  | BALL BEARING 607LLB         | 1   |     |         |           |        |
| 037   |     | 961052-5  | RETAINING RING S-12         | 1   |     |         |           |        |
| 038   |     | 221548-1  | HELICAL GEAR 41             | 1   |     |         |           |        |
| 039   |     | 257010-0  | RING 12                     | 1   |     |         |           |        |
| 040   |     | 213512-6  | O RING 39                   | 1   |     |         |           |        |
| 041   |     | 318088-9  | BEARING BOX                 | 1   |     |         |           |        |
| 042   |     | 211129-9  | BALL BEARING 6201DDW        | 1   |     |         |           |        |
| 043   |     | 324707-7  | SPINDLE                     | 1   |     |         |           |        |
| 044   |     | 911221-8  | PAN HEAD SCREW M5X16        | 2   |     |         |           |        |
| 045   |     | 285689-7  | BEARING RETAINER 55         | 1   |     |         |           |        |
| 046   |     | 266034-5  | TAPPING SCREW CT 4X16       | 2   |     |         |           |        |
| 047   |     | 419630-0  | LOCK LEVER                  | 1   |     |         |           |        |
| 048   |     | 231665-9  | TORSION SPRING 7            | 1   |     |         |           |        |
| 049   |     | 233479-2  | COMPRESSION SPRING 11       | 1   |     |         |           |        |
| 050   |     | 253821-1  | FLAT WASHER 3               | 1   |     |         |           |        |

Interchange  
O : Yes  
X : No  
< : the new part can be substituted for the current.  
> : the current part can be substituted for the new.  
S : Interchangeable as a set.

## DSP600 / 165MM CORDLESS PLUNGE CUT SAW

| Item  | Sub | Parts No. | Parts Description             | Qty | I/C | E/C No. | Close No. | Remark |
|-------|-----|-----------|-------------------------------|-----|-----|---------|-----------|--------|
| 051   |     | 266007-8  | TAPPING SCREW BIND PT 3X10    | 1   |     |         |           |        |
| 052   |     | 457756-0  | DEPTH GUIDE                   | 1   |     |         |           |        |
| 053   |     | 251867-1  | THUMB SCREW M5X30             | 1   |     |         |           |        |
| 054   |     | 941101-4  | FLAT WASHER 5                 | 1   |     |         |           |        |
| 055   |     | 419624-5  | SPRING HOLDER                 | 1   |     |         |           |        |
| 056   |     | 231372-4  | COMPRESSION SPRING 5          | 1   |     |         |           |        |
| 057   |     | 419623-7  | STOPPER BLOCK                 | 1   |     |         |           |        |
| 058   |     | 457752-8  | DUST NOZZLE                   | 1   |     |         |           |        |
| 059   |     | 213460-9  | O RING 35                     | 1   |     |         |           |        |
| 060   |     | 286041-2  | CAP 14                        | 2   |     |         |           |        |
| 061   |     | 345747-2  | SPACER PLATE                  | 2   |     |         |           |        |
| 062   |     | 345744-8  | NUT PLATE                     | 1   |     |         |           |        |
| 063   |     | 233025-1  | COMPRESSION SPRING 2          | 2   |     |         |           |        |
| 064   |     | 144867-7  | LEVER 20 COMPLETE             | 1   |     |         |           |        |
|       | C10 | 263002-9  | RUBBER PIN 4                  | 1   |     |         |           |        |
| 065   |     | 144868-5  | BLADE CASE COMPLETE           | 1   |     |         | C2424     |        |
|       | D10 |           | INC. 60,61,63,68,69           |     |     |         | C2424     |        |
| 065-1 |     | 140D56-6  | BLADE CASE COMPLETE           | 1   | O   | C2424   |           |        |
|       | D10 |           | INC. 60,61,63,68,69           |     |     | C2424   |           |        |
| 066   |     | 266034-5  | TAPPING SCREW CT 4X16         | 1   |     |         |           |        |
| 067   |     | 419632-6  | POSITION PLATE                | 1   |     |         |           |        |
| 068   |     | 259008-3  | PUSH NUT 4                    | 2   |     |         |           |        |
| 069   |     | 253874-0  | FLAT WASHER 4                 | 2   |     |         | C2424     |        |
| 069-1 |     | 347392-9  | PLATE                         | 2   | O   | C2424   |           |        |
| 070   |     | 224473-5  | INNER FLANGE 35               | 1   |     |         | B7950     |        |
| 070-1 |     | 224593-5  | INNER FLANGE 35               | 1   | <   | B7950   |           |        |
| 071   |     | 253010-8  | FLAT WASHER 6                 | 1   |     |         |           |        |
| 072   |     | 213021-5  | O RING 5                      | 1   |     |         |           |        |
| 073   |     | 224409-4  | OUTER FLANGE 35               | 1   |     |         |           |        |
| 074   |     | 324710-8  | PIN 8                         | 1   |     |         |           |        |
| 075   |     | 266403-0  | HEX. SOCKET HEAD BOLT M6      | 1   |     |         |           |        |
| 076   |     | 266053-1  | TAPPING SCREW 4X35            | 1   |     |         |           |        |
| 077   |     | 319605-8  | BLADE CASE COVER              | 1   |     |         | C1804     |        |
| 077-1 |     | 319702-0  | BLADE CASE COVER              | 1   | S   | C1804   |           |        |
| 078   |     | 266034-5  | TAPPING SCREW CT 4X16         | 5   |     |         |           |        |
| 079   |     | 458092-7  | SLIDE LEVER                   | 1   |     |         |           |        |
| 080   |     | 253932-2  | WAVE WASHER 10                | 1   |     |         |           |        |
| 081   |     | 345977-5  | PLATE                         | 1   |     |         |           |        |
| 082   |     | 265775-0  | THUMB SCREW M4X3              | 1   |     |         |           |        |
| 083   |     | 265775-0  | THUMB SCREW M4X3              | 1   |     |         |           |        |
| 084   |     | 419627-9  | HOLDER                        | 1   |     |         |           |        |
| 085   |     | 419627-9  | HOLDER                        | 1   |     |         |           |        |
| 086   |     | 265701-9  | THUMB SCREW M6X14             | 1   |     |         |           |        |
| 087   |     | 231316-4  | COMPRESSION SPRING 7          | 1   |     |         |           |        |
| 088   |     | 265776-8  | THUMB SCREW M6X26             | 1   |     |         |           |        |
| 089   |     | 253111-2  | FLAT WASHER 6                 | 1   |     |         |           |        |
| 090   |     | 419596-4  | REAR ANGULAR GUIDE            | 1   |     |         |           |        |
| 091   |     | 319604-0  | BASE                          | 1   |     |         | DA522     |        |
| 091-1 |     | 312B95-6  | BASE                          | 1   | S   | DA522   |           |        |
| 092   |     | 265995-6  | TAPPING SCREW 4X18            | 2   |     |         |           |        |
| 093   |     | 266225-8  | H.S.SET SCREW(FLAT POINT)M6X8 | 1   |     |         |           |        |
| 094   |     | 265701-9  | THUMB SCREW M6X14             | 1   |     |         |           |        |
| 095   |     | 231316-4  | COMPRESSION SPRING 7          | 1   |     |         |           |        |
| 096   |     | 345748-0  | LOCK WASHER                   | 1   |     |         |           |        |
| 097   |     | 266225-8  | H.S.SET SCREW(FLAT POINT)M6X8 | 1   |     |         |           |        |
| 098   |     | 324731-0  | STOPPER PIN                   | 1   |     |         |           |        |
| 099   |     | 265995-6  | TAPPING SCREW 4X18            | 2   |     |         |           |        |
| 100   |     | 912112-6  | COUNTERSUNK HEAD SCREW M4X10  | 1   |     |         |           |        |
| 101   |     | 419595-6  | FRONT ANGULAR GUIDE           | 1   |     |         | DA522     |        |
| 101-1 |     | 413A11-6  | FRONT ANGULAR GUIDE           | 1   | S   | DA522   |           |        |
| 102   |     | 252157-5  | SQUARE NUT M6                 | 1   |     |         |           |        |
| 103   |     | 266225-8  | H.S.SET SCREW(FLAT POINT)M6X8 | 1   |     |         |           |        |
| 104   |     | 457963-5  | DIAL 22                       | 1   |     |         |           |        |
| 105   |     | 961017-7  | STOP RING E-3                 | 1   |     |         |           |        |
| 106   |     | 253111-2  | FLAT WASHER 6                 | 1   |     |         |           |        |

Interchange  
O : Yes  
X : No  
< : the new part can be substituted for the current.  
> : the current part can be substituted for the new.  
S : Interchangeable as a set.

