



| | |
|----|---------|
| VN | VIETNAM |
|----|---------|

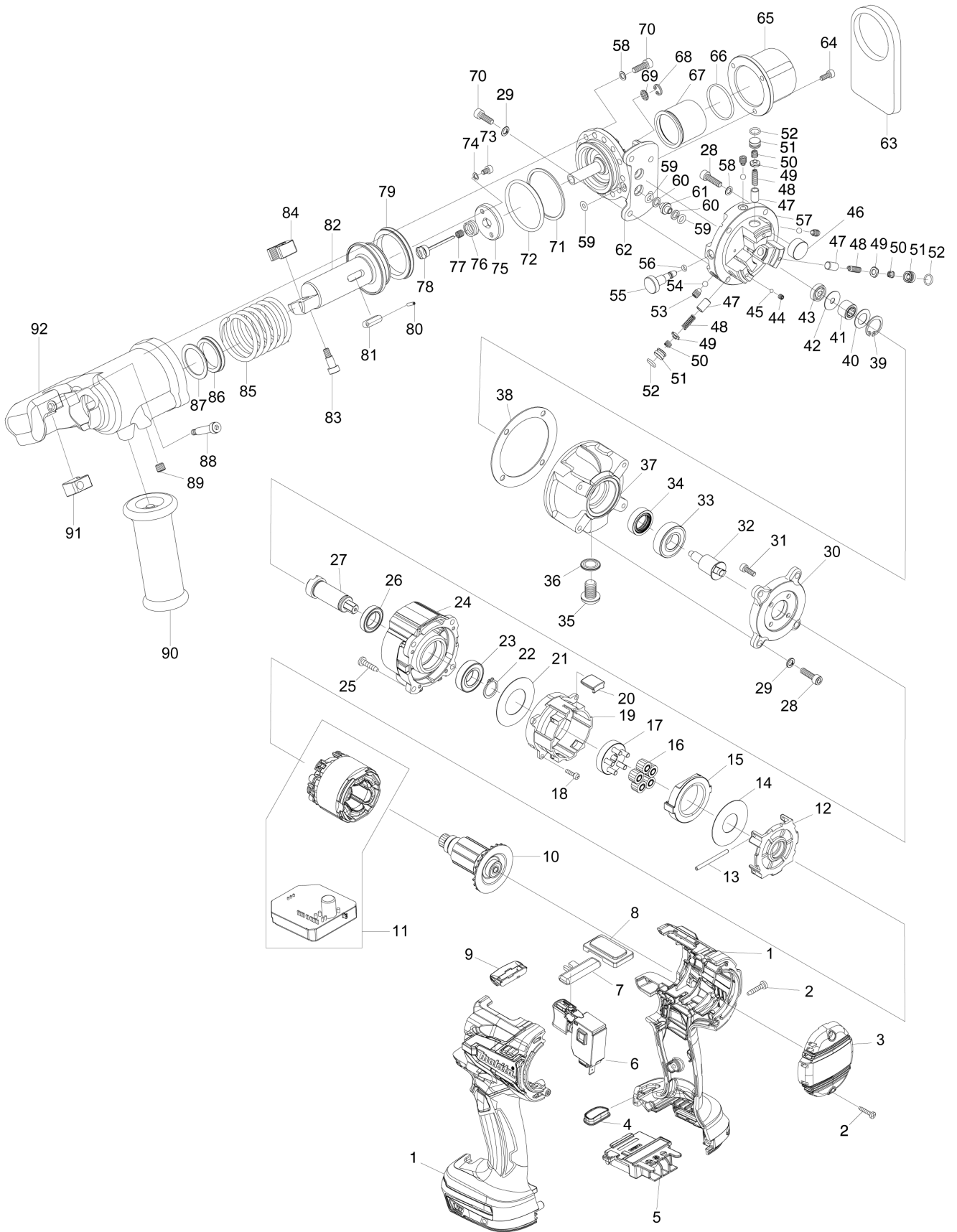
Diagram / Parts List

DSC121

CORDLESS THREADED ROD CUTTER



(VN) DSC121 / CORDLESS THREADED ROD CUTTER



| | |
|-----------|----------------|
| VN | VIETNAM |
|-----------|----------------|

DSC121 / CORDLESS THREADED ROD CUTTER

| Item | Sub | Parts No. | Parts Description | Qty | I/C | E/C No. | Close No. | Remark |
|------|-----|------------|--------------------------------|-----|-----|---------|-----------|--------|
| 001 | | 183C36-3 | HOUSING SET | 1 | | | | |
| | C10 | 263005-3 | RUBBER PIN 6 | 2 | | | | |
| 002 | | 266130-9 | TAPPING SCREW BIND PT 3X16 | 9 | | | | |
| 003 | | 455011-4 | REAR COVER | 1 | | | | |
| 004 | | 142263-3 | INDICATOR PANEL COMPLETE | 1 | | | | |
| 005 | | 643874-2 | TERMINAL | 1 | | | | |
| 006 | | 650710-5 | SWITCH C3JW-4B | 1 | | | | |
| 007 | | 451162-1 | LOCK LEVER | 1 | | | | |
| 008 | | 457799-2 | COVER | 1 | | | | |
| 009 | | 620283-2 | LED CIRCUIT | 1 | | | | |
| 010 | | 619336-2 | ROTOR | 1 | | | | |
| 011 | | 629116-8 | STATOR COMPLETE | 1 | | | | |
| 012 | | 455005-9 | MOTOR BRACKET | 1 | | | | |
| 013 | | 256375-7 | ROD 3 | 2 | | | | |
| 014 | | 253401-3 | FLAT WASHER 18 | 1 | | | | |
| 015 | | 221558-8 | INTERNAL SPUR GEAR 41 | 1 | | | | |
| 016 | | 226193-7 | SPUR GEAR 13 | 5 | | | | |
| 017 | | 144591-2 | CARRIER COMPLETE | 1 | | | | |
| 018 | | 911017-7 | PAN HEAD SCREW M3X12 | 4 | | | | |
| 019 | | 455006-7 | GEAR CASE | 1 | | | | |
| 020 | | 422168-6 | RUBBER SEAL | 1 | | | | |
| 021 | | 253888-9 | FLAT WASHER 25 | 1 | | | | |
| 022 | | 961055-9 | RETAINING RING S-15 | 1 | | | | |
| 023 | | 211234-2 | BALL BEARING 6902LLB | 1 | | | | |
| 024 | | 319616-3 | GEAR HOUSING | 1 | | | | |
| 025 | | 266326-2 | TAPPING SCREW 4X18 | 4 | | | | |
| 026 | | 211233-4 | BALL BEARING 6802LLB | 1 | | | | |
| 027 | | 326996-0 | SPINDLE | 1 | | | | |
| 028 | | SC07512050 | BOLT HB5X18 | 8 | | | | |
| 029 | | SC07610030 | WASHER SW5 | 8 | | | | |
| 030 | | SC03220120 | MOTOR FLANGE | 1 | | | | |
| 031 | | SC07511080 | BOLT HB4X12 | 4 | | | | |
| 032 | | SC00000486 | ECCENTRIC SHAFT T45417 | 1 | | | | |
| 033 | | SC00000050 | BALL BEARING 6002RU | 1 | | | | |
| 034 | | SC06504050 | OIL SEAL UE15257 | 1 | | | | |
| 035 | | SC07550100 | HEX. SOCKET BUTTON BOLT HBB10X | 1 | | | | |
| 036 | | SC00000489 | SEAL WASHER WF10171.6 | 1 | | | | |
| 037 | | SC03210040 | PIMP CASE | 1 | | | | |
| 038 | | SC04601550 | LINER B | 1 | | | | |
| 039 | | SC00000487 | STOP RING H19 | 1 | | | | |
| 040 | | SC00000465 | NEEDLE BEARING HOLDER A T45421 | 1 | | | | |
| 041 | | SC00000466 | NEEDLE BEARING #RNAF81510 | 1 | | | | |
| 042 | | SC00000467 | NEEDLE BEARING HOLDER B T45422 | 1 | | | | |
| 043 | | SC07100030 | BALL BEARING 625 | 1 | | | | |
| 044 | | SC07521010 | BOLT HS4X4 | 3 | | | | |
| 045 | | SC07900000 | STEEL BALL 3 | 3 | | | | |
| 046 | | SC00000020 | MAGNET | 1 | | | | |
| 047 | | SC03500380 | PISTON | 3 | | | | |
| 048 | | SC00000022 | PISTON RETURN SPRING | 3 | | | | |
| 049 | | SC00000464 | CHECK VALVE #T43445N1 | 3 | | | | |
| 050 | | SC00000468 | SPRING #43449N2 | 3 | | | | |
| 051 | | SC03500540 | METAL PACKING | 3 | | | | |
| 052 | | SC06505590 | O RING S-8 | 3 | | | | |
| 053 | | SC07523020 | BOLT HS6X8 | 3 | | | | |
| 054 | | SC07900070 | STEEL BALL D3/16 | 3 | | | | |
| 055 | | SC03503900 | RETURN VALVE | 1 | | | | |
| 056 | | SC06505300 | O RING S4 | 1 | | | | |
| 057 | | SC03207610 | MAIN PUMP | 1 | | | | |
| 058 | | SC00000067 | WASHER 5 | 17 | | | | |
| 059 | | SC06505010 | O RING P6 | 5 | | | | |
| 060 | | SC06503580 | BACKUP RING P6 | 4 | | | | |
| 061 | | SC03500750 | O-RING GUIDE | 2 | | | | |
| 062 | | SC03515230 | FLANGE FOR CUTTER HEAD | 1 | | | | |
| 063 | | SC04500710 | BALANCE STAND | 1 | | | | |
| 064 | | SC07511010 | HEX. SOCKET HEAD BOLT 4X8 | 3 | | | | |

Interchange
O : Yes
X : No
< : the new part can be substituted for the current.
> : the current part can be substituted for the new.
S : Interchangeable as a set.

