



Cordless Planer
DKP181 82mm (3-1/4")



High Power as AC Tool



Cutting work amount

Work volume on a single full battery charge

Planed 67mm wide and 1000mm long



with BL1850B

Cutting depth

0.5mm

76 m

2.0mm

46 m

Planing width

82 mm

Shiplapping cuts

25 up to mm

Max Planing depth

3 up to mm



High Power by Brushless Motor



Left and right chip ejection

The direction can be changed to either side for operator's comfort and convenience.



Connectable to Makita vacuum cleaners and Dust bag assembly



ADT

Automatic torque Drive Technology

automatically changes the cutting speed according to load conditions for an optimum operation

Rigid aluminum die-cast bracket

for enhanced durability of drum-shaft holding portion

Ergonomically designed and rubberized handle

provides more comfort, control and while minimizing hand fatigue, and pain.



Foot on base plate

protects workpiece and blade from scratches and damages even if the machine is put on workpiece before drum comes to a complete halt.

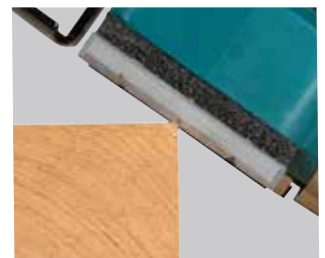
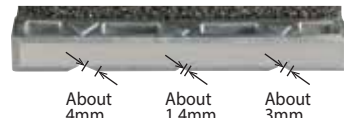


Knob with click stops

:: provides precise planing depth setting by rubberized adjustment knob with click stops and easy-to-read scale.

Front base with 3 chamfering grooves

:: Easy chamfering by aligning the groove with the edge of workpiece.
:: 3 different grooves are provided.



Auto-start Wireless System

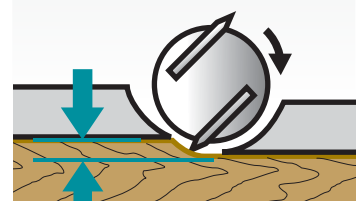
The wireless activation function enables clean and comfortable operation. By connecting a supported tool to the cleaner, you can run the cleaner automatically along with the switch operation of the tool.



Shiplapping cuts: Up to 25mm (1")



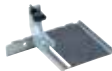
Max. Planing Depth: Up to 3mm (1/8")



Accessories

Guide Rule

Part No. 191C23-8



Chamfering Rule Assembly Set

Part No. 191C22-0



Depth guide

Part No. 342390-8



Blade gauge assembly

Part No. 191C19-9



Planer blade (2 per pkg.)

Part No. 793007-0



Elbow

Part No. 191C20-4



Set plate (2 per pkg.)

Part No. 193540-6



Dust bag assembly

Part No. 191C21-2



Sharpening holder assembly

Part No. 191C17-3



Dressing stone

Part No. 794061-7



Cordless Planer

DKP181 82 mm (3-1/4")

- Brake
- Soft Start
- Dust Collection
- Carrying Case

Planing Width	82 mm (3-1/4")
Planing Depth	3 mm (1/8")
Max Shiplapping	25mm (1")
No Load Speed (RPM)	12,000
Dimensions (L x W x H)	366x156x166 mm
Net weight	3.3 - 3.6 kg

DKP181ZU: No battery, charger
DKP181Z: No battery, charger

Standard Equipment: 82mm hss planer blade (D-16346), guide rule ass'y (122785-9), blade gauge ass'y (123062-2), socket wrench 9 (782209-3), depth guide (342390-8), sharpening holder ass'y (123004-6).

DKP181ZU: wireless unit set.

The weight may differ depending on the attachment(s), including the battery cartridge. The lightest and heaviest combination, according to EPTA-Procedure 01/2014, are shown in the table.

Items of standard equipment and specifications may vary by country or area.

CÔNG TY TNHH MAKITA VIỆT NAM

Kho 4-5-6, Block 16, 18L1-2 Đường số 3, KCN VSIP II, P. Hòa Phú, TP. Thủ Đức, Bình Dương
ĐT: 0274 362 8338 - Fax: 0274 362 8339 - Website: www.makita.com.vn

CHI NHÁNH CTY TNHH MAKITA VN TẠI MIỀN BẮC

Kho 5, số 1, đường số 6, KCN -ĐT - DV VSIP Bắc Ninh, X. Phú Chấn, T.X. Từ Sơn, T. Bắc Ninh
ĐT: 0222 376 5942 Fax: 0222 376 5941

TRUNG TÂM DỊCH VỤ KHÁCH HÀNG CHI NHÁNH ĐÀ NẴNG

102 Triệu Nữ Vương, P. Hải Châu 2, Q. Hải Châu, TP. Đà Nẵng
ĐT: 0236 352 5079/ 0236 352 5179 Fax: 0236 352 5479

TRUNG TÂM DỊCH VỤ KHÁCH HÀNG CHI NHÁNH CẦN THƠ

366 Võ Văn Kiệt, Khu Vực 5, Phường An Thới, Quận Bình Thủy, Thành Phố Cần Thơ
ĐT: 0292 3894 358 Fax: 0292 3894 359

TRUNG TÂM DỊCH VỤ KHÁCH HÀNG CHI NHÁNH BÙN MA THUỘT

60 Y Jút, P. Thống Nhất, TP. Buon Ma Thuột, T. Đắk Lắk
ĐT: 0262 355 4556 Fax: 0262 355 4557

TRUNG TÂM DỊCH VỤ KHÁCH HÀNG CHI NHÁNH HẢI PHÒNG

Số 15, Phố Phạm Hồng Thái, Q. Hồng Bàng, TP. Hải Phòng
Điện thoại: 0225 8831 529

TRUNG TÂM DỊCH VỤ KHÁCH HÀNG CHI NHÁNH NHA TRANG

1053 Đường 2 tháng 4, P. Vạn Thạnh, TP. Nha Trang, T. Khánh Hòa
ĐT: 0258 3823 338

TRUNG TÂM DỊCH VỤ KHÁCH HÀNG CHI NHÁNH HỒ CHÍ MINH

Số 12 Trịnh Văn Cấn, P. Cầu Ông Lãnh, Q. 1, TP. Hồ Chí Minh
Điện thoại: 028 3821 5191