

Variable speed control dial



allows operator to adjust cutting speed depending on material or application.

Dual LED job lights



XPT
EXTREME PROTECTION TECHNOLOGY

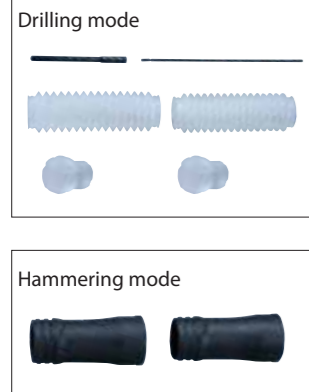
Dust and drip-proof performance is enhanced for use in outdoor applications or harsh environments.

Makita Cordless Rotary Hammer **DHR400** 40 mm (1-9/16")



Accessories

Dust Extractor Attachment Set



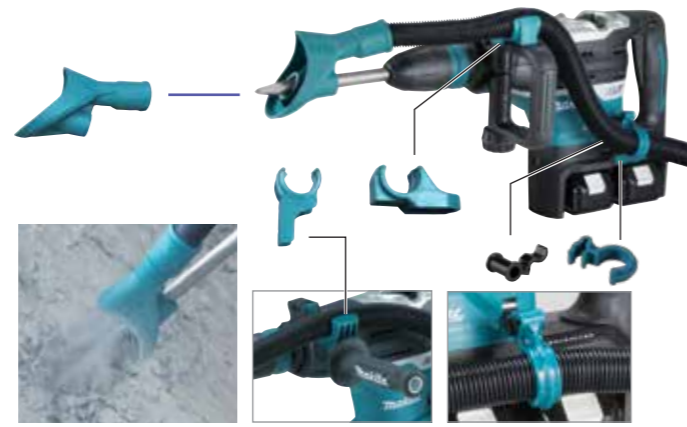
Part No. 199142-6



Dust Extractor Attachment Set
Hammering only

without Vacuum hose set
Part No. 199143-4

with Vacuum hose set
Part No. 199144-2



Li-ion Battery & Charging Time Reference, Compatibility Chart

	BL1815N 18V 1.5Ah	BL1820B 18V 2.0Ah with Battery fuel gauge	BL1830B 18V 3.0Ah with Battery fuel gauge	BL1840B 18V 4.0Ah with Battery fuel gauge	BL1850B 18V 5.0Ah with Battery fuel gauge	BL1860B 18V 6.0Ah with Battery fuel gauge
Two Port Multi Fast Charger 	15 min	24 min	22 min	36 min	45 min	55 min



Cordless Rotary Hammer DHR400 40 mm (1-9/16")

- Variable Speed
- Brake
- Reversing
- SDS-MAX Shank
- Torque Limiter
- Constant Speed
- Soft Start
- Dust Collection
- Built-in Job Light
- Carrying Case

Impact Energy EPTA-Procedure 05/2009: 8.0 J
Our experimental conditions: 11.4 J

Capacity Concrete (w/ T.C.T. bit) : 40 mm (1-9/16")
Concrete (w/ Core bit) : 105 mm (4-1/8")

Blows Per Minute (BPM) 1,450 - 2,900

No Load Speed (RPM) 250 - 500

Sound Pressure Level 91 dB(A)

Sound Power Level 102 dB(A)

Vibration Level Hammer Drilling Into Concrete: 5.0 m/s²

Dimensions (L x W x H) 473x120x285 mm
(18-5/8"x4-3/4"x11-1/4")

Net weight 7.3 - 8.1 kg (16.1 - 17.9 lbs)

Standard Equipment:
Side Handle, Side Grip, Depth Gauge, Bit Grease, Cloth, Wireless Unit (country-specific), Battery, Charger

The weight may differ depending on the attachment(s), including the battery cartridge. The lightest and heaviest combination, according to EPTA-Procedure 01/2014, are shown in the table. Items of standard equipment and specifications may vary by country or area.

Makita Corporation

3-11-8 Sumiyoshi-cho, Anjo, Aichi, 446-8502 Japan

PRINTED IN JAPAN 201801

High Power similar to AC Tool



Extra Comfort with unrivaled low level of vibration

AVT & SOFT NO LOAD
ANTI VIBRATION TECHNOLOGY

AWS
BL MOTOR
XPT
EXTREME PROTECTION TECHNOLOGY





Adapted for SDS-MAX bits

Excellent performance equivalent to AC Model



Newly developed BL motor delivers high power



Drilling work amount

Work volume on a single full battery charge

About **25** holes

- ◆ w/ T.C.T. bit Ø18mm
- ◆ Depth : 140mm
- ◆ Concrete : 40 N / mm²
- ◆ Battery : BL1850B x2

Demolition work

with bull point

Impact Energy

[EPTA-Procedure 05/2009]

8.0 J

Makita HR4013C 8.0J

AVT & SOFT NO LOAD

ANTI VIBRATION TECHNOLOGY

Vibration absorbing housing isolates handle and motor.

Active dynamic vibration absorber moves in the opposite direction to the drive piston to reduce vibration.

Damper spring absorbs impact vibrations from the drill bit.



AWS
Auto-start Wireless System



Wireless unit
Part No.
198901-5,
198900-7(EU)

Bluetooth



DVC864

Switch on the tool
Vacuum cleaner is activated

■ Comparison of Vibration level* and Time to reach ELV (Exposure Limit of Vibration)**

* It is known as the tri-axial value and value at Directive of A(8).

**It means the maximum amount of vibration that an operator may be exposed to on any single day.

Time to reach ELV (min)	100	200	550
Makita DHR400	5.0m/s ²		540min
Makita HR4013C	5.0m/s ²		540min
Vibration level (m/s ²)	0	5	10 15

AWS connects to power tool via Bluetooth.

Wireless unit



Bluetooth

The Bluetooth® word mark and logos are registered trademarks owned by the Bluetooth SIG, Inc. and any use of such marks by Makita is under license. Other trademarks and trade names are those of their respective owners.

Expand AWS Line-up

