



| | |
|----|---------|
| VN | VIETNAM |
|----|---------|

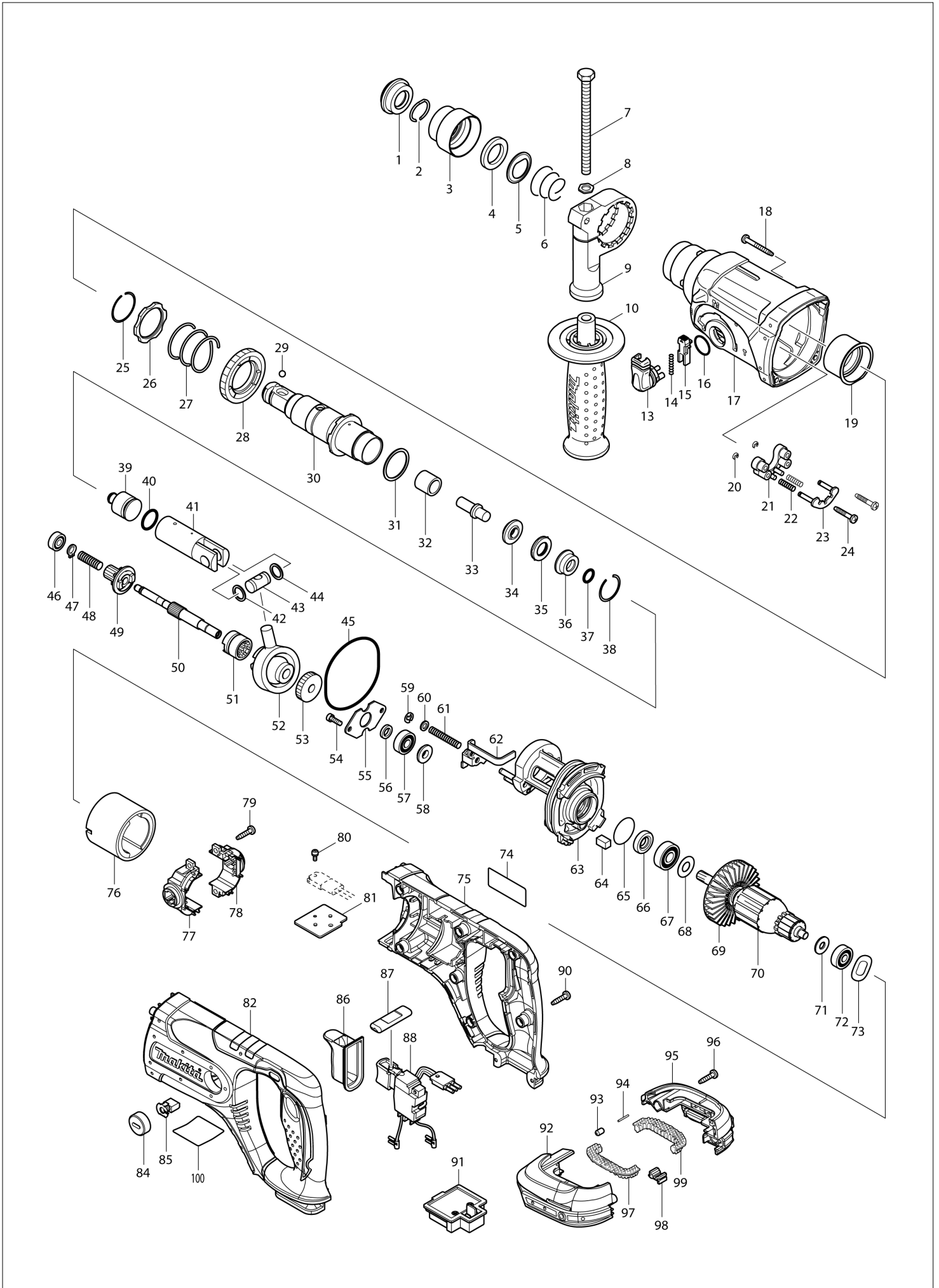
Diagram / Parts List

DHR241

CORDLESS COMBINATION HAMMER



(VN) DHR241 / CORDLESS COMBINATION HAMMER



| | |
|-----------|----------------|
| VN | VIETNAM |
|-----------|----------------|

DHR241 / CORDLESS COMBINATION HAMMER

| Item | Sub | Parts No. | Parts Description | Qty | I/C | E/C No. | Close No. | Remark |
|--------|-----|-----------|-----------------------------|-----|-----|---------|-----------|--------|
| 001 | | 286263-4 | CAP 35 | 1 | | | | |
| 002 | | 233940-9 | RING SPRING 19 | 1 | | | | |
| 003 | | 417629-9 | CHUCK COVER | 1 | | | | |
| 004 | | 257241-1 | RING 21 | 1 | | | | |
| 005 | | 345187-4 | GUIDE WASHER | 1 | | | | |
| 006 | | 233916-6 | CONICAL COMP. SPRING 21-29 | 1 | | | | |
| 007 | | 921923-8 | HEX. BOLT M8X120 | 1 | | | | |
| 008 | | 345280-4 | HEX. WASHER | 1 | | | | |
| 009 | | 417630-4 | GRIP BASE | 1 | | | | |
| 010 | | 158057-6 | GRIP 36 COMPLETE | 1 | | | | |
| | C10 | 931402-8 | HEX. NUT M8 | 1 | | | | |
| 013 | | 162245-9 | CHANGE LEVER | 1 | | | | |
| 014 | | 233459-8 | COMPRESSION SPRING 3 | 1 | | | | |
| 015 | | 419192-8 | LOCK BUTTON | 1 | | | | |
| 016 | | 213278-8 | O RING 17 | 1 | | | | |
| 017 | | 158216-2 | GEAR HOUSING COMPLETE | 1 | | | | |
| | C10 | 213345-9 | OIL SEAL 25 | 1 | | | | |
| 018 | | 266351-3 | TAPPING SCREW 4X35 | 4 | | | | |
| 019 | | 153290-5 | NEEDLE BEARING COMPLETE | 1 | | | | |
| 020 | | 961017-7 | STOP RING E-3 | 2 | | | | |
| 021 | | 417796-0 | GUIDE BASE | 1 | | | | |
| 022 | | 233344-5 | COMPRESSION SPRING 4 | 2 | | | | |
| 023 | | 163430-7 | LOCK PLATE COMPLETE | 1 | | | | |
| 024 | | 266374-1 | TAPPING SCREW 4X25 | 2 | | | | |
| 025 | | 233929-7 | RING SPRING 29 | 1 | | | | |
| 026 | | 267460-1 | WASHER 31 | 1 | | | | |
| 027 | | 233401-9 | COMPRESSION SPRING 32 | 1 | | | | |
| 028 | | 227109-5 | SPUR GEAR 51 | 1 | | | | |
| 029 | | 216022-2 | STEEL BALL 7.0 | 1 | | | | |
| 030 | | 158574-6 | TOOL HOLDER COMPLETE | 1 | | | | |
| 031 | | 267229-3 | FLAT WASHER 28 | 1 | | | | |
| 032 | | 331769-8 | SLEEVE 9 | 1 | | | | |
| 033 | | 324669-9 | IMPACT BOLT | 1 | | | | |
| 034 | | 324402-9 | RING 10 | 1 | | | | |
| 035 | | 421955-0 | CUSHION RING 13 | 1 | | | | |
| 036 | | 324216-6 | O RING CASE | 1 | | | | |
| 037 | | 213073-6 | O RING 9 | 1 | | | | |
| 038 | | 233917-4 | RING SPRING 28 | 1 | | | | |
| 039 | | 324214-0 | STRIKER | 1 | | | | |
| 040 | | 213227-5 | O RING 16 | 1 | | | | |
| 041 | | 318132-2 | PISTON CYLINDER | 1 | | | | |
| 042 | | 267104-3 | FLAT WASHER 12 | 1 | | | | |
| 043 | | 324215-8 | PISTON JOINT | 1 | | | | |
| 044 | | 267104-3 | FLAT WASHER 12 | 1 | | | | |
| 045 | | 213727-5 | O-RING 63 | 1 | | | | |
| 046B | | 211012-0 | BALL BEARING 606ZZ | 1 | | | A3132 | |
| 046-1B | | 210028-2 | BALL BEARING 606ZZ | 1 | O | A3132 | | |
| 046-1C | | 210028-2 | BALL BEARING 606ZZ | 1 | | | | |
| 047 | | 961003-8 | RETAINING RING S-7 | 1 | | | | |
| 048 | | 233343-7 | COMPRESSION SPRING 7 | 1 | | | | |
| 049 | | 227179-4 | SPUR GEAR 10 | 1 | | | | |
| 050 | | 324668-1 | CAM SHAFT | 1 | | | | |
| 051 | | 331992-5 | CLUTCH CAM | 1 | | | | |
| 052 | | 219014-0 | SWASH BEARING 10 | 1 | | | | |
| 053 | | 226632-7 | HELICAL GEAR 25 | 1 | | | D6068 | |
| 053-1 | | 226985-4 | HELICAL GEAR 25 | 1 | S | D6068 | | |
| 054 | | 266273-7 | HEX. SOCKET HEAD BOLT M4X12 | 2 | | | | |
| 055 | | 345179-3 | BEARING RETAINER | 1 | | | | |
| 056 | | 267234-0 | FLAT WASHER 8 | 1 | | | D6068 | |
| 057B | | 211032-4 | BALL BEARING 608ZZ | 1 | | | A3132 | |
| 057-1B | | 210029-0 | BALL BEARING 608ZZ | 1 | O | A3132 | | |
| 057-1C | | 210029-0 | BALL BEARING 608ZZ | 1 | | | | |
| 058 | | 324212-4 | RING 8 | 1 | | | | |
| 059 | | 961011-9 | STOP RING E-4 | 1 | | | | |
| 060 | | 941102-2 | FLAT WASHER 5 | 1 | | | | |

B:DHR241RFE(H)
C:DHR241Z(N)

Interchange
O : Yes
X : No
< : the new part can be substituted for the current.
> : the current part can be substituted for the new.
S : Interchangeable as a set.

