



Cordless Heated Jacket  
DCJ200 / CJ102D / CJ100D  
Cordless Heated Vest  
DCV200 / CV101D / CV100D

+10°C



HEATED JACKET



DCJ200



CJ102D



CJ100D



HEATED VEST



DCV200



CV101D



CV100D



# HEATED VEST

HEATED VEST

+10



### Tight-fitting but flexible

Thin design allows user to put on work clothes over the vest

Both sides are made of elastic polyester fabric to make the vest more tight-fitting but flexible to body, allowing user to feel warmer and to move actively.



### Belt clip

for holding the battery securely on waist belt (DCV200, CV101D)



### Battery pocket on lower left back inside

Capable of storing BL1013 with CV100D's battery holder installed



### Mobile phone pocket

enables a mobile device to be charged with a jacket on.

### 2 Heat zones



Touch controller for on/off switching by long press and 3 heat level settings with 3-stage red LED indicator



High	Medium	Low
8h	16h	28h

Continuous runtime on a single full battery charge with BL1850 (18V-5.0Ah Battery)

### Cordless Heated Vest

DCV200 18V/14.4V / CV101D 10.8V / CV100D 10.8V

# HEATED JACKET

VEST & JACKET

0°C



### Zip-off sleeves

Removable for converting jacket into vest

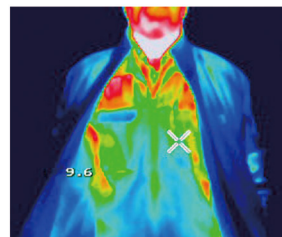
### Back pocket

on left side for storage of Li-ion battery with Battery holder

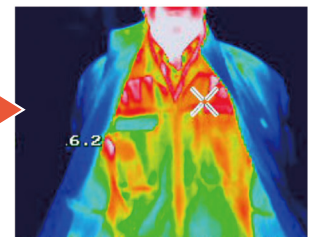


### Heating effects

When wearing in a minus 5 degree C environment (in High mode)



when switch is off

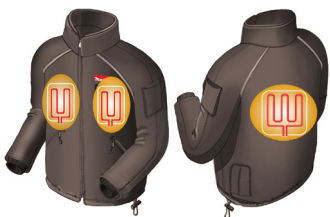


about 15 minutes after switch-on

### Mobile phone pocket

### 3 Heat zones

Heated elements are placed to effectively warm the core of your body.

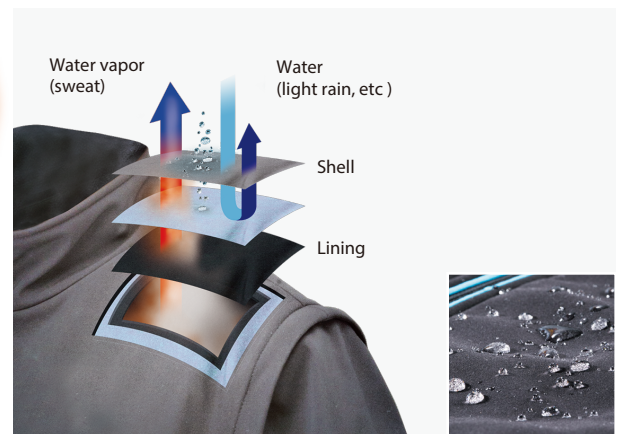


### Cordless Heated Jacket

DCJ200 18V/14.4V / CJ102D 10.8V / CJ100D 10.8V

### Made of a water-resistant fabric, which is also permeable to water vapor

prevents penetration of water such as light rain while efficiently letting out water vapor. (DCJ200, CJ102D, CJ100D)



## Size

### Cordless Heated Jacket (CJ100D / CJ102D / DCJ200)



No.	size (in cm)	S	M	L	XL	2XL	3XL
A	Chest width	108	118	128	138	146	156
B	Hem opening	102	112	122	132	140	150
C1	Shoulder length	50.5	52.5	54.5	55.5	56.5	57.5
C2	Sleeve length	63	64.5	66	67	68	69
D	Collar length outer edge	49	50.5	52	53.5	55	56.5
E	Front zip length	67.5	68	69.5	72.5	75.5	78.5

### Cordless Heated Vest (CV100D / CV101D / DCV200)



No.	Asian size (in cm) / US & EU size (in cm)	S	M	L	XL	2XL	3XL
A	Chest 1" below armhole	96 / 114	100 / 120	104 / 126	108 / 132	112 / 138	116 / 144
B	Hem width	98 / 116	102 / 122	106 / 128	110 / 134	114 / 140	118 / 146
C	Center back length	66 / 72	67 / 73	68 / 74	69 / 75	70 / 76	71 / 77
D	Collar depth	7 / 7	7 / 7	7 / 7	7 / 7	7 / 7	7 / 7
E	Shoulder width	42 / 47.5	43.2 / 49.5	44.4 / 51.5	45.6 / 53.5	46.8 / 55.5	48 / 57.5

### Continuous run time on a single full battery charge

	*DCJ200 / *DCV200  	*CJ102D / *CV101D  	CJ100D / CV100D 	
	 BL1850B	 BL1450	 BL1040B	
<b>High</b>	8h	5.5h	4h	1.5h
<b>Medium</b>	16h	10h	7.5h	2.5h
<b>Low</b>	28h	18h	14h	4.5h

#### \* with USB output port

- enables to charge mobile devices.
- Type A USB socket with rubber cap for DC5V/ 2.1A USB output



### Cordless Heated Jacket

#### DCJ200 18V/14.4V / CJ102D 10.8V / CJ100D 10.8V



<b>Heat Zones</b>	Total / Chest / Back: 3 / 2 / 1
<b>Heat Settings</b>	High / Medium / Low
<b>Size</b>	S / M / L / XL / 2XL / 3XL
<b>Pockets</b>	5
<b>Net weight</b>	DCJ200 BL1415N: 1.5 kg (3.3 lbs) BL1860B: 1.8 kg (4.0 lbs)
	CJ102D BL1015: 1.4 kg (3.1 lbs) BL1040B: 1.6 kg (3.4 lbs)
	CJ100D BL1013: 1.3 kg (2.9 lbs)

Battery & Charger Sold Separately.  
Net Weight: Jacket size L + Battery + Battery Holder

Standard Equipment : Battery Holder

### Cordless Heated Vest

#### DCV200 18V/14.4V / CV101D 10.8V / CV100D 10.8V



<b>Heat Zones</b>	Total / Shoulders / Back: 2 / 1 / 1
<b>Heat Settings</b>	High / Medium / Low
<b>Size</b>	S / M / L / XL / 2XL / 3XL
<b>Pockets</b>	4
<b>Net weight</b>	DCV200 BL1415N: 820 g (1.8 lbs) BL1860B: 1.1kg (2.5 lbs)
	CV101D BL1015: 700 g (1.5 lbs) BL1040B: 860g (1.9 lbs)
	CV100D BL1013: 640 g (1.4 lbs)

Battery & Charger Sold Separately.  
Net Weight: Vest size L + Battery + Battery Holder

Standard Equipment : Battery Holder

weight according to EPTA-Procedure 01/ver.2.1  
Items of standard equipment and specifications may vary by country or area.

# Makita Corporation

3-11-8 Sumiyoshi-cho, Anjo, Aichi, 446-8502 Japan

PRINTED IN JAPAN 201609